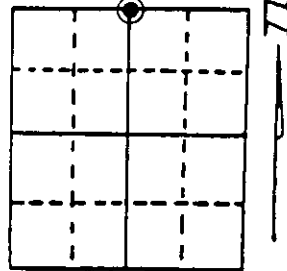


U.S. PUBLIC LAND SURVEY MONUMENT RECORD

Note: This form is intended and designed to fulfill all requirements of Wisconsin Administrative Code, Chapter A-E 7.08 U.S. Public Land Survey Monument Record (3) (a) (b) (c) (d) (e) (f) (g) (h) (i). An additional sheet may be added if necessary to conform with said requirements.

(a) Corner location: Township 39 North
 Range 5 East/West

Town/Village Minocqua
 County Oreida

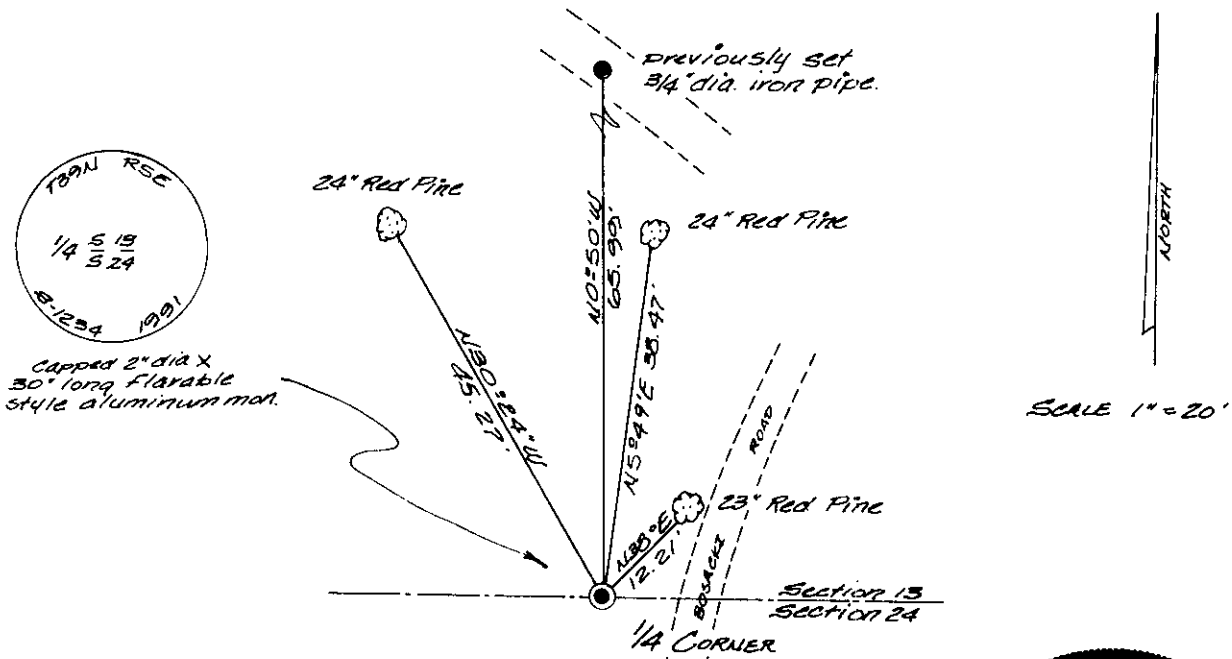


Section 24

(b) (f) (g) (h) Description of monument found at this corner and if it was accepted, state all evidence (material, testimonial, occupational, plats, records, other monuments) used as a basis for accepting. If not accepted or if nothing was found, state evidence used as basis for establishing location. If reestablished through lost corner proportionate methods, indicate all monuments, distances and directions used to establish. Indicate type of monument found or set and sign post.

Sept. 15th, 1863: Alexander Anderson, Deputy Surveyor, set post for Quarter Corner position. Made bearing trees: 5" Aspen, N15½°W, 15 links; 12" W. Pine, S88°W, 466 links.
 May 26th, 1926: D.S. Burnett, Surveyor, notes, in old field book #31, page 112, found stake from resurvey witnessed by a 16" Y. Pine, N32°30'W, 68½ links. Set new 4 x 4 pine stake and marked new bearing trees: 10" W. Pine stump, S66°30'E, 11.5 links; a 12" W. Pine, N35°E, 17 links; a 16" N. Pine, N3°30'E, 57½ links.
 Sept. 1st, 1943: E. F. Kowalke, Surveyor, recovered iron rod and Burnett's marked wood stake referenced by existing bearing trees: White Pine 12" N34½°E, 11.6 feet; Norway Pine 16" N3 3/4° E, 38.2 feet; Norway Pine 24" N32½W, 45.3 feet; Rotted Pine stump 10" S68°E, 7.3 feet.
 June 30th, 1991: James D. Rein, Registered Land Surveyor No. 1234, recovered a 1½" dia. axle shaft referenced by bearing trees identified in the plan view. Replaced the axle shaft with a capped 2" dia. x 30" long aluminum notch base monument (flared). Set plastic corner marker ½ foot South of corner. See plan view for corner reference ties.

(c) (d) (e) Plan view of corner with ties to at least 4 witness monuments. If in disagreement with previously established corner, show the distances between the two corners and also indicate the ties to the disputed corner.



(i) I, James D. Rein, Registered Land Surveyor No. 1234
 (type or print name) certify that the corner location on this record was determined by me or under my direction and control and that this U.S. Public Land Survey Monument Record is correct and complete to the best of my knowledge and belief.

James D. Rein Signature
 August 14th, 1991 Date



3905130020
 Stamp

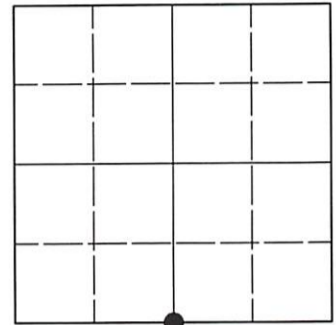
Index No N-23

U.S. PUBLIC LAND SURVEY MONUMENT RECORD

Note: This form is intended and designed to fulfill all requirements of Wisconsin Administrative Code, Chapter A-E 7.08 U.S. Public Land Survey Monument Record (3)(a-i).

(a) CORNER LOCATION
 1/4 Cor. of Secs. 13 & 24
 Township 39 North
 Range 5 East of the 4th P.M.
 Town of Minocqua
 County of Oneida

WISCRS - Oneida County
 N: 246,237.46 USft
 E: 163,183.01 USft
 Datum: NAD 83(2011) ep. 2010.00
 GNSS Method: RTN - Offset
 GNSS Control: WISCORS VRS



Sec. 13, T. 39 N., R. 5 E.

(b)(f)(g)(h) Description of monument found at this corner and if it was accepted, state all evidence (material, testimonial, occupational, plats, records, other monuments) used as a basis for accepting. If not accepted or if nothing was found, state evidence used as basis for establishing location. If re-established through lost corner proportionate methods, indicate all monuments, distances and directions used to establish. Indicate type of monument and sign post found or set.

This record is a perpetuation of the following land corner document(s):

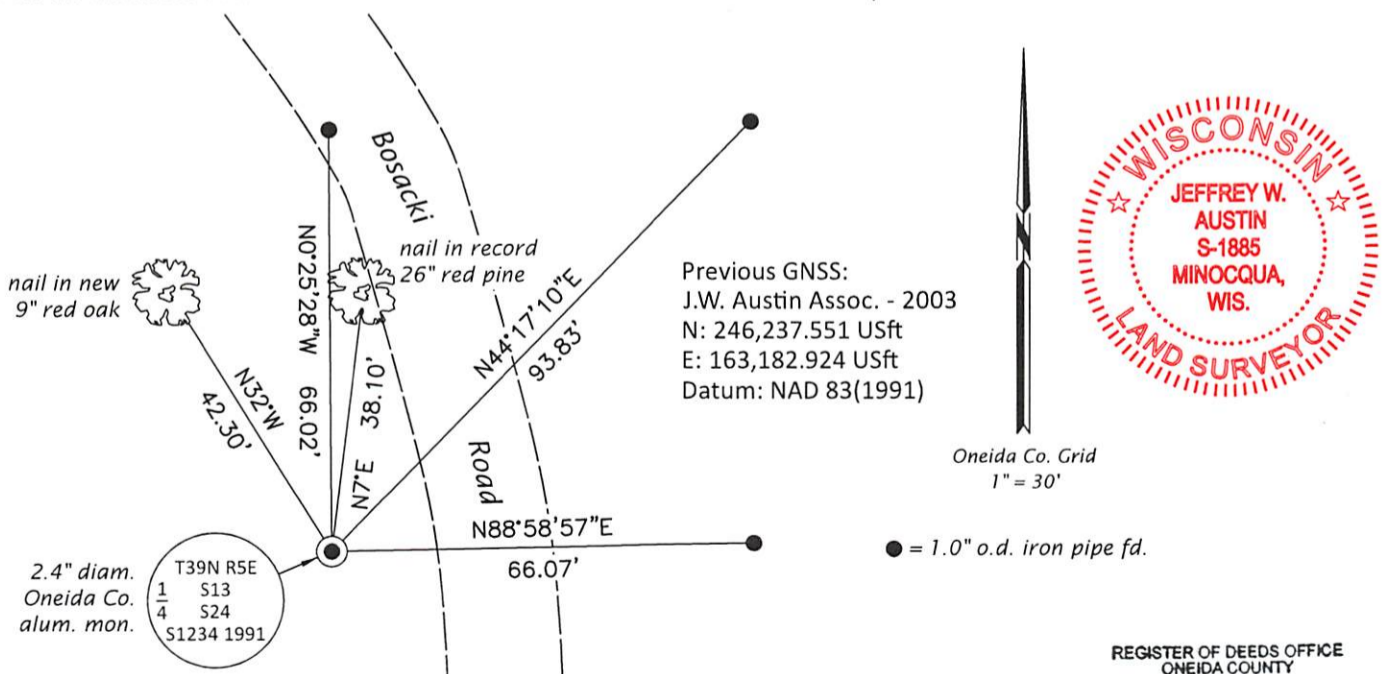
August 14, 1991: USPLS Monument Record by James D. Rein, filed in Oneida County

A complete history of the corner can be found on the previous land corner document(s). I accept the record activity as a true and faithful perpetuation or reestablishment of the original corner location and further perpetuate it as described below.


June 29, 2022: I found and accepted the record monument, a 2.4" diam. aluminum pipe, firmly set, with a 3.3" diam. Oneida Co. aluminum cap projecting 2" above the ground surface. The record bearing tree at N38°E is standing dead. The record bearing tree at N30°24'W is a cut stump. I found or established accessories as indicated below. I set a white vinyl sign post bearing Northeast, 0.7 ft.

The coordinate value shown has been determined by traversing from two or more GNSS offset points satisfying the accuracy requirements defined and qualified in the 2022 Oneida County Fee Schedule for USPLS Corners.

(c)(d)(e) Plan view of corner with ties to at least 4 witness monuments. If in disagreement with previously established corner, show the distances between the two corners and also indicate the ties to the disputed.



(i) I, Jeffrey W. Austin, Professional Land Surveyor No. S-1885, hereby certify that the corner location on this record was determined by me or under my direction and control and that this U.S. Public Land Survey Monument Record is correct and complete to the best of my knowledge and belief.


Date

REGISTER OF DEEDS OFFICE
 ONEIDA COUNTY
 FILED

AUG 02 2022

KYLE J. FRANSON
 REGISTER OF DEEDS