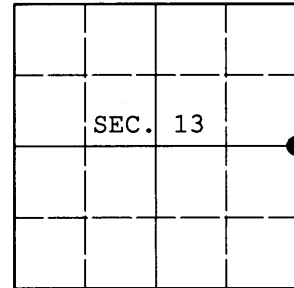


U.S. PUBLIC LAND SURVEY MONUMENT RECORD

Note: This form is intended and designed to fulfill all requirements of Wisconsin Administrative Code, Chapter A-E 7.08 U.S. Public Land Survey Monument Record (3) (a) (b) (c) (d) (e) (f) (g) (h) (i). An additional sheet may be added if necessary to conform with said requirements.

(a) CORNER LOCATION: Plane Coordinates
 1/4 Cor. of Secs. 13 & 18 N:
 Township 39 North E:
 Range 5 & 6 East of the 4th P.M. Datum:
 Town of Minocqua County of Oneida



(b) HISTORY OF ORIGINAL CORNER ESTABLISHMENT

Original Surveyor: Alfred Millard Original Accessories:
 Date of Survey: Commenced: Sept., 1860 aspen 12" N50°E, 94 lks.
 Completed: Sept., 1860 y. pine 14" N3°W, 61 lks.

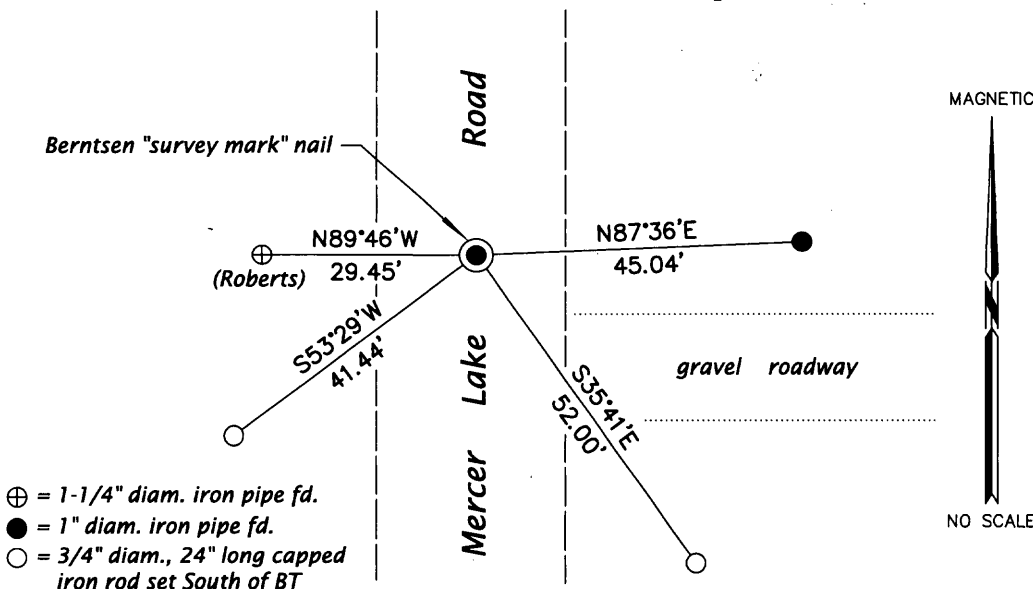
(b) (f) (g) (h) Description of monument found at this corner and if it was accepted, state all evidence (material, testimonial, occupational, plats, records, other monuments) used as a basis for accepting. If not accepted or if nothing was found, state evidence used as basis for establishing location. If re-established through lost corner proportionate methods, indicate all monuments, distances and directions used to establish. Indicate type of monument and sign post found or set.

NOTE: This is a perpetuation of a previous USPLS Monument Record by Dennis B. Roberts, RLS dated January 14, 1986 and filed in the office of the Oneida County Register of Deeds. A complete history of the corner can be found on the previous monument record. I accept the previous location as a true and faithful perpetuation or reestablishment of the original corner location and further perpetuate it as follows.

May 19, 2011: Prior to road construction, I found and accepted a Berntsen "survey mark" nail in the pavement of Mercer Lake Road. I found or established accessories as shown below and set a white plastic sign post adjacent to the northerly reference monuments.

August 14, 2011: I set a Berntsen "survey mark" nail in the new pavement at the corner point.

(c) (d) (e) Plan view of corner with ties to at least 4 witness monuments. If in disagreement with previously established corner, show the distances between the two corners and also indicate the ties to the disputed.



REGISTER OF DEEDS OFFICE
 ONEIDA COUNTY
FILED
 JAN 16 2012
 AT _____ O'CLOCK _____ M
THOMAS H. LEIGHTON
 REGISTER OF DEEDS



(i) I, Jeffrey W. Austin, Registered Land Surveyor No. S-1885, hereby certify that the corner location on this record was determined by me or under my direction and control and that this U.S. Public Land Survey Monument Record is correct and complete to the best of my knowledge and belief.

[Handwritten Signature]

 Signature

DEC. 31, 2011

 Date

3905132000 (INDEX NO. I-25)