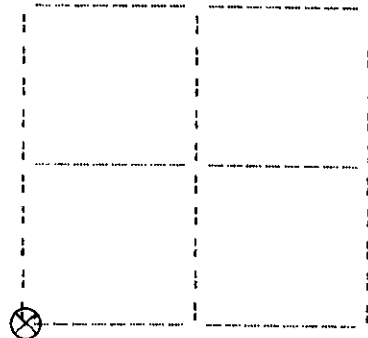


**U. S. PUBLIC LAND SURVEY MONUMENT RECORD**

Note: This form is intended and designed to fulfill all requirements of Wisconsin Administrative Code, Chapter A-E 7.08 U.S. Public Land Survey Monument Record(3)(a)(b)(c)(d)(e)(f)(g)(h)(i). An additional sheet may be added if necessary to conform with said requirements.

(a) Corner location: Township 39 North  
 Range 5 East  
 Town of Minocqua  
 Oneida County, Wisconsin



**Section 13**

(b)(f)(g)(h) Description of monument found at this corner and if it was accepted, state all evidence (material, testimonial, occupational, plats, records, other monuments) used as a basis for accepting. If not accepted or if nothing was found, state evidence used as basis for establishing location. If reestablished through lost corner proportionate methods, indicate all monuments, distances and directions used to establish. Indicate type of monument found or set and sign post.

September, 1863: Alexander Anderson notes the following: 80.00 set post cor. to secs. 13, 14, 23 & 24: y.pine 50° N12°E, 56 lks.; aspen 9° N34-1/2°W, 125 lks.

June 22, 1934 & 7-14-34: Hall page 329 & 330 notes the following: SW cor. 13 identified by 50" stp. of DBT no scribe marks but notch & facing visible. 2593.1 fell 23.7' W of orig. SW cor. 13, drove iron pipe for sec. cor. in E edge of travelled way (N & S road) and marked: b.oak 14" S25°E, 147.1'; b.oak 11" S8°W, 115'.

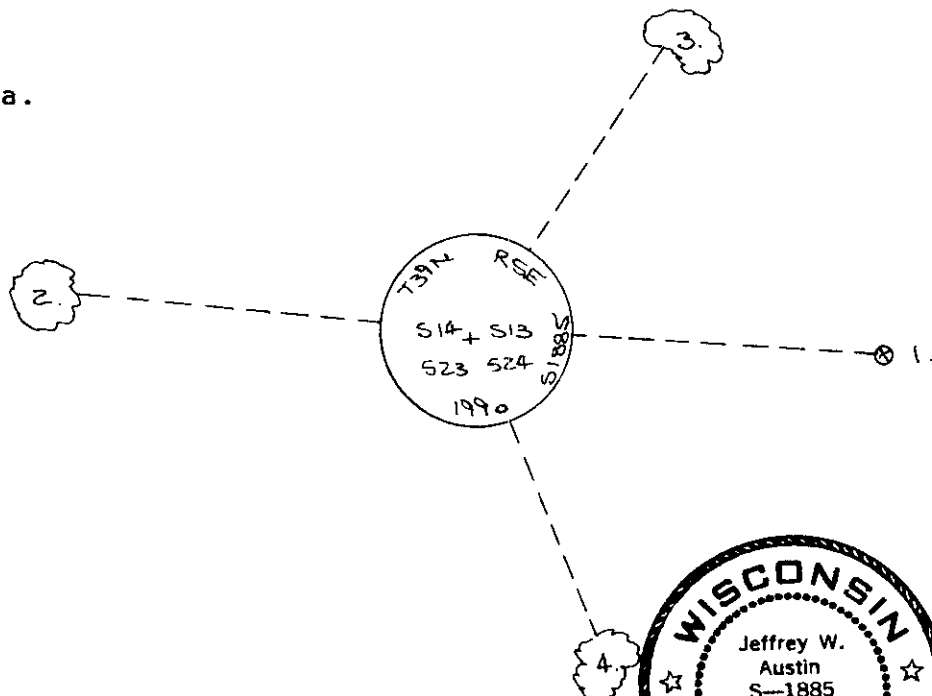
June 9, 1976: DCS map no. L-64 by Fisher, Inman, Foltz & Assoc.: corner shown as 1-1/4" dia. iron pipe found in place: 8" oak, N30°E, 59.4'; 14" oak, S60°E, 52.2'.

August 14, 1990: I found and accepted a 1-1/2" dia. 30" long iron pipe in the centerline of the town road. I replaced said pipe with a 3-1/4" dia. aluminum cap on a 24" long aluminum post stamped as shown below. I also set a deep 1 magnet below the monument. I found the following witnesses: iron pipe 1-1/4" S87°E, 32.85 feet; nail set in oak 13" N33°E, 59.70 feet; nail found in oak 24" S22°E, 146.75 feet. I established the following witnesses: nail set in aspen 10" N85°W, 50.28 feet; set PK nails north and west, 1.00 feet; set plastic sign post west, 25 feet. (monument is not plumb, but center point on cap is good)

(c)(d)(e) Plan view of corner with ties to at least four witness monuments. If in disagreement with previously established corner, show the distances between the two corners and also indicate the ties to the disputed corner.

1. iron pipe 1-1/4" dia.  
S87E, 32.85 feet.
2. nail in aspen 10"  
N85W, 50.28 feet.
3. nail in oak 13"  
N33E, 59.70 feet.
4. nail in oak 24"  
S22E, 146.75 feet.

(not to scale)



I, Jeffrey W. Austin, Registered Land Surveyor S-1885 certify that the corner location on this record was determined by me or under my direction and control and that this U.S. Public Land Survey Monument Record is correct and complete to the best of my knowledge and belief.



*Jeffrey W. Austin*  
 Signature

AUGUST 17, 1990  
 Date

Index no. N-21

3905140000

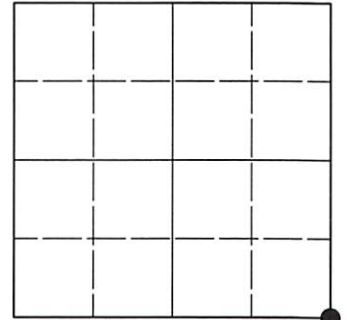
N 21

# U.S. PUBLIC LAND SURVEY MONUMENT RECORD

Note: This form is intended and designed to fulfill all requirements of Wisconsin Administrative Code, Chapter A-E 7.08 U.S. Public Land Survey Monument Record (3)(a-i).

(a) CORNER LOCATION  
 Cor. of Secs. 13, 14, 23 & 24  
 Township 39 North  
 Range 5 East of the 4th P.M.  
 Town of Minocqua  
 County of Oneida

WISCRS - Oneida County  
 N: 246,278.66 USft  
 E: 160,547.42 USft  
 Datum: NAD 83(2011) ep. 2010.00  
 GNSS Method: RTN - Direct  
 GNSS Control: WISCORS VRS



Sec. 14, T. 39 N., R. 5 E.

(b)(f)(g)(h) Description of monument found at this corner and if it was accepted, state all evidence (material, testimonial, occupational, plats, records, other monuments) used as a basis for accepting. If not accepted or if nothing was found, state evidence used as basis for establishing location. If re-established through lost corner proportionate methods, indicate all monuments, distances and directions used to establish. Indicate type of monument and sign post found or set.

*This record is a perpetuation of the following land corner document(s):*

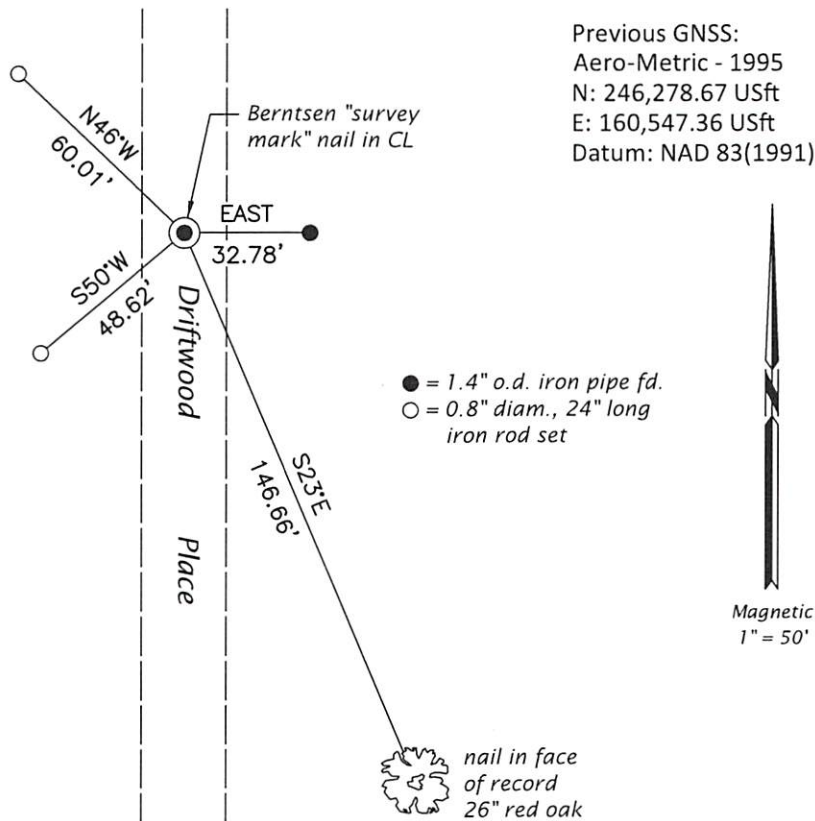
*August 17, 1990: USPLS Monument Record by Jeffrey W. Austin, filed in Oneida County*

*A complete history of the corner can be found on the previous land corner document(s). I accept the record activity as a true and faithful perpetuation or reestablishment of the original corner location and further perpetuate it as described below.*

*July 27, 2022: I found and accepted a perpetuation of the record monument, a Berntsen "survey mark" nail in the pavement centerline. Record bearing tree #2 is gone; record bearing tree #3 is down. I found or established accessories as indicated below. I found a white vinyl sign post bearing West, 24.5 ft.*

*The coordinate value shown is the weighted mean of two or more GNSS observations at markedly different times satisfying the accuracy requirements defined and qualified in the 2022 Oneida County Fee Schedule for USPLS Corners.*

(c)(d)(e) Plan view of corner with ties to at least 4 witness monuments. If in disagreement with previously established corner, show the distances between the two corners and also indicate the ties to the disputed.



REGISTER OF DEEDS OFFICE  
 ONEIDA COUNTY  
 FILED

AUG 31 2022

KYLE J. FRANSON  
 REGISTER OF DEEDS

(i) I, Jeffrey W. Austin, Professional Land Surveyor No. S-1885, hereby certify that the corner location on this record was determined by me or under my direction and control and that this U.S. Public Land Survey Monument Record is correct and complete to the best of my knowledge and belief.

*[Handwritten Signature]*  
 \_\_\_\_\_  
 Signature

AUG. 1, 2022  
 \_\_\_\_\_  
 Date