

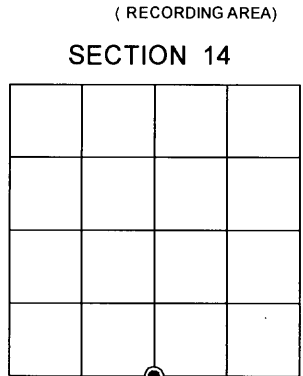
OCT 13 2014

AT _____ O'CLOCK _____ M
KYLE J. FRANSON
REGISTER OF DEEDS

U.S. PUBLIC LAND SURVEY MONUMENT RECORD

Note: This form is intended and designed to fulfill all requirements of the Wisconsin Administrative Code, Chapter A-E 7.08 U.S. Public Land Monument Record (3)(a)(b)(c)(d)(e)(f)(g)(h)(i). An additional sheet may be added if necessary to conform with said requirements.

(a) CORNER LOCATION:	COORDINATES
South Quarter Corner of Section 14	North: 246337.213
Township 39 North	East: 157964.824
Range 5 East	Control Station: WIS-COORS
Town Minocqua	Latitude: N/A
County of Oneida	Longitude: N/A
	Datum: NAD 83 (2011)
	Method: RTK Direct



(b) HISTORY OF ORIGINAL CORNER ESTABLISHMENT

Original Surveyor: Alex. Anderson
 Date of Survey: Commenced September 15th, 1863
 Completed September 20th, 1863
 Original B.T.'S: Tamarack 5", N88-1/2°E, 137 lks.
 Tamarack 5", S63°E, 87 lks.

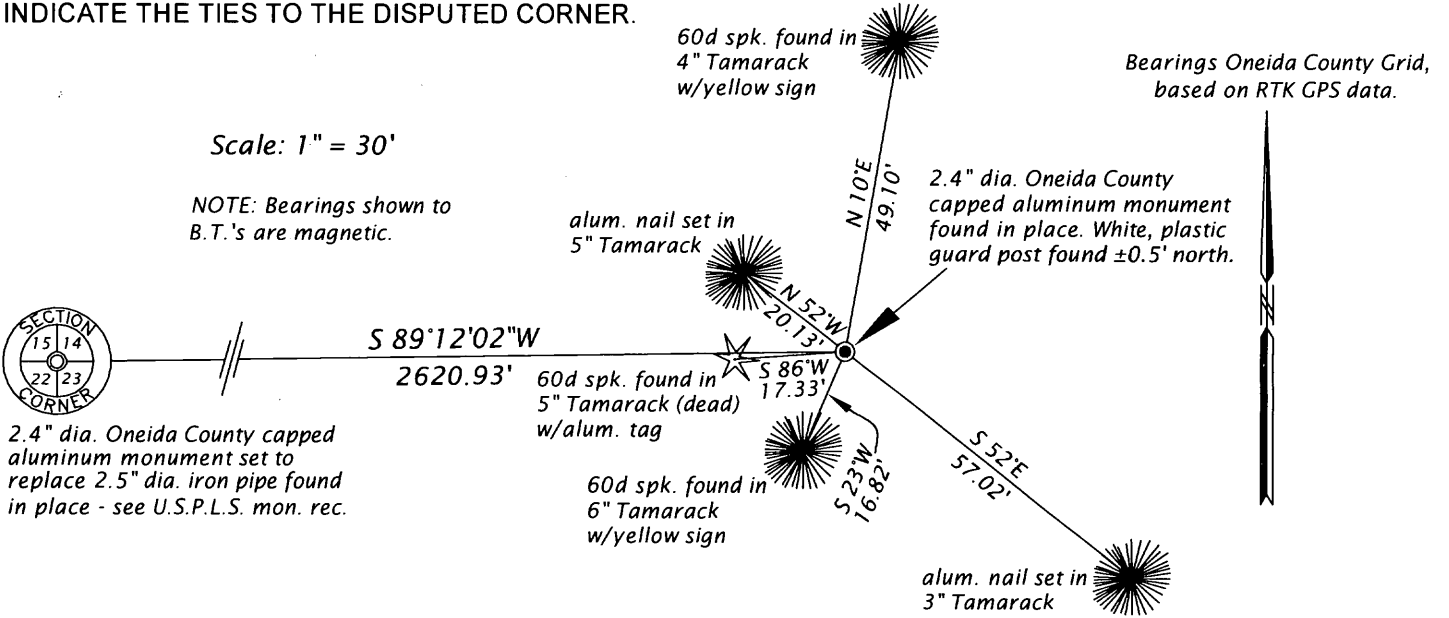
(f)(g)(h) DESCRIPTION OF MONUMENT FOUND AT THIS CORNER AND IF IT WAS ACCEPTED, STATE ALL EVIDENCE (MATERIAL, TESTIMONIAL, OCCUPATIONAL, PLATS, RECORDS, OTHER MONUMENTS) USED AS A BASIS FOR ESTABLISHING LOCATION. IF NOT ACCEPTED OR IF NOTHING WAS FOUND, STATE EVIDENCE USED AS BASIS FOR ESTABLISHING LOCATION. IF REESTABLISHED THROUGH LOST CORNER PROPORTIONATE METHODS, INDICATE ALL MONUMENTS, DISTANCES AND DIRECTIONS USED TO ESTABLISH. INDICATE TYPE OF MONUMENT AND SIGN POST FOUND OR SET.

April 1965 - Surveyor Wm. H. Stuth prepared a map of Sec. 14, dated 2/17/89. He shows an "Iron Pipe or Brass Cap" at the corner location.

October 25, 1983 - Surveyor Wm. H. Stuth prepared a sketch of Sec. 14, dated 3/11/87. He shows an "Iron Pipe or Brass Cap" at the corner location. His distance to the Southwest Section Corner is 2623.60'

March 31, 2014 - James D. Rein, Registered Land Surveyor No. S-1234, found a 2.4" dia. Oneida County capped aluminum monument stamped to identify corner. Cap is also stamped "RLS 1910" "2010". We accepted the monument as marking the original location for the corner. Our distance to Southwest Section Corner is 2620.93'.

(c)(d)(e) PLAN VIEW OF CORNER WITH TIES TO AT LEAST 4 WITNESS MONUMENTS. IF IN DISAGREEMENT WITH PREVIOUSLY ESTABLISHED CORNER, SHOW THE DISTANCE BETWEEN THE TWO CORNERS AND ALSO INDICATE THE TIES TO THE DISPUTED CORNER.

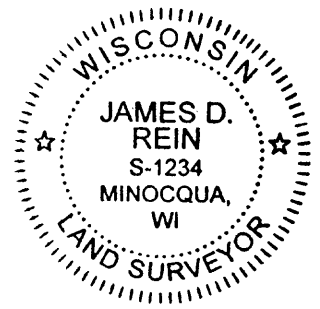


(i) I, JAMES D. REIN, PROFESSIONAL LAND SURVEYOR NO. S-1234 HEREBY CERTIFY THAT THE CORNER LOCATION ON THIS RECORD WAS DETERMINED BY ME OR UNDER MY DIRECTION AND CONTROL AND THAT THIS U.S. PUBLIC LAND SURVEY MONUMENT RECORD IS CORRECT AND COMPLETE TO THE BEST OF MY KNOWLEDGE AND BELIEF.

SIGNATURE

8-14-14

DATE



3905 14 0020

INDEX NO. 219