

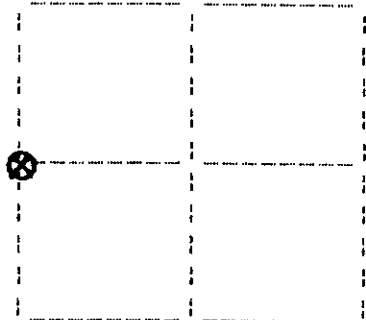
**U.S. PUBLIC LAND SURVEY MONUMENT RECORD**

Note: This form is intended and designed to fulfill all requirements of Wisconsin Administrative Code, Chapter A-E 7.08 U.S. Public Land Survey Monument Record (3)(a)(b)(c)(d)(e)(f)(g)(h)(i). An additional sheet may be added if necessary to conform with said requirements.

(a) Corner location: Township 39 North  
Range 5 East

Town of Minocqua

Oneida County, Wisconsin



**Section 13**

(b)(f)(g)(h) Description of monument found at this corner and if it was accepted, state all evidence (material, testimonial, occupational, plats, records, other monuments) used as a basis for accepting. If not accepted or if nothing was found, state evidence used as basis for establishing location. If reestablished through lost corner proportionate methods, indicate all monuments, distances and directions used to establish. Indicate type of monument found or set and sign post.

September, 1863: Alexander Anderson notes the following: 40.00 set 1/4 sec. post: w.pine 18° N41°W, 133 lks.; birch 5° N49-1/2°E, 15 lks.

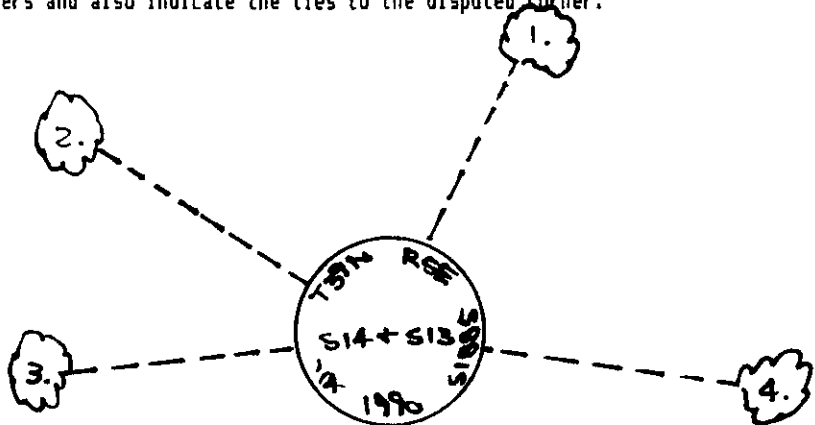
June 22, 1934: Hall page 329 notes the following: W1/4 (orig.) orig. BT plain y.pine 18° N41°W, 1.33 ch.; new (D.S. Burnett) w.pine 12° S86-1/4°E, .45.

November 1970: OCS map no. C-11 by Northwoods Surveyors: concrete monument found: w.pine 14° S83°E, 29.8'; spruce 10° N16°E, 13.1'.

August 14, 1990: I found and accepted a 4" sq., 36" long concrete monument. I replaced the monument with a 3-1/4" dia. aluminum cap on a 30" long aluminum post stamped as shown below. I also deposited a deep magnet below the new post. I found the following witnesses: pine stump N35°W, 90.5 feet; nail set in spruce 12° N26°E, 13.68 feet; set nail in w.pine 21° S82°E, 30.15 feet. I established the following witnesses: nail set in oak 15° N57°W, 12.85 feet; nail set in hemlock 12° S84°W, 42.50 feet; set plastic sign post north, 1 foot.

(c)(d)(e) Plan view of corner with ties to at least four witness monuments. If in disagreement with previously established corner, show the distances between the two corners and also indicate the ties to the disputed corner.

1. nail in spruce 12" N26E, 13.68 feet.
2. nail in oak 15" N57W, 12.85 feet.
3. nail in hemlock 12" S84W, 42.50 feet.
4. nail in w.pine 21" S82E, 30.15 feet.



(not to scale)

I, Jeffrey W. Austin, Registered Land Surveyor S-1885 certify that the corner location on this record was determined by me or under my direction and control and that this U.S. Public Land Survey Monument Record is correct and complete to the best of my knowledge and belief.



*Jeffrey W. Austin*  
Signature

August 17, 1990  
Date

Index no. L-21

3905142000

L-21

# U.S. PUBLIC LAND SURVEY MONUMENT RECORD

FEB 06 2020

Note: This form is intended and designed to fulfill all requirements of the Wisconsin Administrative Code, Chapter A-E 7.08 U.S. Public Land Monument Record (3)(a)(b)(c)(d)(e)(f)(g)(h)(i). An additional sheet may be added if necessary to conform with said requirements.

KYLE J. FRANSON  
REGISTER OF DEEDS

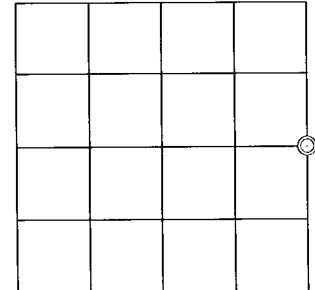
(a) CORNER LOCATION:

East Quarter Corner of Section 14  
Township 39 North  
Range 5 East  
Town of Minocqua  
County of Oneida

North:  
East:  
Datum:  
GNSS Method:  
GNSS Control:

(RECORDING AREA)

SECTION 14



SEE PREVIOUS U.S.P.L.S. MONUMENT  
RECORD DATED AUGUST 17, 1990.

(b) HISTORY OF ORIGINAL CORNER ESTABLISHMENT

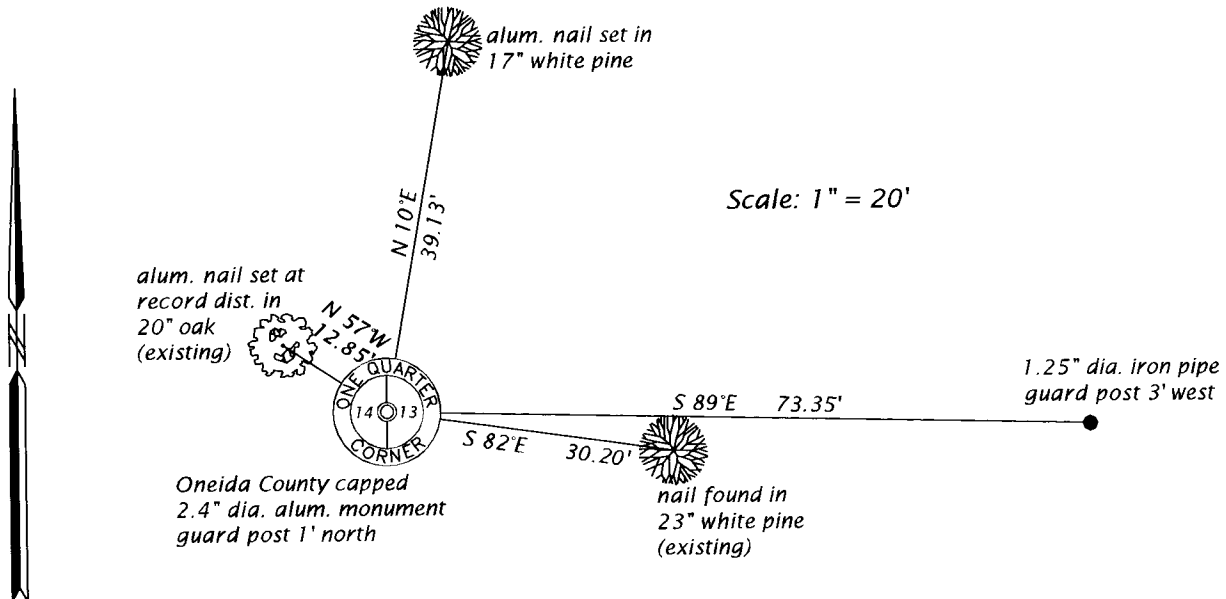
Original Surveyor:  
Date of Survey: Commenced  
Completed  
Original B.T.'S

(f)(g)(h) DESCRIPTION OF MONUMENT FOUND AT THIS CORNER AND IF IT WAS ACCEPTED, STATE ALL EVIDENCE (MATERIAL, TESTIMONIAL, OCCUPATIONAL, PLATS, RECORD, OTHER MONUMENTS) USED AS A BASIS FOR ESTABLISHING LOCATION. IF NOT ACCEPTED OR IF NOTHING WAS FOUND, STATE EVIDENCE USED AS BASIS FOR ESTABLISHING LOCATION. IF REESTABLISHED THROUGH LOST CORNER PROPORTIONATE METHODS, INDICATE ALL MONUMENTS, DISTANCES AND DIRECTIONS USED TO ESTABLISH. INDICATE TYPE OF MONUMENT AND SIGN POST FOUND OR SET.

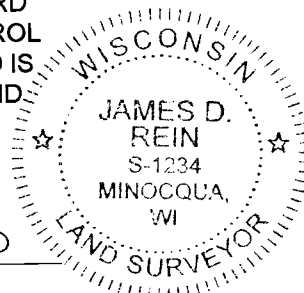
This is a perpetuation of a previous U.S.P.L.S. Monument Record by Jeffrey W. Austin, RLS, dated August 17, 1990, and filed in the office of the Oneida County Register of Deeds. A complete history of the corner can be found on the previous monument record. I accept the previous location as a true and faithful perpetuation or reestablishment of the original corner location and further perpetuate it as follows.

June 26, 2019, I, James D. Rein, P.L.S. No. S-1234, found Austin's aluminum monument damaged, in an improved yard. We set an Oneida County capped aluminum monument to replace the damaged monument. Austin's southwesterly hemlock and northeasterly spruce are now gone. See below for updated witnesses.

(c)(d)(e) PLAN VIEW OF CORNER WITH TIES TO AT LEAST 4 WITNESS MONUMENTS. IF IN DISAGREEMENT WITH PREVIOUSLY ESTABLISHED CORNER, SHOW THE DISTANCE BETWEEN THE TWO CORNERS AND ALSO INDICATE THE TIES TO THE DISPUTED CORNER.



(i) I, JAMES D. REIN, PROFESSIONAL LAND SURVEYOR NO. S-1234 HEREBY CERTIFY THAT THE CORNER LOCATION ON THIS RECORD WAS DETERMINED BY ME OR UNDER MY DIRECTION AND CONTROL AND THAT THIS U.S. PUBLIC LAND SURVEY MONUMENT RECORD IS CORRECT AND COMPLETE TO THE BEST OF MY KNOWLEDGE AND BELIEF.



*James D. Rein*  
SIGNATURE

1-14-2020  
DATE

INDEX NO. L - 21  
3905142000