

At _____ O'Clock _____ M

This form is intended to fulfill the requirements of Chapter AT 17.00 (1) thru (11) U.S. Public Land Survey Monument Location Record, Wisconsin Administrative Code. Use the reverse side of form for continuation.

THOMAS H. LEIGHTON
REGISTER OF DEEDS

U.S. PUBLIC LAND SURVEY MONUMENT LOCATION RECORD

Recorders Data

USPLS CORNER: SOUTH WITNESS MC SECTION: 13 TOWNSHIP: 39 NORTH RANGE: 5 EAST

NAME OF WATERWAY FOR M.C. CORNER: MERCER LAKE SECTION LINE: WEST

~~(CITY/VILLAGE)~~(TOWN) OF: MINOCQUA COUNTY OF: ONEIDA

Description of monument found or placed and all other evidence used as the basis for monument location; including monuments and measurements required if the corner location was reestablished by lost corner proportionate methods. Also indicate name of the original surveyor, original survey date and the corner monument, bearing trees, witness or other reference monuments established, including measured bearing and distance ties, from available survey records.

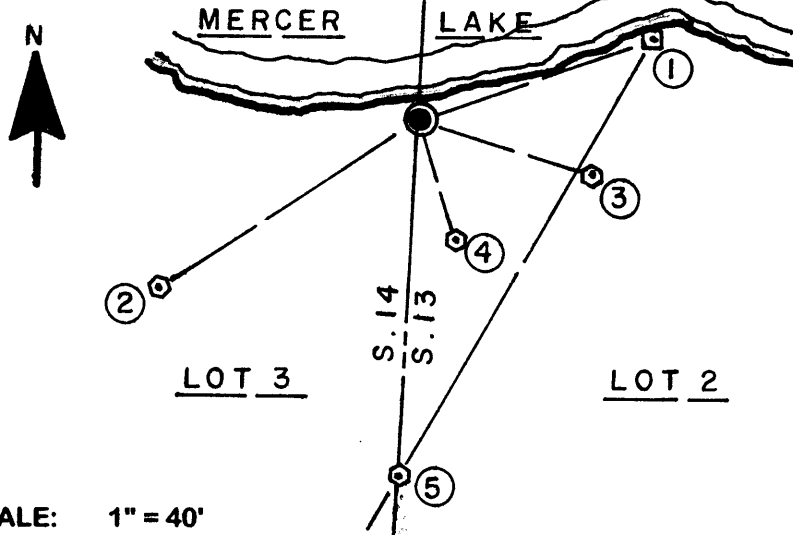
In September 1863, Alexander Anderson/GLO set a wood post as original meander corner and noted OBTs: a 5" Aspen S29°W 37 links and a 5" Bw S25.5°E 46 links; all now obliterated.

In 1947, W.A. Henning notes a monument by map symbol at this witness MC per Plats of Survey filed as C-2239 and B-6062 in Oneida County survey records.

A field search on June 26, 2006 revealed no monumentation evidence at the witness MC location; however, an old 4" square concrete monument was found 7" above grade with a 1.75" angle iron driven along NE edge and 2.5' South of existing rock rip-rapped lake shore, at the NW corner of Lot 2 per Plat of Survey B-6062 and further confirmed by Lot 2 owner Andrew W. Stromdahl. Said lot corner also shown on Plat of Survey B-6062 as being 50.9" easterly of the MC as measured along the lake shore.

Therefore, I drove a standard 2" dia. aluminum monument with stamped Oneida County cap flush in existing lawn area at S72°W 50.90' from the foregoing concrete lot corner monument as the best location for the witness MC. I cut the aluminum monument to 10" long due to rocky refusal below grade. Placement was witnessed by Ronald L. Gabel, owner of Lot 3 of Plat of Survey B-6062. New corner monument falls 4.5' South of rocky rip-rapped lakeshore line bearing N75°E +/-.

Plan view map of monument location with bearing and distance ties to a minimum of four(4) described witness or reference monuments of concrete, natural stone, iron, live bearing trees or equivalent material. If applicable, also show a minimum of two(2) bearing and distance ties to any other monument found and not accepted; including the bearing and distance from the accepted monument.



WITNESS MONUMENT TIES:

- ① Old 4" square concrete monument described above N72°E 50.90'.
- ② New 10" Sb BT S57°W 64.37'.
- ③ New 8.5" Hem BT S72°E 37.28'.
- ④ New 6.5" Sb BT S16°E 25.31'.
- ⑤ Old 1.5" dia. rebar 3" above grade S04°W 74.85'; reportedly per the adjacent owners at the junction of the section line with the boundary line between Lots 2 and 3.

No standard 'T' post set as in lawn area

SCALE: 1" = 40'

Unless otherwise indicated, all bearing tree ties are to a .25" dia. by 2.5" long PK nail with a 1.25" dia. steel washer driven into unblazed right face and a .25" dia. by 2.5" long PK nail with a 2" dia. steel washer stamped BT is also driven into unblazed face of bearing tree at DBH; the basis for measured bearings is by compass to nearest degree and all tie distances are measured horizontal by steel tape corrected to nearest 1/100th feet at standard temperature of 68° F.

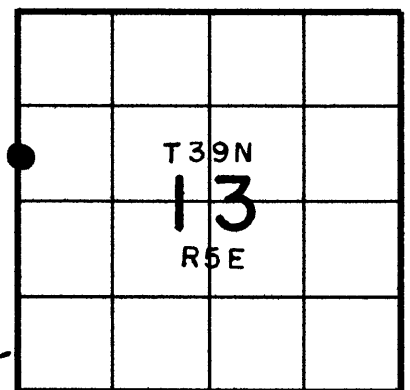
RLS SEAL:



LAND SURVEYOR CERTIFICATE:

I, William C. Rohde, hereby certify that I am duly licensed as a Professional Land Surveyor in the State of Wisconsin; that this USPLS monument location was determined by me and/or under my direct supervision and control; and that this U.S. Public Land Survey Monument Location Record is true and correct to the best of my knowledge and belief.

Signed: *William C. Rohde*
William C. Rohde RLS 841



U.S. PUBLIC LAND SURVEY MONUMENT RECORD

REGISTER OF DEEDS OFFICE
ONEIDA COUNTY
FILED

FEB 06 2020

KYLE J. FRANSON
REGISTER OF DEEDS

Note: This form is intended and designed to fulfill all requirements of the Wisconsin Administrative Code, Chapter A-E 7.08 U.S. Public Land Monument Record (3)(a)(b)(c)(d)(e)(f)(g)(h)(i). An additional sheet may be added if necessary to conform with said requirements.

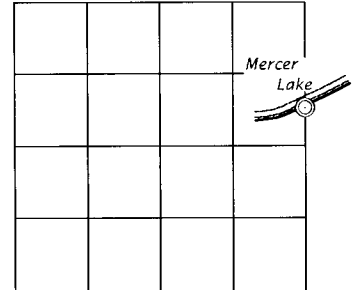
(a) CORNER LOCATION:

Witness Meander Corner of Section 14
Township 39 North
Range 5 East
Town of Minocqua
County of Oneida

North:
East:
Datum:
GNSS Method:
GNSS Control:

(RECORDING AREA)

SECTION 14



(b) HISTORY OF ORIGINAL CORNER ESTABLISHMENT

Original Surveyor:
Date of Survey: Commenced
Completed
Original B.T.'S

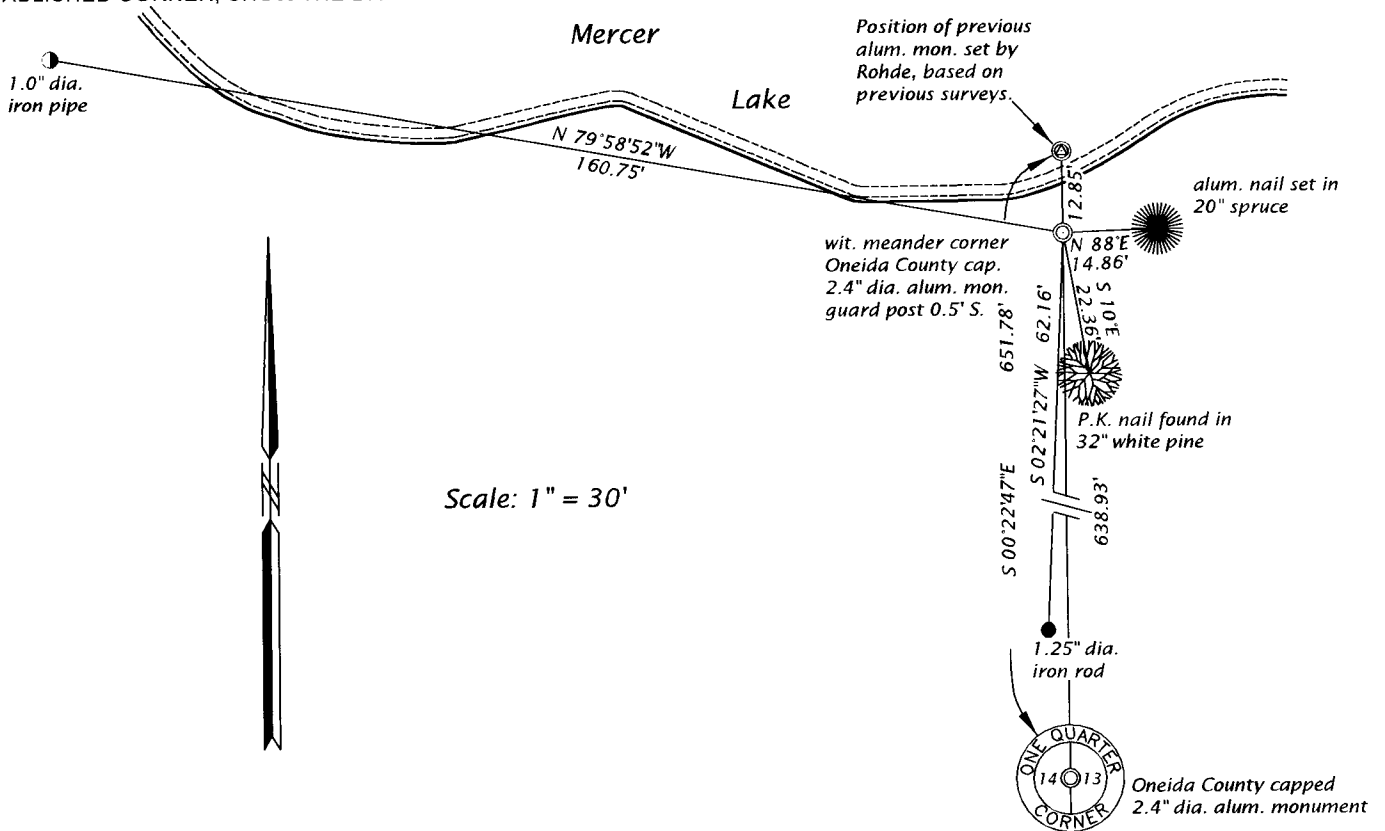
SEE PREVIOUS U.S.P.L.S. MONUMENT RECORD DATED NOVEMBER 20, 2006.

(f)(g)(h) DESCRIPTION OF MONUMENT FOUND AT THIS CORNER AND IF IT WAS ACCEPTED. STATE ALL EVIDENCE (MATERIAL, TESTIMONIAL, OCCUPATIONAL, PLATS, RECORD, OTHER MONUMENTS) USED AS A BASIS FOR ESTABLISHING LOCATION. IF NOT ACCEPTED OR IF NOTHING WAS FOUND, STATE EVIDENCE USED AS BASIS FOR ESTABLISHING LOCATION. IF REESTABLISHED THROUGH LOST CORNER PROPORTIONATE METHODS, INDICATE ALL MONUMENTS, DISTANCES AND DIRECTIONS USED TO ESTABLISH. INDICATE TYPE OF MONUMENT AND SIGN POST FOUND OR SET.

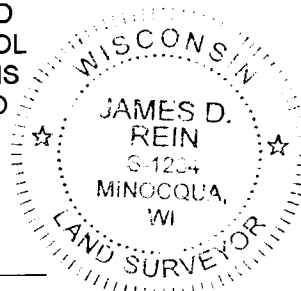
This is a perpetuation of a previous U.S.P.L.S. Monument Record by William C. Rohde, RLS, dated November 20, 2006, and filed in the office of the Oneida County Register of Deeds. A complete history of the corner can be found on the previous monument record. I accept the previous location as a true and faithful perpetuation or reestablishment of the original corner location and further perpetuate it as follows.

August 30, 2019, I, James D. Rein, P.L.S. No. S-1234, found Rohde's aluminum monument washed out and tipped over below the surface of Mercer Lake. We set a new Oneida County 2.4" dia. aluminum monument, as a witness, on line between the West 1/4 Corner and Rohde's witness corner, based on our previous traverse control ties to the corner. See below for updated witnesses.

(c)(d)(e) PLAN VIEW OF CORNER WITH TIES TO AT LEAST 4 WITNESS MONUMENTS. IF IN DISAGREEMENT WITH PREVIOUSLY ESTABLISHED CORNER, SHOW THE DISTANCE BETWEEN THE TWO CORNERS AND ALSO INDICATE THE TIES TO THE DISPUTED CORNER.



(i) I, JAMES D. REIN, PROFESSIONAL LAND SURVEYOR NO. S-1234 HEREBY CERTIFY THAT THE CORNER LOCATION ON THIS RECORD WAS DETERMINED BY ME OR UNDER MY DIRECTION AND CONTROL AND THAT THIS U.S. PUBLIC LAND SURVEY MONUMENT RECORD IS CORRECT AND COMPLETE TO THE BEST OF MY KNOWLEDGE AND BELIEF.



[Handwritten Signature]
SIGNATURE

1-14-2020
DATE

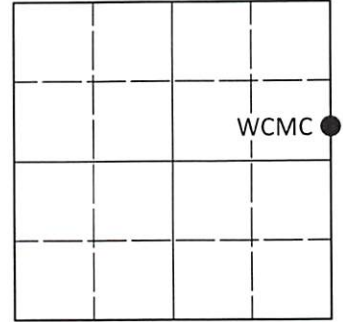
INDEX NO. K-L - 21
3905142400

U.S. PUBLIC LAND SURVEY MONUMENT RECORD

Note: This form is intended and designed to fulfill all requirements of Wisconsin Administrative Code, Chapter A-E 7.08 U.S. Public Land Survey Monument Record (3)(a-i).

(a) CORNER LOCATION
 Wit. Meander Cor. of Secs. 13 & 14
 Township 39 North
 Range 5 East of the 4th P.M.
 Town of Minocqua
 County of Oneida

WISCRS - Oneida County
 N: 249,511.18 USft
 E: 160,501.25 USft
 Datum: NAD 83(2011) ep. 2010.00
 GNSS Method: RTN - Offset
 GNSS Control: WISCRS VRS



Sec. 14, T. 39 N., R. 5 E.

(b)(f)(g)(h) Description of monument found at this corner and if it was accepted, state all evidence (material, testimonial, occupational, plats, records, other monuments) used as a basis for accepting. If not accepted or if nothing was found, state evidence used as basis for establishing location. If re-established through lost corner proportionate methods, indicate all monuments, distances and directions used to establish. Indicate type of monument and sign post found or set.

This record is a perpetuation of the following land corner document(s):

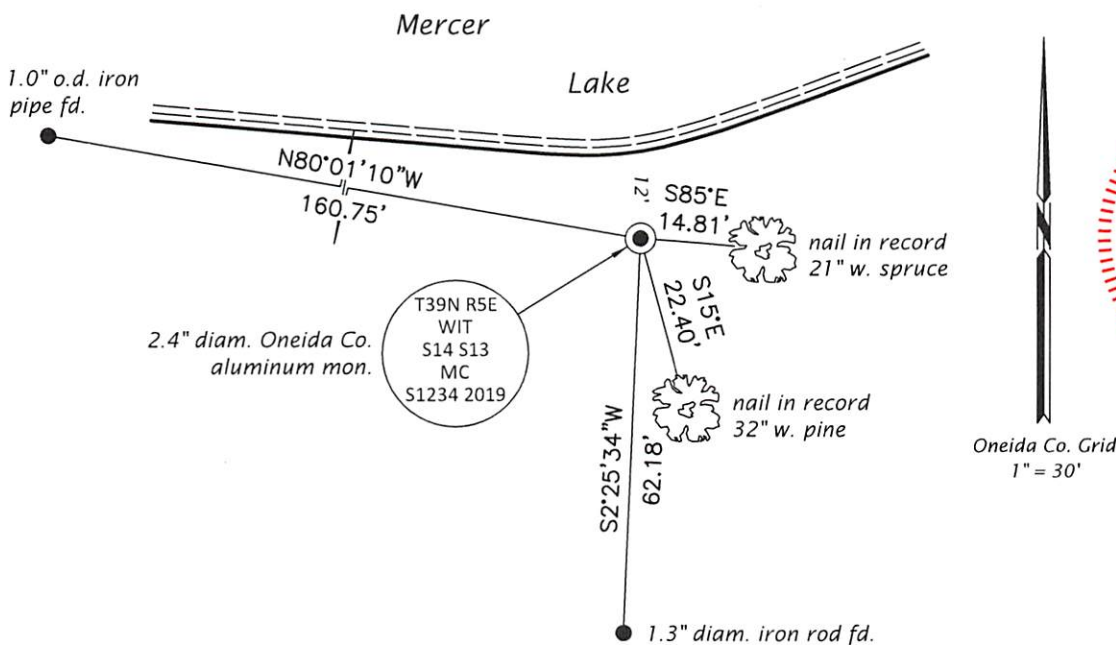
January 14, 2020: USPLS Monument Record by James D. Rein, filed in Oneida County

A complete history of the corner can be found on the previous land corner document(s). I accept the record activity as a true and faithful perpetuation or reestablishment of the original corner location and further perpetuate it as described below.

June 29, 2022: I found and accepted the record monument, a 2.4" diam. aluminum pipe, firmly set, with a 3.3" diam. Oneida Co. aluminum cap projecting 1" above the ground surface. I found or established accessories as indicated below. I found a short white vinyl sign post bearing South, 0.5 ft.

The coordinate value shown has been determined by traversing from two or more GNSS offset points satisfying the accuracy requirements defined and qualified in the 2022 Oneida County Fee Schedule for USPLS Corners.

(c)(d)(e) Plan view of corner with ties to at least 4 witness monuments. If in disagreement with previously established corner, show the distances between the two corners and also indicate the ties to the disputed.

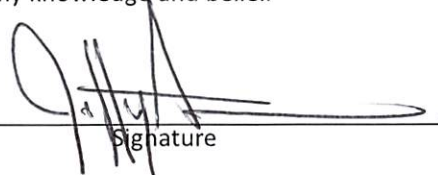


REGISTER OF DEEDS OFFICE
 ONEIDA COUNTY
 FILED

AUG 02 2022

KYLE J. FRANSON
 REGISTER OF DEEDS

(i) I, Jeffrey W. Austin, Professional Land Surveyor No. S-1885, hereby certify that the corner location on this record was determined by me or under my direction and control and that this U.S. Public Land Survey Monument Record is correct and complete to the best of my knowledge and belief.


 Signature Date July 2, 2022