

OCT 13 2014

AT _____ O'CLOCK _____ M
KYLE J. FRANSON
REGISTER OF DEEDS

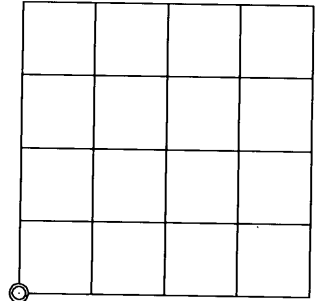
U.S. PUBLIC LAND SURVEY MONUMENT RECORD

Note: This form is intended and designed to fulfill all requirements of the Wisconsin Administrative Code, Chapter A-E 7.08 U.S. Public Land Monument Record (3)(a)(b)(c)(d)(e)(f)(g)(h)(i). An additional sheet may be added if necessary to conform with said requirements.

(a) CORNER LOCATION:	COORDINATES
Southwest corner of Section 14	North: 246300.645
Township 39 North	East: 155344.144
Range 5 East	Control Station: WIS-COORS
Town Minocqua	Latitude: N/A
County of Oneida	Longitude: N/A
	Datum: NAD 83 (2011)
	Method: RTK DIRECT

(RECORDING AREA)

SECTION 14



(b) HISTORY OF ORIGINAL CORNER ESTABLISHMENT

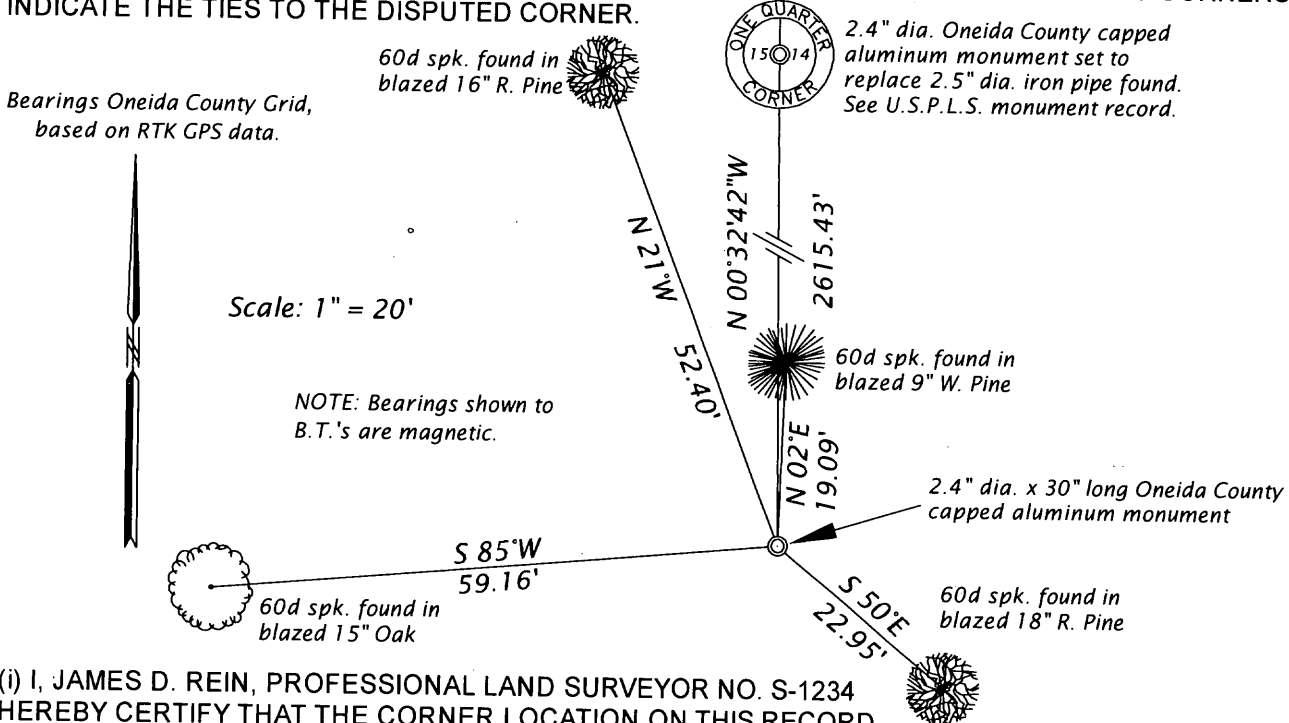
Original Surveyor: Alex. Anderson
 Date of Survey: Commenced September 15th, 1863
 Completed September 20th, 1863
 Original B.T.'S: W. Pine 8", S75°E, 38 lks.
 Aspen 9", S49-1/2°W, 52 lks.

(f)(g)(h) DESCRIPTION OF MONUMENT FOUND AT THIS CORNER AND IF IT WAS ACCEPTED, STATE ALL EVIDENCE (MATERIAL, TESTIMONIAL, OCCUPATIONAL, PLATS, RECORDS, OTHER MONUMENTS) USED AS A BASIS FOR ESTABLISHING LOCATION. IF NOT ACCEPTED OR IF NOTHING WAS FOUND, STATE EVIDENCE USED AS BASIS FOR ESTABLISHING LOCATION. IF REESTABLISHED THROUGH LOST CORNER PROPORTIONATE METHODS, INDICATE ALL MONUMENTS, DISTANCES AND DIRECTIONS USED TO ESTABLISH. INDICATE TYPE OF MONUMENT AND SIGN POST FOUND OR SET.

1965-1967 - Surveyor Wm. H. Stuth, while working on a joint survey for O-I and NEPCO, double proportioned the corner location between the southwest corner of Section 23 and the Meander Corner on the west line of Section 14 near the southerly shore of Marion Lake, and between the south quarter of Section 14 and the south quarter of Section 15. The O-I map shows two bearing trees for corner: 5" W. Pine, N 45°E, 42.3' and 14" W. Pine, S 13°W, 71.5', neither were recovered. This map shows a distance of 2615.2' north to the quarter corner.

March 31, 2014 - James D. Rein, RLS No. 1234, recovered a 2.5" dia. iron pipe, painted blue and extending 8" above the ground. The location of this pipe is harmonious with the O-I record, thus I accept the location as marking the re-established corner position and we replace the iron pipe with a capped 2.4" dia. x 30" long Oneida County aluminum monument, and set a white poly guard post 1 foot north of the corner. Reference ties to four existing bearing trees are shown in plan.

(c)(d)(e) PLAN VIEW OF CORNER WITH TIES TO AT LEAST 4 WITNESS MONUMENTS. IF IN DISAGREEMENT WITH PREVIOUSLY ESTABLISHED CORNER, SHOW THE DISTANCE BETWEEN THE TWO CORNERS AND ALSO INDICATE THE TIES TO THE DISPUTED CORNER.



(i) I, JAMES D. REIN, PROFESSIONAL LAND SURVEYOR NO. S-1234 HEREBY CERTIFY THAT THE CORNER LOCATION ON THIS RECORD WAS DETERMINED BY ME OR UNDER MY DIRECTION AND CONTROL AND THAT THIS U.S. PUBLIC LAND SURVEY MONUMENT RECORD IS CORRECT AND COMPLETE TO THE BEST OF MY KNOWLEDGE AND BELIEF.

SIGNATURE

DATE 8-14-14



3905150000

INDEX NO. N 17