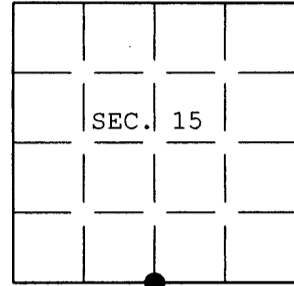


U.S. PUBLIC LAND SURVEY MONUMENT RECORD

Note: This form is intended and designed to fulfill all requirements of Wisconsin Administrative Code, Chapter A-E 7.08 U.S. Public Land Survey Monument Record (3) (a) (b) (c) (d) (e) (f) (g) (h) (i). An additional sheet may be added if necessary to conform with said requirements.

(a) CORNER LOCATION: Plane Coordinates
 1/4 Cor. of Secs. 15 & 22 X:
 Township 39 North Y:
 Range 5 East of the 4th P.M. Datum:
 Town of Minocqua County of Oneida



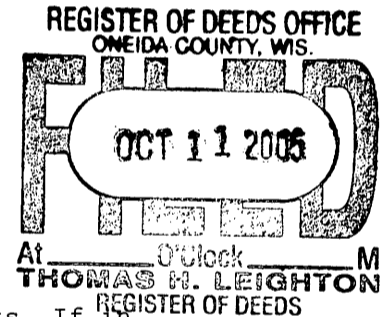
(b) HISTORY OF ORIGINAL CORNER ESTABLISHMENT

Original Surveyor: Alexander Anderson Original Accessories:
 Date of Survey: Commenced Sept. 1863 W.Pine 6" S.39°E., 11 lks.
 Completed Sept. 1863 W.Pine 8" North, 36 lks.

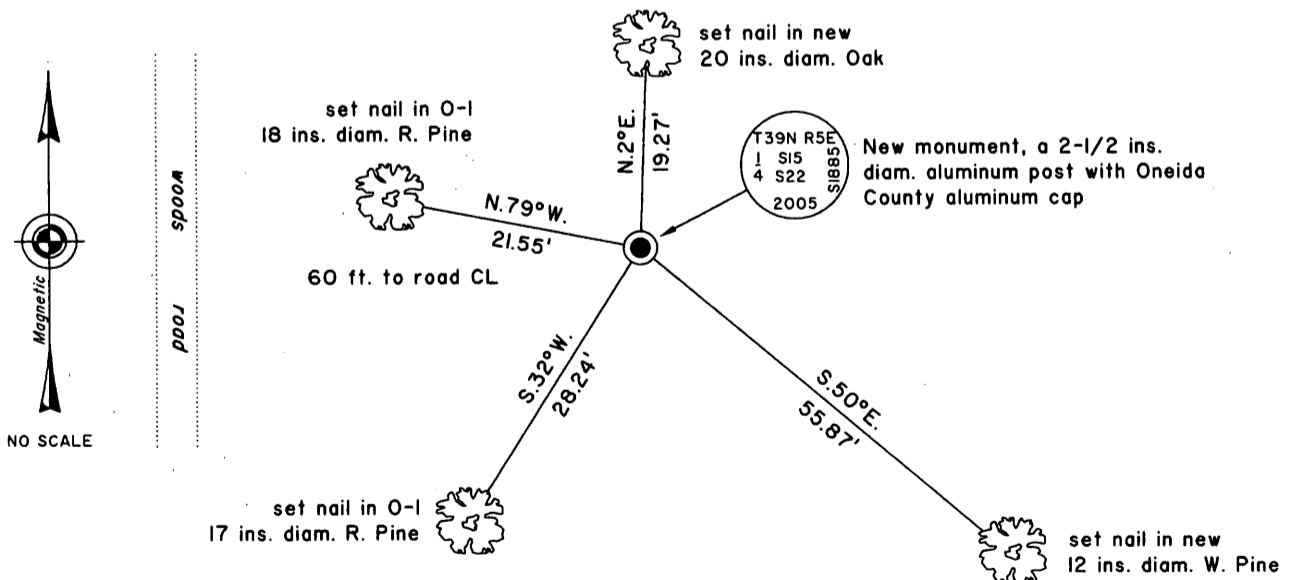
(b) (f) (g) (h) Description of monument found at this corner and if it was accepted, state all evidence (material, testimonial, occupational, plats, records, other monuments) used as a basis for accepting. If not accepted or if nothing was found, state evidence used as basis for establishing location. If re-established through lost corner proportionate methods, indicate all monuments, distances and directions used to establish. Indicate type of monument and sign post found or set.

22 May 1986: Survey map prepared by W.H. Stuth and filed in the office of the Oneida County Surveyor. Corner noted as "BY OTHERS" on standard Owens-Illinois section sheet. 14" R.P. S.26°W., 27.8 ft.; 14" R.P. N.83°W., 21.3 ft.

2 June 2005: I found and accepted a bent 30 ins. long, 2 ins. diam. iron pipe. I replaced the pipe with an aluminum post, 30 ins. long, 2-1/2 ins. diam. with Oneida County aluminum cap projecting 6 ins. above the ground surface. I placed a blue/black "DEEP-1" magnet beneath the new monument. I found and established accessories as shown below and found a white plastic sign post bearing Northeast, 1-1/2 ft. dist.



(c) (d) (e) Plan view of corner with ties to at least 4 witness monuments. If in disagreement with previously established corner, show the distances between the two corners and also indicate the ties to the disputed.



(i) I, Jeffrey W. Austin, Registered Land Surveyor No. S-1885, hereby certify upon honor that the corner location on this record was determined by me or under my direction and control and that this U.S. Public Land Survey Monument Record is correct and complete to the best of my knowledge and belief.

Signature: *[Handwritten Signature]* Date: 7 June 2005



3905150020

INDEX NO. N-15