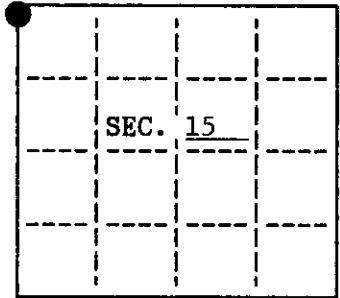


**U.S. PUBLIC LAND SURVEY MONUMENT RECORD**

Note: This form is intended and designed to fulfill all requirements of Wisconsin Administrative Code, Chapter A-B 7.08 U.S. Public Land Survey Monument Record (3)(a)(b)(c)(d)(e)(f)(g)(h)(i). An additional sheet may be added if necessary to conform with said requirements.

(a) CORNER LOCATION: State Plane Coordinates  
 Meander corner of Sec.15&16 X \_\_\_\_\_  
 Township 39 North Y \_\_\_\_\_  
 Range 5 East Datum Base \_\_\_\_\_  
 Town/City Minocqua County of Oneida



(b) HISTORY OF ORIGINAL CORNER ESTABLISHMENT  
 Original Surveyor: Alexander Anderson Original B.T.'S  
 Date of Survey: Commenced September, 1863 Spruce 6 S42°E, 28 Lks.  
 Completed September, 1863 Spruce 6 S27°W, 16 Lks.

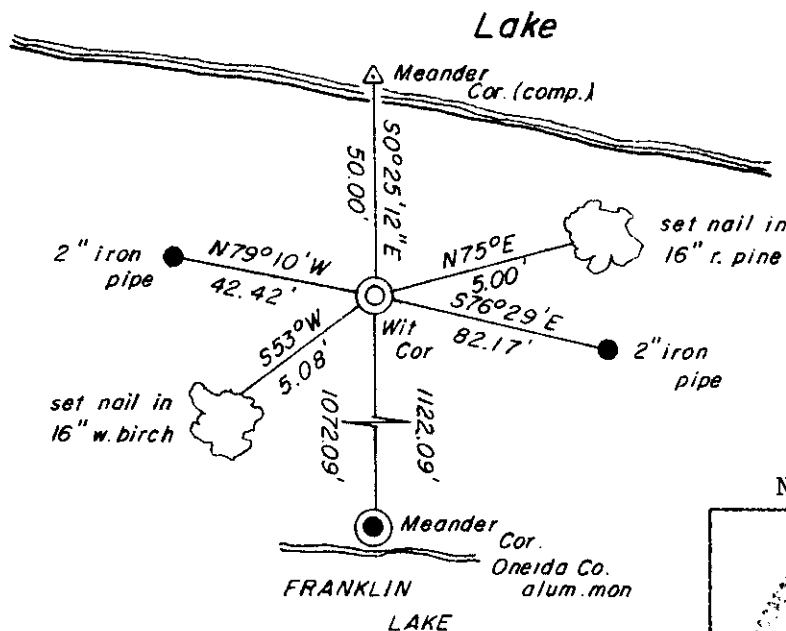
(b)(f)(g)(h) Description of monument found at this corner and if it was accepted, state all evidence (material, testimonial, occupational, plats, records, other monuments) used as a basis for accepting. If not accepted or if nothing was found, state evidence used as basis for establishing location. If reestablished through lost corner proportionate methods, indicate all monuments, distances and directions used to establish. Indicate type of monument and sign post found or set.

December, 1971 - Survey map by William S. Cameron, Reg. Land Surveyor, indicates corner is a wood post found in place July 1, 1969.

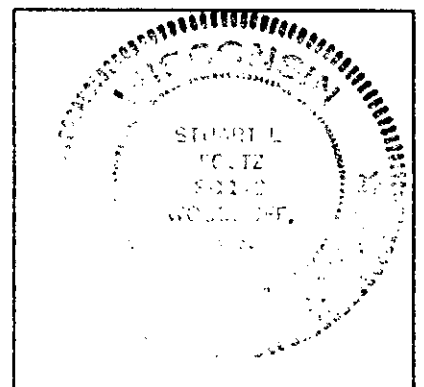
August 22, 1994 - I found no evidence of the original survey or of Cameron's wood post. I reestablished this corner by using two of Cameron's lot corners as shown below. I witnessed this location with an Oneida County Aluminum Monument set on the line common to Sections 15 & 16, 50.00 feet south of the true corner location. I witnessed the aluminum monument as shown below and set a plastic signpost Northeast 1.5 feet.

(c)(d)(e) Plan view of corner with ties to at least 4 witness monuments. If in disagreement with previously established corner, show the distances between the two corners and also indicate the ties to the disputed.

*Adrian*



Not to Scale



(i) I, Stuart L. Foltz, Reg. Land Surveyor #S-1170 hereby certify that the corner location on this record was determined by me or under my direction and control and that this U.S. Public Land Survey Monument Record is correct and complete to the best of my knowledge and belief.

*Stuart L. Foltz* 3/2/1995  
 Signature Date