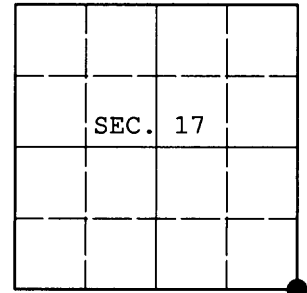


U.S. PUBLIC LAND SURVEY MONUMENT RECORD

Note: This form is intended and designed to fulfill all requirements of Wisconsin Administrative Code, Chapter A-E 7.08 U.S. Public Land Survey Monument Record (3) (a) (b) (c) (d) (e) (f) (g) (h) (i). An additional sheet may be added if necessary to conform with said requirements.

(a) CORNER LOCATION: WISCORS (Oneida County)
 Cor. of Secs. 16, 17, 20 & 21 N: 246,449.738 USft
 Township 39 North E: 144,865.468 USft
 Range 5 East of the 4th P.M. Datum: NAD 1983(2011)
 Town of Minocqua County of Oneida



(b) HISTORY OF ORIGINAL CORNER ESTABLISHMENT

Original Surveyor: Alexander Anderson Original Accessories:
 Date of Survey: Commenced: Sept. 15, 1863 cedar 12" N27°E, 11 lks.
 Completed: Sept. 20, 1863 cedar 18" S48°E, 11 lks.

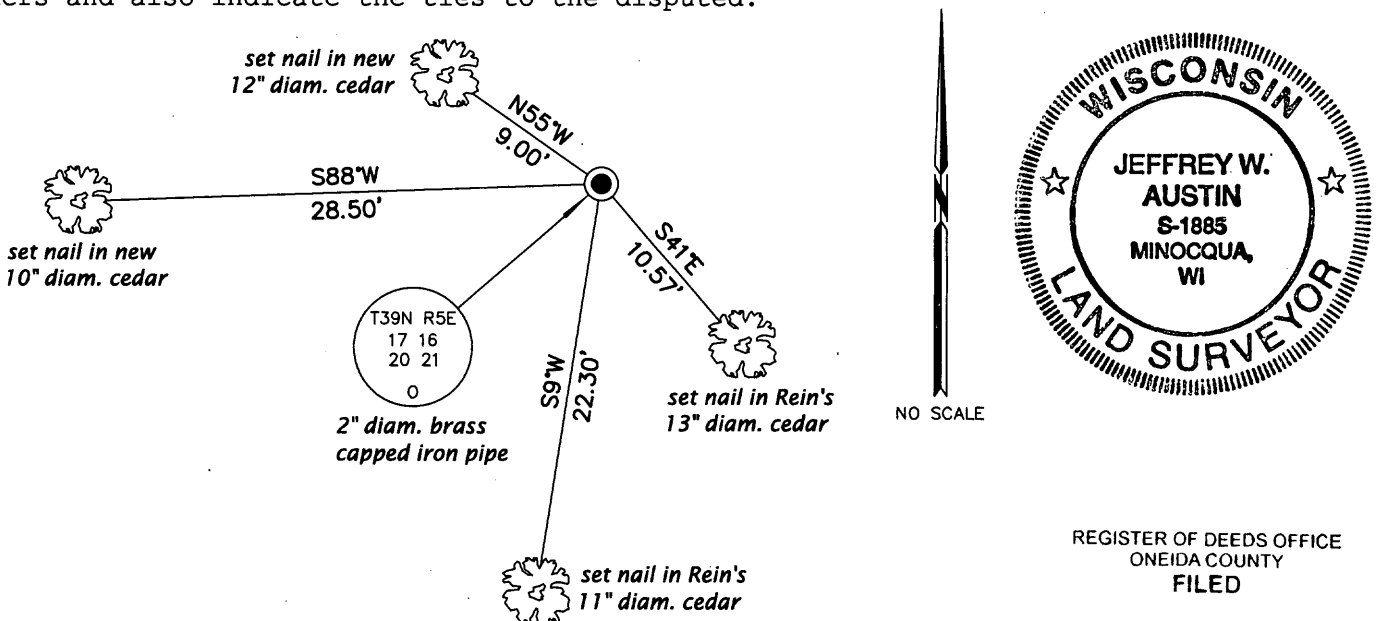
(b) (f) (g) (h) Description of monument found at this corner and if it was accepted, state all evidence (material, testimonial, occupational, plats, records, other monuments) used as a basis for accepting. If not accepted or if nothing was found, state evidence used as basis for establishing location. If re-established through lost corner proportionate methods, indicate all monuments, distances and directions used to establish. Indicate type of monument and sign post found or set.

NOTE: This is a perpetuation of a previous USPLS Monument Record by James D. Rein, RLS dated January 29, 1991 and filed in the office of the Oneida County Register of Deeds. A complete history of the corner can be found on the previous monument record. I accept the previous location as a true and faithful perpetuation or reestablishment of the original corner location and further perpetuate it as follows.

July 19, 2013: I found and accepted Rein's monument, a 2" diam. iron pipe with thread-on brass cap projecting 18" above the bog surface. A 2" diam. iron pipe with coupling is adjacent to the monument. Rein's northerly bearing trees are down. I found or established accessories as shown below and found a white plastic sign post bearing Northeast, 1 ft. dist.

The coordinates shown were derived from a direct static GPS observation referenced to a VRS control point generated by the WISCORS network.

(c) (d) (e) Plan view of corner with ties to at least 4 witness monuments. If in disagreement with previously established corner, show the distances between the two corners and also indicate the ties to the disputed.

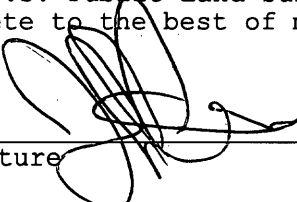


REGISTER OF DEEDS OFFICE
 ONEIDA COUNTY
 FILED

AUG 26 2013

AT _____ O'CLOCK _____ M
 KYLE J. FRANSON
 REGISTER OF DEEDS

(i) I, Jeffrey W. Austin, Registered Land Surveyor No. S-1885, hereby certify that the corner location on this record was determined by me or under my direction and control and that this U.S. Public Land Survey Monument Record is correct and complete to the best of my knowledge and belief.

Signature  Date AUG. 5, 2013

U.S. PUBLIC LAND SURVEY MONUMENT RECORD

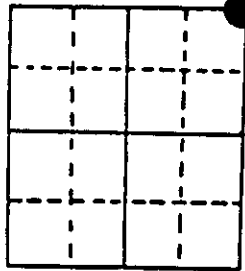
Note: This form is intended and designed to fulfill all requirements of Wisconsin Administrative Code, Chapter A-E 7.08 U.S. Public Land Survey Monument Record (3) (a) (b) (c) (d) (e) (f) (g) (h) (i). An additional sheet may be added if necessary to conform with said requirements.

(a) Corner location: Township 39 North

Range 5 East/West

Town/City/Village Minocqua

County Oneida



Section 20

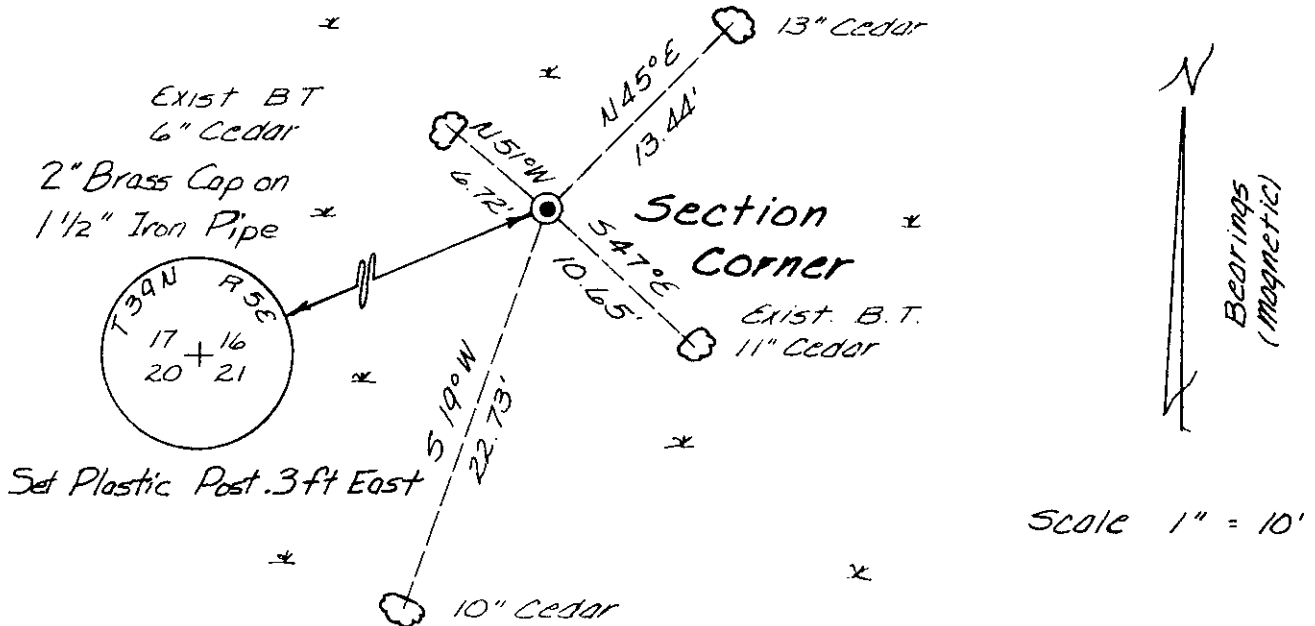
(b) (f) (g) (h) Description of monument found at this corner and if it was accepted, state all evidence (material, testimonial, occupational, plats, records, other monuments) used as a basis for accepting. If not accepted or if nothing was found, state evidence used as basis for establishing location. If reestablished through lost corner proportionate methods, indicate all monuments, distances and directions used to establish. Indicate type of monument found or set and sign post.

1863; Alex Anderson (Deputy Surveyor) set Post for Corner to Sections 16, 17, 20 & 21. Bearing Trees: Cedar 12" N27°E 11 Links, Cedar 18" S48°E 11 Links.

Nov. 3-1927 Harry C. Hall, Plat of McKenna's Subdivision shows 1343.3' from E 1/16 Cor. of Sect. 17 & 20 to orig. Section Cor., our measurement is 1340.93'.

1990 James D. Rein found 2" dia. Brass Cap on a 1 1/2" dia. iron pipe referenced by existing bearing trees as shown in the plan view. Made additional bearing trees and set plastic witness stake as shown in the plan view.

(c) (d) (e) Plan view of corner with ties to at least 4 witness monuments. If in disagreement with previously established corner, show the distances between the two corners and also indicate the ties to the disputed corner.



(i) I, James D. Rein, Registered Land Surveyor No. 1234

(type or print name) certify that the corner location on this record was determined by me or under my direction and control and that this U.S. Public Land Survey Monument Record is correct and complete to the best of my knowledge and belief.

James D. Rein January 29th, 1991
Signature Date



3905170000

Stamp

Index No. _____