

U.S. PUBLIC LAND SURVEY MONUMENT RECORD

NOV 13 2017

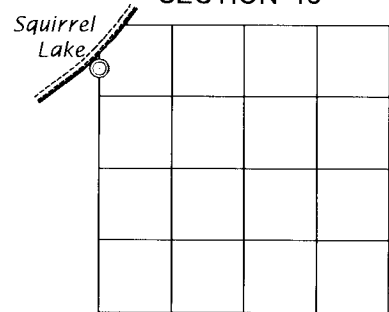
Note: This form is intended and designed to fulfill all requirements of the Wisconsin Administrative Code, Chapter A-E 7.08 U.S. Public Land Monument Record (3)(a)(b)(c)(d)(e)(f)(g)(h)(i). An additional sheet may be added if necessary to conform with said requirements.

AT _____ O'CLOCK _____ M
KYLE J. FRANSON
REGISTER OF DEEDS

(a) CORNER LOCATION: WISCRS - Oneida County
Meander Corner of Section 16 North: 250795.721
Township 39 North East: 144782.577
Range 5 East Datum: NAD 1983 (2011)
Town of Minocqua GNSS Method: RTK - offset traverse
County of Oneida GNSS Control: WISCORS VRS

(RECORDING AREA)

SECTION 16



(b) HISTORY OF ORIGINAL CORNER ESTABLISHMENT

Original Surveyor: Alexander Anderson
Date of Survey: Commenced September 15th, 1863
Completed September 20th, 1863
Original B.T.'S: Birch 5", S 19°W, 13 lks
Aspen 6", S 48°E, 9 lks

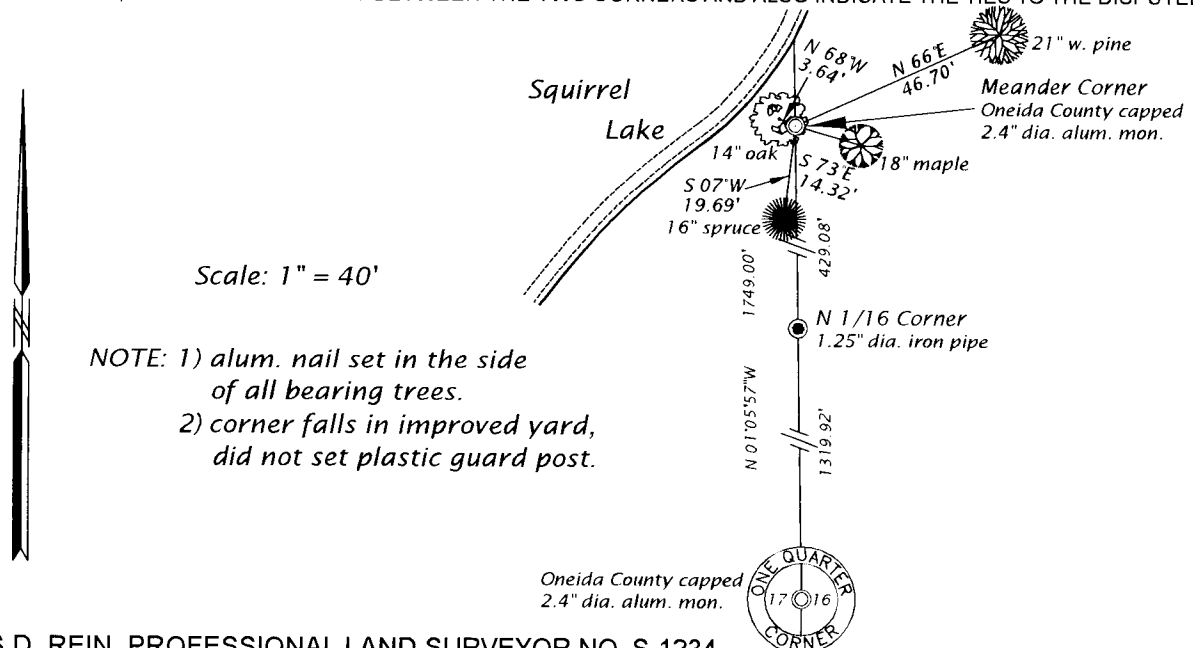
(f)(g)(h) DESCRIPTION OF MONUMENT FOUND AT THIS CORNER AND IF IT WAS ACCEPTED, STATE ALL EVIDENCE (MATERIAL, TESTIMONIAL, OCCUPATIONAL, PLATS, RECORD, OTHER MONUMENTS) USED AS A BASIS FOR ESTABLISHING LOCATION. IF NOT ACCEPTED OR IF NOTHING WAS FOUND, STATE EVIDENCE USED AS BASIS FOR ESTABLISHING LOCATION. IF REESTABLISHED THROUGH LOST CORNER PROPORTIONATE METHODS, INDICATE ALL MONUMENTS, DISTANCES AND DIRECTIONS USED TO ESTABLISH. INDICATE TYPE OF MONUMENT AND SIGN POST FOUND OR SET.

April 3, 1913 - D. H. Vaughan, Oneida County Surveyor, in Section 17, T39N, R5E, (Old Field Book 7, page 95) determined that meander corner was lost and re-established it by projecting north from the southeast section corner through the east quarter corner, 26.50 chains (1749.00 feet), set iron pipe for the corner and made no bearing trees.

September 30, 1952 - E. F. Kowalke, Surveyor, assisted by Lloyd Scott, in Section 16, T39N, R5E, (Kowalke Field Book 10, page 48), was unable to find D. H. Vaughan's iron pipe for meander corner. They did recover evidence of the North 1/8 corner which they concluded was D.H.V.'s stake and perpetuated the position with an iron pipe and marked a 14" Oak, N25°E, 7 feet.

September 18, 2017 - James D. Rein, PLS No. 1234, we were unable to find any evidence of the meander corner and thus re-established it by projecting a line north from the quarter corner common to Sections 16 and 17, through the North 1/16 Corner, as perpetuated by E. F. Kowalke to intersect near the southeasterly shore of Squirrel Lake at a distance of 1749.00 feet from said quarter corner. We set a capped 2.4" dia. X 30" long flange bottom aluminum monument and made reference ties as shown in the plan.

(c)(d)(e) PLAN VIEW OF CORNER WITH TIES TO AT LEAST 4 WITNESS MONUMENTS. IF IN DISAGREEMENT WITH PREVIOUSLY ESTABLISHED CORNER, SHOW THE DISTANCE BETWEEN THE TWO CORNERS AND ALSO INDICATE THE TIES TO THE DISPUTED CORNER.



Scale: 1" = 40'

NOTE: 1) alum. nail set in the side of all bearing trees.
2) corner falls in improved yard, did not set plastic guard post.

(i) I, JAMES D. REIN, PROFESSIONAL LAND SURVEYOR NO. S-1234 HEREBY CERTIFY THAT THE CORNER LOCATION ON THIS RECORD WAS DETERMINED BY ME OR UNDER MY DIRECTION AND CONTROL AND THAT THIS U.S. PUBLIC LAND SURVEY MONUMENT RECORD IS CORRECT AND COMPLETE TO THE BEST OF MY KNOWLEDGE AND BELIEF.

[Signature]
SIGNATURE
Nov. 7, 2017
DATE

INDEX NO. JK - 9
3905173400