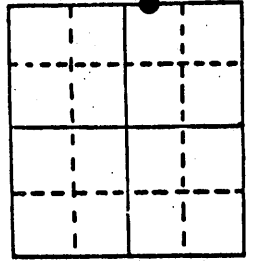


U.S. PUBLIC LAND SURVEY MONUMENT RECORD

Note: This form is intended and designed to fulfill all requirements of Wisconsin Administrative Code, Chapter A-E 5.02, U.S. Public Land Survey Monument Record (3) (a) (b) (c) (d) (e) (f) (g) (h) (i). An additional sheet may be added if necessary to conform with said requirements.

(a) Corner location: Township 39 North
 Range 5 East

East Meander
 corner
 North line of
 Section 19



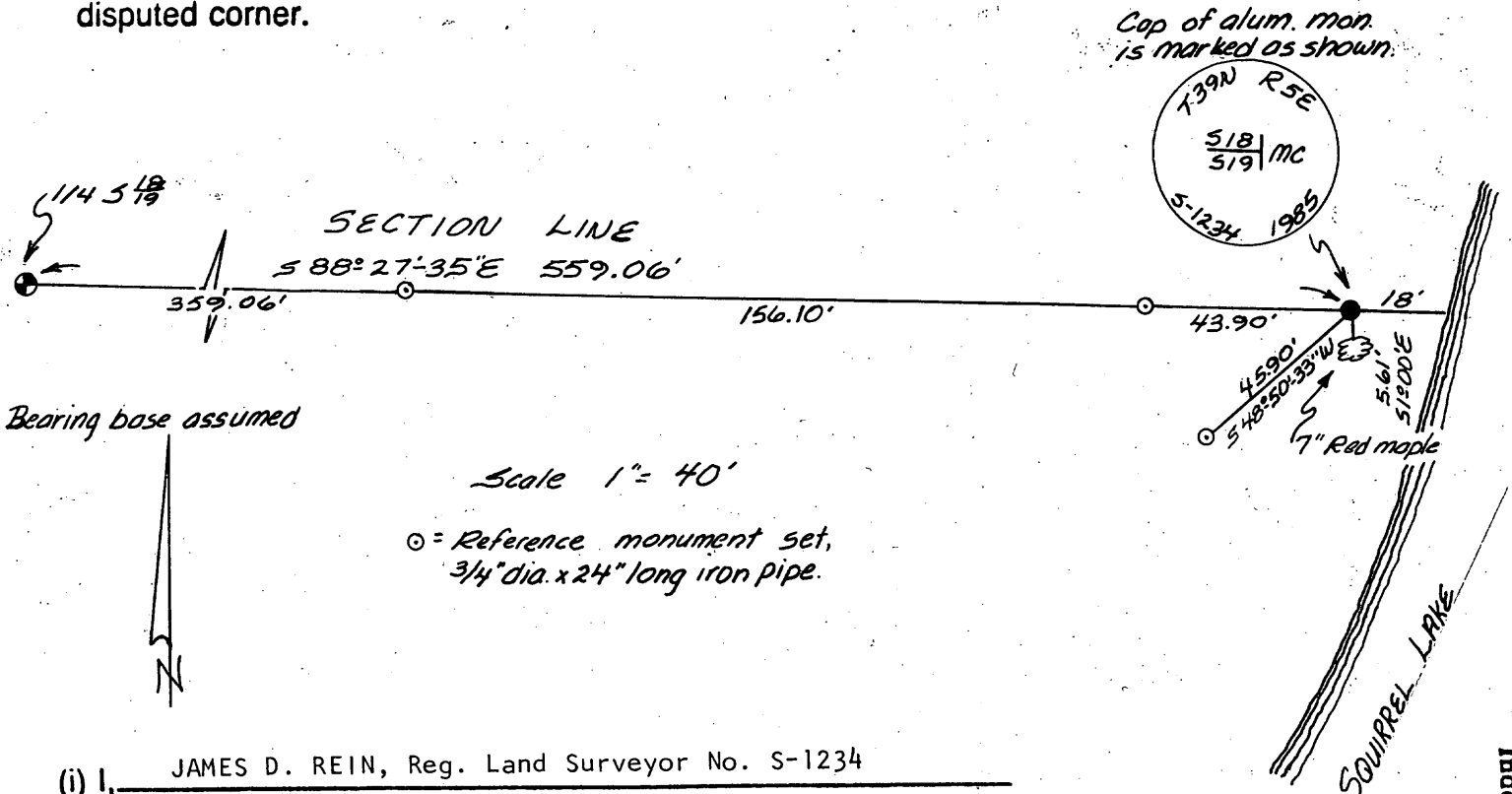
Town: Minocqua
 County: Oneida

Section 19

(b) (f) (g) (h) Description of monument found at this corner and if it was accepted, state all evidence (material, testimonial, occupational, plats, records, other monuments) used as a basis for accepting. If not accepted or if nothing was found, state evidence used as basis for establishing location. If reestablished through lost corner proportionate methods, indicate all monuments, distances and directions used to establish.

Sept. 1863- Alex Anderson, Deputy Surveyor - Intersect Squirrel Lake and set meander corner W.Pine 24" S67°W, 8 links; W. Pine 15" N38°W, 29 links
 Aug. 1956- E. F. Kowalke, Surveyor, Map No. 2-B-66 identifies corner marked by Cedar post and iron pipe.
 June, 1962- James G. Griffin, Surveyor- Northwoods Surveyors Map identifies corner monumented with iron pipe, witnessed by 5" Maple S2°W, 5.5 feet
 April 29, 1985- James D. Rein, R.L.S. found corner monumented with a 1-3/4" diameter iron pipe and point of rotted 3" x 3" square wood post. Existing bearing tree 7" Red Maple bears S1°-00'E, 5.61 feet. I accept the iron pipe as the best remaining evidence of the corner position and replace it with a capped 2" dia. x 30" long aluminum monument marked as shown.

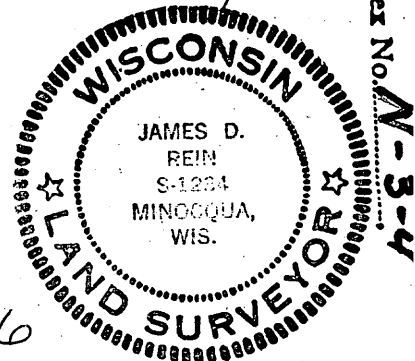
(c) (d) (e) Plan view of corner with ties to at least 4 witness monuments. If in disagreement with previously established corner, show the distances between the two corners and also indicate the ties to the disputed corner.



(i) I, JAMES D. REIN, Reg. Land Surveyor No. S-1234
 (type or print name) certify that the corner location on this record was determined by me or under my direction and control and that this U.S. Public Land Survey Monument Record is correct and complete to the best of my knowledge and belief.

James D. Rein
 Signature

May 24, 1985
 Date



3905180016