

CERTIFIED LAND CORNER RESTORATION

U. S. PUBLIC LAND SURVEY MONUMENT RECORD

State of Wisconsin

County of ONEIDA

ss.

I JAMES D. REIN, do hereby certify that on the 11th day of November, 1982, I found evidence of the South Quarter corner of Section 18 Township 39 North, Range 5 East, Fourth Principal Meridian, as described hereon; and that from this evidence I established a new monument and accessories as described hereon to perpetuate the original location of this corner:

Description of original monument and accessories and subsequent restorations:

Alex Anderson, U. S. Deputy Surveyor - September 1863, Set post Birch 12" S54°W, 14 links - Birch 18" N75½°E, 10 links
D. H. Vaughn, Oneida County surveyor Found original trees
E. F. Kowalke, Surveyor, July 16, 1956 Found old post, set new cedar post and iron pipe.
James G. Griffin, Surveyor - June 1962 - Legends corner as marked by iron pipe, witnessed by a 12" Maple N11°E, 18.2 feet and a 6" Basswood N61°W, 19.0.

Description of corner evidence found:

A 2" inside diameter iron pipe up 5" and 3" square cedar post up two feet. Remains of a Yellow Birch stump (identified by bark from roots and paired vessels of wood under 12X magnification) S64°W, 9 ft. and remains of a Birch Stump (identified by paired vessels from root wood under 12x magnification) N75½°E, 6½ feet
Existing bearing trees:
9" Basswood N60°W, 18.94 feet
12" Sugar Maple N14°E, 18.16 feet

Description of monument and accessories I established to perpetuate the location of this corner:

Set P.K. nails in the existing bearing trees and marked and set P.K. nails in the face of the following new bearing trees:

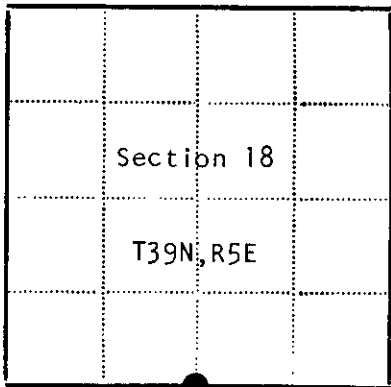
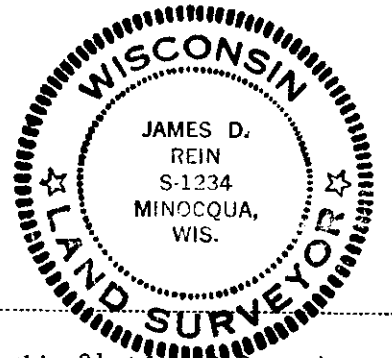
9" Yellow Birch N86°E, 28.40 feet
9" Sugar Maple S34°W, 23.21 feet

(See plan view on back)

Compared with all record data & accepted as correct.

[Signature]

Oneida County Surveyor 27 Apr 1983



● - Corner monument restored
□ -

Resident witnesses.....

Dated at Minocqua Wisconsin, this 21st day of December 1982..

Signature [James D. Rein] Title Reg. Land Surveyor (County Surveyor, Registered Land Surveyor, or other duly authorized official)

Surveyors Registration No. S-1234

Office of..... County of.....

I hereby certify that the within instrument was filed in this office for record on the..... day of..... 19....., and was filed in Book No..... Page No..... of County Records.

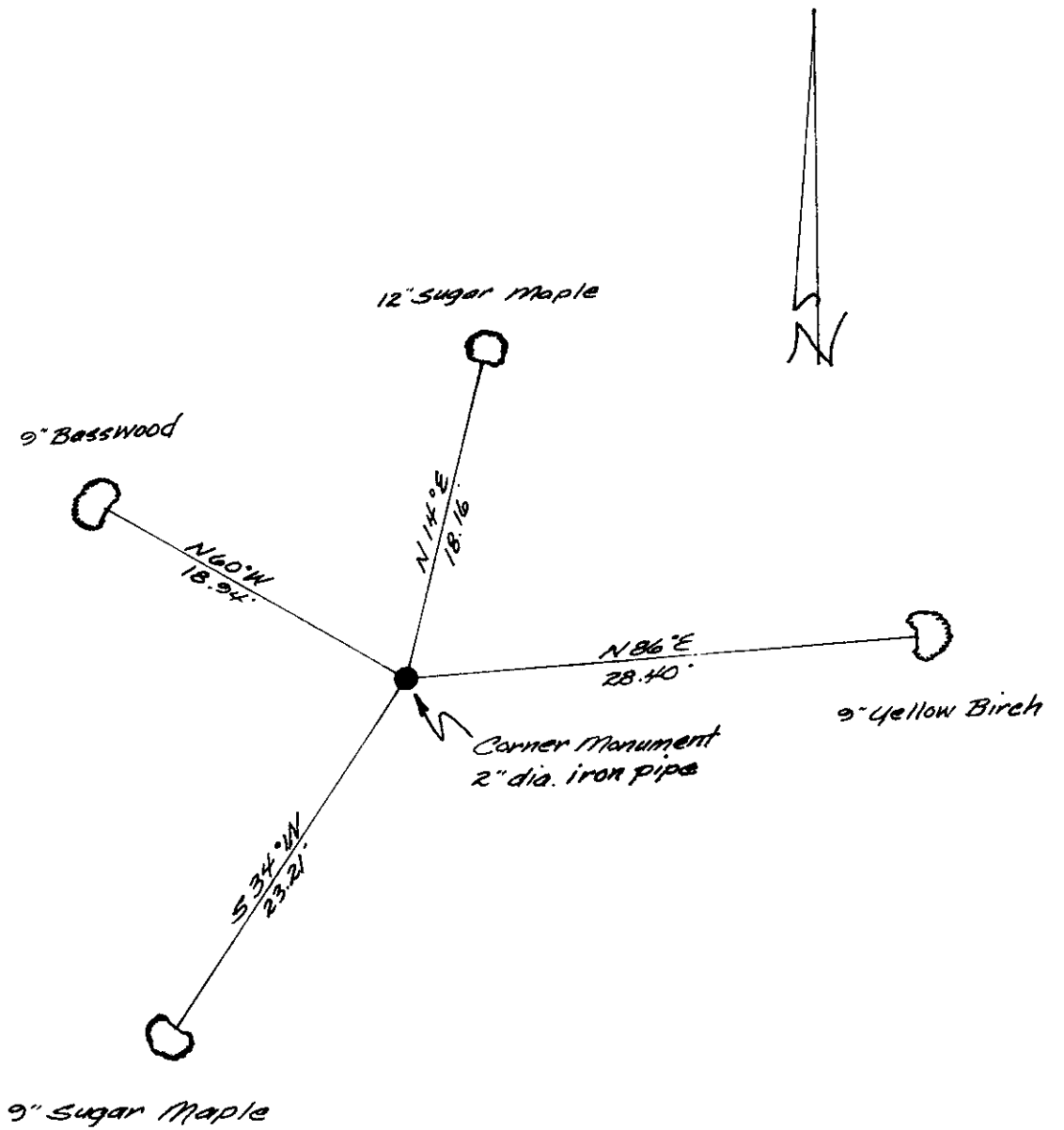
Signature..... Title.....

Township....., Range....., Section....., Index No....., Page No.....

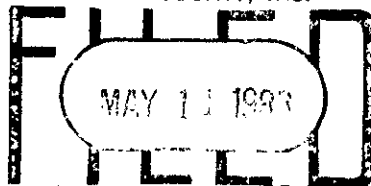
N-3

Scale 1" = 10'

Bearings Magnetic



REGISTER OF DEEDS OFFICE
ONEIDA COUNTY, WIS.



At 4:15 O'Clock P M
DORIS VERAGE KUEHN
REGISTER OF DEEDS

U.S. PUBLIC LAND SURVEY MONUMENT RECORD

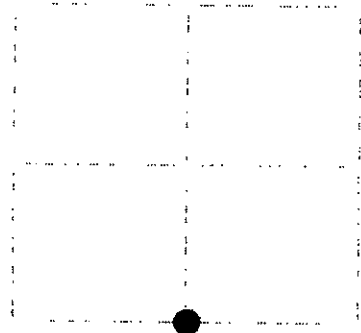
Note: This form is intended and designed to fulfill all requirements of Wisconsin Administrative Code, Chapter A-E 7.08 U.S. Public Land Survey Monument Record (a) (b) (c) (d) (e) (f) (g) (h) (i). An additional sheet may be added if necessary to conform with said requirements.

(a) Corner location: Township 39 North

Range 5 East

Town of Minocqua

Oneida County, Wisconsin



Section 18

(b) (f) (g) (h) Description of monument found at this corner and if it was accepted, state all evidence (material, testimonial, occupational, plats, records, other monuments) used as a basis for accepting. If not accepted or if nothing was found, state evidence used as basis for establishing location. If reestablished through lost corner proportionate methods, indicate all monuments, distances and directions used to establish. Indicate type of monument found or set and sign post.

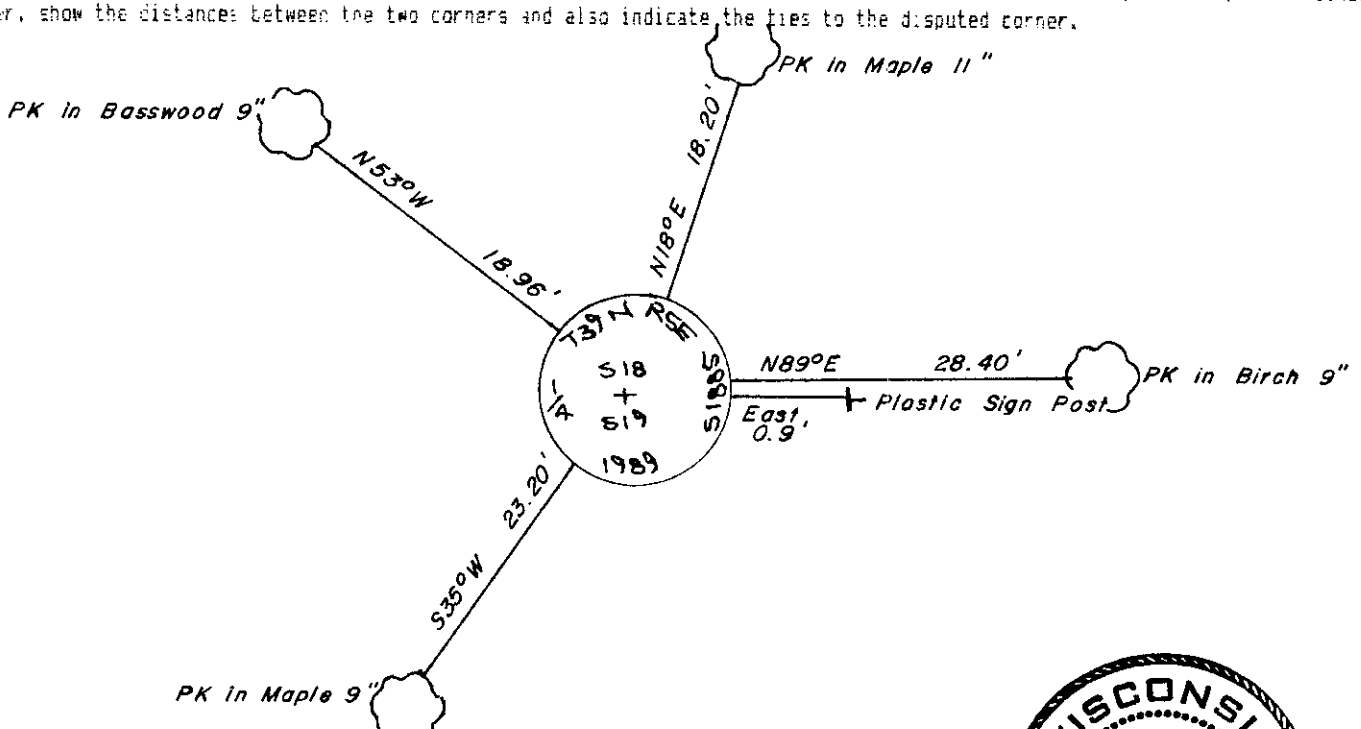
September, 1863: Alexander Anderson set a wood post: Birch 12" S54°W, 14 lks., Birch 18" N75-1/2°E, 10 lks.

June, 1962: Northwoods Surveyors accepts iron pipe: Maple 12" N11°E, 18.2', Basswood 6" N61°W, 19.0'.

November 16, 1981: Wilderness Surveying (map C-124) accepts 2" dia. iron pipe: Basswood 9" N50°W, 18.94', Sugar Maple 12" N14°E, 19.15', Yellow Birch 9" N85°E, 28.40', Sugar Maple 9" S34°W, 23.21'.

November 22, 1989: I found and accepted a 2" dia. 30" long iron pipe and replaced pipe with 2-1/2" dia. 30" long aluminum pipe with 3-1/4" dia. aluminum tablet stamped as shown below. I found the following existing bearing trees with Pⁿ nails: Yellow Birch 9" N89°E, 28.40', Maple 9" S35°W, 23.20', Maple 11" N18°E, 18.20', Basswood 9" N53°W, 18.96'. I also set a plastic sign post: East, 0.9'.

(c) (d) (e) Plan view of corner with ties to at least four witness monuments. If in disagreement with previously established corner, show the distance between the two corners and also indicate the ties to the disputed corner.



I, Jeffrey W. Austin, Registered Land Surveyor 5-1985 certify that the corner location on this record was determined by me or under my direction and control and that this U.S. Public Land Survey Monument Record is correct and complete to the best of my knowledge and belief.

Jeffrey W. Austin

JANUARY 23, 1990



INDEX NO. N-3

3905180020

U.S. PUBLIC LAND SURVEY MONUMENT RECORD

REGISTER OF DEEDS OFFICE
ONEIDA COUNTY
FILED

JAN 12 2023

KYLE J. FRANSON
REGISTER OF DEEDS

Note: This form is intended and designed to fulfill all requirements of the Wisconsin Administrative Code, Chapter A-E 7.08 U.S. Public Land Monument Record (3)(a)(b)(c)(d)(e)(f)(g)(h)(i). An additional sheet may be added if necessary to conform with said requirements.

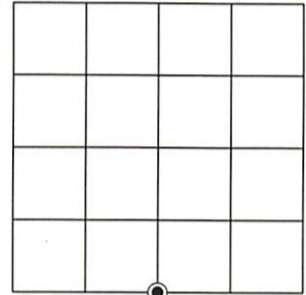
(a) CORNER LOCATION:

South Quarter Corner of Section 18
Township 39 North
Range 5 East
Town of Minocqua
County of Oneida

North:
East:
Datum:
GNSS Method:
GNSS Control:

(RECORDING AREA)

SECTION 18



(b) HISTORY OF ORIGINAL CORNER ESTABLISHMENT

Original Surveyor:
Date of Survey: Commenced
Completed
Original B.T.'S

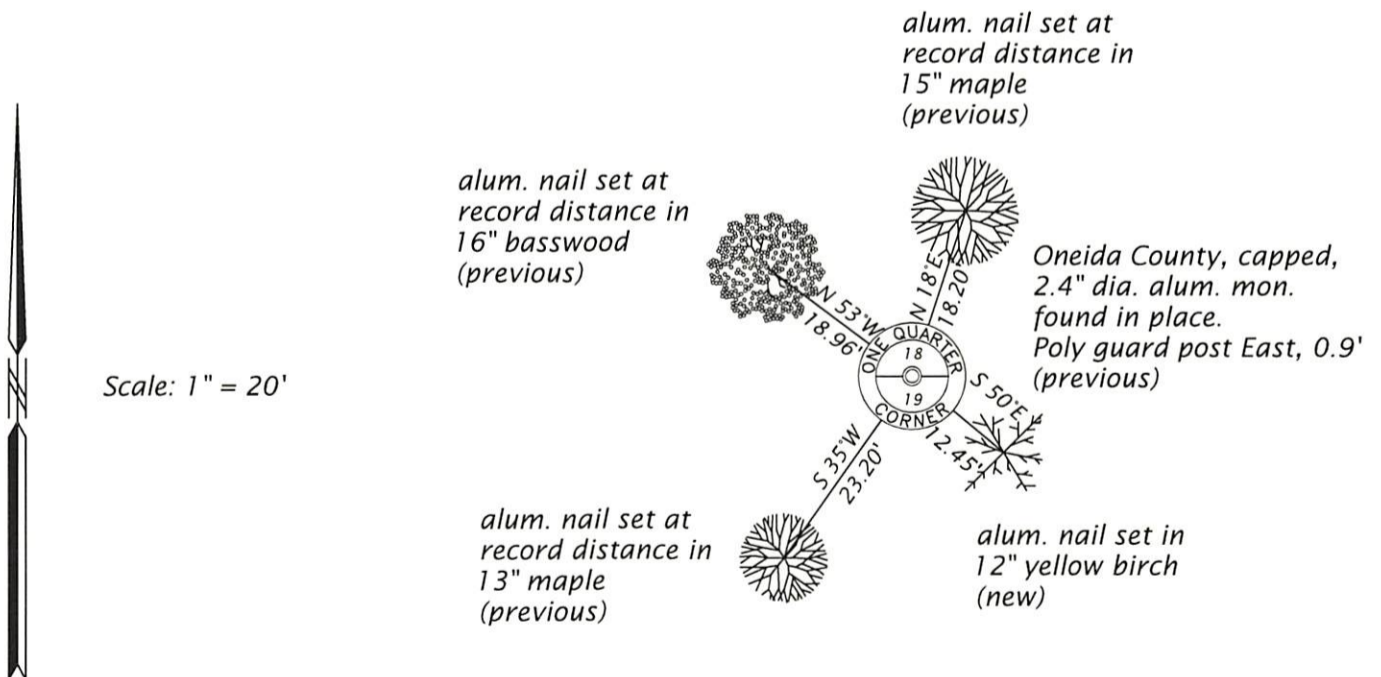
SEE PREVIOUS U.S.P.L.S. MONUMENT
RECORD DATED JANUARY 23, 1990

(f)(g)(h) DESCRIPTION OF MONUMENT FOUND AT THIS CORNER AND IF IT WAS ACCEPTED, STATE ALL EVIDENCE (MATERIAL, TESTIMONIAL, OCCUPATIONAL, PLATS, RECORD, OTHER MONUMENTS) USED AS A BASIS FOR ESTABLISHING LOCATION. IF NOT ACCEPTED OR IF NOTHING WAS FOUND, STATE EVIDENCE USED AS BASIS FOR ESTABLISHING LOCATION. IF REESTABLISHED THROUGH LOST CORNER PROPORTIONATE METHODS, INDICATE ALL MONUMENTS, DISTANCES AND DIRECTIONS USED TO ESTABLISH. INDICATE TYPE OF MONUMENT AND SIGN POST FOUND OR SET.

This is a perpetuation of a previous U.S.P.L.S. Monument Record by Jeffrey W. Austin, RLS-1885, dated January 23, 1990, and filed in the office of the Oneida County Register of Deeds. A complete history of the corner can be found on the previous monument record.

December 19, 2022, James D. Rein, PLS No. S-1234, we found and I accepted the Oneida County, capped, 2.4" dia. aluminum, monument. The northeasterly birch is now gone. We further perpetuate it as shown in the plan. See below for one additional bearing tree and updated ties to the recovered references.

(c)(d)(e) PLAN VIEW OF CORNER WITH TIES TO AT LEAST 4 WITNESS MONUMENTS. IF IN DISAGREEMENT WITH PREVIOUSLY ESTABLISHED CORNER, SHOW THE DISTANCE BETWEEN THE TWO CORNERS AND ALSO INDICATE THE TIES TO THE DISPUTED CORNER.



(i) I, JAMES D. REIN, PROFESSIONAL LAND SURVEYOR NO. S-1234 HEREBY CERTIFY THAT THE CORNER LOCATION ON THIS RECORD WAS DETERMINED BY ME OR UNDER MY DIRECTION AND CONTROL AND THAT THIS U.S. PUBLIC LAND SURVEY MONUMENT RECORD IS CORRECT AND COMPLETE TO THE BEST OF MY KNOWLEDGE AND BELIEF.

James D. Rein
SIGNATURE
12/22/22
DATE



INDEX NO. N - 3
3905180020