

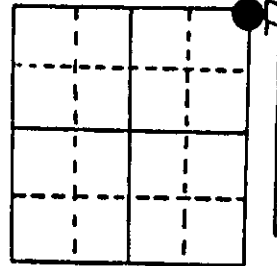
U.S. PUBLIC LAND SURVEY MONUMENT RECORD

Note: This form is intended and designed to fulfill all requirements of Wisconsin Administrative Code, Chapter A-E 7.08 U.S. Public Land Survey Monument Record (3) (a) (b) (c) (d) (e) (f) (g) (h) (i). An additional sheet may be added if necessary to conform with said requirements.

(a) Corner location: Township 39 North
 Range 5 East/West

Town/City/Village Minocqua

County Oneida



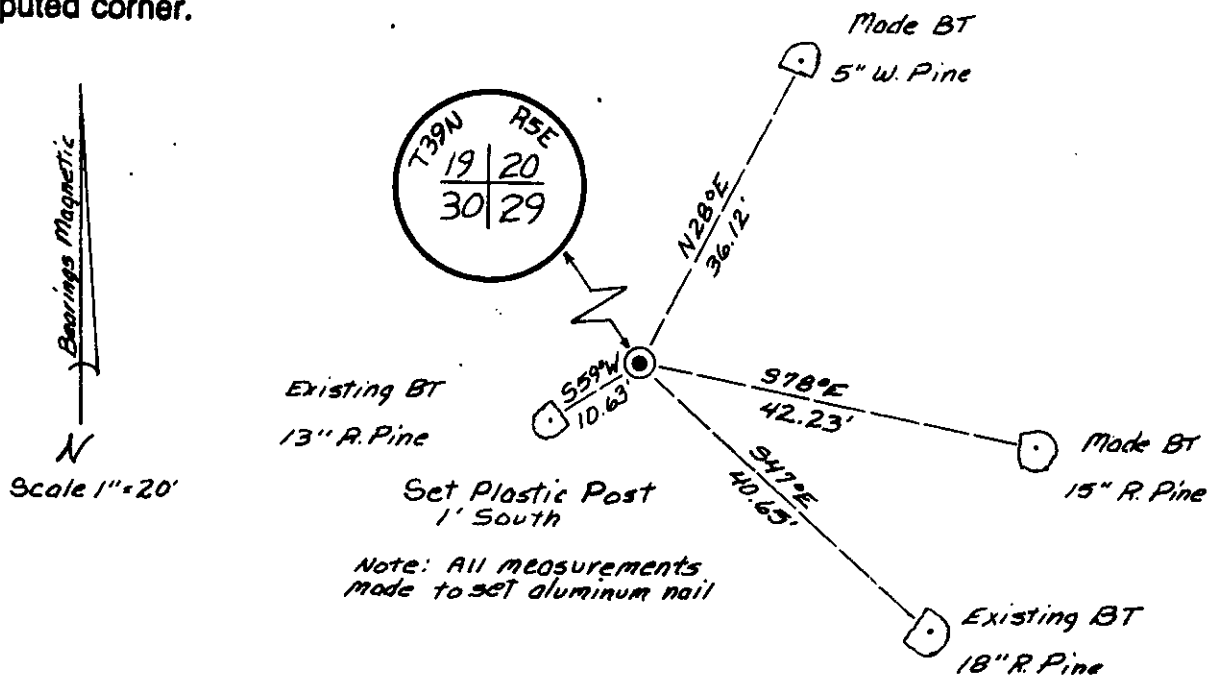
Section 30

(b) (f) (g) (h) Description of monument found at this corner and if it was accepted, state all evidence (material, testimonial, occupational, plats, records, other monuments) used as a basis for accepting. If not accepted or if nothing was found, state evidence used as basis for establishing location. If reestablished through lost corner proportionate methods, indicate all monuments, distances and directions used to establish.

Sept. 1863; Alexander Anderson (Deputy Surveyor) set post for corner to sections 19,20,29&30. Bearing Trees: Aspen 6" N17°E 77Lks, Birch 5" N42°W 100 Lks. E.F. Kowalke in feild book No.4 P. 78 indicates he found a monument at corner location.

April 1991; James D. Rein found a 1 1/2" capped iron pipe 4"X4" scribed wood post. Existing BT's: 13" R.Pine S59°W 10.63' with metal tag, 18" R.Pine S47°E 40.65' with scribing.

(c) (d) (e) Plan view of corner with ties to at least 4 witness monuments. If in disagreement with previously established corner, show the distances between the two corners and also indicate the ties to the disputed corner.



(i) I, James D. Rein RLS S-1234
 (type or print name) certify that the corner location on this record was determined by me or under my direction and control and that this U.S. Public Land Survey Monument Record is correct and complete to the best of my knowledge and belief.

Signature James D. Rein Date 6-6-91



Index No. R-5

3905190000