

U.S. PUBLIC LAND SURVEY MONUMENT RECORD

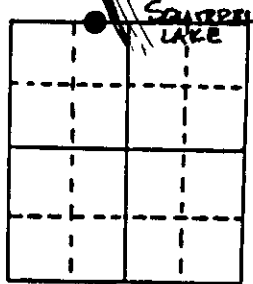
Note: This form is intended and designed to fulfill all requirements of Wisconsin Administrative Code, Chapter A-E 7.08 U.S. Public Land Survey Monument Record (3) (a) (b) (c) (d) (e) (f) (g) (h) (i). An additional sheet may be added if necessary to conform with said requirements.

(a) Corner location: Township 39 North

Range 5 East/West

Town/City/Village Minocqua

County Oneida

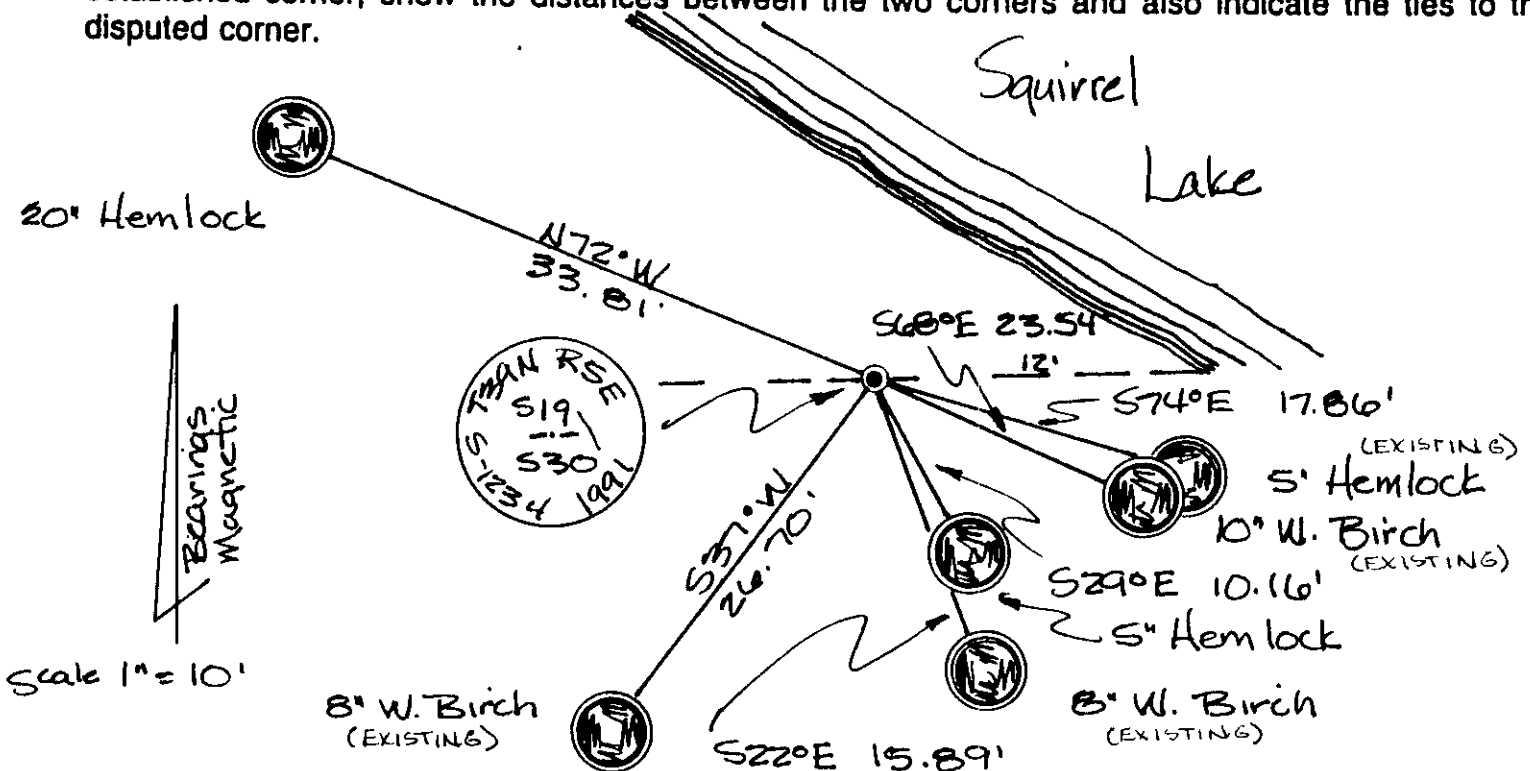


Meander Corner on the north line of Section 30

(b) (f) (g) (h) Description of monument found at this corner and if it was accepted, state all evidence (material, testimonial, occupational, plats, records, other monuments) used as a basis for accepting. If not accepted or if nothing was found, state evidence used as basis for establishing location. If reestablished through lost corner proportionate methods, indicate all monuments, distances and directions used to establish. Indicate type of monument found or set and sign post.

- Sept. 17th, 1863 - Alexander Anderson, Deputy Surveyor, set Meander Corner witnessed by two bearing trees: 5" Maple bearing S7°E, 17 links and a 10" Birch bearing N66°W, 18 links.
- Jan. 1946 - E. F. Kowalke, Surveyor, in his Field Book #3, on page 3 he reestablished the M.C. on the West side of Squirrel Lake by projecting East from the northwest corner of Section 30 through the West 1/8 Corner to the shore of Squirrel Lake.
- Jan. 1987 - Stuart L. Foltz, Registered Land Surveyor, identifies the Meander Corner as being monumented by a 1" dia. iron pipe witnessed by an 8" W. Birch S68°E, 23.52', a 7" W. Birch S21°E, 15.88', a 7" W. Birch S39°W, 26.74' and a 10" W. Birch N68°W, 15.64'.
- April 1991 - James D. Rein, Registered Land Surveyor, recovered a 3/4" iron pipe. Replaced the iron pipe with a capped 2" dia. x 30" long aluminum monument. The existing recovered bearing trees and new bearing trees are as shown in plan view. Set a plastic post 1 foot northwest of the corner monument.

(c) (d) (e) Plan view of corner with ties to at least 4 witness monuments. If in disagreement with previously established corner, show the distances between the two corners and also indicate the ties to the disputed corner.



(i) I, James D. Rein, Registered Land Surveyor No. 1234

(type or print name) certify that the corner location on this record was determined by me or under my direction and control and that this U.S. Public Land Survey Monument Record is correct and complete to the best of my knowledge and belief.

Signature

Date June 6th, 1991



3905190024

Stamp

Index No. R-2-3

MAY 16 2023

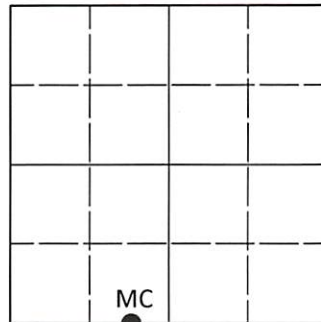
KYLE J. FRANSON
REGISTER OF DEEDS

U.S. PUBLIC LAND SURVEY MONUMENT RECORD

Note: This form is intended and designed to fulfill all requirements of Wisconsin Administrative Code, Chapter A-E 7.08 U.S. Public Land Survey Monument Record (3)(a-i).

(a) CORNER LOCATION
Meander Cor. of Secs. 19 & 30
Township 39 North
Range 5 East of the 4th P.M.
Town of Minocqua
County of Oneida

WISCRS - Oneida County
N: 241,475.48 USft
E: 136,232.06 USft
Datum: NAD 83(2011) ep. 2010.00
GNSS Method: RTN - Offset
GNSS Control: WISCORS VRS



Sec. 19, T. 39 N., R. 5 E.

(b)(f)(g)(h) Description of monument found at this corner and if it was accepted, state all evidence (material, testimonial, occupational, plats, records, other monuments) used as a basis for accepting. If not accepted or if nothing was found, state evidence used as basis for establishing location. If re-established through lost corner proportionate methods, indicate all monuments, distances and directions used to establish. Indicate type of monument and sign post found or set.

This record is a perpetuation of the following land corner document(s):

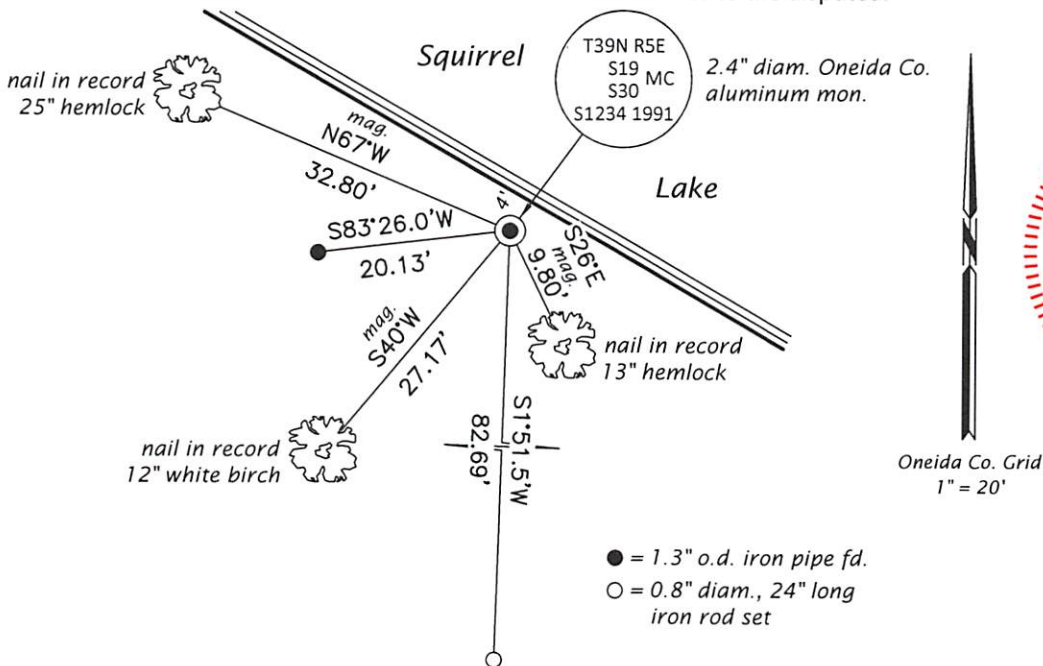
June 6, 1991: USPLS Monument Record by James D. Rein, filed in Oneida County

A complete history of the corner can be found on the previous land corner document(s). I accept the record activity as a true and faithful perpetuation or reestablishment of the original corner location and further perpetuate it as described below.

April 28, 2023: I found and accepted the record monument, a 2.4" diam. aluminum pipe, firmly set, with a 3.3" diam. Oneida Co. aluminum cap projecting 3" above the ground surface. The record bearing trees at S22'E and S68'E are gone. The record 5" hemlock is tipping into the lake. I found or established accessories as indicated below. I found a white vinyl sign post bearing Southwest, 1.2 ft.

The coordinate value shown has been determined by traversing from two or more GNSS offset points satisfying the accuracy requirements defined and qualified in the 2022 Oneida County Fee Schedule for USPLS Corners.

(c)(d)(e) Plan view of corner with ties to at least 4 witness monuments. If in disagreement with previously established corner, show the distances between the two corners and also indicate the ties to the disputed.



REGISTER OF DEEDS OFFICE
ONEIDA COUNTY
FILED

MAY 16 2023

KYLE J. FRANSON
REGISTER OF DEEDS

(i) I, Jeffrey W. Austin, Professional Land Surveyor No. S-1885, hereby certify that the corner location on this record was determined by me or under my direction and control and that this U.S. Public Land Survey Monument Record is correct and complete to the best of my knowledge and belief.

MAY 1, 2023

Signature

Date