

U.S. PUBLIC LAND SURVEY MONUMENT RECORD

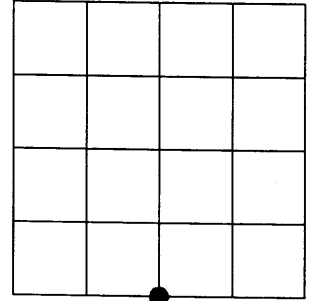
Note: This form is intended and designed to fulfill all requirements of the Wisconsin Administrative Code, Chapter A-E 7.08 U.S. Public Land Monument Record (3)(a)(b)(c)(d)(e)(f)(g)(h)(i). An additional sheet may be added if necessary to conform with said requirements.

(a) CORNER LOCATION:

South quarter corner, Section 20
 Township 39 North
 Range 5 East
 Minocqua Township
 County of Oneida
 State of Wisconsin

COORDINATES

North: 241376.7179 feet
 East: 142119.4312 feet
 Control Station: Oneida County 280
 Latitude: 45° 50' 51.00709" N
 Longitude: 89° 53' 21.35353" W
 Datum: Oneida County Grid (NAD 83 - 1991)
 Method: Real Time Kinetic GPS (Direct)



SECTION 20

(b) HISTORY OF ORIGINAL CORNER ESTABLISHMENT

Original Surveyor: Alex Anderson, set 1/4 section post
 Date of Survey: Commenced - September 15, 1863
 Completed - September 20, 1863

Original B.T.'S: 8" Tamarack; S 58°E, 6 links
 8" Spruce; N 78°E 9 links

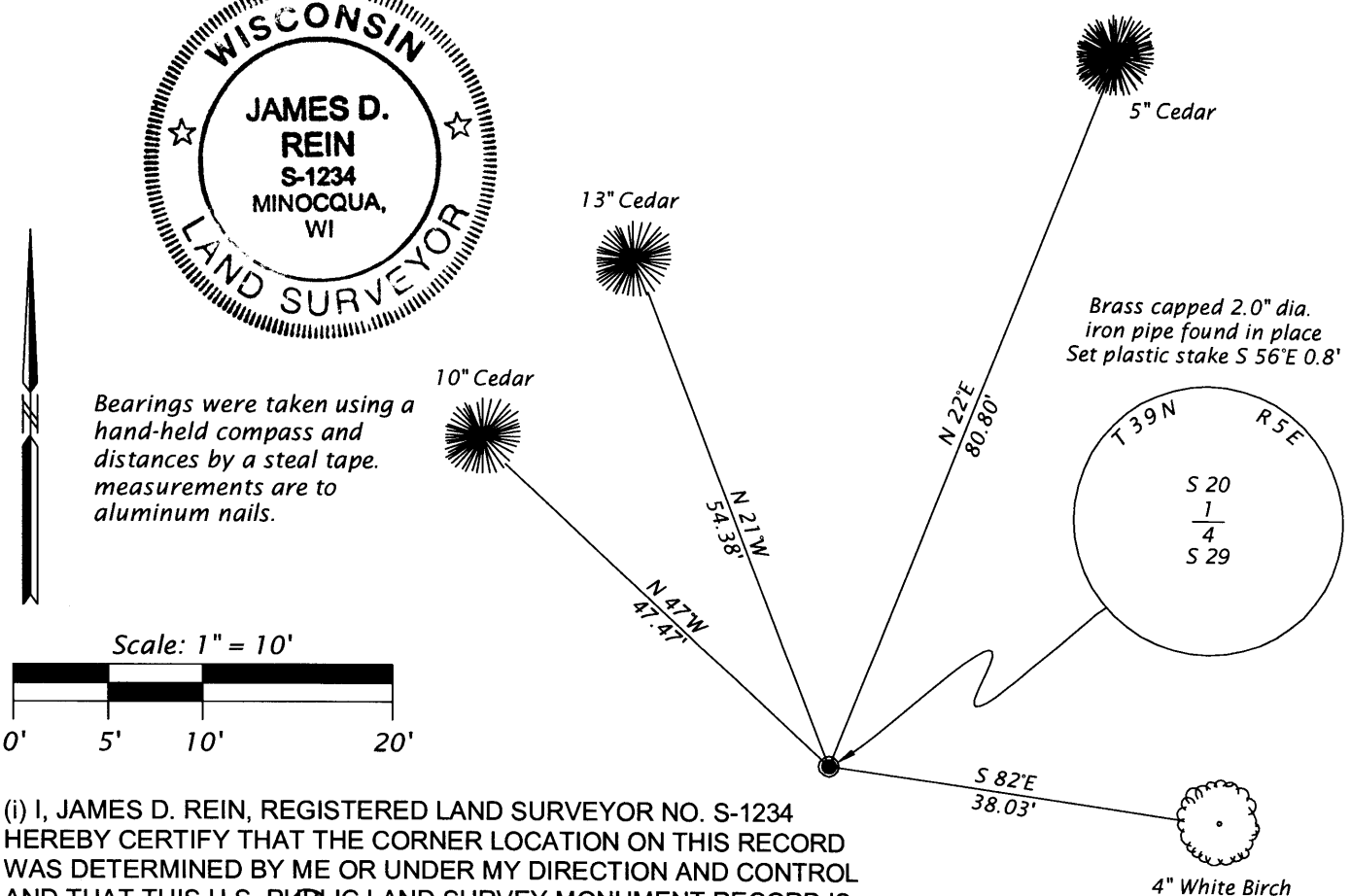
(f)(g)(h) DESCRIPTION OF MONUMENT FOUND AT THIS CORNER AND IF IT WAS ACCEPTED, STATE ALL EVIDENCE (MATERIAL, TESTIMONIAL, OCCUPATIONAL, PLATS, RECORDS, OTHER MONUMENTS) USED AS A BASIS FOR ESTABLISHING LOCATION. IF NOT ACCEPTED OF IF NOTHING WAS FOUND, STATE EVIDENCE USED AS BASIS FOR ESTABLISHING LOCATION. IF REESTABLISHED THROUGH LOST CORNER PROPORTIONATE METHODS, INDICATE ALL MONUMENTS, DISTANCES AND DIRECTIONS USED TO ESTABLISH. INDICATE TYPE OF MONUMENT AND SIGN POST FOUND OR SET.

December - January / 1957-1958 - William Stuth and Ken Voyt perform a survey and prepare a map (NEPCO) showing a symbol at the south quarter corner of Section 20. No BT's or reference ties shown.

May 16th, 1994 - Todd Loftus recovers a capped iron pipe at the south quarter corner of Section 20. No BT's or reference ties shown.

February 2nd, 2005 - I, James D. Rein, recovered a brass capped 2.0" dia. iron pipe tipped over. We set the pipe plumb. This corner position is harmonious with Harry C. Halls plat of McKenna's Subdivision (November, 1927) and Loftus's survey, filed as B2907. Set a plastic stake S 56°E, 0.8 feet. Made (4) new BT's as shown in diagram below.

(c)(d)(e) PLAN VIEW OF CORNER WITH TIES TO AT LEAST 4 WITNESS MONUMENTS. IF IN DISAGREEMENT WITH PREVIOUSLY ESTABLISHED CORNER, SHOW THE DISTANCE BETWEEN THE TWO CORNERS AND ALSO INDICATE THE TIES TO THE DISPUTED CORNER.



(i) I, JAMES D. REIN, REGISTERED LAND SURVEYOR NO. S-1234 HEREBY CERTIFY THAT THE CORNER LOCATION ON THIS RECORD WAS DETERMINED BY ME OR UNDER MY DIRECTION AND CONTROL AND THAT THIS U.S. PUBLIC LAND SURVEY MONUMENT RECORD IS CORRECT AND COMPLETE TO THE BEST OF MY KNOWLEDGE AND BELIEF.

SIGNATURE DATE Aug. 16, 2005

INDEX NO. R7

3905200020
~~4304362400~~