

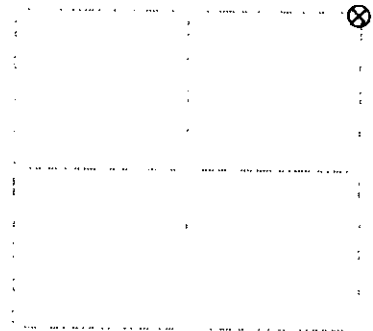
U. S. PUBLIC LAND SURVEY MONUMENT RECORD

Notes: This form is intended and designed to fulfill all requirements of Wisconsin Administrative Code, Chapter A-E 7.09 U.S. Public Land Survey Monument Record (3) as amended, effective 1/1/90. An additional sheet may be added if necessary to conform with said requirements.

(a) Corner location: Township 39 North
Range 5 East

Town of Minocqua

Oneida County, Wisconsin



Section 27

Revising the Description of monument found at this corner and if it was accepted, state all evidence material, testimonial, occupational, plats, records, other monuments used as a basis for accepting. If not accepted or if nothing was found, state evidence used as basis for establishing location. If reestablished through lost corner proportionate methods, indicate all monuments, distances and directions used to establish. Indicate type of monument found or set and sign post.

September, 1863: Alexander Anderson, US deputy surveyor notes the following: 80.40 set post for corner to secs 22, 23, 26 & 27; aspen 2 N66W, 65.43; aspen 3 N26E, 114.16.

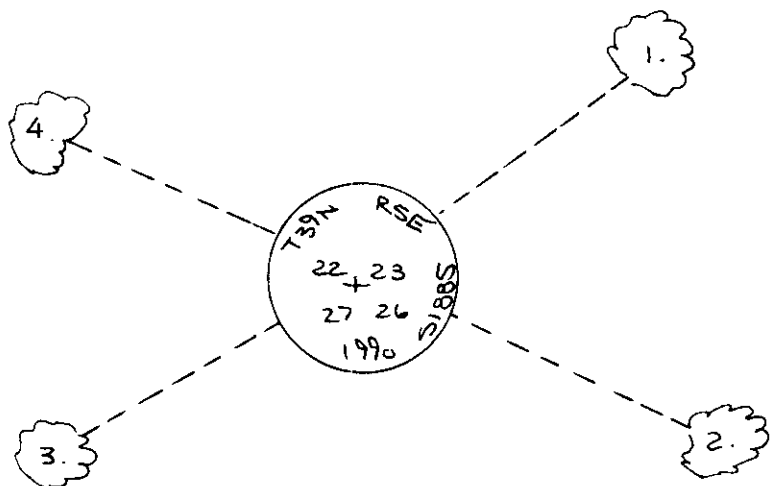
August 1, 1935: 200 page 4, page 99 notes the following: Orig. NE cor. as identified page 75: set anchored piece of narrow gauge RR rail in place of post; set post alongside, white woodpe sp. 14" S77-3 NW, 102; w.pine 12" N54-1.4W, 3.193.

November 5, 1990: I found and accepted a 14" long piece of narrow gauge railroad track. I replaced with aluminum post, 10" long, 2 1/2" dia, 14" in the ground with aluminum cap marked as shown below. The monument is not plumb, but the center point on the cap is correct. I buried a deep iron wagon at the base of post. I found the following witnesses: old scribed pine stump cor. S28W, 54.75 feet; old scribed pine stump cor. N45W, 201.5 feet; centerline of woods road bears east, 10 feet. I established the following witnesses: set nail in w.pine 14" N54E, 38.33 feet; set nail in w.pine 16" S65E, 40.60 feet; set nail in w.pine 18" S60W, 36.79 feet; set post in w.pine 18" N66W, 49.23 feet; set plastic sign post NW, 1.3 feet. Note - the northwest old bearing tree does not agree bearing or distance. I believe this to be the result of a transposed bearing and distance or mis-recorded distance.

to show plan view of corner with ties to at least four witness monuments. If in disagreement with previously established corner, show the distances between the two corners and also indicate the ties to the disputed corner.

1. nail in w.pine 14" N54E, 38.33 feet.
2. nail in w.pine 16" S65E, 40.60 feet.
3. nail in w.pine 18" S60W, 36.79 feet.
4. nail in w.pine 18" N66W, 49.23 feet.

(not to scale)



I, Jeffrey W. Austin, Registered Land Surveyor 5-1885 certify that the corner location at this section was determined by me or under my direction and control and that this U.S. Public Land Survey Monument Record is correct and complete to the best of my knowledge and belief.

Jeffrey W. Austin
November 30, 1990



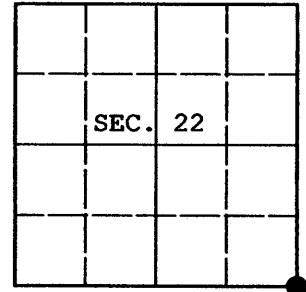
Index no. R-17

3905220000

U.S. PUBLIC LAND SURVEY MONUMENT RECORD

Note: This form is intended and designed to fulfill all requirements of Wisconsin Administrative Code, Chapter A-E 7.08 U.S. Public Land Survey Monument Record (3) (a) (b) (c) (d) (e) (f) (g) (h) (i). An additional sheet may be added if necessary to conform with said requirements.

(a) CORNER LOCATION: Plane Coordinates
 Cor. of Secs. 22, 23, 26 & 27 X:
 Township 39 North Y:
 Range 5 East of the 4th P.M. Datum:
 Town of Minocqua County of Oneida



(b) HISTORY OF ORIGINAL CORNER ESTABLISHMENT

Original Surveyor: Alexander Anderson Original Accessories:
 Date of Survey: Commenced Sep. 15, 1863 Aspen 8" N.58°W., 65 lks.
 Completed Sep. 20, 1863 Aspen 8" N.26°E., 114 lks.

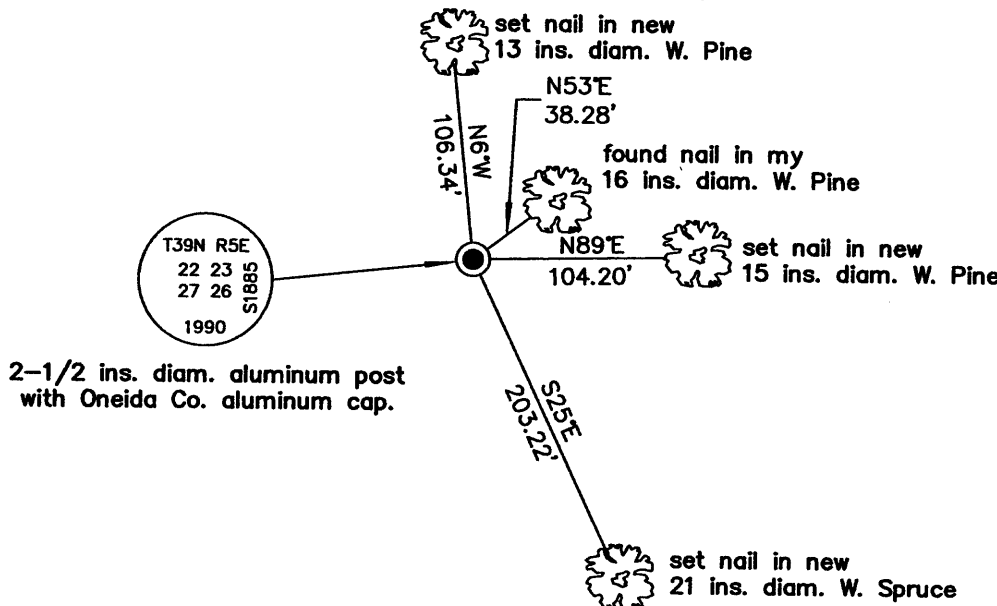
(b) (f) (g) (h) Description of monument found at this corner and if it was accepted, state all evidence (material, testimonial, occupational, plats, records, other monuments) used as a basis for accepting. If not accepted or if nothing was found, state evidence used as basis for establishing location. If re-established through lost corner proportionate methods, indicate all monuments, distances and directions used to establish. Indicate type of monument and sign post found or set.

NOTE: This is a perpetuation of a previous USPLS Monument Record by Jeffrey W. Austin, RLS dated November 30, 1990 and filed in the office of the Oneida County Register of Deeds. A complete history of the corner can be found on the previous monument record. I accept the previous location as a true and faithful perpetuation or reestablishment of the original corner location and further perpetuate it as follows.

April 23, 2008: I found and accepted my previous monument, an aluminum post, 2-1/2 ins. diam. with Oneida Co. aluminum cap projecting 6 ins. above the ground surface. The monument leans west as noted in the previous description. All of my pine except the Northeast tree have been recently cut. I established accessories as shown below and found a white plastic sign post bearing West, 1 ft. dist.

REGISTER OF DEEDS OFFICE
 ONEIDA COUNTY, WIS.
FILED
 DEC 18 2008
 At _____ O'Clock _____ M
THOMAS H. LEIGHTON
 REGISTER OF DEEDS

(c) (d) (e) Plan view of corner with ties to at least 4 witness monuments. If in disagreement with previously established corner, show the distances between the two corners and also indicate the ties to the disputed.



(i) I, Jeffrey W. Austin, Registered Land Surveyor No. S-1885, hereby certify upon honor that the corner location on this record was determined by me or under my direction and control and that this U.S. Public Land Survey Monument Record is correct and complete to the best of my knowledge and belief.

Signature _____ Date DEC. 12, 2008



INDEX NO. R-17 (3905220000)