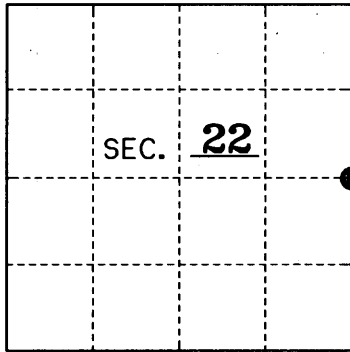


# U.S. PUBLIC LAND SURVEY MONUMENT RECORD

Note: This form is intended and designed to fulfill all requirements of Wisconsin Administrative Code, Chapter A-E 7.08 U.S. Public Land Monument Record (3)(a)(b)(c)(d)(e)(f)(g)(h)(i). An additional sheet may be added if necessary to conform with said requirements. Deeds Square

(a) CORNER LOCATION: \_\_\_\_\_  
 East 1/4 Corner of Section 22  
 Township 39 North, Range 5 East  
 Township/City Minocqua  
 County of ONEIDA



REGISTER OF DEEDS OFFICE  
ONEIDA COUNTY, WIS.

F

JAN 10 2011

At        O'Clock        M  
**THOMAS H. LEIGHTON**  
 REGISTER OF DEEDS

(b) HISTORY OF ORIGINAL ESTABLISHMENT  
 Original Surveyor: Alex Anderson  
 Date of Survey: May 1865  
 Original B.T.'s:

6" Spruce N 6-1/2°E 16 Lks.  
 5" Spruce N 80°W 7 Lks.

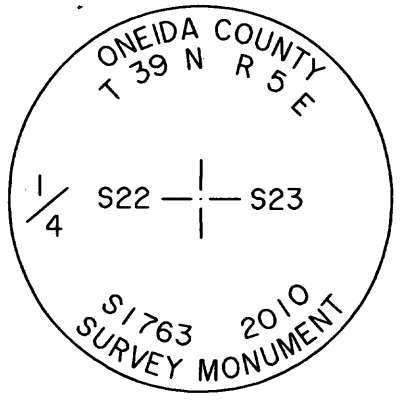
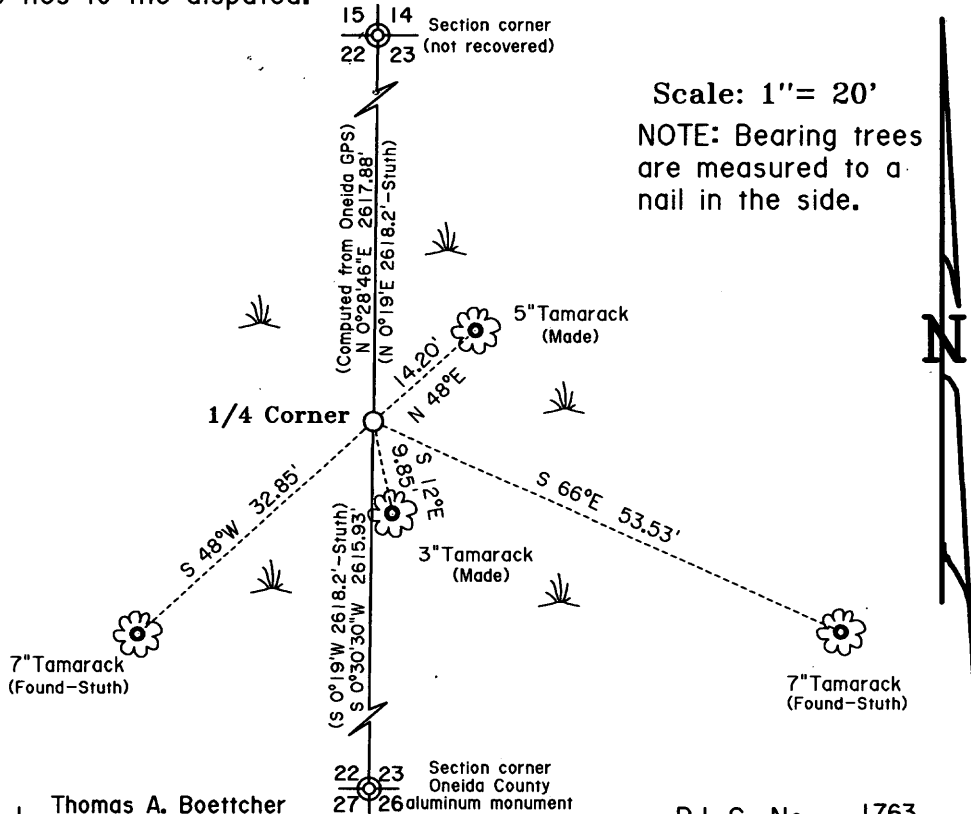
County or State Plane Coordinates  
 Northing 243683.09'  
 Easting 155322.02'  
 Datum Base Oneida County Grid

(b)(f)(g)(h) Description of monument found at this corner and if it was accepted, state all evidence (material, testimonial, occupational, plats, records, other monuments) used as a basis for accepting. If not accepted or if nothing was found, state evidence used as basis for establishing location. If reestablished through lost corner proportionate methods, indicate all monuments, distances and directions used to establish. Indicate type of monument and sign post found or set.

1966-1967: W.H. Stuth of Owens-Illinois does a joint survey for O.I. and NEPCO and subdivides Sections 22 & 23. He apparently set an iron pipe by single proportion between the Section corners to the North and South for the East 1/4 corner of Section 22. He made the following BT's: 4" Tamarack S 75°E 53.5' and 4" Tamarack S 44°W 33.2'.

June 2010: I, Thomas A. Boettcher, found a 1-3/4" iron pipe 8" high in the marsh Northeast of Bellmore Lake set by Stuth and I found both of his Tamarack BT's OK. We tied the monument in and found that it is about one foot South of the true half way position based on our measurement to the SE Section corner and Oneida County GPS coordinates on the NE Section corner. This pipe has been used to subdivide both Sections 22 and 23 and set the Center 1/4 corner in each Section. Many surveys in Section 23 have relied on the Center 1/4 corner of Section 23 set from this 1/4 corner. I accepted the iron pipe as the 1/4 corner position and set an Oneida County 2-1/2" x 30" long aluminum capped monument over the iron pipe stamped as shown below. I measured in Stuth's BT's and made two new BT's as shown below. I set a plastic guard post 8" North of the corner.

(c)(d)(e) Plan view of the corner with ties to at least 4 witness monuments. If in disagreement with previously established corner, show the distances between the two corners and also indicate the ties to the disputed.



WISCONSIN

★ THOMAS A. BOETTCHER ★

S-1763

EAGLE RIVER WIS.

LAND SURVEYOR

(i) I, Thomas A. Boettcher R.L.S. No. 1763

hereby certify that the corner location on this record was determined by me or under my direction and control and that this U.S. Public Land Survey Monument Record is correct and complete to the best of my knowledge and belief.

Signature  Date December 14, 2010

Index No. 3905222000