

U.S. PUBLIC LAND SURVEY MONUMENT LOCATION RECORD

Recorders Data

CORNER: West 1/4 SECTION: 24 TOWNSHIP 39 NORTH RANGE 5 EAST WEST

FOR M.C. CORNER INDICATE: NAME OF WATERWAY N/A SECTION LINE N/A

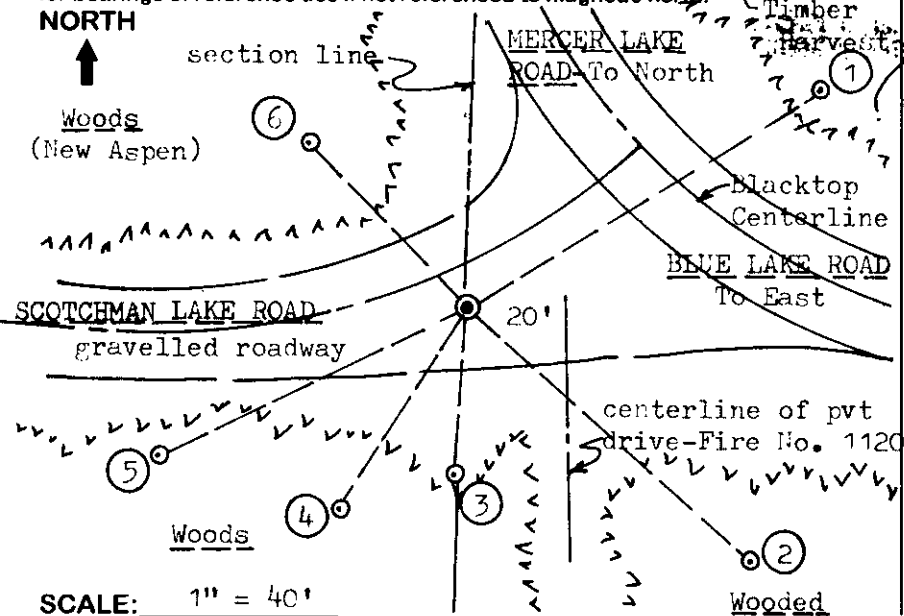
(CITY)(VILLAGE)(TOWN) OF: Minocqua COUNTY OF: Oneida

Description of monument found or placed and all other evidence used as a basis for monument location; including all monuments and related measurements required if the corner location is reestablished by lost corner proportionate methods. Also indicate name of original surveyor, survey date, corner monument set and established bearing trees, witness or reference monuments with ties from available records.

Found and accepted an old badly rusted 1" dia. iron pipe monument with uncapped top 4" or so below existing roadway surface at this corner location; the upper 8" of the iron pipe was bent 2" +/- off center to the West, so I removed the old 28" long iron pipe and reset a new 1" dia. by 24" long iron pipe monument in the plumb hole left by the bottom 20" of the old iron pipe monument, with top 8" below the roadway surface. In 1863, Anderson/GLO set a wood post as the corner and marked OBTs, a 12" Aspen S07°W 24 lks and a 10" Pw S56°E 22 lks, which are all now obliterated. In 1934, Hall/CCC accepted an old wood post at the corner and noted new BTs, a 9" Aspen S50°E 135.5', now gone, and a 10" Py S25½°W 131.1' also now gone. In 1963, per NEPCO/Owens-Illinois map by Stuth, an iron pipe is noted at this corner by map legend. A January 1979 typed listing of PLSS corners from Oneida County Survey records, presently of unknown source, indicates that an iron pipe was found in place at this corner and also noted new BTs, a RR spike in a 14" Pr N55°W 118.93', now a low sawed stump 17" Pr N58°W 119' +/-, and a 22" Pr with open face blaze painted black S35°W at 140.98', now a 20" Pr with 14" wide by 40" high face blaze above root crown painted black. This corner recovery was completed May 12, 1998; there were no witnesses other than vehicular traffic.

Note: Field conditions were considered unsuitable for placement of reference monuments on a right line thru the corner monument, so I elected to reference the corner location with two(2) additional witnesses; with the approval of County Surveyor Romportl.

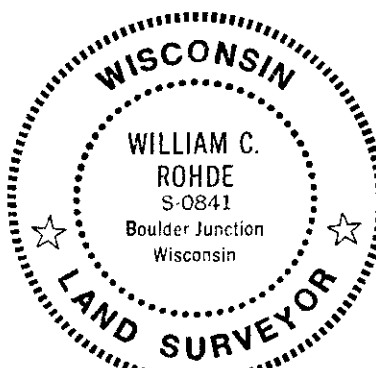
Plan view map of monument location with bearing and distance ties to a minimum of four(4) described witness or reference monuments of concrete, natural stone, iron, live bearing trees or equivalent material. If applicable, also show a minimum of two(2) bearing and distance ties to any other monument found and not accepted; including the bearing and distance from the accepted monument. Indicate the basis for bearings of reference ties if not referenced to magnetic north.



- WITNESS MONUMENT TIES:**
- 1 New BT 5½" Balsam N58°E 86.85'.
 - 2 New BT 11" Balsam S48°E 79.21'.
 - 3 1" dia. iron pipe found with top 2" above grade S05°W 35.21'.
 - 4 New BT 10" Mr S33°W 49.58'.
 - 5 New BT 8" Balsam S65°W 71.36'.
 - 6 New BT 8" Mr N44°W 48.01'.

Note: I set a standard white poly 'T' marker post 16' South of corner on top of roadway bank and left old iron pipe monument and old spike found flat on grade along South side of post.

SCALE: 1" = 40'
 Unless otherwise indicated, all bearing tree ties are to a .25" dia. by 2.5" long PK nail with a 1.25" dia. steel washer driven into unblazed right face and a .25" dia. by 2.5" long PK nail with a 2" dia. steel washer stamped 'BT' is also driven into unblazed face of bearing tree at DBH; the basis for measured bearings is magnetic to nearest degree and all tie distances are horizontal measure to nearest 1/100th feet.



LAND SURVEYOR CERTIFICATION:
 I, William C. Rohde, hereby certify that I am a duly licensed Professional Land Surveyor in Wisconsin, that this USPLS monument location was determined by me or under my direction and control, and that this U.S. Public Land Survey Monument Location Record is true and correct to the best of my knowledge and belief.

William C. Rohde Date: 5-16-98
 Signature

	24		

INDEX NO.

RLS SEAL

SHEET NO. 1 OF 1

This form is intended to fulfill requirements of Chapter A-E 7.08 (3)(a)(b)(c)(d)(e)(f)(g)(h)(i) U.S. Public Land Survey Monument Location Record, Wisconsin Administrative Code. Use reverse side for geodetic location data and/or continuation purposes.

SECTION LOCATION MAP

INDEX NO. P 21
390523 2000