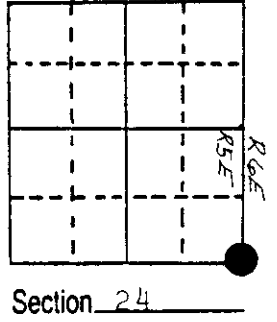
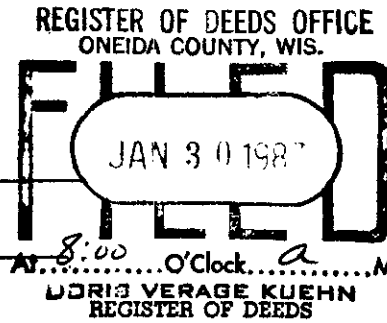


# U.S. PUBLIC LAND SURVEY MONUMENT RECORD

Note: This form is intended and designed to fulfill all requirements of Wisconsin Administrative Code, Chapter A-E 5.02, U.S. Public Land Survey Monument Record (3) (a) (b) (c) (d) (e) (f) (g) (h) (i). An additional sheet may be added if necessary to conform with said requirements.

(a) Corner location: Township 39 North  
 Range 5 & 6 East/West  
 Town/City/Village Minocqua  
 County Oneida



(b) (f) (g) (h) Description of monument found at this corner and if it was accepted, state all evidence (material, testimonial, occupational, plats, records, other monuments) used as a basis for accepting. If not accepted or if nothing was found, state evidence used as basis for establishing location. If reestablished through lost corner proportionate methods, indicate all monuments, distances and directions used to establish.

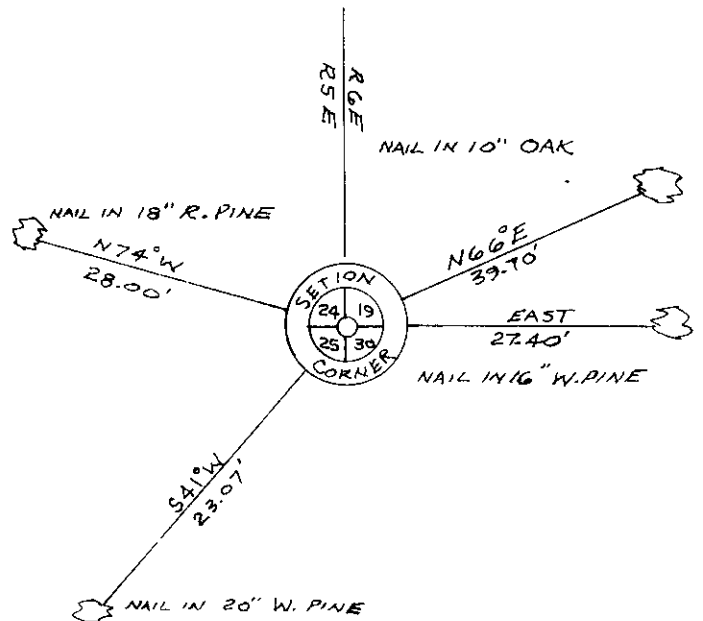
Found 6" X 6" concrete monument  
 Nail in White Pine 20" S41°W 23.07 feet

(c) (d) (e) Plan view of corner with ties to at least 4 witness monuments. If in disagreement with previously established corner, show the distances between the two corners and also indicate the ties to the disputed corner.

Replaced 6" X 6" concrete monument with Oneida County 2" diameter aluminum pipe 30" long with 3" diameter aluminum tablet stamped to identify corner.

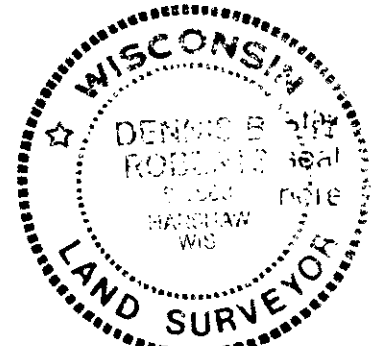
Set nail in:

Red Pine	18"	N74°W	28.00 feet
Oak	10"	N66°E	39.70 feet
White Pine	16"	East	27.40 feet



(i) I, Dennis E. Roberts  
 (type or print name) certify that the corner location on this record was determined by me or under my direction and control and that this U.S. Public Land Survey Monument Record is correct and complete to the best of my knowledge and belief.

Dennis E. Roberts  
 Signature Date January 27, 1987



Index No. R-25

3905240000