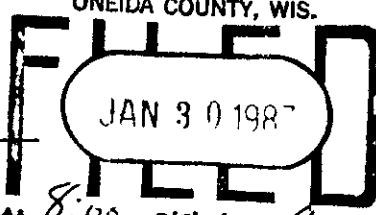


U.S. PUBLIC LAND SURVEY MONUMENT RECORD

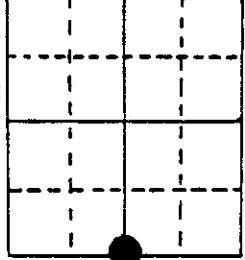
Note: This form is intended and designed to fulfill all requirements of Wisconsin Administrative Code, Chapter A-E 5.02, U.S. Public Land Survey Monument Record (3) (a) (b) (c) (d) (e) (f) (g) (h) (i). An additional sheet may be added if necessary to conform with said requirements.

(a) Corner location: Township 39 North
 Range 5 East/West
 Town/City/Village Minocqua
 County Oneida

REGISTER OF DEEDS OFFICE
ONEIDA COUNTY, WIS.



At 8:00 O'Clock AM
DORIS VERAGE KUEHN
REGISTER OF DEEDS



Section 24

(b) (f) (g) (h) Description of monument found at this corner and if it was accepted, state all evidence (material, testimonial, occupational, plats, records, other monuments) used as a basis for accepting. If not accepted or if nothing was found, state evidence used as basis for establishing location. If reestablished through lost corner proportionate methods, indicate all monuments, distances and directions used to establish.

Found 6" X 6" square concrete monument
 Set nail in ET found

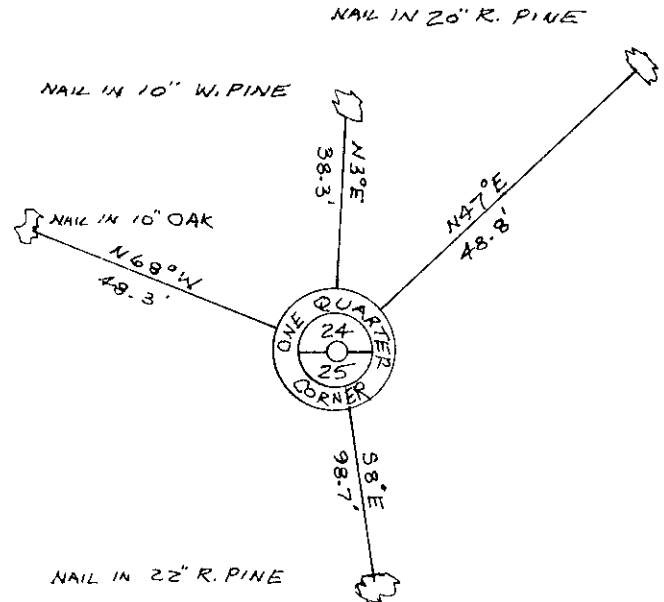
Red Pine	20"	N47°E	48.8 feet
Red Pine	22"	S 8°E	98.7 feet

(c) (d) (e) Plan view of corner with ties to at least 4 witness monuments. If in disagreement with previously established corner, show the distances between the two corners and also indicate the ties to the disputed corner.

Replaced 6" X 6" concrete monument with Oneida County 2" diameter aluminum pipe 30" long with 3" diameter aluminum tablet stamped to identify corner.

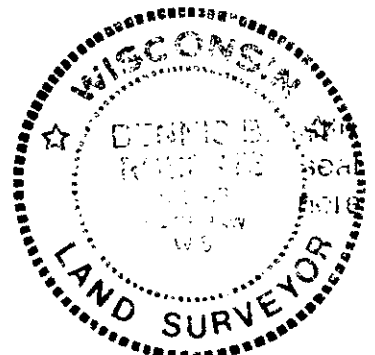
Set nail in:

White Pine	10"	N3°E	38.3 feet
Oak	(clump) 10"	N68°W	48.3 feet
Steel post		N35°W	1.0 feet



(i) I, Dennis E. Roberts
 (type or print name) certify that the corner location on this record was determined by me or under my direction and control and that this U.S. Public Land Survey Monument Record is correct and complete to the best of my knowledge and belief.

Dennis E. Roberts January 27, 1987
 Signature Date



Index No. R-23

3905240020