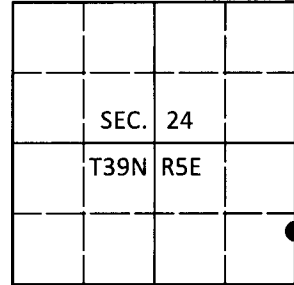


U.S. PUBLIC LAND SURVEY MONUMENT RECORD

Note: This form is intended and designed to fulfill all requirements of Wisconsin Administrative Code, Chapter A-E 7.08 U.S. Public Land Survey Monument Record (3)(a-i).

(a) CORNER LOCATION
 Meander Cor. of Secs. 19 & 24
 Township 39 North
 Range 5 & 6 East of the 4th P.M.
 Town of Minocqua
 County of Oneida

WISCORS - Oneida County
 N: 242,107.14 USft
 E: 165,790.17 USft
 Datum: NAD 83(2011)
 GNSS Method: RTN - Offset
 GNSS Control: WISCORS VRS



(b) HISTORY OF ORIGINAL CORNER ESTABLISHMENT

Original Surveyor: Alfred Millard

Original Accessories:

Date of Survey Commenced: Sep 1860
 Completed: Sep 1860

W.Pine 8" S82°E, 20 lks.
 Tamarack 10" N55°W, 89 lks.

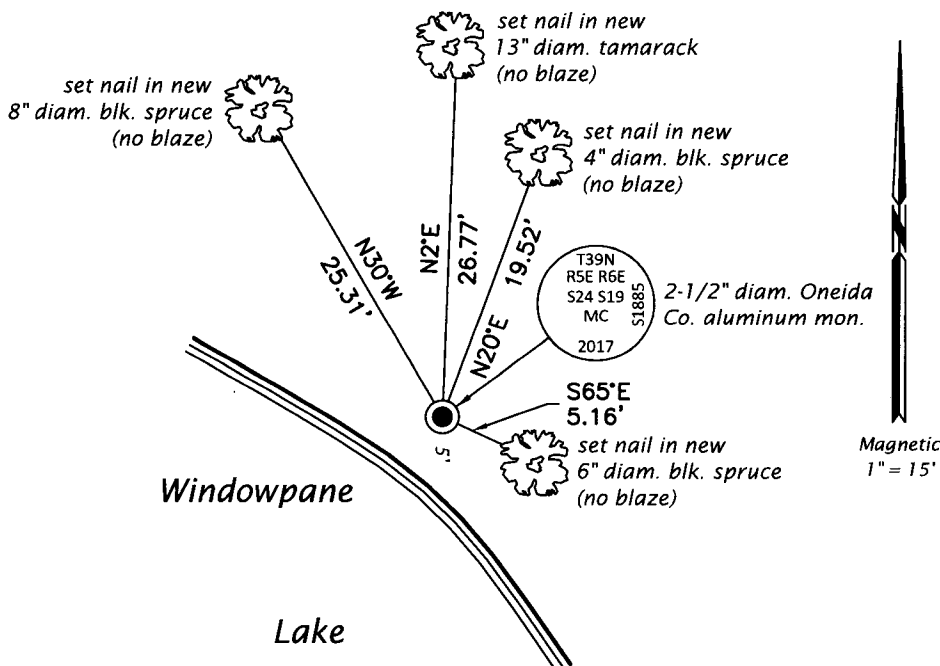
(b)(f)(g)(h) Description of monument found at this corner and if it was accepted, state all evidence (material, testimonial, occupational, plats, records, other monuments) used as a basis for accepting. If not accepted or if nothing was found, state evidence used as basis for establishing location. If re-established through lost corner proportionate methods, indicate all monuments, distances and directions used to establish. Indicate type of monument and sign post found or set.

20 Jan 1987: OCS Map No. B-1601 by Dennis B. Roberts, RLS. Corner marked by a 2" iron pipe found in place.

18 Oct 2017: I found and accepted the record monument, a 2-1/2" diam., 30" long iron pipe. A scribed pine snag, 11" diam. bears N13°W, 4.0 ft. In place of the pipe, I set a 2-1/2" diam., 60" long aluminum pipe with a 3-1/4" diam. Oneida Co. aluminum cap projecting 6" above the bog surface. I established accessories as shown below and set a white vinyl sign post bearing South, 0.8 ft. dist.

The coordinate value shown has been verified by at least one of the following methods: 1) comparison to a previously GPS determined published value; 2) the value is the average of two or more GPS observations at a markedly different time; 3) one or more distances were measured back to the GPS observed corner from temporary GPS observed offset locations.

(c)(d)(e) Plan view of corner with ties to at least 4 witness monuments. If in disagreement with previously established corner, show the distances between the two corners and also indicate the ties to the disputed.

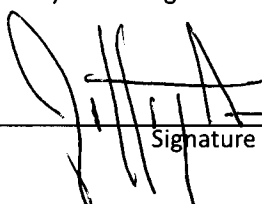


REGISTER OF DEEDS OFFICE
 ONEIDA COUNTY
 FILED

JAN 02 2018

KYLE J. FRANSON
 REGISTER OF DEEDS

(i) I, Jeffrey W. Austin, Professional Land Surveyor No. S-1885, hereby certify that the corner location on this record was determined by me or under my direction and control and that this U.S. Public Land Survey Monument Record is correct and complete to the best of my knowledge and belief.

 _____
 Signature
 26 DEC 2017
 Date