

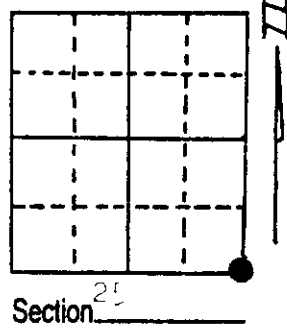
U.S. PUBLIC LAND SURVEY MONUMENT RECORD

Note: This form is intended and designed to fulfill all requirements of Wisconsin Administrative Code, Chapter A-E 5.02, U.S. Public Land Survey Monument Record (3) (a) (b) (c) (d) (e) (f) (g) (h) (i). An additional sheet may be added if necessary to conform with said requirements.

(a) Corner location: Township 39 North
 Range 5 East/West

Town/City/Village Lincoln

County Oneida

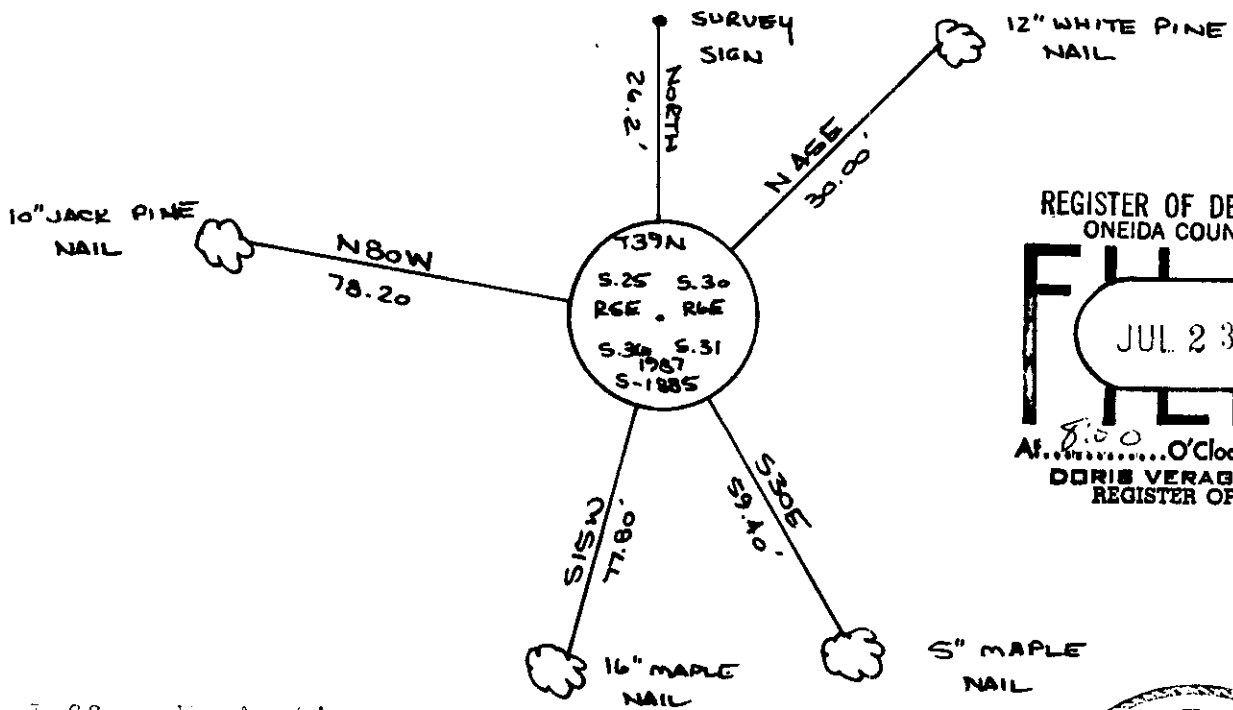


(b) (f) (g) (h) Description of monument found at this corner and if it was accepted, state all evidence (material, testimonial, occupational, plats, records, other monuments) used as a basis for accepting. If not accepted or if nothing was found, state evidence used as basis for establishing location. If reestablished through lost corner proportionate methods, indicate all monuments, distances and directions used to establish.

The original Government Survey was performed by Alfred Millerd in 1860.
 Tamarack 4" 25°E 50 lks. (Wood Post Set)
 Tamarack 5" 165°W 72 lks.

Found Railroad Spike at intersection of Blue Lake Road and Camp Line Road. Checked area with metal locator. Found nothing else. Accepted spike and replaced with a Berntsen Aluminum Breakaway monument set 2' below pavement.

(c) (d) (e) Plan view of corner with ties to at least 4 witness monuments. If in disagreement with previously established corner, show the distances between the two corners and also indicate the ties to the disputed corner.



REGISTER OF DEEDS OFFICE
 ONEIDA COUNTY, WIS.
FILED
 JUL 23 1987
 At 8:00 O'clock
 DORIS VERAGE KUEHN
 REGISTER OF DEEDS

WISCONSIN
 Jeffrey W. Austin
 S-1885
 Oneida, WIS.
 LAND SURVEYOR

Index No. A-25

(i) I, Jeffrey W. Austin
 (type or print name) certify that the corner location on this record was determined by me or under my direction and control and that this U.S. Public Land Survey Monument Record is correct and complete to the best of my knowledge and belief.

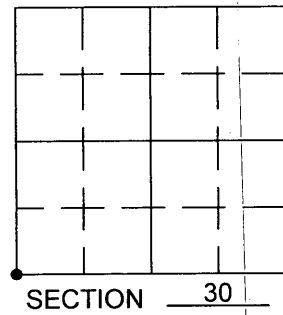
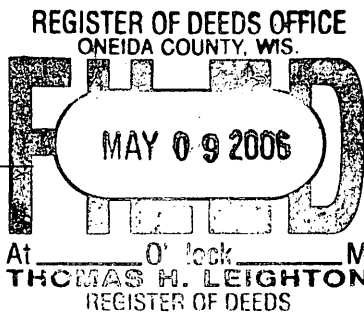
Jeffrey W. Austin Signature July 17, 1987 Date

3905250000

U.S PUBLIC LAND SURVEY MONUMENT RECORD

Note: This form is intended and designed to fulfill all requirements of Wisconsin Administrative Code, Chapter A-E 7.08 U.S. Public Land Survey Monument Record (3) (a) (b) (c) (d) (e) (f) (g) (h) (i). An additional sheet may be added if necessary to conform to said requirements.

(a) Corner location: Township 39 North
 Range 6 East/West
 Town/City/Village MINOCQUA
 County ONEIDA



(b) (f) (g) (h) Description of monument found at this corner and if it was accepted, state all evidence (material, testimonial, occupational, plats, records, other monuments) used as a basis for accepting. If not accepted or if nothing was found, state evidence used as basis for establishing locations. If reestablished through lost corner proportionate methods, indicate all monuments, distances and directions used to establish. Indicate type of monument found or set and sign post.

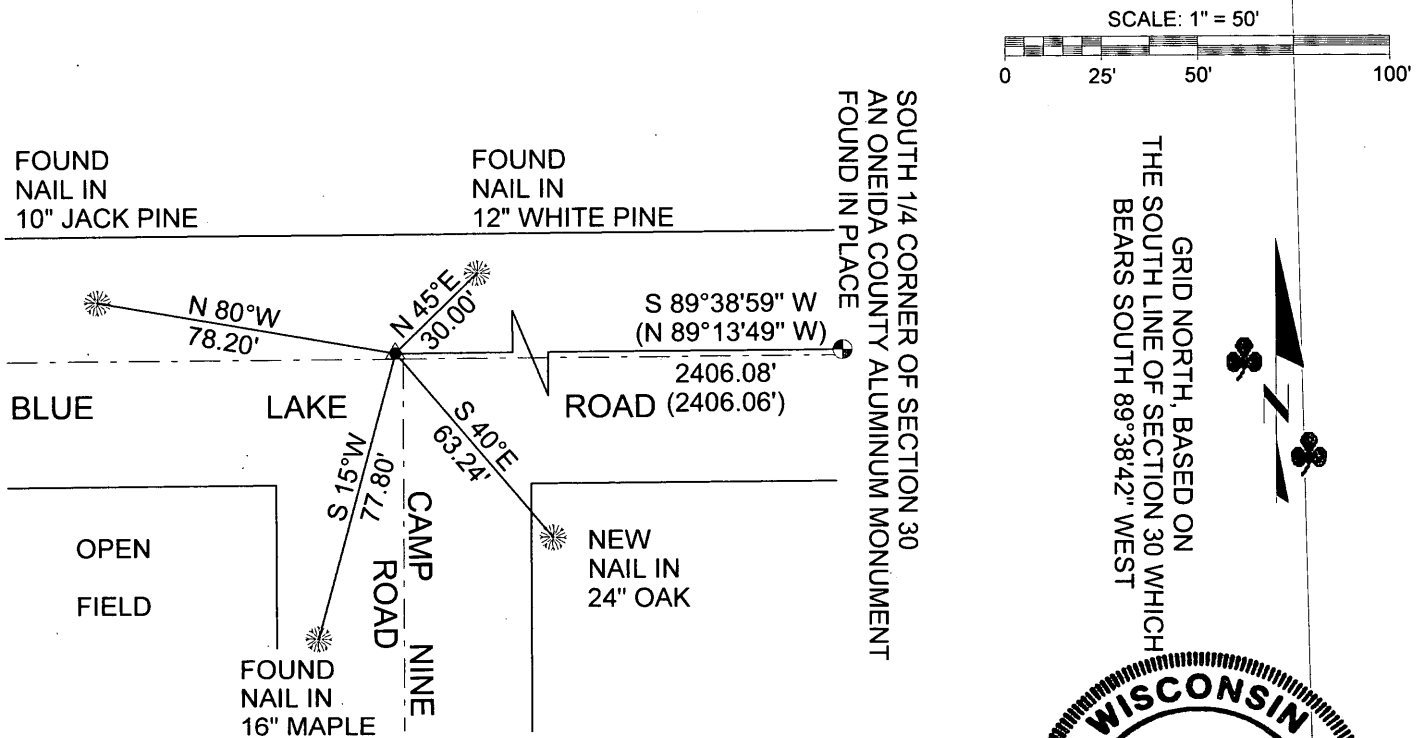
September 23rd, 1860, Alfred Millard, Set post corner of Section 25,36,30,31 with Bt's: Spruce Pine 8" N 57° E, 31 Links
 Y Pine 10" N 40° W, 23 Links
 Y Pine 12" S 28° E, 13 Links
 Spruce 10" S 40° W, 36 Links

July, 1987, Jeffery W. Austin, found a railroad spike at the intersection of Blue Lake Road and Camp Nine Road. He accepted the railroad spike and replaced it with a Bernsten Aluminum Breakaway Monument set 2" below pavement and established new Bt's.

December, 1996, Stephen J. Favorite, found an oneida county aluminum monument for corner and used it to establish the position of the South 1/4 Corner of Section 30 by us of single proportionate measurement see U.S.P.L.S. Monument Record for the South 1/4 of Section 30 recorded at the Oneida County Land Information Office.

June, 2005, I found 3 of Austin's Bts and set a Survey Marker Nail over a magnetic dip 1.5' West of the Centerline of Camp Nine Road and 2.0' North of the Centerline of Blue Lake Road. Bt's verified this position as shown below.

(c) (d) (e) Plan view of corner with ties to at least 4 witness monuments. If in disagreement with previously established corner, show the distances between the two corners and also indicate the ties to the disputed corner.



(i) I, Benton A. McMullen certify that the corner location on this record was determined by me or under my direction and control and that this U.S. Public Land Survey Monument Record is correct and complete to the best of my knowledge and belief.

Benton A. McMullen 5/5/06
 Signature Date



3905250000

V-1