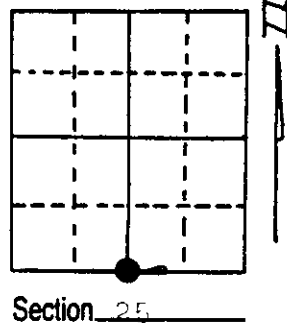


U.S. PUBLIC LAND SURVEY MONUMENT RECORD

Note: This form is intended and designed to fulfill all requirements of Wisconsin Administrative Code, Chapter A-E 5.02, U.S. Public Land Survey Monument Record (3) (a) (b) (c) (d) (e) (f) (g) (h) (i). An additional sheet may be added if necessary to conform with said requirements.

(a) Corner location: Township 39 North
 Range 5 East ~~West~~

Town/City/Village Minocqua
 County Oneida

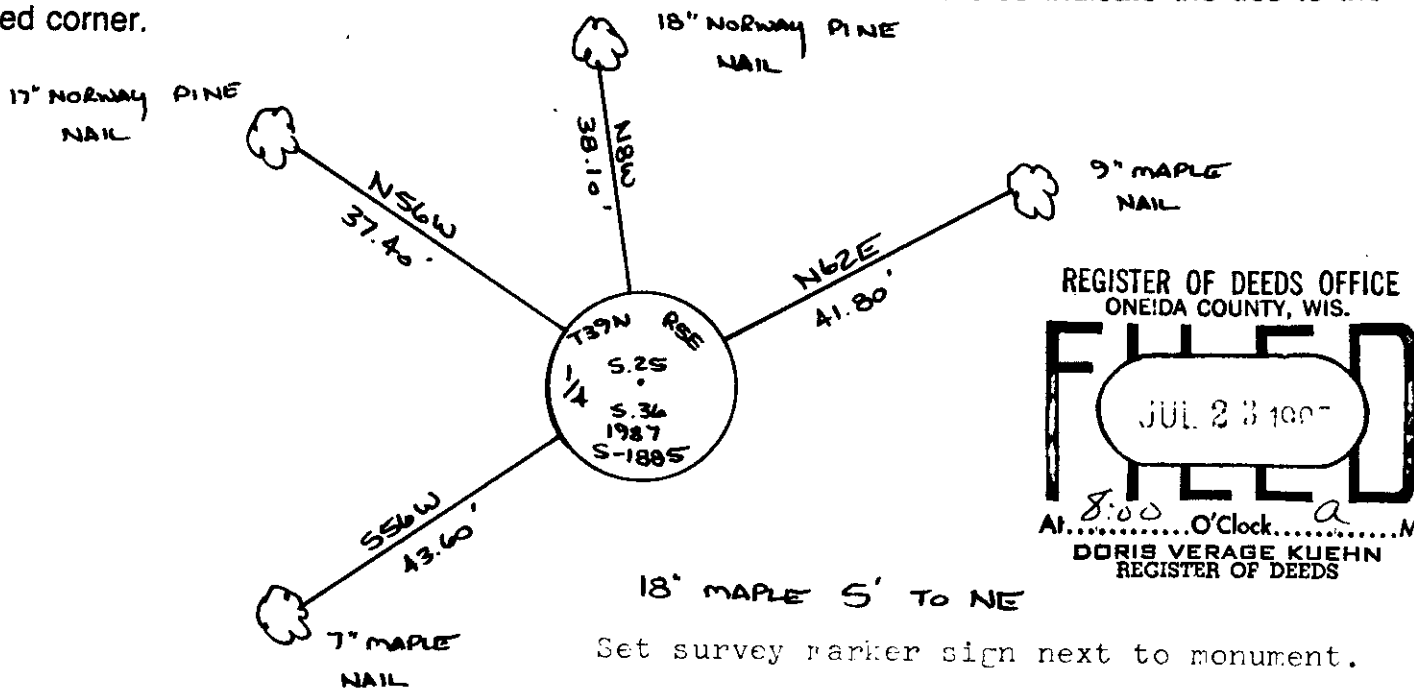


(b) (f) (g) (h) Description of monument found at this corner and if it was accepted, state all evidence (material, testimonial, occupational, plats, records, other monuments) used as a basis for accepting. If not accepted or if nothing was found, state evidence used as basis for establishing location. If reestablished through lost corner proportionate methods, indicate all monuments, distances and directions used to establish.

The original Government Survey was performed by Alex Andersen in 1863.
 (Wood post set)
 Birch 8" N65°E 23 lks.
 Aspen 5" S26°E 10 lks.

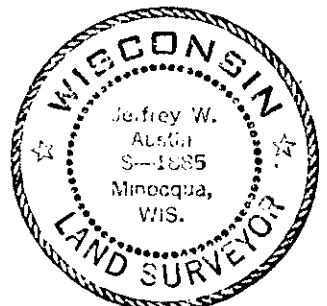
Found 5"X5" square concrete monument with chiseled "X". Monument was broken off, found base intact. Accepted monument and replaced with Oneida County capped Aluminum Monument. Monument location was confirmed by long time resident.

(c) (d) (e) Plan view of corner with ties to at least 4 witness monuments. If in disagreement with previously established corner, show the distances between the two corners and also indicate the ties to the disputed corner.



(i) I, Jeffrey W. Austin
 (type or print name) certify that the corner location on this record was determined by me or under my direction and control and that this U.S. Public Land Survey Monument Record is correct and complete to the best of my knowledge and belief.

Signature Jeffrey W. Austin Date July 17, 1987



3905250020

Index No. Y-23