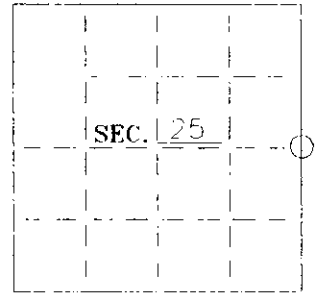


U. S. PUBLIC LAND SURVEY MONUMENT RECORD

Note: This form is intended and designed to fulfill all requirements of Wisconsin Administrative Code—Chapter A E 7.08 U. S. Public Land Survey Monument Record (3)(a)(b)(c)(d)(e)(f)(g)(h)(i). An additional sheet may be added if necessary to conform with said requirements.

(a) CORNER LOCATION: State Plane Coordinates
1/4 corner of Sec. 25 X
 Township 39 North Y
 Range 65 East Datum Base
 Town/~~City~~ Minocqua County of Oneida



(b) HISTORY OF ORIGINAL CORNER ESTABLISHMENT:

Original Surveyor: Alfred Millard
 Date of Survey: Commenced September 1860
 Completed September 1860

Original B.T.'S

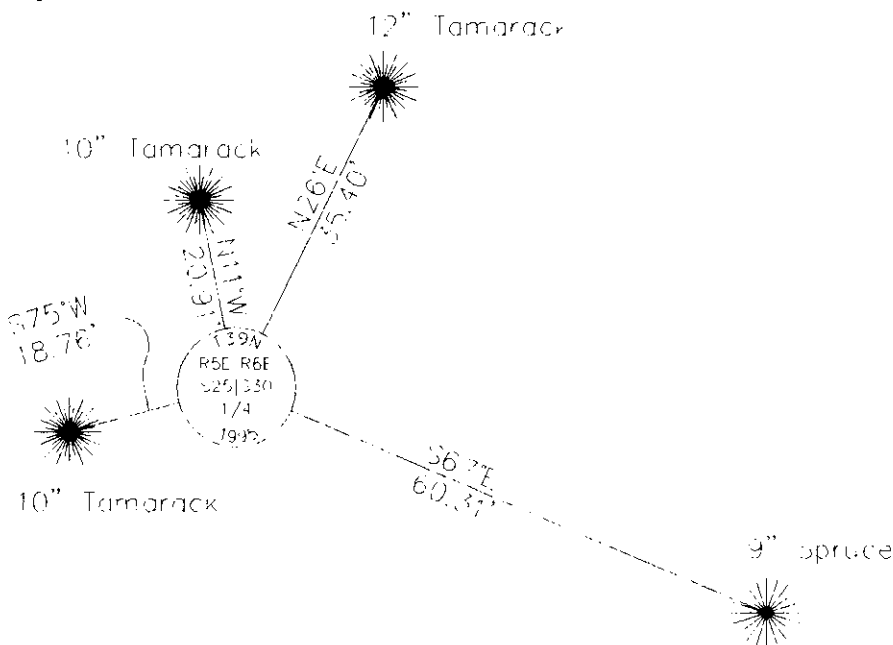
Spruce 10" S22°W 7 lks
 Cedar 10" N37°E 7 lks

(b)(f)(g)(h) Description of monument found at this corner and if it was accepted—state all evidence (material—testimonial—occupation—plats—records—other monuments) used as a basis for accepting. If not accepted or if nothing was found state evidence used as basis for establishing location. If reestablished through lost corner proportionate methods indicate all monuments—distances and directions used to establish. Indicate type of monument and sign post found or set.

June 3, 1931—Harry C. Hall Section Subdivision—References 6"x6"x42" concrete at East 1/4 of Section 25. Also states that "original B.T.'s practically gone" and lists new B.T.'s as follows: 10" White Birch S22°W 41.6' and 8" White Birch N54 1/2°E 39.1'

October 11, 1995—Found Hall's concrete and 10" White Birch snag at S22°W 41.9'. Replaced concrete with a 2-1/2" dia by 60" long aluminum capped Oneida County monument. Set plastic signpost 1-1/2' north.

(c)(d)(e) Plan view of corner with ties to at least 4 witness monuments. If in disagreement with previously established corner—show the distances between the two corners and also indicate the ties to the disputed.

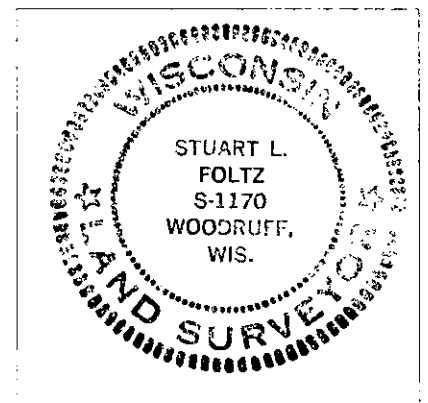


Set 16d galvanized nails in side of bearing trees.
 Placed survey marker plaque on front of bearing trees.

(i) I Stuart L. Foltz hereby certify that the corner location on this record was determined by me or under my direction and control and that this U.S. Public Land Survey Monument Record is correct and complete to the best of my knowledge and belief.

Stuart L. Foltz
 Signature

12-20-95
 Date



INDEX NO. 1

7-25
2-25

3905252000