

U.S. PUBLIC LAND SURVEY MONUMENT RECORD

NOTE: This form is intended and designed to fulfill all requirements of Wisconsin Administrative Code, Chapter A-E 7.08 U.S. Public Land Survey Monument Record. An additional sheet may be added if necessary to conform with said requirements.

CORNER LOCATION

Section Corner common to Sections 26, 27, 34, and 35
Township 39 North, Range 5 East of the 4th P.M.
Town of Minocqua, Oneida County, Wisconsin

CORNER ID:
3905270000

6	5	4	3	2	1
7	8	9	10	11	12
18	17	16	15	14	13
19	20	21	22	23	24
30	29	28	27	26	25
31	32	33	34	35	36

T39N - R5E

HISTORY OF ORIGINAL CORNER ESTABLISHMENT

ORIGINAL SURVEYOR: Anderson, Alex
DATE OF SURVEY: September 1863
ORIGINAL ACCESSORIES: At 80.00 ch, set post for corner
7" Tamarac, S88°E, 367 lks
No other Tree near

COORDINATES:
Oneida County, NAD 83(2011)
N: 235794.98
E: 155178.40

DESCRIPTION OF MONUMENT FOUND AT THIS CORNER AND IF IT WAS ACCEPTED, STATE ALL EVIDENCE MATERIAL, TESTIMONIAL, OCCUPATIONAL, PLATS, RECORDS, OTHER MONUMENTS USED AS A BASIS FOR ACCEPTING. IF NOT ACCEPTED OR IF NOTHING WAS FOUND, STATE EVIDENCE USED AS BASIS FOR ESTABLISHING LOCATION. IF RE-ESTABLISHED THROUGH LOST CORNER PROPORTIONATE METHODS, INDICATE ALL MONUMENTS, DISTANCES AND DIRECTIONS USED TO ESTABLISH. INDICATE TYPE OF MONUMENT AND SIGN POST FOUND OR SET.

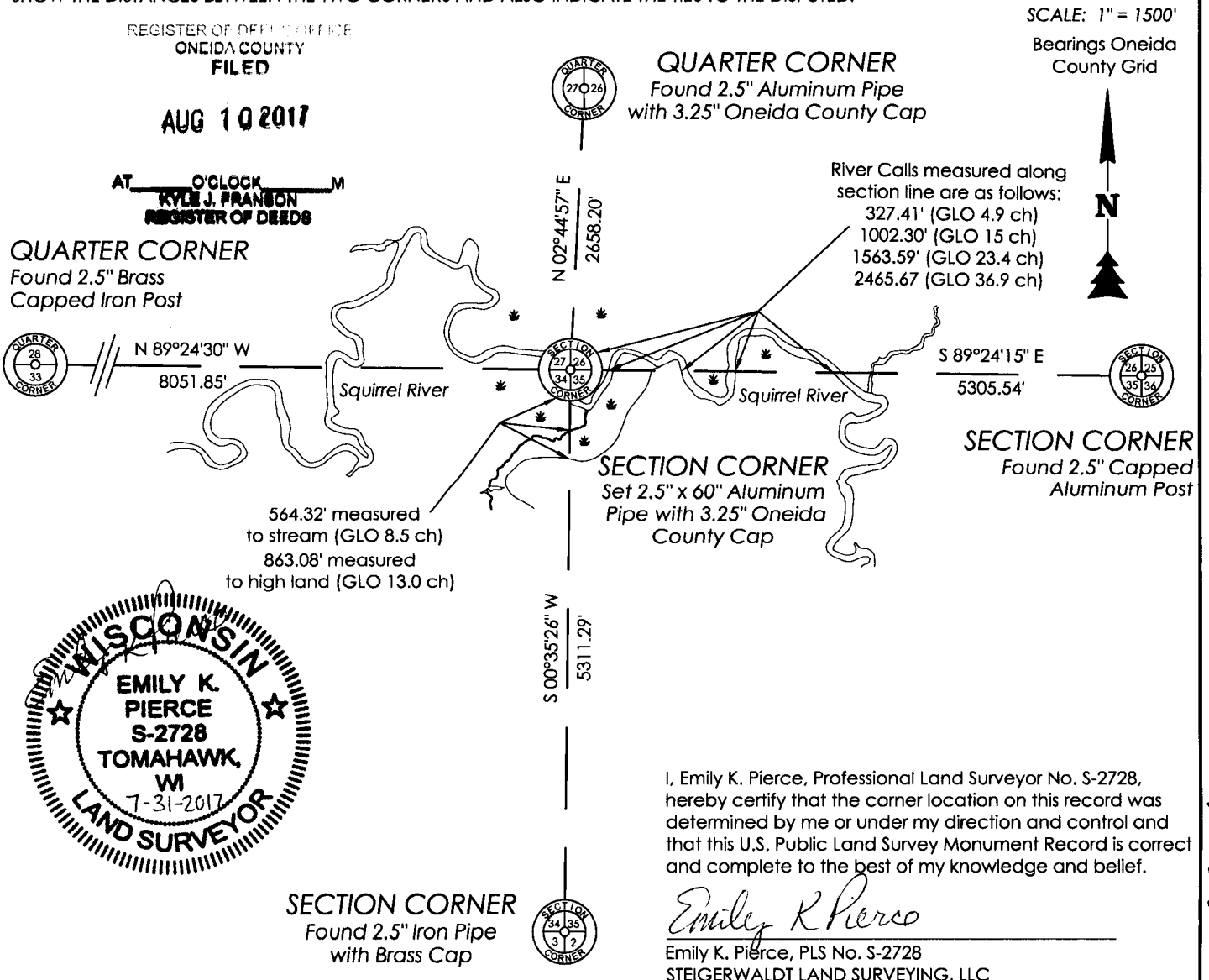
April 1, 1940 - CCC notes in Field book 12, pg 6 states they failed to find the corner post or the lone bearing tree. Henry Shebom (sp?) stated that a post stood on the north bank of the river back in 1927-28.

October 25, 1940 - CCC notes from Field book 13, pg 11, as well as restated in Field book 12, pg 6, states they searched again when there was no snow and failed to find corner post.

July 10, 2017, Jeff Austin visited corner location and searched large area, finding no evidence. River was flooded with at least 2 feet of standing water at search area. Computed double proportion location between the South Quarter of Section 28, the East Quarter of Section 27, the Southeast Corner of Section 34, and the Southeast Corner of Section 26. Checked location against GLO calls to Squirrel River running easterly from corner, and stream and high land calls southerly. Computed location fit well. Corner falls on south side of Squirrel River, however, I believe that channel has moved over time. If the corner resulted north of the river, many numerous calls both southerly and easterly would not fit. Accepted double proportion as corner location and set a 2.5" x 60" aluminum pipe with a 3.25" Oneida County aluminum cap at the corner location and set a white sign post 1 foot north of corner. This location is very wet and has no suitable areas to place accessory monuments to the corner location.

The coordinate value shown has been verified by at least one of the following methods: 1) comparison to a previously GPS determined published value; 2) the value is the average of two or more GPS observations at a markedly different time; 3) one or more distances were measured back to the GPS observed corner from temporary GPS observed offset locations.

PLAN VIEW OF CORNER WITH TIES TO AT LEAST 4 WITNESS MONUMENTS. IF IN DISAGREEMENT WITH PREVIOUSLY ESTABLISHED CORNER, SHOW THE DISTANCES BETWEEN THE TWO CORNERS AND ALSO INDICATE THE TIES TO THE DISPUTED.



V-17