

U.S. PUBLIC LAND SURVEY MONUMENT RECORD

NOTE: This form is intended and designed to fulfill all requirements of Wisconsin Administrative Code, Chapter A-E 7.08 U.S. Public Land Survey Monument Record. An additional sheet may be added if necessary to conform with said requirements.

CORNER LOCATION

Quarter Corner common to Sections 27 and 34
Township 39 North, Range 5 East of the 4th P.M.
Town of Minocqua, Oneida County, Wisconsin

CORNER ID:
3905270020

6	5	4	3	2	1
7	8	9	10	11	12
18	17	16	15	14	13
19	20	21	22	23	24
30	29	28	27	26	25
31	32	33	34	35	36

T39N - R5E

HISTORY OF ORIGINAL CORNER ESTABLISHMENT

ORIGINAL SURVEYOR: Anderson, Alex
DATE OF SURVEY: September 1863
ORIGINAL ACCESSORIES: At 40.05 ch, set quarter post
Bearings omitted

COORDINATES:
Oneida County, NAD 83(2011)
N: 235836.17
E: 152502.44

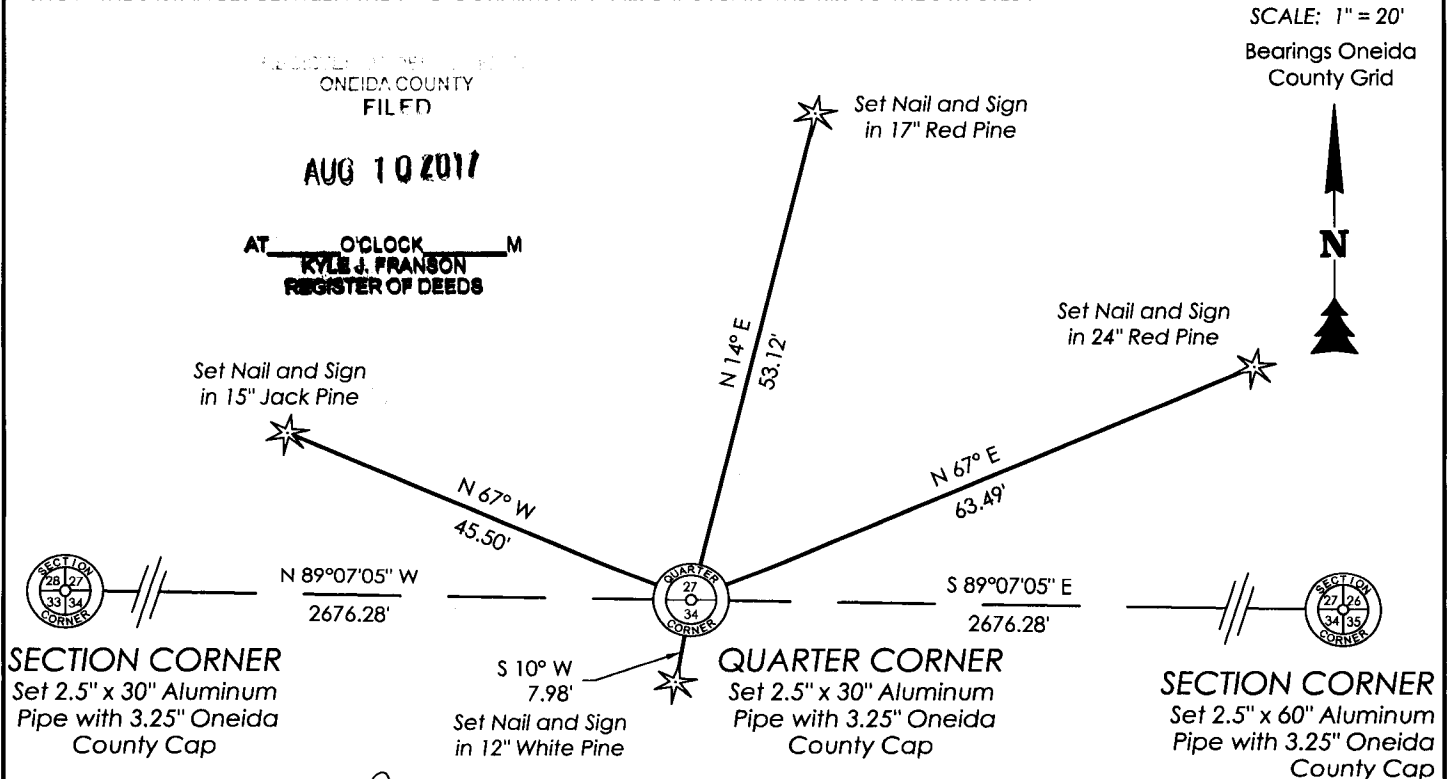
DESCRIPTION OF MONUMENT FOUND AT THIS CORNER AND IF IT WAS ACCEPTED, STATE ALL EVIDENCE MATERIAL, TESTIMONIAL, OCCUPATIONAL, PLATS, RECORDS, OTHER MONUMENTS USED AS A BASIS FOR ACCEPTING. IF NOT ACCEPTED OR IF NOTHING WAS FOUND, STATE EVIDENCE USED AS BASIS FOR ESTABLISHING LOCATION. IF RE-ESTABLISHED THROUGH LOST CORNER PROPORTIONATE METHODS, INDICATE ALL MONUMENTS, DISTANCES AND DIRECTIONS USED TO ESTABLISH. INDICATE TYPE OF MONUMENT AND SIGN POST FOUND OR SET.

April 2, 1940 - CCC notes in Field book 12, pg 7 states found nothing at 40.00 ch, marked tally on 2" aspen.

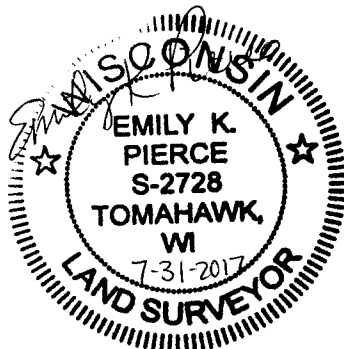
July 24, 2017, Jeff Austin visited corner location and searched large area, finding no evidence. Computed single proportion location between the Southeast Corners of Sections 27 and 28. GLO calls to Squirrel River fit well, measuring to the east 437.70' (GLO 6.55 ch) and to the west measured 2268.66' (GLO 33.95 ch). Accepted single proportion as corner location and set a 2.5" x 30" aluminum pipe with a 3.25" Oneida County aluminum cap at the corner location and a white vinyl sign post 1 foot northwest. Set nails and signs in trees and measured as shown below.

The coordinate value shown has been verified by at least one of the following methods: 1) comparison to a previously GPS determined published value; 2) the value is the average of two or more GPS observations at a markedly different time; 3) one or more distances were measured back to the GPS observed corner from temporary GPS observed offset locations.

PLAN VIEW OF CORNER WITH TIES TO AT LEAST 4 WITNESS MONUMENTS. IF IN DISAGREEMENT WITH PREVIOUSLY ESTABLISHED CORNER, SHOW THE DISTANCES BETWEEN THE TWO CORNERS AND ALSO INDICATE THE TIES TO THE DISPUTED.



SCALE: 1" = 20'
Bearings Oneida County Grid



I, Emily K. Pierce, Professional Land Surveyor No. S-2728, hereby certify that the corner location on this record was determined by me or under my direction and control and that this U.S. Public Land Survey Monument Record is correct and complete to the best of my knowledge and belief.

Emily K. Pierce

Emily K. Pierce, PLS No. S-2728
STEIGERWALDT LAND SURVEYING, LLC

V-15