

# U.S. PUBLIC LAND SURVEY MONUMENT RECORD

NOTE: This form is intended and designed to fulfill all requirements of Wisconsin Administrative Code, Chapter A-E 7.08 U.S. Public Land Survey Monument Record. An additional sheet may be added if necessary to conform with said requirements.

**CORNER LOCATION**

Section Corner common to Sections 27, 28, 33, and 34  
Township 39 North, Range 5 East of the 4th P.M.  
Town of Minocqua, Oneida County, Wisconsin

**CORNER ID:**  
3905280000

6	5	4	3	2	1
7	8	9	10	11	12
18	17	16	15	14	13
19	20	21	22	23	24
30	29	28	27	26	25
31	32	33	34	35	36

T39N - R5E

**HISTORY OF ORIGINAL CORNER ESTABLISHMENT**

ORIGINAL SURVEYOR: Anderson, Alex  
DATE OF SURVEY: September 1863  
ORIGINAL ACCESSORIES: At 80.00 ch, set post for corner  
6" Tamarac, S14°W, 146 lks  
6" Tamarac, S6°E, 164 lks

**COORDINATES:**  
Oneida County, NAD 83(2011)  
N: 235877.37  
E: 149826.49

DESCRIPTION OF MONUMENT FOUND AT THIS CORNER AND IF IT WAS ACCEPTED, STATE ALL EVIDENCE MATERIAL, TESTIMONIAL, OCCUPATIONAL, PLATS, RECORDS, OTHER MONUMENTS USED AS A BASIS FOR ACCEPTING. IF NOT ACCEPTED OR IF NOTHING WAS FOUND, STATE EVIDENCE USED AS BASIS FOR ESTABLISHING LOCATION. IF RE-ESTABLISHED THROUGH LOST CORNER PROPORTIONATE METHODS, INDICATE ALL MONUMENTS, DISTANCES AND DIRECTIONS USED TO ESTABLISH. INDICATE TYPE OF MONUMENT AND SIGN POST FOUND OR SET.

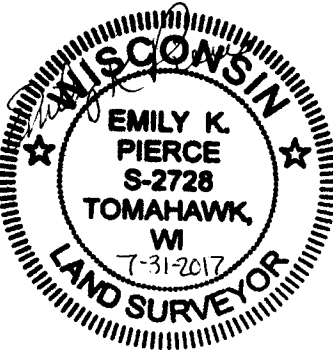
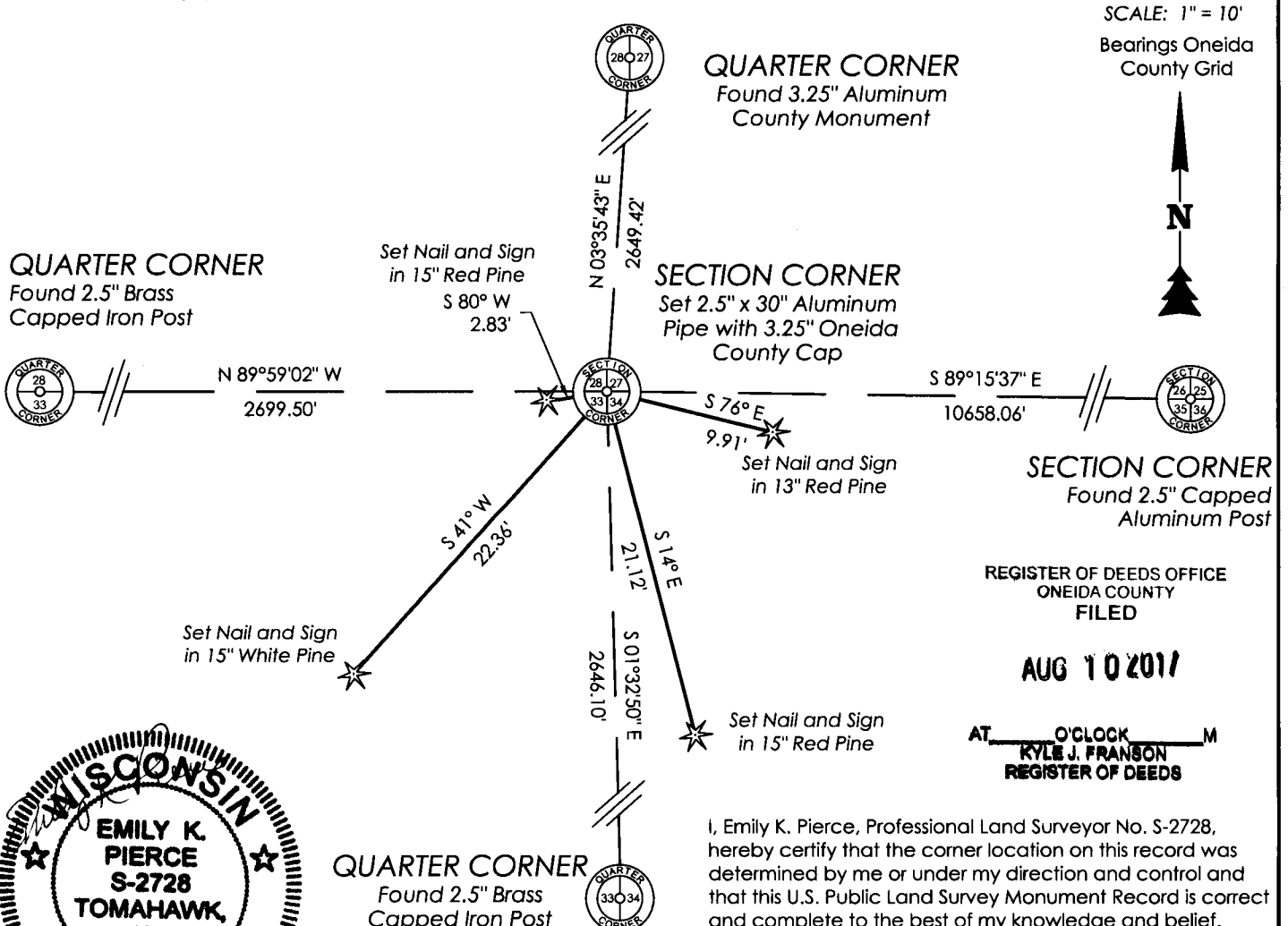
April 1934 - Old Field book 51, pg 14 states that there were many dead tamaracs standing and down. Found squared tamarac with cruiser marks was the only evidence. Impossible to tell if marks were close to the actual corner location or near original bearing trees. The record distance east and west between river and hard land does not exist in the field. Set tall flag at point which seems probable.

April 2, 1940 - CCC notes in Field book 12, pg 8 states they found an old squared tamarac stub with cruiser marks. No sign of bearing trees. Comments that the search in 1935 was on bare ground and could not locate the flag set at that time. Also stubs from 1935 were also down at this time. (I believe the reference to 1935 in these notes was to the 1934 notes)

July 24, 2017, Jeff Austin visited corner location and searched large area, finding no evidence. Computed double proportion location between the South Quarter of Section 28, the East Quarter of Section 28, the East Quarter Corner of Section 33, and the Southeast Corner of Section 26. Checked location against GLO calls to Squirrel River running easterly from corner, and the swamp and high land calls west. Computed location fit well with the stream call East measured 407.62' (GLO 6.10 ch), and the tamarac swamp measured 868.65' (GLO 13 ch). The call in the GLO westerly 3.00 ch. does not fit, but believe this is the same issue that was eluded to in 1934 notes. Accepted double proportion as corner location and set a 2.5" x 30" aluminum pipe with a 3.25" Oneida County aluminum cap at the corner location. Set White sign post 1 foot northeast, and set nails and signs on trees as accessories to the corner, measured as shown below.

The coordinate value shown has been verified by at least one of the following methods: 1) comparison to a previously GPS determined published value; 2) the value is the average of two or more GPS observations at a markedly different time; 3) one or more distances were measured back to the GPS observed corner from temporary GPS observed offset locations.

PLAN VIEW OF CORNER WITH TIES TO AT LEAST 4 WITNESS MONUMENTS. IF IN DISAGREEMENT WITH PREVIOUSLY ESTABLISHED CORNER, SHOW THE DISTANCES BETWEEN THE TWO CORNERS AND ALSO INDICATE THE TIES TO THE DISPUTED.



I, Emily K. Pierce, Professional Land Surveyor No. S-2728, hereby certify that the corner location on this record was determined by me or under my direction and control and that this U.S. Public Land Survey Monument Record is correct and complete to the best of my knowledge and belief.

*Emily K. Pierce*  
Emily K. Pierce, PLS No. S-2728  
STEIGERWALDT LAND SURVEYING, LLC

V-13