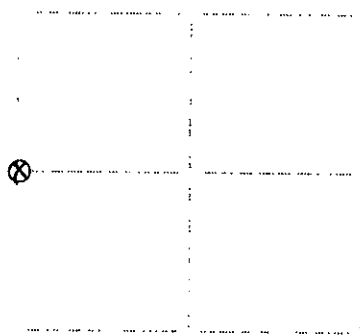


**U.S. PUBLIC LAND SURVEY MONUMENT RECORD**

Note: This form is intended and designed to fulfill all requirements of Wisconsin Administrative Code, Chapter A-E 7.09 U.S. Public Land Survey Monument Record (Division of Land Surveying, Inc.). An additional sheet may be added if necessary to conform with said requirements.

(a) Corner location: Township 39 North  
 Range 5 East  
 Town of Minocqua  
 Oneida County, Wisconsin



**Section 27**

Provide a description of monument found at this corner and if it was accepted, state all evidence (material, testimonial, occupational, plats, records, other monuments) used as a basis for accepting. If not accepted or if nothing was found, state evidence used as basis for establishing location. If reestablished through lost corner proportionate methods, indicate all monuments, distances and directions used to establish. Indicate type of monument found or set and sign post.

September, 1857: Alexander Anderson, US deputy surveyor notes the following: 40.00 set 1/4 sec. post: y.pine 16 N33E, 50 lks. and other near

June 7, 1935: DOC notes the following: Base of large norway pine one near my 563W p.c. .59 1/2 find square hole under the sod. Square hole about 7" x 7" with rotted wood. Set temp. plug.

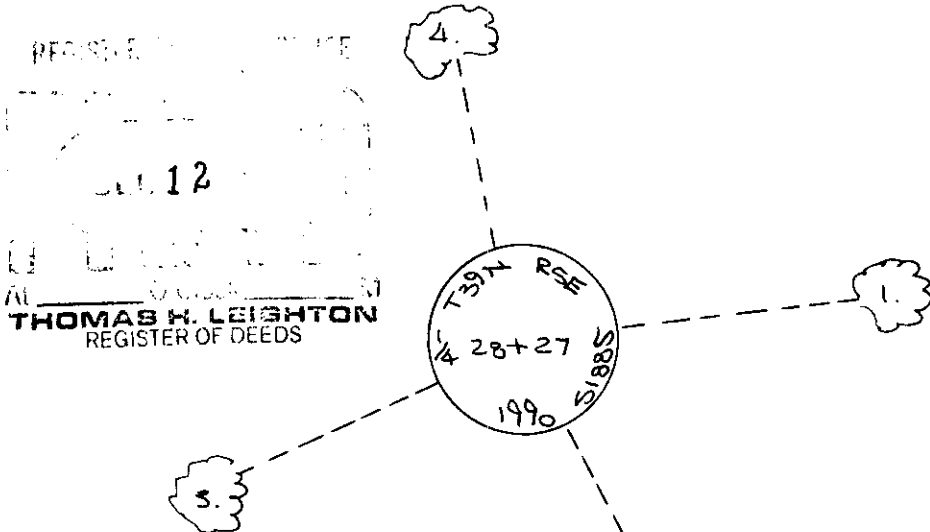
August 17, 1935: doc book 4, page 95 notes the following: Set anchored iron shaft 3/4" for corner with cedar post alongside. S176E, 21.72; back S N81E, 49; back S 94S-1 Sw, 49; centerline old road east, .21.

November 3, 1990: I found and accepted a 3/4" dia. iron rod with anchors attached per doc description. I replaced with aluminum post, 30" long, 3/4" dia., 1/2" in the ground with aluminum cap marked as shown below. I buried a 'deep 1' magnet at the base of post. I found the following witnesses: old pine stumpwood: S49W, 32.5 feet; set nail in j.pine (ecc): 12" N83E, 32.71 feet; centerline of woods road bears east, 30 feet. I established the following witnesses: set nail in j.pine 9" S28E, 30.92 feet; set nail in j.pine 8" S65W, 26.13 feet; set nail in j.pine 10" N11W, 21.04 feet; set plastic sign post north 1 foot.

Additional: Plan view of corner which ties to at least four witness monuments. If in disagreement with previously established corner, show the distances between the two corners and also indicate the ties to the disputed corner.

1. nail in j.pine 12" N83E, 32.71 feet.
2. nail in j.pine 9" S28E, 30.92 feet.
3. nail in j.pine 8" S65W, 26.13 feet.
4. nail in j.pine 10" N11W, 21.04 feet.

(not to scale)



I, Jeffrey W. Austin, Registered Land Surveyor S-1885 certify that the corner location on this record was determined by me or under my direction and control and that this U.S. Public Land Survey Monument Record is correct and complete to the best of my knowledge and belief.

*Jeffrey W. Austin*

November 30, 1990



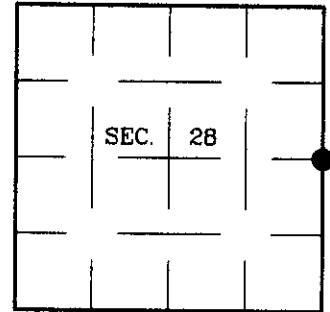
Index no. T-13

3905282000

# U.S. PUBLIC LAND SURVEY MONUMENT RECORD

Note: This form is intended and designed to fulfill all requirements of Wisconsin Administrative Code, Chapter A-E 7.08 U.S. Public Land Survey Monument Record (3)(a)(b)(c)(d)(e)(f)(g)(h)(i). An additional sheet may be added if necessary to conform with said requirements.

(a) CORNER LOCATION: Plane Coordinates  
 1/4 Corner common to Secs. 27 and 28 X:  
 Township 39 North Y:  
 Range 5 East, 4th Principal Meridian Datum:  
 Town of Minocqua County of Oneida



(b) HISTORY OF ORIGINAL CORNER ESTABLISHMENT

Original Surveyor: Alexander Anderson  
 Date of Survey: Commenced: Sept. 15, 1863  
 Completed: Sept. 20, 1863

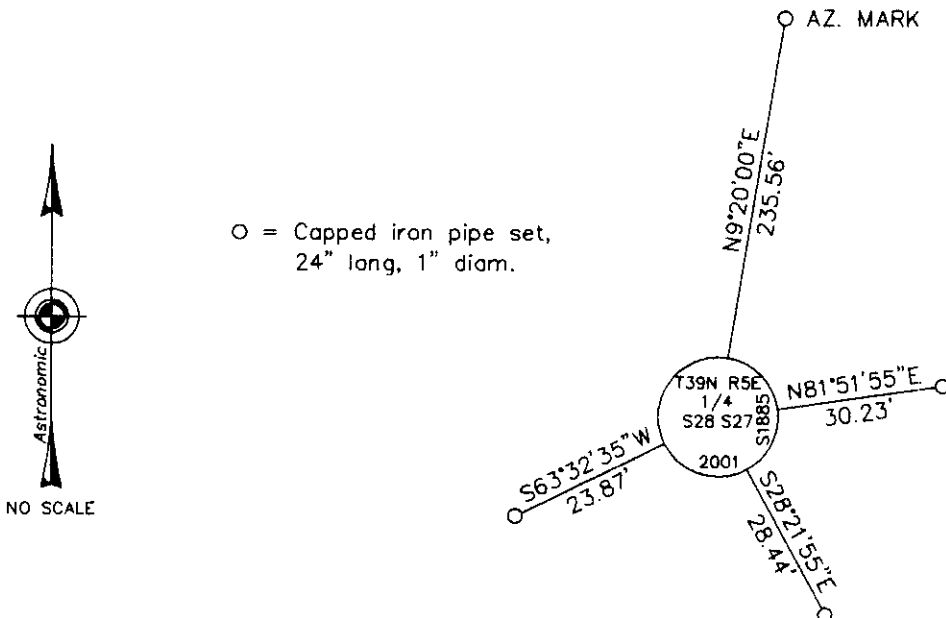
Original Accessories:  
 Yellow Pine 16 N33°E 50 lks.  
 No other near

(b)(f)(g)(h) Description of monument found at this corner and if it was accepted, state all evidence (material, testimonial, occupational, plats, records, other monuments) used as a basis for accepting. If not accepted or if nothing was found, state evidence used as basis for establishing location. If reestablished through lost corner proportionate methods, indicate all monuments, distances and directions used to establish. Indicate type of monument and sign post found or set.

NOTE: This is a perpetuation of a previous USPLS Monument Record by Jeffrey W. Austin, RLS dated November 30, 1990 and filed in the office of the Oneida County Register of Deeds. A complete history of the corner can be found on the previous monument record. I accept the previous location as a true and faithful perpetuation or reestablishment of the original corner location and further perpetuate it as follows.

May 28, 2001: I found my plastic sign post and DEEP-1 magnet as described in my monument record. I found no evidence of the previous monument. I found my Northwesterly bearing tree wind-thrown, and the others recently cut by loggers. I found the location of the DEEP-1 magnet to agree with the distances from the bearing tree remains. I set an aluminum post, 30 ins. long, 2-1/2 ins. diam., with 3-1/4 ins. diam. Oneida Co. aluminum cap 2 ins. above the ground surface and marked as shown below. I set reference monuments as shown below and performed an hour-angle solar observation to the azimuth mark. The centerline of a dirt logging road bears East, 13 ft. dist. and bears N12°E and S16°W. The plastic sign post bears North, 1 ft. dist.

(c)(d)(e) Plan view of corner with ties to at least 4 witness monuments. If in disagreement with previously established corner, show the distances between the two corners and also indicate the ties to the disputed.



(i) I, Jeffrey W. Austin, Registered Land Surveyor No. S-1885, hereby certify that the corner location on this record was determined by me or under my direction and control and that this U.S. Public Land Survey Monument Record is correct and complete to the best of my knowledge and belief.

Signature

Date

8-27-01



INDEX NO. T-13

390528, 2000