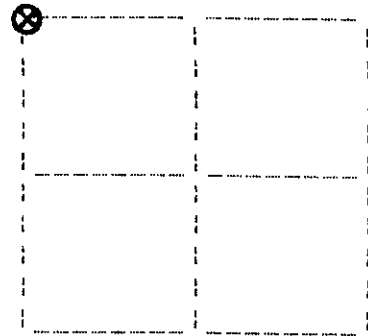


**U. S. PUBLIC LAND SURVEY MONUMENT RECORD**

Note: This form is intended and designed to fulfill all requirements of Wisconsin Administrative Code, Chapter A-E 7.08 U.S. Public Land Survey Monument Record(3)(a)(b)(c)(d)(e)(f)(g)(h)(i). An additional sheet may be added if necessary to conform with said requirements.

(a) Corner location: Township 39 North  
 Range 5 East  
 Town of Minocqua  
 Oneida County, Wisconsin



**Section 33**

(b)(f)(g)(h) Description of monument found at this corner and if it was accepted, state all evidence (material, testimonial, occupational, plats, records, other monuments) used as a basis for accepting. If not accepted or if nothing was found, state evidence used as basis for establishing location. If reestablished through lost corner proportionate methods, indicate all monuments, distances and directions used to establish. Indicate type of monument found or set and sign post.

September, 1863: Alexander Anderson notes the following: 80.00 set post for cor. to secs. 28,29,32&33: w.pine 10 N36°W, 25 lks.; tamarac 6 N21°E, 18 lks.

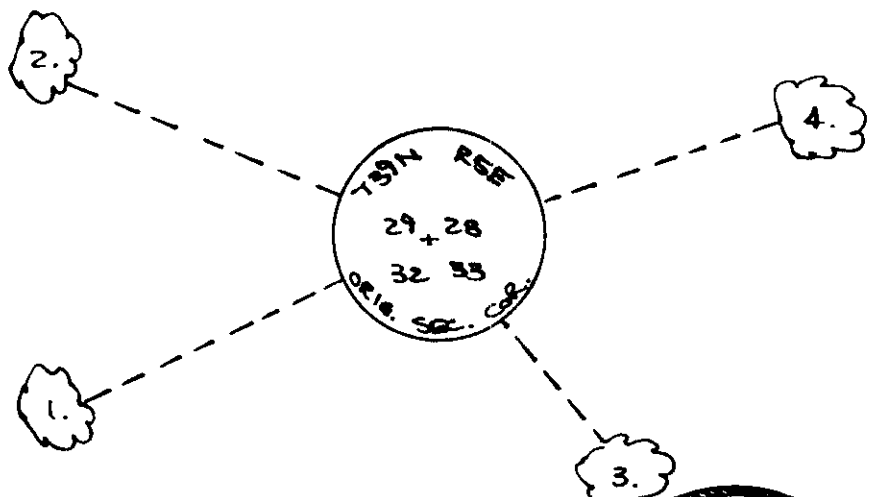
December 7, 1933: Hall page 205 notes the following: make compass traverse of old crooked trail NWly to squirrel hill with view of straightening. set new post at orig. NE cor. 32, shown me by s.b. mc coy. NW orig. bearing is y.pine stub 10' high good boxing. charred but ok. intersect record meas. from this & from grubbed off stp. of tamarac in sleigh road. falls about in CL narrow swamp swale (N&S). orig. bears: y.p. N47°W, 16.5'; tam. N9°E, 11.9'. new: jack pine 7° N50°W, 37'; jack pine 6° S42°E, 46.7'; jack pine 6° N36°E, 35'.

August 25, 1990: I found and accepted a 3" dia. iron cap on a iron post in N-S swale stamped as shown below. I found the following witnesses: rotted stp. N43°E, 35.0 feet; 10' high charred pine stp. with scribing plain N45°W, 16.5 feet; jack pine (dead) with scribing plain 12" S36°E, 46.8 feet; set nail in n.pine 18" S64°W, 19.97 feet; set nail in n.pine 15" N68°W, 20.54 feet. I established the following witnesses: set nail in n.pine 17" S40°E, 36.65 feet; set nail in n.pine 9" N71°E, 20.63 feet; set plastic sign post north, 1 foot.

(c)(d)(e) Plan view of corner with ties to at least four witness monuments. If in disagreement with previously established corner, show the distances between the two corners and also indicate the ties to the disputed corner.

1. nail in n.pine 18"  
S64W, 19.97 feet.
2. nail in n.pine 15"  
N68W, 20.54 feet.
3. nail in n.pine 17"  
S40E, 36.65 feet.
4. nail in n.pine 9"  
N71E, 20.63 feet.

(not to scale)



I, Jeffrey W. Austin, Registered Land Surveyor S-1885 certify that the corner location on this record was determined by me or under my direction and control and that this U.S. Public Land Survey Monument Record is correct and complete to the best of my knowledge and belief.



*Jeffrey W. Austin*  
 Signature Date SEPTEMBER 3, 1990

Index no. V-9

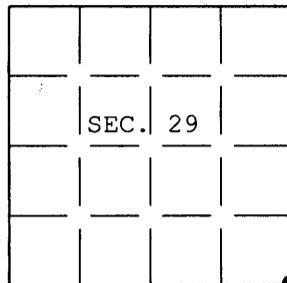
3905290000

V-9

**U.S. PUBLIC LAND SURVEY MONUMENT RECORD**

Note: This form is intended and designed to fulfill all requirements of Wisconsin Administrative Code, Chapter A-E 7.08 U.S. Public Land Survey Monument Record (3) (a) (b) (c) (d) (e) (f) (g) (h) (i). An additional sheet may be added if necessary to conform with said requirements.

(a) CORNER LOCATION: Plane Coordinates  
 Cor. of Secs. 28, 29, 32 & 33 X:  
 Township 39 North Y:  
 Range 5 East of the 4th P.M. Datum:  
 Town of Minocqua County of Oneida



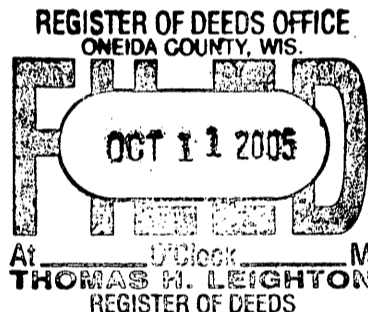
(b) HISTORY OF ORIGINAL CORNER ESTABLISHMENT

Original Surveyor: Alexander Anderson Original Accessories:  
 Date of Survey: Commenced Sept. 1863 W.Pine 10" N.36°W., 25 lks.  
 Completed Sept. 1863 Tamarack 6" N.21°E., 18 lks.

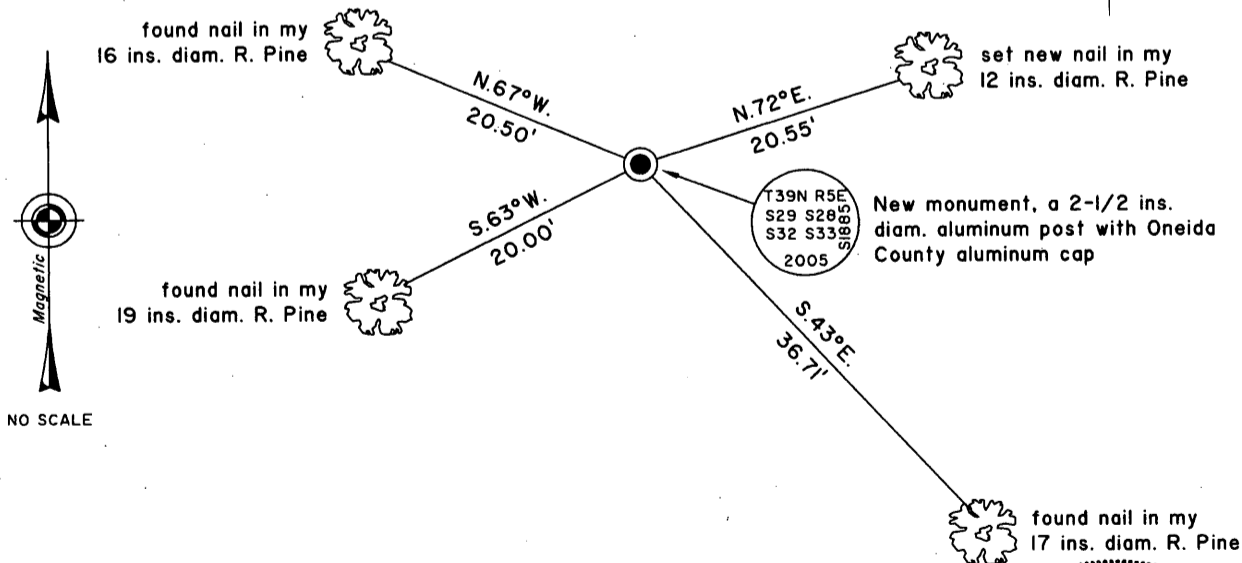
(b) (f) (g) (h) Description of monument found at this corner and if it was accepted, state all evidence (material, testimonial, occupational, plats, records, other monuments) used as a basis for accepting. If not accepted or if nothing was found, state evidence used as basis for establishing location. If re-established through lost corner proportionate methods, indicate all monuments, distances and directions used to establish. Indicate type of monument and sign post found or set.

3 Sept. 1990: USPLS Monument Record prepared by Jeffrey W. Austin and filed in the office of the Oneida County Register of Deeds. Found 2-1/2 ins. diam. iron post with brass cap based on previously perpetuated location.

2 June 2005: I found and accepted my previous monument, a 2-1/2 ins. diam. iron post with brass cap now rusted off at the bog surface. I replaced the rusted monument with an aluminum post, 60 ins. long, 2-1/2 ins. diam. with Oneida County aluminum cap projecting 16 ins. above the bog surface. I placed a blue/black "DEEP-1" magnet beneath the new monument. I found accessories as shown below and found a white plastic sign post bearing North, 1 ft. dist.



(c) (d) (e) Plan view of corner with ties to at least 4 witness monuments. If in disagreement with previously established corner, show the distances between the two corners and also indicate the ties to the disputed.



(i) I, Jeffrey W. Austin, Registered Land Surveyor No. S-1885, hereby certify upon honor that the corner location on this record was determined by me or under my direction and control and that this U.S. Public Land Survey Monument Record is correct and complete to the best of my knowledge and belief.

*[Handwritten Signature]*

7 JUNE 2005  
 Date



INDEX NO. V-9

39 05 29 00 00