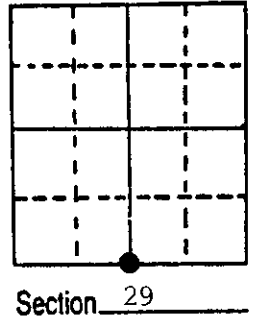
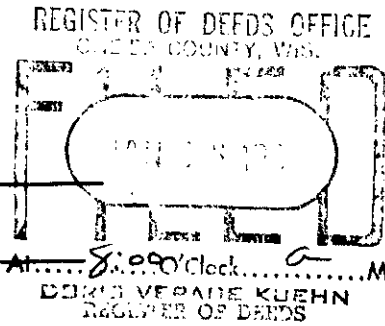


# U.S. PUBLIC LAND SURVEY MONUMENT RECORD

**Note:** This form is intended and designed to fulfill all requirements of Wisconsin Administrative Code, Chapter A-E 5.02, U.S. Public Land Survey Monument Record (3) (a) (b) (c) (d) (e) (f) (g) (h) (i). An additional sheet may be added if necessary to conform with said requirements.

(a) Corner location: Township 39 North  
 Range 5 East/West  
 Town/City/Village Minocqua  
 County Oneida



(b) (f) (g) (h) Description of monument found at this corner and if it was accepted, state all evidence (material, testimonial, occupational, plats, records, other monuments) used as a basis for accepting. If not accepted or if nothing was found, state evidence used as basis for establishing location. If reestablished through lost corner proportionate methods, indicate all monuments, distances and directions used to establish.

September 1863 - Alexander Anderson, deputy surveyor - Set One Quarter Section post.

B.T.'s: Cedar 8", S28°W, 14 links; Cedar 8", N55°E, 10 links.

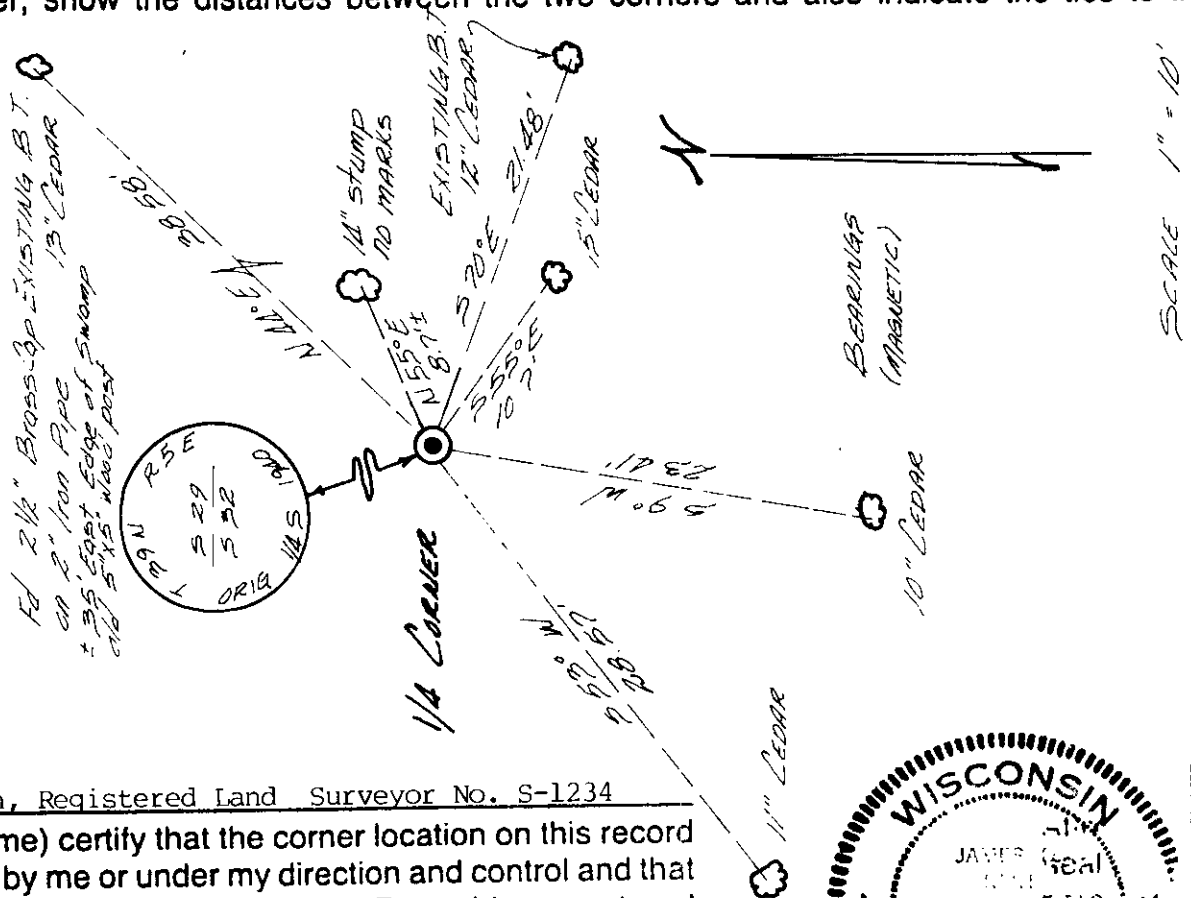
September 19th, 1934 - R.H. Hall, surveyor - (Oneida County Field Book 3-364A)

Original 1/4 between 29 & 32. The NELY brng is only one which can be positively identified marks Okay. Other doubtful. Drive new scribed cedar post S55°W P.C. 10 links from B.T. New B.T.'s: Cedar 7", S71°E, .329 ch; Cedar 9", N44°E, .576 ch. Old B.T: N58 1/2°E, 10 links. Other ? S45°W, 16 links ±.

December 8th, 1987 - James D. Rein, RLS - Found brass capped 2" dia. iron pipe marked as shown in diagram located in swamp ±35 feet from easterly edge. Old 5"x5" post marked "1/4 S32, S29" Sets along side corner monument. Existing B.T.'s: 13" Cedar N44°E, 38.58 feet; 12" Cedar S70°E, 21.48 feet; 15" Cedar ram pike S55°E, 10.7 feet; ±14" Stump N55°E, 8.7 feet. Made B.T.'s: 10" Cedar S9°W, 23.41 feet; 11" Cedar S53°W, 28.57 feet. Set plastic post Northwest 1.1 feet from corner monument.

Note: Distance measurements to live trees made to aluminum nails set in center of root crown on side of tree.

(c) (d) (e) Plan view of corner with ties to at least 4 witness monuments. If in disagreement with previously established corner, show the distances between the two corners and also indicate the ties to the disputed corner.



(i) I, James D. Rein, Registered Land Surveyor No. S-1234  
 (type or print name) certify that the corner location on this record was determined by me or under my direction and control and that this U.S. Public Land Survey Monument Record is correct and complete to the best of my knowledge and belief.

James D. Rein  
 Signature

December 21st, 1987  
 Date



Index No. V-1

3905290020