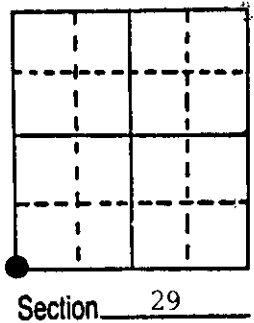
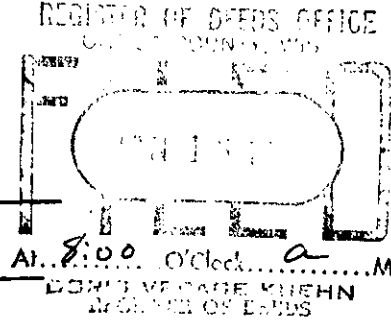


U.S. PUBLIC LAND SURVEY MONUMENT RECORD

Note: This form is intended and designed to fulfill all requirements of Wisconsin Administrative Code, Chapter A-E 5.02, U.S. Public Land Survey Monument Record (3) (a) (b) (c) (d) (e) (f) (g) (h) (i). An additional sheet may be added if necessary to conform with said requirements.

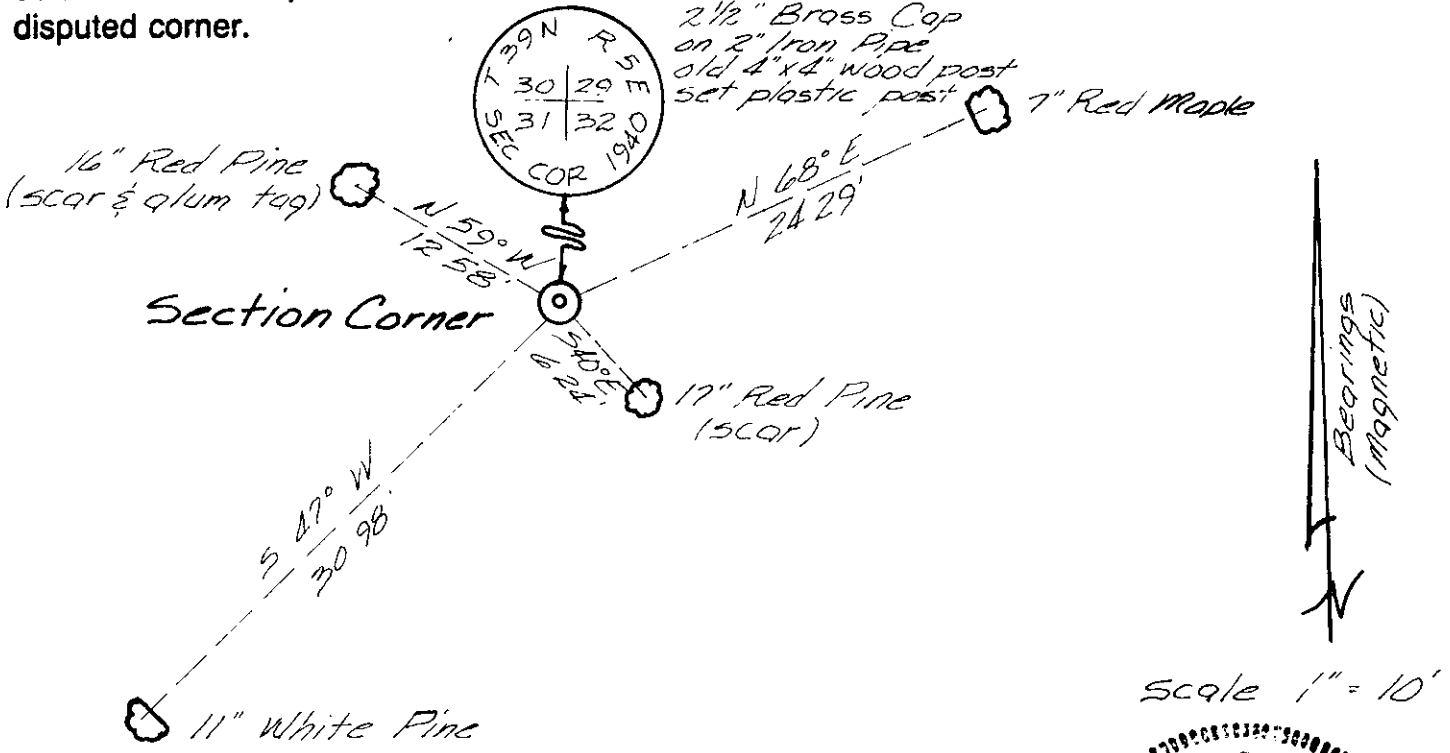
(a) Corner location: Township 39 North
 Range 5 East/West
 Town/City/Village Minocqua
 County Oneida



(b) (f) (g) (h) Description of monument found at this corner and if it was accepted, state all evidence (material, testimonial, occupational, plats, records, other monuments) used as a basis for accepting. If not accepted or if nothing was found, state evidence used as basis for establishing location. If reestablished through lost corner proportionate methods, indicate all monuments, distances and directions used to establish.

September 1863 - Alexander Anderson, deputy surveyor - Set post for corner to Sections 29, 30, 31, & 32. B.T.'s: 18" Hemlock N43°W, 46 links; 15" White Pine N40°E, 36 links.
 December 8th, 1987 - James D. Rein, RLS - Found brass capped 2" dia. iron pipe marked as shown below in diagram. Exiting B.T.'s: 16" Red Pine N59°W, 12.58 feet; 17" Red Pine S40°E, 6.24 feet. Made B.T.'s: 11" White Pine S47°W, 30.98 feet; 7" Red Maple N68°E, 24.29 feet. Set plastic post 1 foot Southwest of corner monument.
 Note: Distance measurements made to aluminum nails set in center of root crown on side of tree facing corner.

(c) (d) (e) Plan view of corner with ties to at least 4 witness monuments. If in disagreement with previously established corner, show the distances between the two corners and also indicate the ties to the disputed corner.



(i) I, James D. Rein, Registered Land Surveyor No. S-1234
 (type or print name) certify that the corner location on this record was determined by me or under my direction and control and that this U.S. Public Land Survey Monument Record is correct and complete to the best of my knowledge and belief.

Signature _____ Date December 21st, 1987

Index No. V-5

3905300000