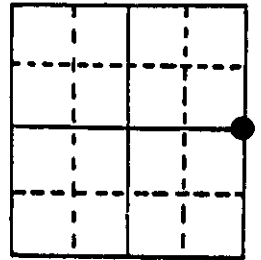


U.S. PUBLIC LAND SURVEY MONUMENT RECORD

Note: This form is intended and designed to fulfill all requirements of Wisconsin Administrative Code, Chapter A-E 5.02, U.S. Public Land Survey Monument Record (3) (a) (b) (c) (d) (e) (f) (g) (h) (i). An additional sheet may be added if necessary to conform with said requirements.

(a) Corner location: Township 39 North
 Range 5 East

East One-Quarter
 Corner of Section 30



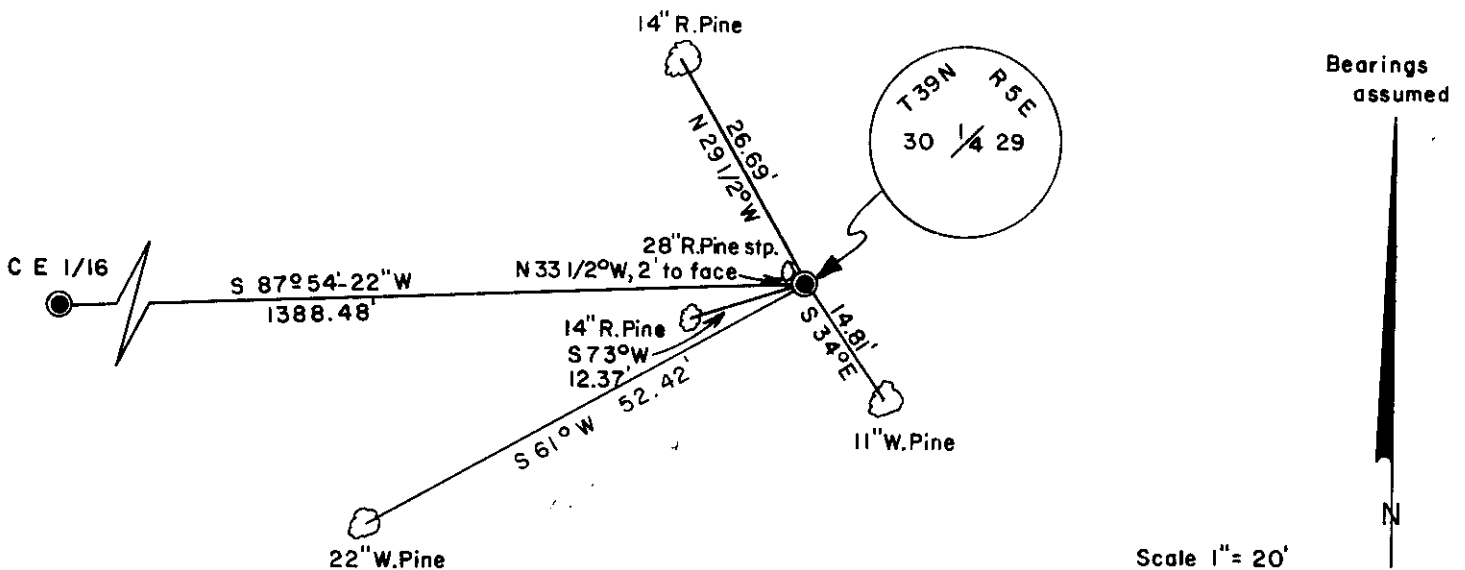
Section 30

Town Minocqua
 County Oneida

(b) (f) (g) (h) Description of monument found at this corner and if it was accepted, state all evidence (material, testimonial, occupational, plats, records, other monuments) used as a basis for accepting. If not accepted or if nothing was found, state evidence used as basis for establishing location. If reestablished through lost corner proportionate methods, indicate all monuments, distances and directions used to establish.

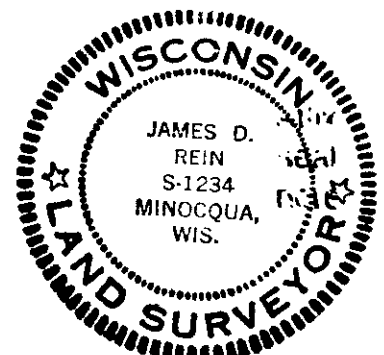
- September 18, 1863 - Alex Anderson, Deputy Surveyor, Set $\frac{1}{4}$ Section post. Bearing trees: 10" Birch, N16°E, 13 links. 10" Birch S86°W, 6 links.
- May 1890 - B.F. Dorr - Set New $\frac{1}{4}$ post. bearing trees: 8" Maple S56 3/4°W, 38 links. 28" Y. Pine stump N29°W, 2 links.
- July 9, 1934 - R. H. Hall set 1 1/2" Iron Rod for original East $\frac{1}{4}$ Corner and cedar post. Bearing trees: 10" W. Pine S61 1/2°W, 52.1 feet. 11" Y Pine N21°W, 67.3 feet. Remark Dorr's stump (Y. Pine) 1.3 feet.
- April 16, 1986 - James D. Rein - found 2" O.D. iron pipe with brass cap stamped to identify corner as shown on plan view.

(c) (d) (e) Plan view of corner with ties to at least 4 witness monuments. If in disagreement with previously established corner, show the distances between the two corners and also indicate the ties to the disputed corner.



(i) I, James D. Rein, Registered Land Surveyor No. S-1234
 (type or print name) certify that the corner location on this record was determined by me or under my direction and control and that this U.S. Public Land Survey Monument Record is correct and complete to the best of my knowledge and belief.

Signature James D. Rein Date May 24, 1986



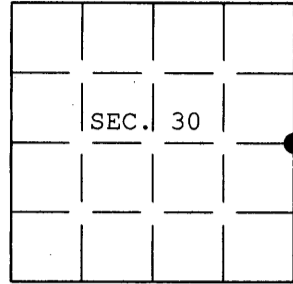
Index No. 7-5

3905302000

U.S. PUBLIC LAND SURVEY MONUMENT RECORD

Note: This form is intended and designed to fulfill all requirements of Wisconsin Administrative Code, Chapter A-E 7.08 U.S. Public Land Survey Monument Record (3) (a) (b) (c) (d) (e) (f) (g) (h) (i). An additional sheet may be added if necessary to conform with said requirements.

(a) CORNER LOCATION: Plane Coordinates
 1/4 Cor. of Secs. 29 & 30 X:
 Township 39 North Y:
 Range 5 East of the 4th P.M. Datum:
 Town of Minocqua County of Oneida



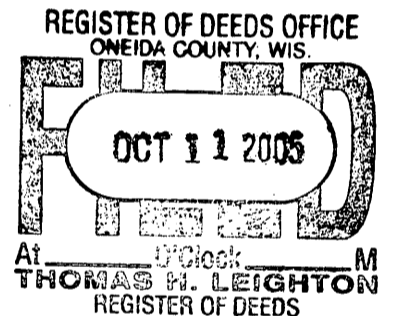
(b) HISTORY OF ORIGINAL CORNER ESTABLISHMENT

Original Surveyor: Alexander Anderson Original Accessories:
 Date of Survey: Commenced Sept. 1863 Birch 10" N.16°E., 13 lks.
 Completed Sept. 1863 Birch 10" S.86°W., 6 lks.

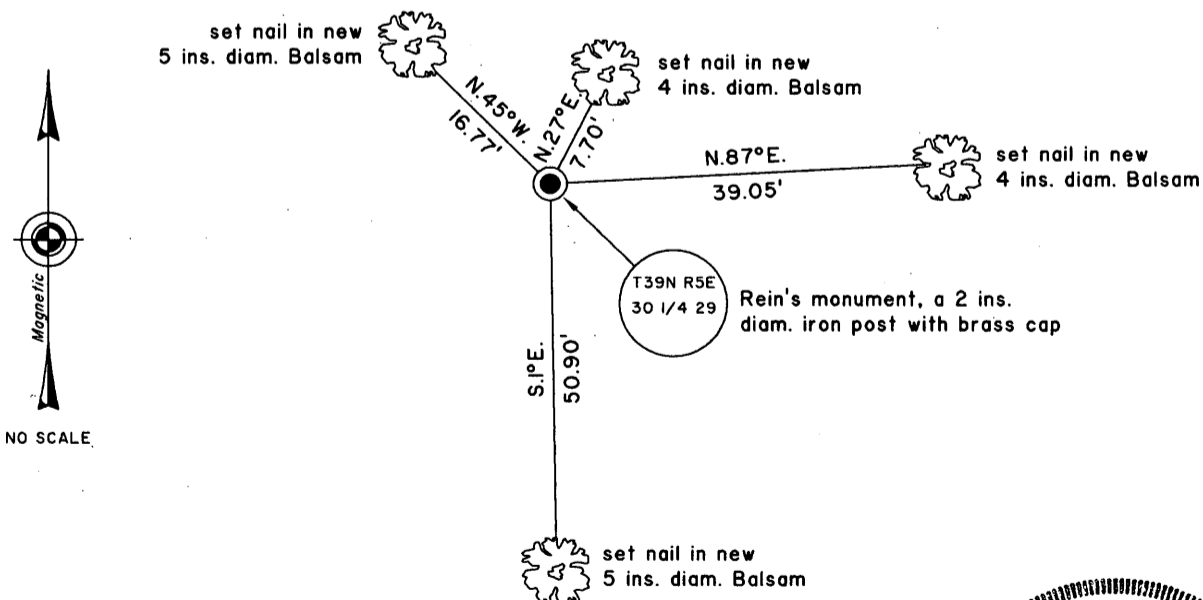
(b) (f) (g) (h) Description of monument found at this corner and if it was accepted, state all evidence (material, testimonial, occupational, plats, records, other monuments) used as a basis for accepting. If not accepted or if nothing was found, state evidence used as basis for establishing location. If re-established through lost corner proportionate methods, indicate all monuments, distances and directions used to establish. Indicate type of monument and sign post found or set.

5 May 1986: USPLS Monument Record prepared by James D. Rein and filed in the office of the Oneida County Register of Deeds. Found 2 ins. diam. iron pipe with brass cap based on previously perpetuated location.

3 June 2005: I found and accepted Rein's monument, a 2 ins. diam. iron post, projecting 24 ins. above the ground with brass cap marked as shown below. Found all of Rein's bearing trees wind-thrown, and his R. Pine stump at record bearing and distance. I established accessories as shown below and set a white plastic sign post bearing Northeast, 1 ft. dist.



(c) (d) (e) Plan view of corner with ties to at least 4 witness monuments. If in disagreement with previously established corner, show the distances between the two corners and also indicate the ties to the disputed.



(i) I, Jeffrey W. Austin, Registered Land Surveyor No. S-1885, hereby certify upon honor that the corner location on this record was determined by me or under my direction and control and that this U.S. Public Land Survey Monument Record is correct and complete to the best of my knowledge and belief.

Signature _____ Date 7 JUNE 2005



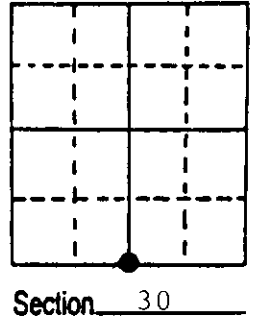
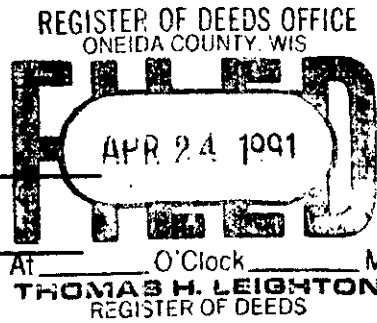
INDEX NO. T-5

3905 30 20 00

U.S. PUBLIC LAND SURVEY MONUMENT RECORD

Note: This form is intended and designed to fulfill all requirements of Wisconsin Administrative Code, Chapter A-E 7.08 U.S. Public Land Survey Monument Record (3) (a) (b) (c) (d) (e) (f) (g) (h) (i). An additional sheet may be added if necessary to conform with said requirements.

(a) Corner location: Township 39 North
 Range 5 East ~~West~~
 Town/City/Village Minocqua
 County Oneida



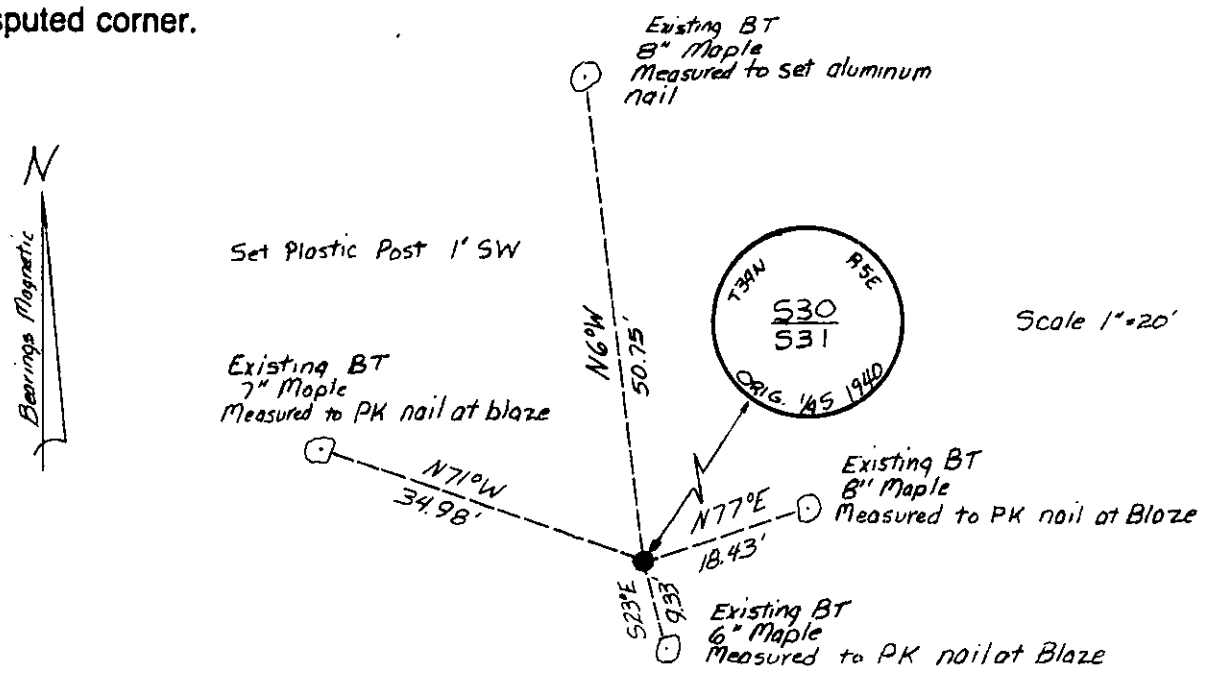
At _____ O'Clock _____ M
 THOMAS H. LEIGHTON
 REGISTER OF DEEDS

Section 30

(b) (f) (g) (h) Description of monument found at this corner and if it was accepted, state all evidence (material, testimonial, occupational, plats, records, other monuments) used as a basis for accepting. If not accepted or if nothing was found, state evidence used as basis for establishing location. If reestablished through lost corner proportionate methods, indicate all monuments, distances and directions used to establish. Indicate type of monument found or set and sign post.

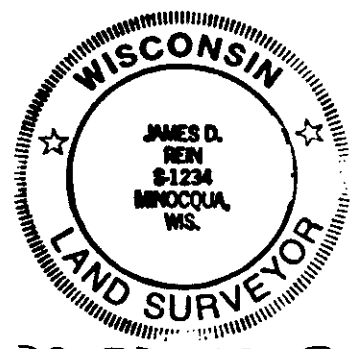
Sept. 1863; Alexander Anderson (Deputy Surveyor) set 1/4 section Post. Bearing Trees: Hemlock 10" S63°W 22 Links, Hemlock 10" N28°W 11 Links.
 April 1940; Ray H. Hall (Oneida County Survey Records) substitute County Monument for iron pipe at orig. S 1/4 of Sect. 30. Bearing Trees; W. Pine 9" S38°W .789 ch., Y. Pine 9" S22 3/4°E .789 ch. Agrees well with a stump found, S59°W 22 links.
 Jan. 1991; James D. Rein found a 2" Brass Capped I.P. Existing Bearing Trees: Maple 6" S23°E 9.33', Maple 8" N77°E 18.43', Maple 7" N71°W 34.98', Maple 8" N6°W 50.75'.

(c) (d) (e) Plan view of corner with ties to at least 4 witness monuments. If in disagreement with previously established corner, show the distances between the two corners and also indicate the ties to the disputed corner.



(i) I, James D. Rein, Registered Land Surveyor No. 1234
 (type or print name) certify that the corner location on this record was determined by me or under my direction and control and that this U.S. Public Land Survey Monument Record is correct and complete to the best of my knowledge and belief.

James D. Rein 2/23/91
 Signature Date



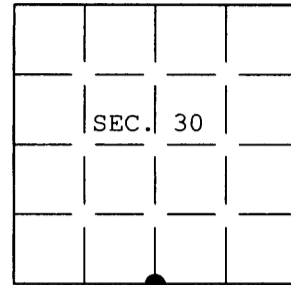
3905300020
 Stamp

Index No. V-3

U.S. PUBLIC LAND SURVEY MONUMENT RECORD

Note: This form is intended and designed to fulfill all requirements of Wisconsin Administrative Code, Chapter A-E 7.08 U.S. Public Land Survey Monument Record (3) (a) (b) (c) (d) (e) (f) (g) (h) (i). An additional sheet may be added if necessary to conform with said requirements.

(a) CORNER LOCATION: Plane Coordinates
 1/4 Cor. of Secs. 30 & 31 X:
 Township 39 North Y:
 Range 5 East of the 4th P.M. Datum:
 Town of Minocqua County of Oneida



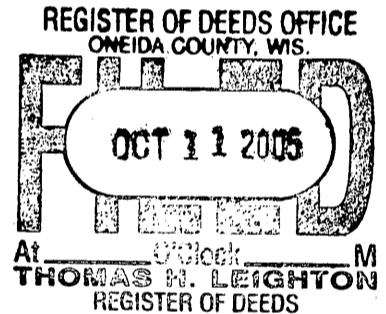
(b) HISTORY OF ORIGINAL CORNER ESTABLISHMENT

Original Surveyor: Alexander Anderson Original Accessories:
 Date of Survey: Commenced Sept. 1863 Hemlock 10" S.63°W., 22 lks.
 Completed Sept. 1863 Hemlock 10" N.28°W., 11 lks.

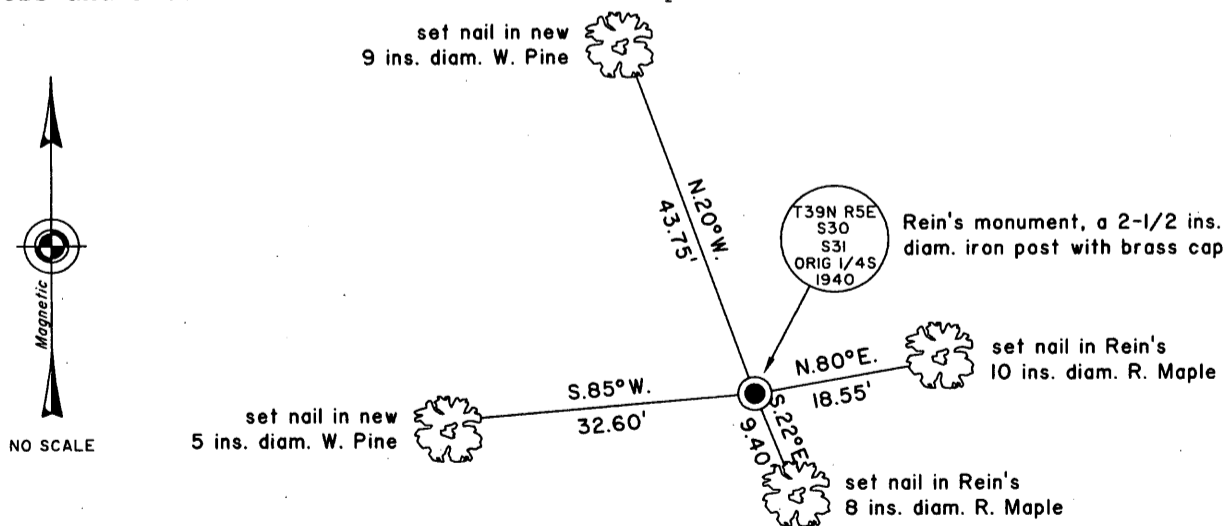
(b) (f) (g) (h) Description of monument found at this corner and if it was accepted, state all evidence (material, testimonial, occupational, plats, records, other monuments) used as a basis for accepting. If not accepted or if nothing was found, state evidence used as basis for establishing location. If re-established through lost corner proportionate methods, indicate all monuments, distances and directions used to establish. Indicate type of monument and sign post found or set.

23 Feb. 1991: USPLS Monument Record prepared by James D. Rein and filed in the office of the Oneida County Register of Deeds. Found 2 ins. diam. iron post with brass cap based on previously perpetuated location.

21 Apr. 2005: I found and accepted Rein's monument, a 2-1/2 ins. diam. iron post with brass cap projecting 10 ins. above the ground surface. Rein's Northwesterly bearing trees both dead. I found and established accessories as shown below and found a white plastic sign post bearing West, 1/2 ft. dist.



(c) (d) (e) Plan view of corner with ties to at least 4 witness monuments. If in disagreement with previously established corner, show the distances between the two corners and also indicate the ties to the disputed.



(i) I, Jeffrey W. Austin, Registered Land Surveyor No. S-1885, hereby certify upon honor that the corner location on this record was determined by me or under my direction and control and that this U.S. Public Land Survey Monument Record is correct and complete to the best of my knowledge and belief.

Signature

7 JUNE 2005
 Date



3905300020

INDEX NO. V-3