

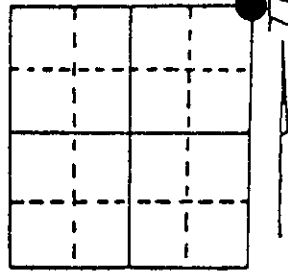
# U.S. PUBLIC LAND SURVEY MONUMENT RECORD

Note: This form is intended and designed to fulfill all requirements of Wisconsin Administrative Code, Chapter A-E 7.08 U.S. Public Land Survey Monument Record (3) (a) (b) (c) (d) (e) (f) (g) (h) (i). An additional sheet may be added if necessary to conform with said requirements.

(a) Corner location: Township 38 North  
 Range 5 East/West

Town/City/Village Minocqua

County Oneida



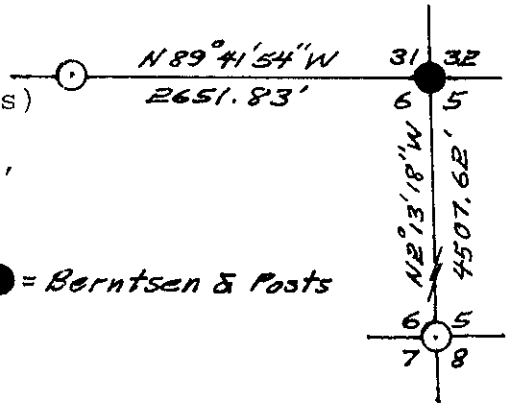
Section 6

(b) (f) (g) (h) Description of monument found at this corner and if it was accepted, state all evidence (material, testimonial, occupational, plats, records, other monuments) used as a basis for accepting. If not accepted or if nothing was found, state evidence used as basis for establishing location. If reestablished through lost corner proportionate methods, indicate all monuments, distances and directions used to establish. Indicate type of monument found or set and sign post.

Original Survey by Alfred Millard Sept. 20, 1860 - Monument: Wood Post  
 Witnesses: Y. Pine 10" N55°W 526 links - no others.

Found - 1 1/4" Iron Pipe, and two Post points next to pipe, and Halls Bt.  
 (See Ray Halls notes - County records)

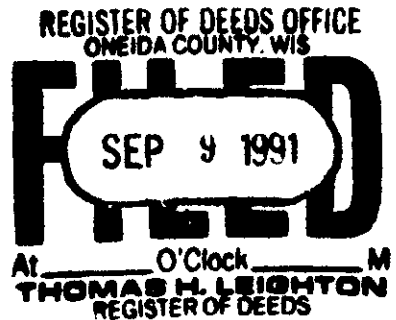
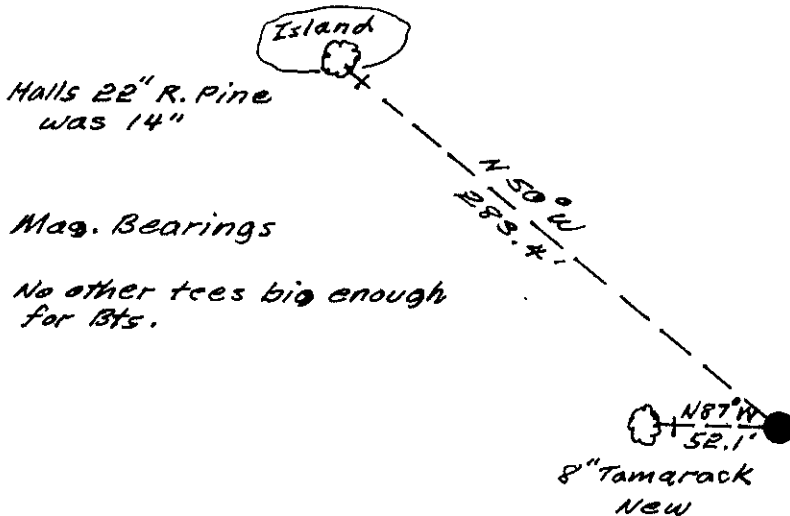
I set this corner with a county Berntsen Mon., Plastic Post and a new Wood Post.



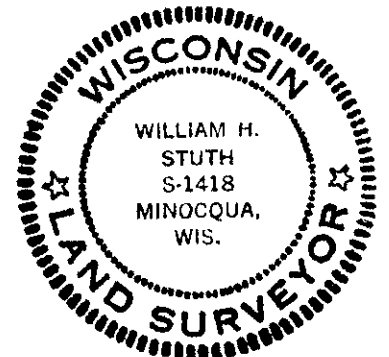
● = Berntsen & Posts

(c) (d) (e) Plan view of corner with ties to at least 4 witness monuments. If in disagreement with previously established corner, show the distances between the two corners and also indicate the ties to the disputed corner.

Note: measured to the head of 3" Concrete nails.



(i) I, William H. Stuth, RLS No. S-1418  
 (type or print name) certify that the corner location on this record was determined by me or under my direction and control and that this U.S. Public Land Survey Monument Record is correct and complete to the best of my knowledge and belief.



William H. Stuth Sept. 7, 1991  
 Signature Date

Index No. A-5

3905310000