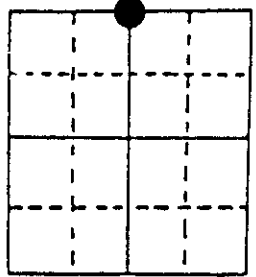


# U.S. PUBLIC LAND SURVEY MONUMENT RECORD

Note: This form is intended and designed to fulfill all requirements of Wisconsin Administrative Code, Chapter A-E 7.08 U.S. Public Land Survey Monument Record (3) (a) (b) (c) (d) (e) (f) (g) (h) (i). An additional sheet may be added if necessary to conform with said requirements.

(a) Corner location: Township 38 North  
 Range 5 East/West



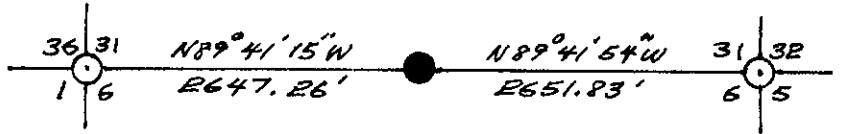
Section 6

Town/City/Village Minocqua  
 County Oneida

(b) (f) (g) (h) Description of monument found at this corner and if it was accepted, state all evidence (material, testimonial, occupational, plats, records, other monuments) used as a basis for accepting. If not accepted or if nothing was found, state evidence used as basis for establishing location. If reestablished through lost corner proportionate methods, indicate all monuments, distances and directions used to establish. Indicate type of monument found or set and sign post. Original Survey by Alfred Millard Sept 20, 1860 - Monument: Wood Post  
 Witnesses: Hemlock 12" N10° E 11 links = Hemlock 42" S35° W 31 links.

Found pipe & cap Nepco replaced Ray Halls scribed post with and two Nepco Bts.

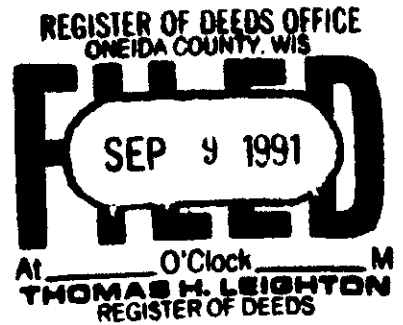
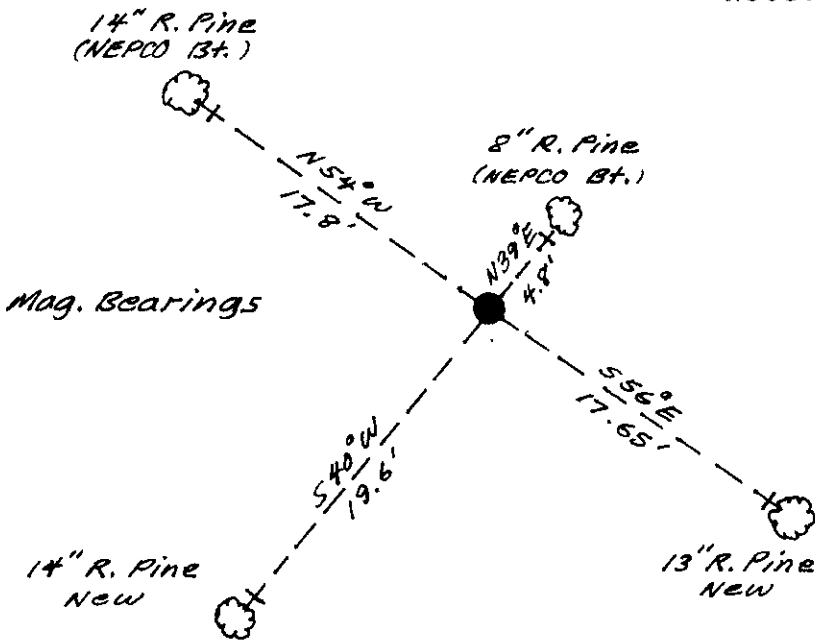
See Halls notes (County records)



● = 1 3/4" Iron Pipe with stamped Cap and Plastic Post.

(c) (d) (e) Plan view of corner with ties to at least 4 witness monuments. If in disagreement with previously established corner, show the distances between the two corners and also indicate the ties to the disputed corner.

Note: measured to the head of 3" concrete nails.



(i) I, William H. Stuth, RLS No. S-1418  
 (type or print name) certify that the corner location on this record was determined by me or under my direction and control and that this U.S. Public Land Survey Monument Record is correct and complete to the best of my knowledge and belief.

William H. Stuth Sept. 7, 1991  
 Signature Date



Index No. A-3

3905310020