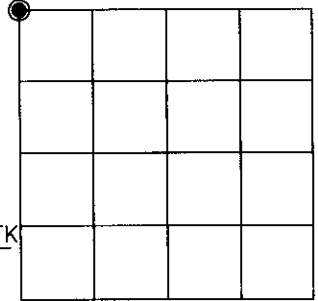


U.S. PUBLIC LAND SURVEY MONUMENT RECORD

Note: This form is intended and designed to fulfill all requirements of Wisconsin Administrative Code, Chapter A-E 7.08 U.S. Public Land Survey Monument Record (3)(a)(b)(c)(d)(e)(f)(g)(h)(i). An additional sheet may be added if necessary to conform with said requirements.

(a) CORNER LOCATION: Oneida County Coordinates
Northwest corner of Sec. 4
 Township 38 North
 Range 5 East
 Town/~~City/Township~~ Minocqua
 County of Oneida

North 230508.8007
 East 144532.3149
 Control Station # 278 S
 Latitude 45°48'31.23574"N
 Longitude 89°51'31.13730"W
 Datum NAD-83,'91 Method Direct-RTK



(b) HISTORY OF ORIGINAL CORNER ESTABLISHMENT

Original Surveyor: Alfred Millard Original B.T.'S SECTION 4
 Date of Survey: Commenced Sept. 1860
 Completed Sept. 1860

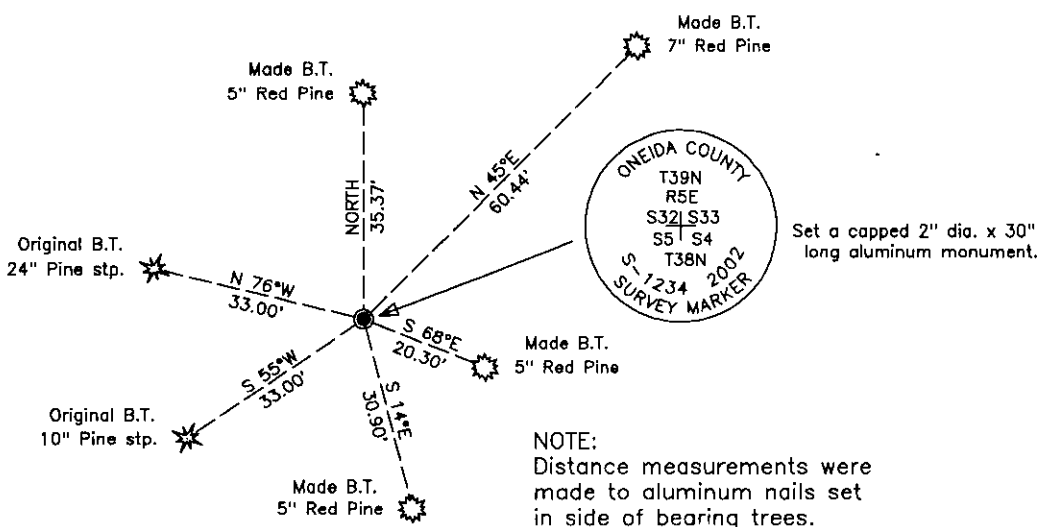
Aspen 8" N 35°E, 45 lks.
 Y. Pine 18" N 75°W, 50 lks.
 Y. Pine 8" S 55°W, 50 lks.
 W. Birch 8" S 12°E, 23 lks.

(f)(g)(h) Description of monument found at this corner and if it was accepted, state all evidence (material, testimonial, occupational, plats, records, other monuments) used as a basis for establishing location. If not accepted or if nothing was found, state evidence used as basis for establishing location. If reestablished through lost corner proportionate methods, indicate all monuments, distances and directions used to establish. Indicate type of monument and sign post found or set.

Sept. 7 and 8, 1933 – R. H. Hall, Oneida County Survey record: Set new cedar post in old stake hole 0.50 chains from each of original BT remains (pine), others cannot be found. Origs.: N75°50'W, 0.50 ch. & S55°35'W, 0.50 ch.; New – W. Pine stp. 12" S28°10'E, 0.923 ch..This corner bears N 89°50'W (true solar bearing), 40.146 chains (2649.64 feet) from the original N 1/4 Corner of Section 4.

November 12, 2002 – James D. Rein, R.L.S. No. 1234: Recovered good point of rotted post 2 in. dia. x 14 in. deep, verified by the remains of the original bearing trees as shown in plan view. This corner position bears N 89°38'10"W (Oneida County Grid bearing), 2649.42 feet from the recovered original N 1/4 Corner position of Section 4. I replace the post with a capped 2 in. dia. x 30 in. long flange bottom aluminum monument. I set a plastic county post alongside of the corner monument and made four Red Pine bearing trees as shown in the plan.

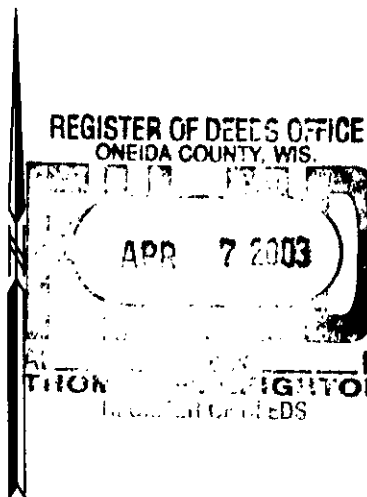
(c)(d)(e) Plan view of corner with ties to at least 4 witness monuments. If in disagreement with previously established corner, show the distance between the two corners and also indicate the ties to the disputed corner.



Bearings Magnetic

Set a capped 2" dia. x 30" long aluminum monument.

SCALE 1" = 30'



(i) I, James D. Rein, Registered Land Surveyor No. 1234, hereby certify that the corner location on this record was determined by me or under my direction and control and that this U.S. Public Land Survey Monument Record is correct and complete to the best of my knowledge and belief.

[Signature] January 17, 2003
 Signature Date

3905320000



INDEX NO. A9