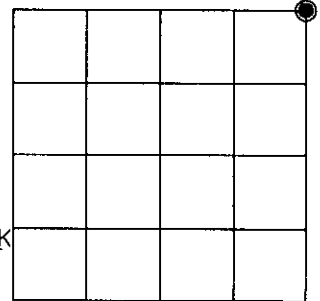


U.S. PUBLIC LAND SURVEY MONUMENT RECORD

Note: This form is intended and designed to fulfill all requirements of Wisconsin Administrative Code, Chapter A-E 7.08 U.S. Public Land Survey Monument Record (3)(a)(b)(c)(d)(e)(f)(g)(h)(i). An additional sheet may be added if necessary to conform with said requirements.

(a) CORNER LOCATION: Oneida County Coordinates
Northeast corner of Sec. 4
 Township 38 North
 Range 5 East
 Town/~~City~~/~~Village~~ Minocqua
 County of Oneida

North 230486.5264
 East 149829.4156
 Control Station # 278 S
 Latitude 45°48'31.23574"N
 Longitude 89°51'31.13730"W
 Datum NAD-83,'91 Method Direct-RTK



(b) HISTORY OF ORIGINAL CORNER ESTABLISHMENT

Original Surveyor: Alfred Millard Original B.T.'S SECTION 4
 Date of Survey: Commenced September 1860
 Completed September 1860

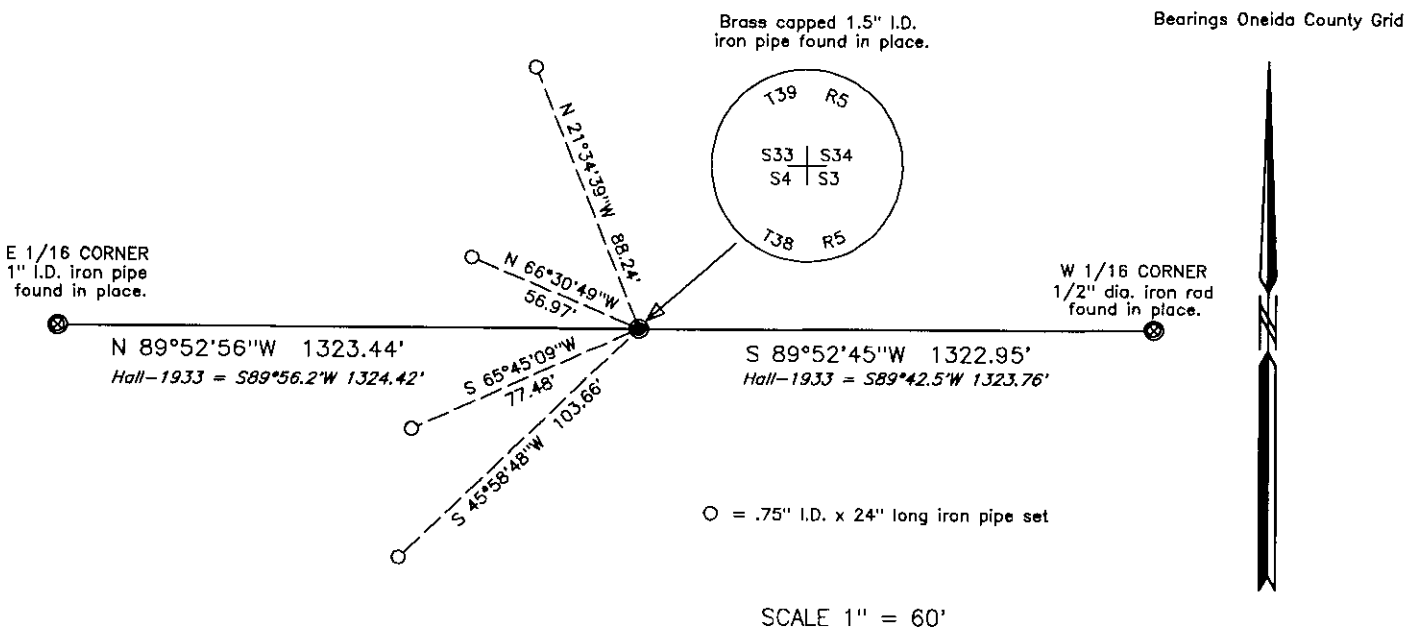
Tamarac 12" N18°W, 22 lks.
 Tamarac 12" S64°W, 8 lks.
 Spruce 10" S68°E, 14 lks.
 Spruce 12" S32°E, 8 lks.

(f)(g)(h) Description of monument found at this corner and if it was accepted, state all evidence (material, testimonial, occupational, plats, records, other monuments) used as a basis for establishing location. If not accepted or if nothing was found, state evidence used as basis for establishing location. If reestablished through lost corner proportionate methods, indicate all monuments, distances and directions used to establish. Indicate type of monument and sign post found or set.

Sept. 5, 1933 – R. H. Hall, Oneida County Survey record: Set new post in wet marsh by approx. record dist. from the 4 orig. bearings. SW stub only one in fair condition. That one has scribe marks. Nothing near for bearings. May 18, 1934, mark: W. Pine stump 10" N25°W, 1.573 chains; Y. Pine stump core 7" N80°W, 1.828 chains.

November 11, 2002 – James D. Rein, R.L.S. No. 1234: Recovered a brass capped 1.5" inside dia. iron pipe extending 1 foot above ground and the remains of a rotted 4" square Cedar post in open beaver flowage. Although there is no remaining evidence of the original bearing trees, I accept the monument as marking the original corner position because it is harmonious with Hall's record ties to the W 1/16 Cor. between Sections 3 and 34 and to the E 1/16 Cor. between Sections 3 and 34. I do not replace the monument because it is in good condition and do set a plastic county post N80°E, 0.8 feet from the corner and set four iron pipe reference monuments as shown on plan.

(c)(d)(e) Plan view of corner with ties to at least 4 witness monuments. If in disagreement with previously established corner, show the distance between the two corners and also indicate the ties to the disputed corner.



(i) I, James D. Rein, Registered Land Surveyor No. 1234, hereby certify that the corner location on this record was determined by me or under my direction and control and that this U.S. Public Land Survey Monument Record is correct and complete to the best of my knowledge and belief.

[Signature] January 17, 2003
 Signature Date



INDEX NO. 4/13

3805330000