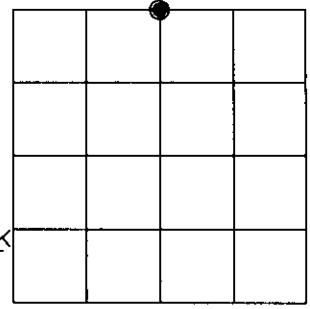


U.S. PUBLIC LAND SURVEY MONUMENT RECORD

Note: This form is intended and designed to fulfill all requirements of Wisconsin Administrative Code, Chapter A-E 7.08 U.S. Public Land Survey Monument Record (3)(a)(b)(c)(d)(e)(f)(g)(h)(i). An additional sheet may be added if necessary to conform with said requirements.

(a) CORNER LOCATION: Oneida County Coordinates
North 1/4 corner of Sec. 4
 Township 38 North
 Range 5 East
 Town/~~City/Village~~ Minocqua
 County of Oneida

North 230491.9758
 East 147181.6766
 Control Station # 278 S
 Latitude 45°48'31.23574"N
 Longitude 89°51'31.13730"W
 Datum NAD-83,'91 Method Direct-RTK



(b) HISTORY OF ORIGINAL CORNER ESTABLISHMENT

Original Surveyor: Alfred Millard Original B.T.'S SECTION 4
 Date of Survey: Commenced Sept. 1860 Y. Pine 10" N 48°W, 14 lks.
 Completed Sept. 1860 Y. Pine 15" S 70°E, 4lks.

(f)(g)(h) Description of monument found at this corner and if it was accepted, state all evidence (material, testimonial, occupational, plats, records, other monuments) used as a basis for establishing location. If not accepted or if nothing was found, state evidence used as basis for establishing location. If reestablished through lost corner proportionate methods, indicate all monuments, distances and directions used to establish. Indicate type of monument and sign post found or set.

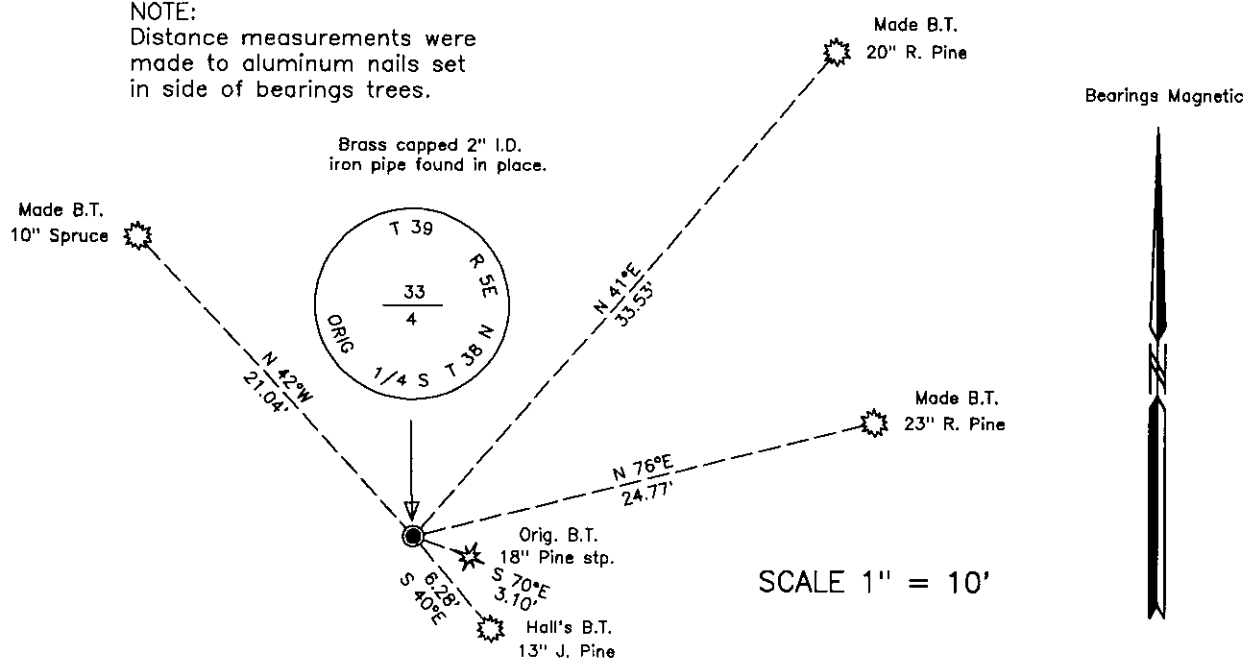
Sept. 6, 1933 – R. H. Hall, Oneida County Survey record: Set pitch post in old stake hole where we found two old posts down. The two stumps agree OK for course and almost for distance – badly burned. Originals: N 51°W, 0.155 chains; S 67°E, 0.047 chains. Made new bearing trees: Jack 6" S 32 3/4°E, 0.098 chains; Jack 8" S 52 3/4°W, 0.36 chains; and Jack 8" N 17 3/4°E, 0.336 chains.

December 18, 1936 – Hall & Swearinger, Oneida County record: P.M. Set County Monument about 7" exposed at Orig. S 1/4, 33-39-5.


November 11, 2002 – James D. Rein, R.L.S. No. 1234: Recovered 2" I.D. iron pipe with plumbers brass cap extending 5" above ground level on an island knoll in swamp. Evidence remains of the original government southeast bearing tree and Hall's southeast bearing tree as shown in plan. I set a plastic county post 0.8 feet North of the corner and we made additional bearing trees as shown in plan.

(c)(d)(e) Plan view of corner with ties to at least 4 witness monuments. If in disagreement with previously established corner, show the distance between the two corners and also indicate the ties to the disputed corner.

NOTE:
 Distance measurements were made to aluminum nails set in side of bearing trees.



(i) I, James D. Rein, Registered Land Surveyor No. 1234, hereby certify that the corner location on this record was determined by me or under my direction and control and that this U.S. Public Land Survey Monument Record is correct and complete to the best of my knowledge and belief.

 January 17, 2003
 Signature Date



INDEX NO. A 11

3905330020