

# U.S. PUBLIC LAND SURVEY MONUMENT RECORD

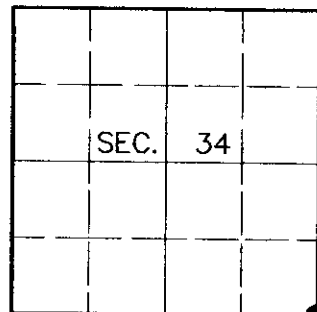
Note: This form is intended and designed to fulfill all requirements of Wisconsin Administrative Code, Chapter A-E 7.08, U.S. Public Land Survey Monument Record (3)(a)(b)(c)(d)(e)(f)(g)(h)(i). An additional sheet may be added if necessary to conform with said requirements.

**(a) CORNER LOCATION**

Southeast Corner of Section 34  
 Township 39 North  
 Range 5 East  
 Town of Minocqua

State Plane Coordinates

X  
 Y  
 Datum  
 County of Oneida



**(b) HISTORY OF ORIGINAL CORNER ESTABLISHMENT**

Original Surveyor: Alfred Millard

Date of Survey: Commenced Sept., 1860  
 Completed Sept., 1860

Original Bearing Trees:

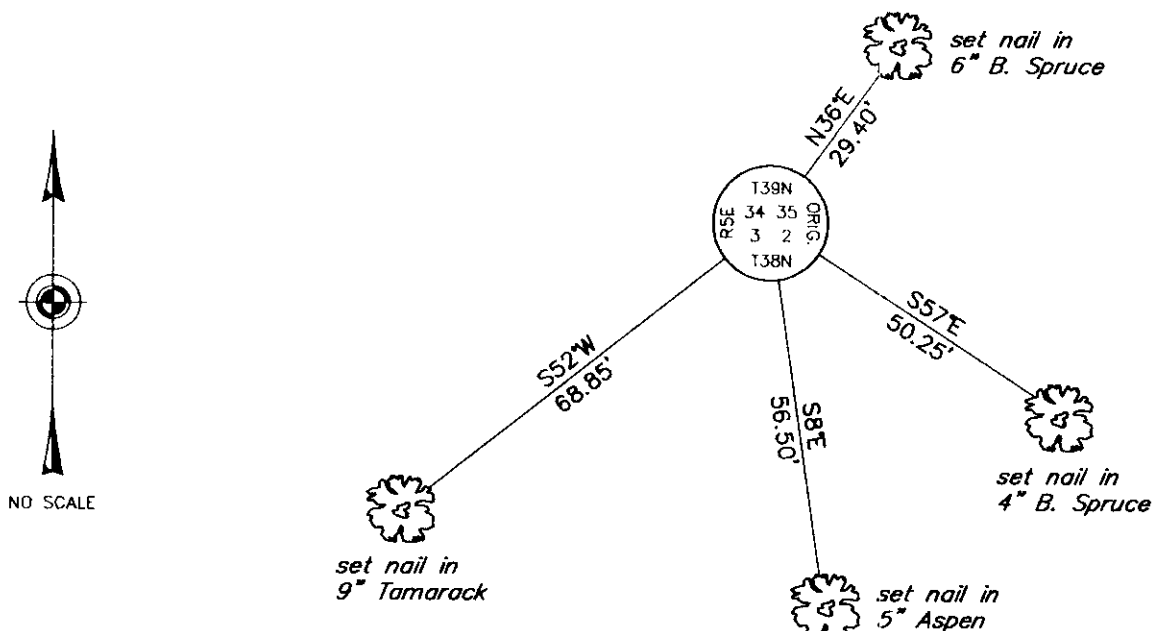
Spruce 8 N58°E, 20 links  
 Spruce 18 N52°W, 15 links  
 Spruce 8 S45°W, 13 links  
 Y. Pine 8 S55°E, 22 links

(b)(f)(g)(h) Description of monument found at this corner and if it was accepted, state all evidence (material, testimonial, occupational, plats, records, other monuments) used as a basis for accepting. If not accepted or if nothing was found, state evidence used as basis for establishing location. If reestablished through lost corner proportionate methods, indicate all monuments, distances and directions used to establish. Indicate type of monument and sign post found or set.


July 7, 1933: As detailed on page 148 of Hall's notes, Ray Hall indicates at 80.382 he fell .069 N of old post hole agreeing reasonably well with remains of 4 orig. brng. The Pine stub has all marks OK. SE Spruce down, boxing plain. Others? Set dry scribed cedar post in hole - nothing for new bearings. Originals read: Y.P. S54-20E, .21; SP. N61-30E, .187; do S52-40W, .125; do N51-45W, .155.

September 25, 2000: I found and accepted a 2-1/2" dia. iron pipe with 3" dia. brass cap 35" above grade and marked as shown below. I found Millard's R. Pine stump, marks still as plain as Hall described them bearing S49°E, 14.2 feet. I established accessories as shown below and set a plastic sign post Northwest, 1 foot.

(c)(d)(e) Plan view of corner with ties to at least 4 witness monuments. If in disagreement with previously established corner, show the distances between the two corners and also indicate the ties to the disputed corner.



(i) I, Jeffrey W. Austin, Registered Land Surveyor S-1885, hereby certify that the corner location on this record was determined by me or under my direction and control and that this U.S. Public Land Survey Monument Record is correct and complete to the best of my knowledge and belief.

Signature:  Date: 1-23-2001



INDEX NO. Z-17

3905 340000