

U.S. PUBLIC LAND SURVEY MONUMENT RECORD

NOTE: This form is intended and designed to fulfill all requirements of Wisconsin Administrative Code, Chapter A-E 7.08 U.S. Public Land Survey Monument Record. An additional sheet may be added if necessary to conform with said requirements.

CORNER LOCATION

Quarter Corner common to Sections 34 and 35
Township 39 North, Range 5 East of the 4th P.M.
Town of Minocqua, Oneida County, Wisconsin

CORNER ID:
3905342000

| | | | | | |
|----|----|----|----|----|----|
| 6 | 5 | 4 | 3 | 2 | 1 |
| 7 | 8 | 9 | 10 | 11 | 12 |
| 18 | 17 | 16 | 15 | 14 | 13 |
| 19 | 20 | 21 | 22 | 23 | 24 |
| 30 | 29 | 28 | 27 | 26 | 25 |
| 31 | 32 | 33 | 34 | 35 | 36 |

T39N - R5E

HISTORY OF ORIGINAL CORNER ESTABLISHMENT

ORIGINAL SURVEYOR: Anderson, Alex
DATE OF SURVEY: September 1863
ORIGINAL ACCESSORIES: At 40.00 ch, set quarter post
7" Tamarac, N30°E, 22 lks
5" Tamarac, N24°W, 11 lks

COORDINATES:
Oneida County, NAD 83(2011)
N: 233139.47
E: 155151.04

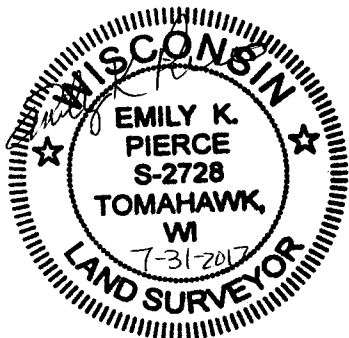
DESCRIPTION OF MONUMENT FOUND AT THIS CORNER AND IF IT WAS ACCEPTED, STATE ALL EVIDENCE MATERIAL, TESTIMONIAL, OCCUPATIONAL, PLATS, RECORDS, OTHER MONUMENTS USED AS A BASIS FOR ACCEPTING. IF NOT ACCEPTED OR IF NOTHING WAS FOUND, STATE EVIDENCE USED AS BASIS FOR ESTABLISHING LOCATION. IF RE-ESTABLISHED THROUGH LOST CORNER PROPORTIONATE METHODS, INDICATE ALL MONUMENTS, DISTANCES AND DIRECTIONS USED TO ESTABLISH. INDICATE TYPE OF MONUMENT AND SIGN POST FOUND OR SET.

July 8, 2017, Jeff Austin visited corner location and searched large area, finding no evidence. Many tamarack and spruce standing dead, but did not find any marks or evidence from original GLO survey. Computed single proportion between the NE and SE corners of section 34. This location fits well with a call to the highland north of the corner location measured to be 663.91 feet (GLO 10 ch.). Accepted single proportion as corner location and set a 2.5" x 60" aluminum pipe with a 3.25" Oneida County aluminum cap at the corner location and a white vinyl sign post 1 foot northwest. Set nails and signs in trees as accessories to the corner and measured as shown below.

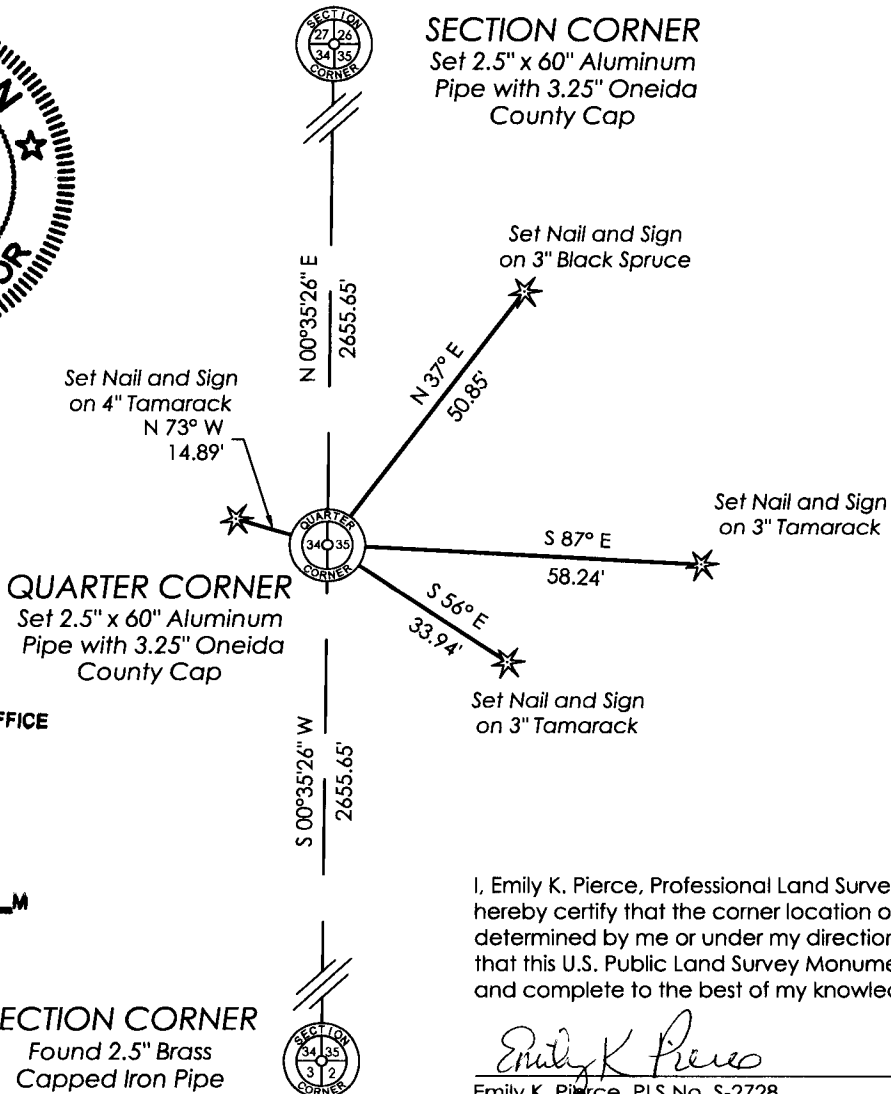
The coordinate value shown has been verified by at least one of the following methods: 1) comparison to a previously GPS determined published value; 2) the value is the average of two or more GPS observations at a markedly different time; 3) one or more distances were measured back to the GPS observed corner from temporary GPS observed offset locations.

PLAN VIEW OF CORNER WITH TIES TO AT LEAST 4 WITNESS MONUMENTS. IF IN DISAGREEMENT WITH PREVIOUSLY ESTABLISHED CORNER, SHOW THE DISTANCES BETWEEN THE TWO CORNERS AND ALSO INDICATE THE TIES TO THE DISPUTED.

SCALE: 1" = 30'
Bearings Oneida County Grid



SECTION CORNER
Set 2.5" x 60" Aluminum Pipe with 3.25" Oneida County Cap



REGISTER OF DEEDS OFFICE
ONEIDA COUNTY
FILED

AUG 10 2017

AT O'CLOCK
KYLE J. FRANSON
REGISTER OF DEEDS

SECTION CORNER
Found 2.5" Brass Capped Iron Pipe



I, Emily K. Pierce, Professional Land Surveyor No. S-2728, hereby certify that the corner location on this record was determined by me or under my direction and control and that this U.S. Public Land Survey Monument Record is correct and complete to the best of my knowledge and belief.

Emily K. Pierce
Emily K. Pierce, PLS No. S-2728
STEIGERWALDT LAND SURVEYING, LLC

X-17