

This form is intended to fulfill the requirements of Chapter A-E7.08 (3)(a) thru (i) U.S. Public Land Survey Monument Location Record, Wisconsin Administrative Code. Use the reverse side of form for continuation.

U.S. PUBLIC LAND SURVEY MONUMENT LOCATION RECORD

USPLS CORNER: NW SECTION: 1 TOWNSHIP: 38 NORTH RANGE: 5 EAST
 NAME OF WATERWAY FOR M.C. CORNER : N/A SECTION LINE: N/A
 (CITY)(VILLAGE)(TOWN) OF: MINOCQUA COUNTY OF: ONEIDA

Description of monument found or placed and all other evidence used as the basis for monument location; including monuments and measurements required if the corner location was reestablished by lost corner proportionate methods. Also indicate name of the original surveyor, original survey date and the corner monument, bearing trees, witness or other reference monuments established, including measured bearing and distance ties, from available survey records.

Found and accepted an old 2" dia. iron pipe with stamped pipe cap 5" above grade; also an old 3.5"x4.5" pointed top and scribed wood marker post 5" SW and a standard white polyT marker post 9" North. Corner falls in brushy woods about 18' North of the centerline of an 18' wide gravelled roadway named Ottertail Lane and bearing S70°W at west end of a curve East to the right.

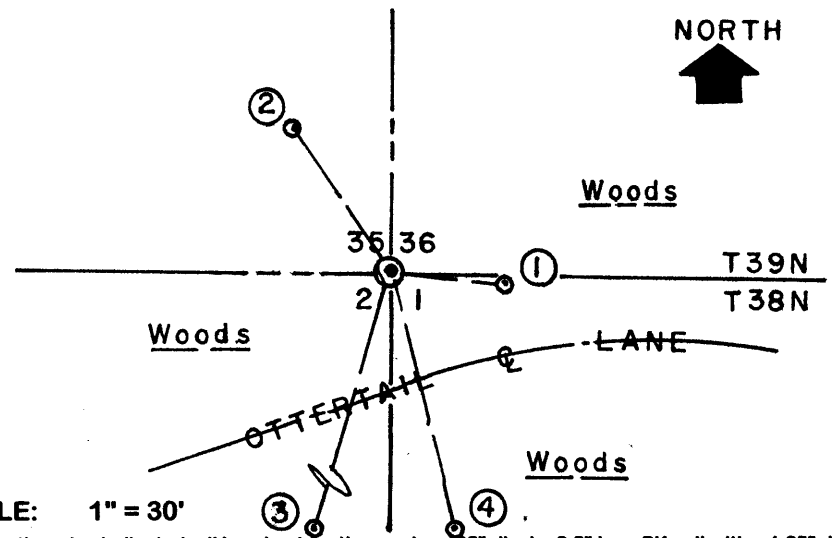
In 1860 Alfred Millard/GLO set a wood post as the original corner and noted OBTs: a 20" Py N12°E 66 lks, a 12" Pw S20°E, 50 links, a 20" Py S45°W 56 links and an 18' Py N55°W 154 links; all are now obliterated beyond recovery usage.

In 1933, H.C. Hall set a square wood post at the corner from GLO BTs and marked new BTs: a 22" Pw S16.5°E 0.642 chains, I found OK as a 28" Pw S15°E, and a 14" Pj S43°20'E 0.763 chains, now gone, all per Page 147 of Hall's Book 1 in Oneida County survey records.

In February 1997, Thomas Boettcher/RLS 1763, notes a 2" capped iron pipe found in place at this corner per plat of survey filed as C-1377 in Oneida County survey records.

This recovery completed July 20, 2004; there were no witnesses other than vehicular drive-bys.

Plan view map of monument location with bearing and distance ties to a minimum of four(4) described witness or reference monuments of concrete, natural stone, iron, live bearing trees or equivalent material. If applicable, also show a minimum of two(2) bearing and distance ties to any other monument found and not accepted; including the bearing and distance from the accepted monument.

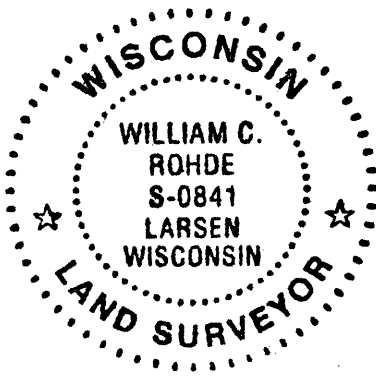


- WITNESS MONUMENT TIES:**
- ① Older 8" Mr BT with faint lower blaze scar and upper blaze fissure nearly shut, S85°E 17.65'.
 - ② New 8" Pw BT N55°W 27.05'.
 - ③ New 13" Pw BT S16°W 63.14'.
 - ④ Older 28" Pw BT (by Hall) with upper & lower blazes shut but shallow scars plain, S15°E 42.16'; I nailed a standard BT sign to upper face.
- I flagged other BTs, corner pipe and marker posts blaze orange.

SCALE: 1" = 30'

Unless otherwise indicated, all bearing tree ties are to a .25" dia. by 2.5" long PK nail with a 1.25" dia. steel washer driven into unblazed right face and a .25" dia. by 2.5" long PK nail with a 2" dia. steel washer stamped BT is also driven into unblazed face of bearing tree at DBH; the basis for measured bearings is by compass to nearest degree and all tie distances are measured horizontal by steel tape corrected to nearest 1/100th feet at standard temperature of 68° F.

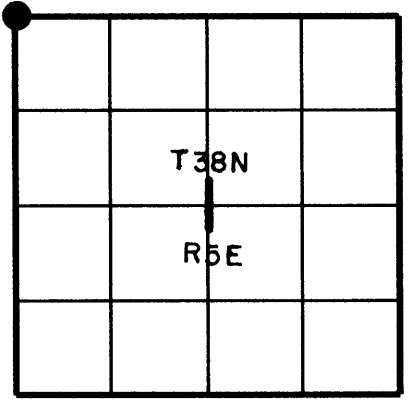
RLS SEAL:



LAND SURVEYOR CERTIFICATE:

I, William C. Rohde, hereby certify that I am duly licensed as a Professional Land Surveyor in the State of Wisconsin; that this USPLS monument location was determined by me and/or under my direct supervision and control; and that this U.S. Public Land Survey Monument Location Record is true and correct to the best of my knowledge and belief.

Signed *William C. Rohde*
 William C. Rohde RLS 841



SECTION LOCATION MAP
 INDEX NO. 2 21

3905350000