

U.S. PUBLIC LAND SURVEY MONUMENT RECORD

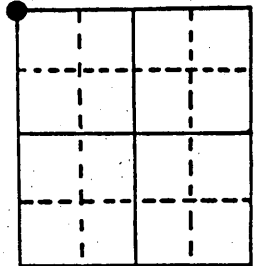
Note: This form is intended and designed to fulfill all requirements of Wisconsin Administrative Code, Chapter A-E 5.02, U.S. Public Land Survey Monument Record (3) (a) (b) (c) (d) (e) (f) (g) (h) (i). An additional sheet may be added if necessary to conform with said requirements.

(a) Corner location: Township 38 North

Range 6 East/West

Town/City/Village HAZELHURST

County ONEIDA



Section 6

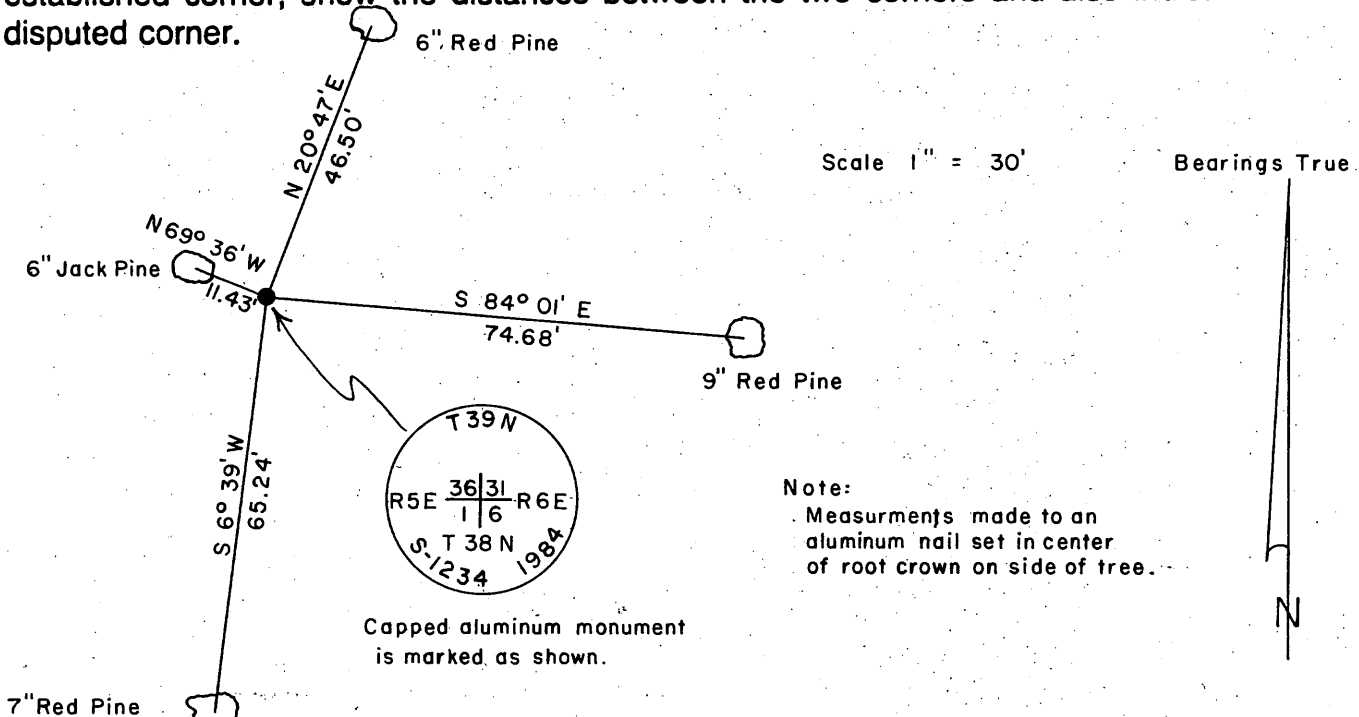
(b) (f) (g) (h) Description of monument found at this corner and if it was accepted, state all evidence (material, testimonial, occupational, plats, records, other monuments) used as a basis for accepting. If not accepted or if nothing was found, state evidence used as basis for establishing location. If reestablished through lost corner proportionate methods, indicate all monuments, distances and directions used to establish.

Sept. 20 1860—Alfred Millard, Deputy Surveyor. Set post at corner.
Original bearing trees: Y. Pine 9", S39°W, 109 links; Y. Pine 10" S43°E, 145 links; Y. Pine 18" N25°W, 196 links; Y. Pine 10" N12°E, 151 links.

June 21, 1933—Ray H. Hall, Deputy County Surveyor - Check post found at original corner. Record remains of 4 original bearings close within one link. Move post West 10" and mark Y. Pine 10" N40°-09"E, .98 ch.

Dec. 10 1984—James D. Rein RLS - Found a R.R. rail 4 feet long extending 4 inches above ground and old scribed post. Hall's 24" Red Pine stump (recently logged) bears N40°E, 65.0 feet. I replace the rail with a capped 2" dia. x 30" long Magnetic aluminum monument extending six inches above ground. Reset rail now as a guard up two feet S40°E, 1.8 feet and a new Cedar Post N40°W, 1½ feet from corner.
Made new BTs as shown below in plan view.

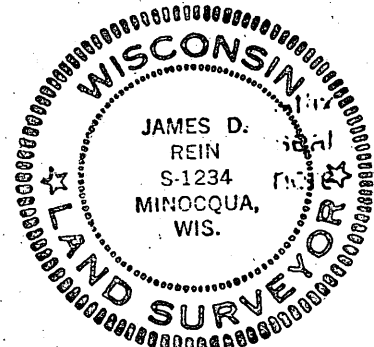
(c) (d) (e) Plan view of corner with ties to at least 4 witness monuments. If in disagreement with previously established corner, show the distances between the two corners and also indicate the ties to the disputed corner.



Note: Measurements made to an aluminum nail set in center of root crown on side of tree.

(i) JAMES D. REIN, Reg. Land Surveyor No. S-1234
(type or print name) certify that the corner location on this record was determined by me or under my direction and control and that this U.S. Public Land Survey Monument Record is correct and complete to the best of my knowledge and belief.

James D. Rein Signature Jan 31st 1985 Date



Index No. A-1

3905360000

Stock No. 26273

REGISTER OF DEEDS OFFICE
ONEIDA COUNTY, WIS.
JUL 1 1 1986
8:00 O'clock
DORIS VERAGE KUEHN
REGISTER OF DEEDS

U.S. PUBLIC LAND SURVEY MONUMENT RECORD

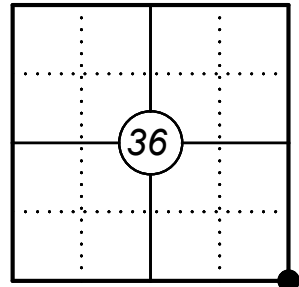
This form is intended and designed to fulfill all requirements of Wisconsin Administrative Code, Chapter A-E 7.08 U.S. Public Land Survey Monument Record (3) (a)(b)(c)(d)(e)(f)(g)(h)(i). An additional sheet may be added if necessary to confirm with said requirements.

Oneida County
Land Information Office
Filed
7/17/2025

(a) Corner Location:

SE Corner Section 36
Township 39 North
Range 5 East
Town of Minocqua
County of Oneida

Corner ID: 3905360000



(b) History of Original Corner:

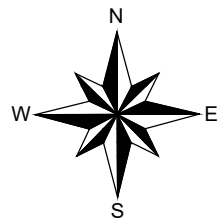
For corner history, see previous U.S. Public Land Survey Monument Record by James D. Rein, dated July 31, 1985.

(f)(g)(h) Description of monument found at this corner and if it was accepted, state all evidence (material, testimonial, occupational, plats, records, other monuments) used as a basis for establishing location. If reestablishing through lost corner proportionate methods, indicate all monuments, distances, and directions used to establish. Indicate type of monument and sign post found or set.

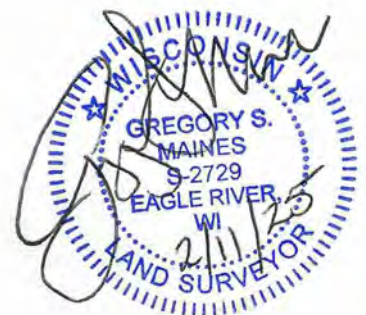
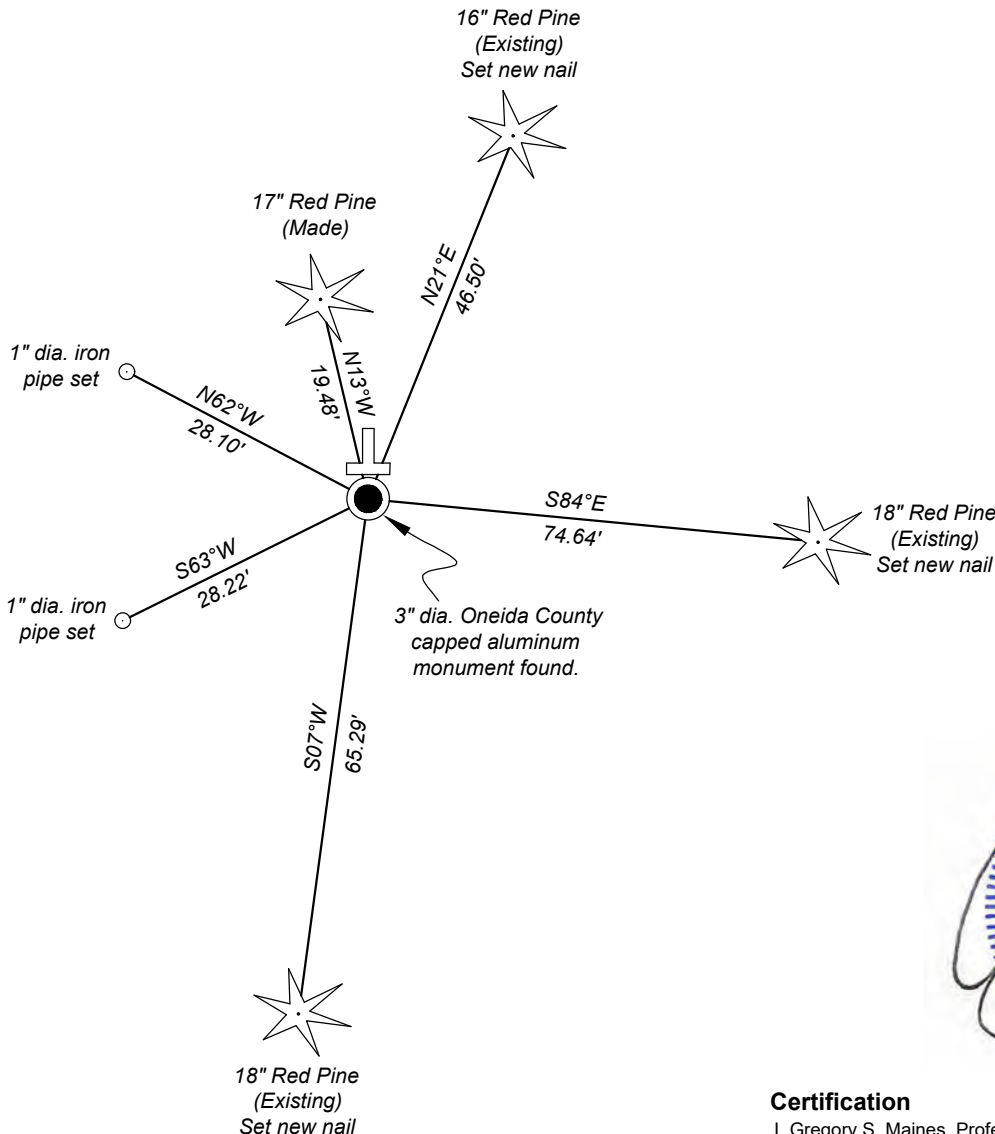
06/21/2024 - I found a 3" dia. Oneida County capped aluminum monument at the corner location as well as three existing bearing trees. I set two iron pipes and made one additional bearing tree to witness the corner as shown below.

(c)(d)(e) Plan view of corner with ties to at least four witnesses. If in disagreement with previously established corner, show the distances between the two corners and also indicate the tie to the disputed corner.

Magnetic Bearings
Not to scale



- * Vinyl "T" post 0.8' north of corner.
- * Distances to bearing trees are to nail in side.



Certification

I, Gregory S. Maines, Professional Land Surveyor No. 2729, hereby certify that the corner location on this record was referenced by me or under my direction and control and that this U.S. Public Land Survey Monument Record is complete to the best of my knowledge and belief. REF: 2024152

Index No.: