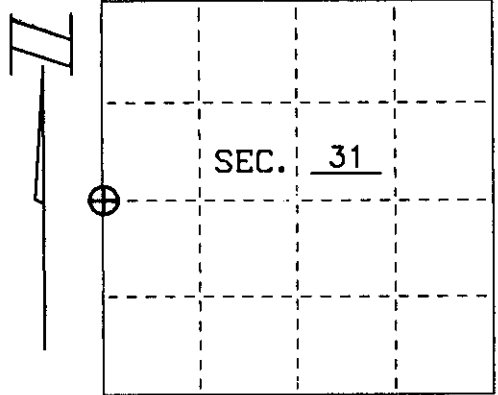


**U. S. PUBLIC LAND SURVEY MONUMENT RECORD**

Note: This form is intended and designed to fulfill all requirements of Wisconsin Administrative Code, Chapter A-E 7.08 U.S. Public Land Survey Monument Record (3)(a)(b)(c)(d)(e)(f)(g)(h)(i). An additional sheet may be added if necessary to conform with said requirements.

(a) CORNER LOCATION Township 39 North  
Range 6 East

Town of Minocqua  
County of Oneida, State of Wisconsin



(b)(f)(g)(h) Description of monument found at this corner and if it was accepted, state all evidence (material, testimonial, occupational, plats, records, other monuments) used as a basis for accepting. If not accepted or if nothing was found, state evidence used as basis for establishing location, if reestablished through lost corner proportionate methods, indicate all monuments, distances and directions used to establish. Indicate type of monument and sign post found or set.

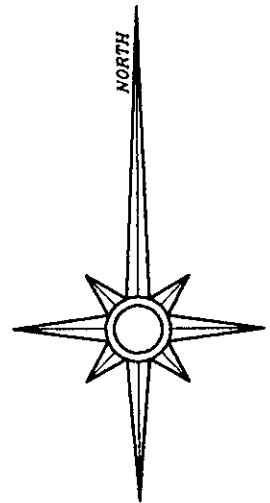
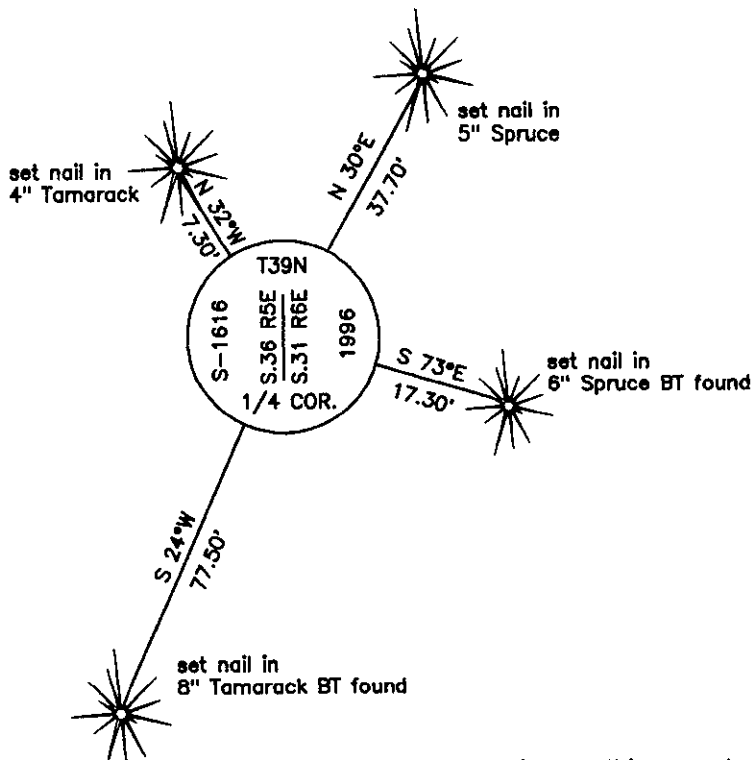
Sept., 1860 Alfred Millard, Original Surveyor of Township.

Original Bearing Trees:  
Tamarack 4" S 05°E, 50lks  
Tamarack 5" N 65°W, 72lks

June 26, 1933 R.H. Hall set Tamarack post at proportionate location between Section corners - 39.945 chains and established the following bearing trees:  
BT's: Spruce 3" S 72°40'E, .258ch.  
Tamarack 3" S 24°08'W, 1.168ch.

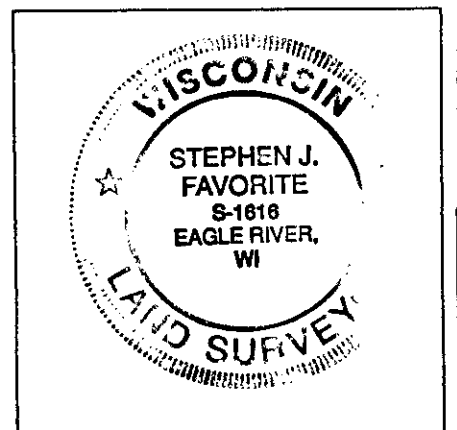
July 9, 1996 I found Halls post and replaced it with a 2-1/2" diameter x 30" long Oneida County aluminum capped monument. I also found Halls bearing trees and made two new bearing trees as shown below, set carsonite sign post North, 1 foot.

(c)(d)(e) Plan view of corner with ties to at least 4 witness monuments. If in disagreement with previously established corner, show the distances between the two corners and also indicate the ties to the disputed.



(i) I, Stephen J. Favorite, hereby certify that the corner location on this record was determined by me or under my direction and control and that this U.S. Public Land Survey Monument Record is correct and complete to the best of my knowledge and belief.

Stephen J. Favorite 12/9/96  
Stephen J. Favorite Date  
R.L.S. #S-1616



INDEX NO. X-1

3905362000