

Stock No. 26273

U. S. PUBLIC LAND SURVEY MONUMENT RECORD

INSTRUCTIONS:

- (a) Identify the corner by reference to the U.S. public land survey system.

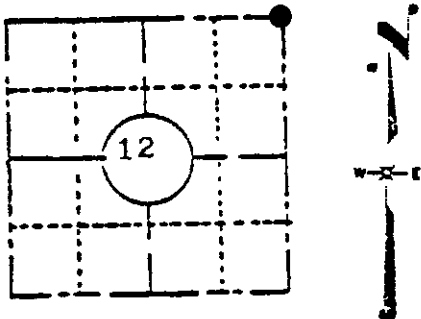
This record shall show the location of the corner and shall include all of the following nine elements (a through i).

This corner was originally established in the course of the survey of T39N, R7E by Alexander Anderson, Deputy Surveyor. Survey was commenced Sept. 21, 1855 and completed Oct. 1, 1863.

Original bearing trees: 10" J. Pine S121, 41lks
 14" Y. Pine N70W, 30lks
 14" Y. Pine N63E, 23lks
 14" Y. Pine S71E, 25lks

Original Corner: "Set post cor to Sects. 6, 7, 1 & 12."

Sec 12, T39N, R6E ok map 5/22/90



LOCATION SKETCH

(Location of landmark indicated by "●")

Compared with all record data and accepted as correct.

Robert H. Winat

Robert H. Winat, Oneida Co. Surv.
 15 March 1984

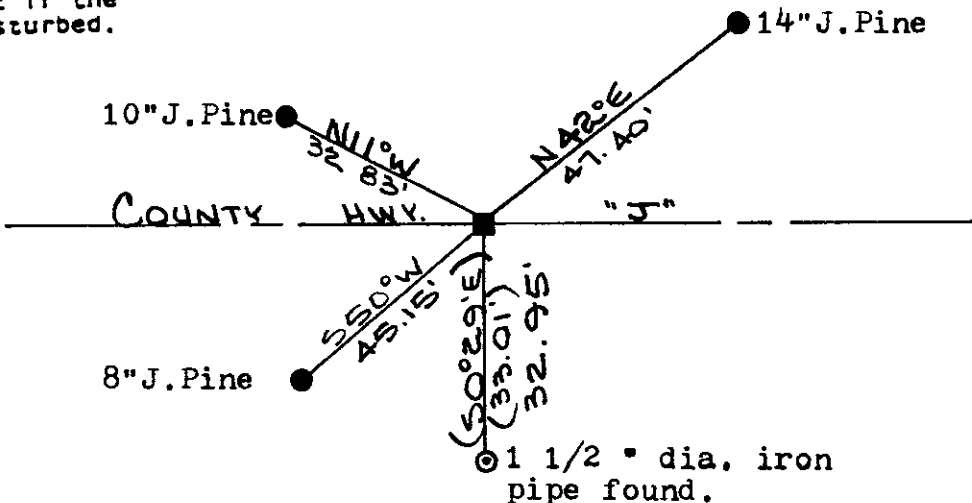
- (b) Describe any record evidence, monument evidence, occupational evidence, testimonial evidence or any other material evidence you considered, and whether the monument was found or placed.

Found 1/2" Square iron rod in centerline of County Hwy. "J" witnessed by a 14' J.Pine N21W, 37.8 feet, a 10" J.Pine N11W, 32.8 feet and a 14" J.Pine N42E, 47.8 feet. Monument was also referenced to a Certified survey by J.H. Fisher as bearing N0°29'W, 33.01 feet from a 1 1/2" Iron pipe. I recovered said iron pipe and found the true distance to be 32.95 feet. (See plan view below) I found no evidence of the original corner or bearing trees.

- (c) In the plan view drawing below, provide reference ties to at least 4 witness monuments, or, if the location is within a municipality, to at least 2 witness monuments. (Witness monuments shall be made of concrete, natural stone, iron or other equally durable material, except wood.) Describe witness monuments.

- (d) Show a plan view drawing depicting the relevant monuments and reference ties which is sufficient in detail to enable accurate relocation of the corner monument if the corner monument is disturbed. Indicate north.

● = Railroad spike in face of witness tree as indicated below.
 () = Previously recorded bearing or distance.



E-25

(e) Describe any material discrepancy between the location of the corner as restored or reestablished and the location of that corner as previously restored or reestablished by distance and direction. Show the discrepancy on the plan view drawing under (d), above. Show the distances between the corner as previously restored or reestablished and (1) the corner as restored or reestablished, and (2) to at least 2 of the witness monuments shown on the drawing in (d), above.

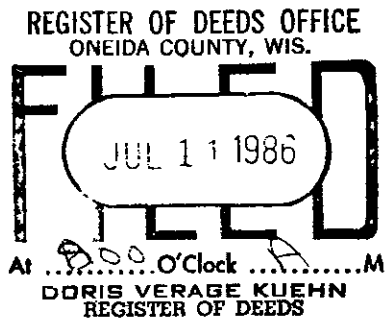
See item (d)

(f) Was the corner restored through acceptance of (1) an obliterated evidence location, or, (2) a found perpetuated location?

I accepted the found perpetuated location of this corner.

(g&h) Was the corner reestablished through lost corner proportionate methods? If so, show the method, including the directions and distances to other public land survey corners used as evidence or used for proportioning in determining the corner location?

See item (f)

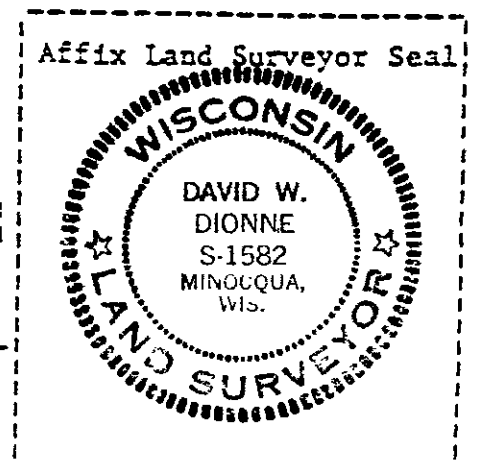


David W. Dionne R.L.S. 1582

(i) I, (type or print name) certify that the corner location shown on this record was determined by me or under my direction and control and that this U.S. Public Land Survey Monument Record is correct and complete to the best of my knowledge and belief.

Signature David W. Dionne

Date 7/27/83



U.S. PUBLIC LAND SURVEY MONUMENT RECORD

REGISTER OF DEEDS OFFICE
ONEIDA COUNTY
FILED

Note: This form is intended and designed to fulfill all requirements of the Wisconsin Administrative Code, Chapter A-E 7.08 U.S. Public Land Monument Record (3)(a)(b)(c)(d)(e)(f)(g)(h)(i). An additional sheet may be added if necessary to conform with said requirements.

JUL 08 2019

KYLE J. FRANSON
REGISTER OF DEEDS

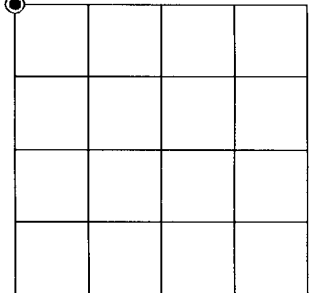
(a) CORNER LOCATION:

Northwest Corner of Section 7
Township 39 North
Range 7 East
Town of Woodruff
County of Oneida

North:
East:
Datum:
GNSS Method:
GNSS Control:

(RECORDING AREA)

SECTION 7



(b) HISTORY OF ORIGINAL CORNER ESTABLISHMENT

Original Surveyor:
Date of Survey: Commenced
Completed
Original B.T.'S

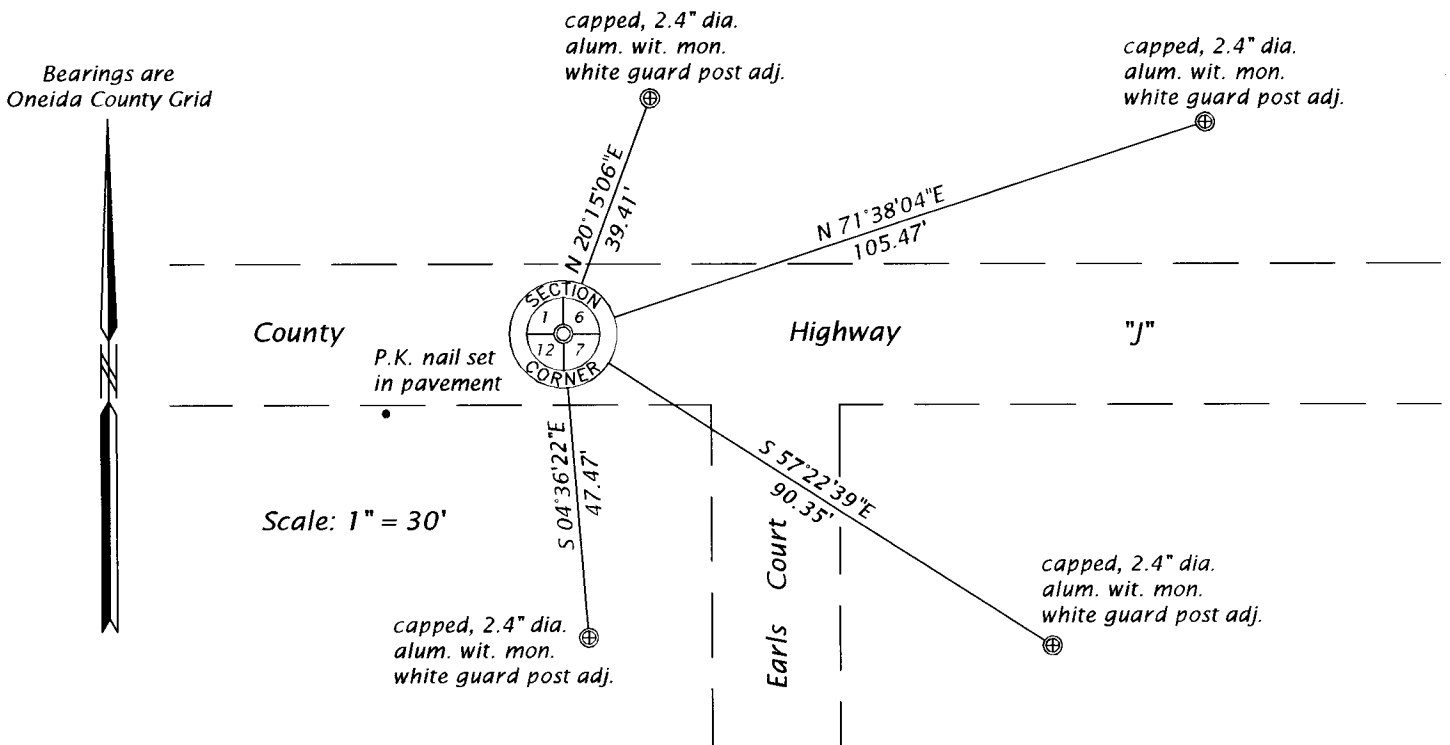
*SEE PREVIOUS U.S.P.L.S. MONUMENT
RECORD DATED JULY 27, 1983.*

(f)(g)(h) DESCRIPTION OF MONUMENT FOUND AT THIS CORNER AND IF IT WAS ACCEPTED, STATE ALL EVIDENCE (MATERIAL, TESTIMONIAL, OCCUPATIONAL, PLATS, RECORD, OTHER MONUMENTS) USED AS A BASIS FOR ESTABLISHING LOCATION. IF NOT ACCEPTED OR IF NOTHING WAS FOUND, STATE EVIDENCE USED AS BASIS FOR ESTABLISHING LOCATION. IF REESTABLISHED THROUGH LOST CORNER PROPORTIONATE METHODS, INDICATE ALL MONUMENTS, DISTANCES AND DIRECTIONS USED TO ESTABLISH. INDICATE TYPE OF MONUMENT AND SIGN POST FOUND OR SET.

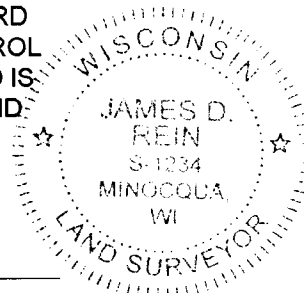
This is a perpetuation of a previous U.S.P.L.S. Monument Record by David W. Dionne, RLS, dated July 27, 1983, and filed in the office of the Oneida County Register of Deeds. A complete history of the corner can be found on the previous monument record. I accept the previous location as a true and faithful perpetuation or reestablishment of the original corner location and further perpetuate it as follows.

April 17, 2019, I, James D. Rein, P.L.S. No. S-1234, due to reconstruction of County Highway "J", the previous monument had been removed. While performing a survey in August of 2003, we recovered and accepted a P.K. nail in the asphalt pavement at the corner position. That P.K. nail was removed by more recent construction. We set a new P.K. nail in the asphalt pavement, at our previous 2003 position, based on that prior traverse control (see Oneida County Certified Survey Map No. 2929). We referenced this restored corner to four found aluminum reference monuments, of unknown origin, as shown below in the plan.

(c)(d)(e) PLAN VIEW OF CORNER WITH TIES TO AT LEAST 4 WITNESS MONUMENTS. IF IN DISAGREEMENT WITH PREVIOUSLY ESTABLISHED CORNER, SHOW THE DISTANCE BETWEEN THE TWO CORNERS AND ALSO INDICATE THE TIES TO THE DISPUTED CORNER.



(i) I, JAMES D. REIN, PROFESSIONAL LAND SURVEYOR NO. S-1234 HEREBY CERTIFY THAT THE CORNER LOCATION ON THIS RECORD WAS DETERMINED BY ME OR UNDER MY DIRECTION AND CONTROL AND THAT THIS U.S. PUBLIC LAND SURVEY MONUMENT RECORD IS CORRECT AND COMPLETE TO THE BEST OF MY KNOWLEDGE AND BELIEF.



James D. Rein
SIGNATURE

6-17-19
DATE

INDEX NO. E-1
3906010000