

Stock No. 26273

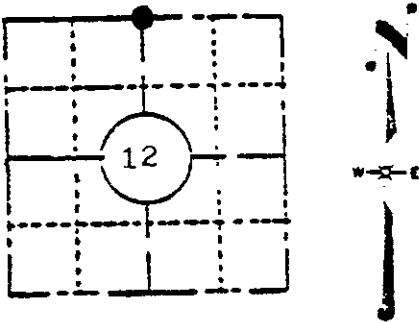
# U. S. PUBLIC LAND SURVEY MONUMENT RECORD

### INSTRUCTIONS:

(a) Identify the corner by reference to the U.S. public land survey system.

This record shall show the location of the corner and shall include all of the following nine elements (a through i).

This corner was originally established in the course of the survey of T39N, R6E by Alexander Anderson, Deputy Surveyor. Survey was commenced Oct. 15, 1863 and completed Oct. 23, 1863  
Original bearing trees: 10" Y. Pine S70W, 571ks.  
12" Y. Pine N41E, 801ks.  
Original Corner: "Set 1/4 Sec Post."



LOCATION SKETCH  
(Location of landmark indicated by "●")

Compared with all record data and accepted as correct.

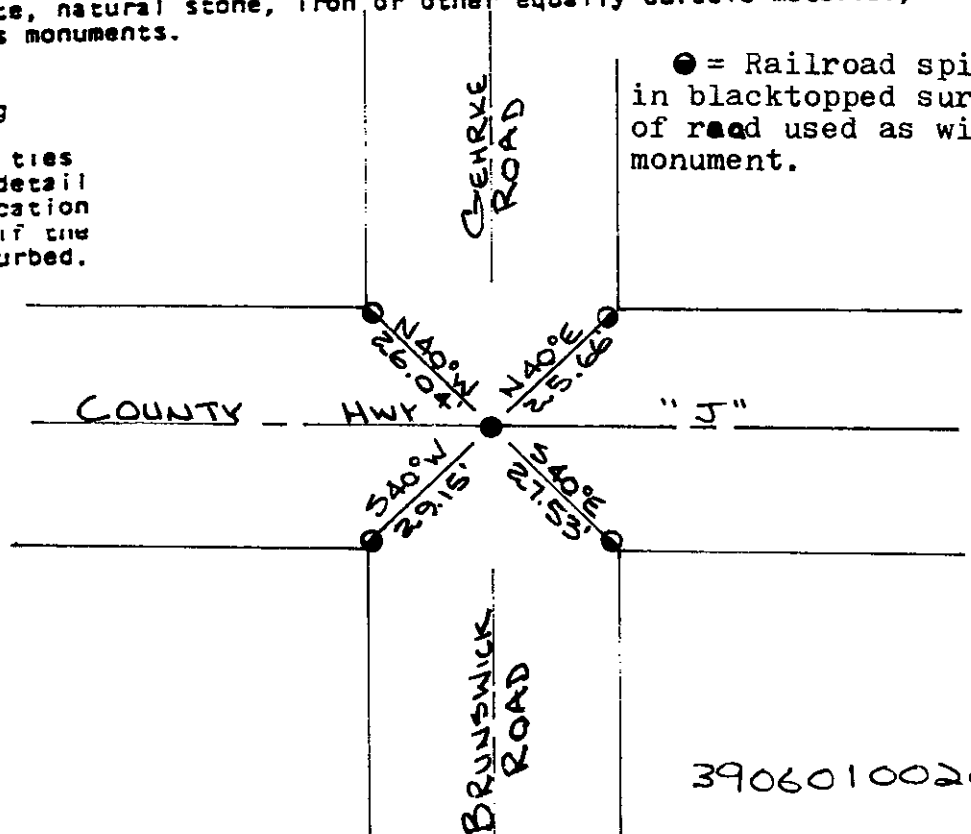
*Robert H. Winat*  
Robert H. Winat, Oneida Co. Surv.  
1984 - 15 March

(b) Describe any record evidence, monument evidence, occupational evidence, testimonial evidence or any other material evidence you considered, and whether the monument was found or placed.

Found railroad spike in centerline of County Hwy. "J". Said spike accepted and used by others in the course of the subdivision of lands. Found no evidence of original corner or bearing trees.

(c) In the plan view drawing below, provide reference ties to at least 4 witness monuments, or, if the location is within a municipality, to at least 2 witness monuments. (Witness monuments shall be made of concrete, natural stone, iron or other equally durable material, except wood.) Describe witness monuments.

(d) Show a plan view drawing depicting the relevant monuments and reference ties which is sufficient in detail to enable accurate relocation of the corner monument if the corner monument is disturbed. Indicate north.



3906010020

(e) Describe any material discrepancy between the location of the corner as restored or reestablished and the location of that corner as previously restored or reestablished by distance and direction. Show the discrepancy on the plan view drawing under (d), above. Show the distances between the corner as previously restored or reestablished and (1) the corner as restored or reestablished, and (2) to at least 2 of the witness monuments shown on the drawing in (d), above.

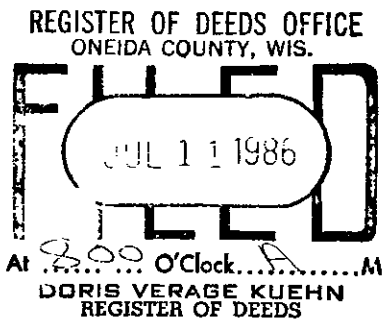
See item (d)

(f) Was the corner restored through acceptance of (1) an obliterated evidence location, or, (2) a found perpetuated location?

I accepted the found perpetuated location of this corner.

(g&h) Was the corner reestablished through lost corner proportionate methods? If so, show the method, including the directions and distances to other public land survey corners used as evidence or used for proportioning in determining the corner location?

See item (f)



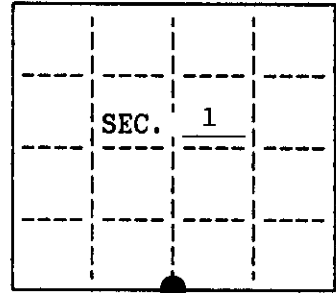
(i) I, David W. Dionne R.L.S. 1582 (type or print name) certify that the corner location shown on this record was determined by me or under my direction and control and that this U.S. Public Land Survey Monument Record is correct and complete to the best of my knowledge and belief.

David W. Dionne 7/27/83  
Signature Date

**U.S. PUBLIC LAND SURVEY MONUMENT RECORD**

Note: This form is intended and designed to fulfill all requirements of Wisconsin Administrative Code, Chapter A-8 7.08 U.S. Public Land Survey Monument Record (3)(a)(b)(c)(d)(e)(f)(g)(h)(i). An additional sheet may be added if necessary to conform with said requirements.

(a) CORNER LOCATION: State Plane Coordinates  
 South 1/4 corner of Sec. 1 X \_\_\_\_\_  
 Township 39 North Y \_\_\_\_\_  
 Range 6 East Datum Base \_\_\_\_\_  
 Town/XXX Woodruff County of Oneida



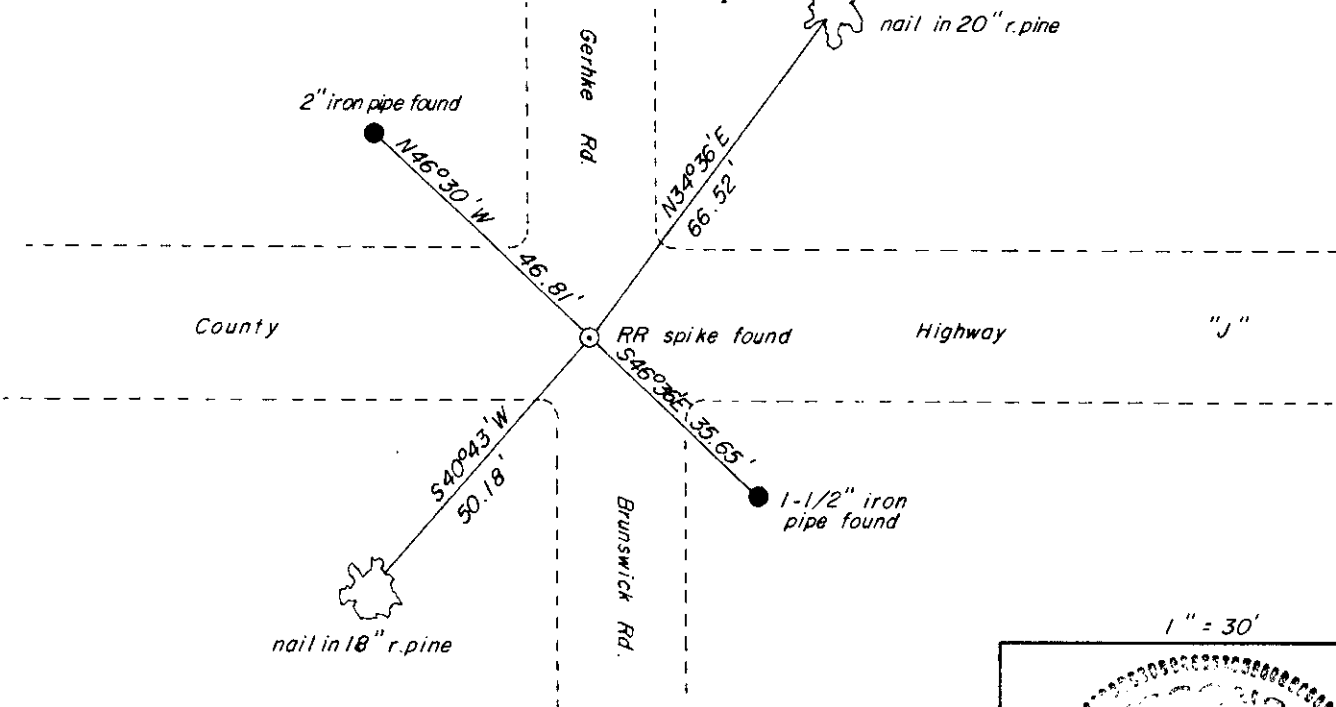
(b) HISTORY OF ORIGINAL CORNER ESTABLISHMENT  
 Original Surveyor: Alexander Anderson  
 Date of Survey: Commenced October, 1863  
 Completed October, 1863

Original B.T.'S  
 10" Y. Pine S70°W, 57 lks  
 12" Y. Pine N41°E, 80 lks

(b)(f)(g)(h) Description of monument found at this corner and if it was accepted, state all evidence (material, testimonial, occupational, plats, records, other monuments) used as a basis for accepting. If not accepted or if nothing was found, state evidence used as basis for establishing location. If reestablished through lost corner proportionate methods, indicate all monuments, distances and directions used to establish. Indicate type of monument and sign post found or set.

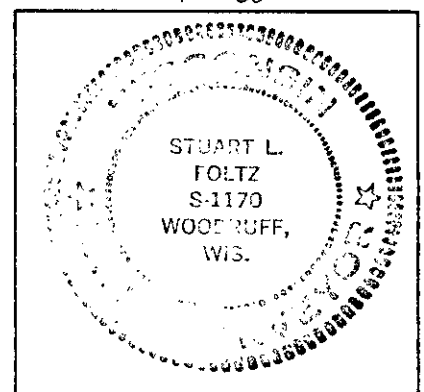
March, 1984: USPLS monument record prepared and filed by Robert H. Winat indicates corner monumented with a railroad spike at the intersection of four road centerlines.  
 October 6, 1994: I found and accepted a railroad spike 3" below the pavement of County Highway "J". I established witnesses as shown below and set a plastic signpost adjacent to the 2" iron pipe.

(c)(d)(e) Plan view of corner with ties to at least 4 witness monuments. If in disagreement with previously established corner, show the distances between the two corners and also indicate the ties to the disputed.



(i) I, Stuart L. Foltz, Reg. Land Surveyor #S-1170 hereby certify that the corner location on this record was determined by me or under my direction and control and that this U.S. Public Land Survey Monument Record is correct and complete to the best of my knowledge and belief.

Stuart L. Foltz 12/8/94  
 Signature Inman-Foltz & Associates, Inc. Date



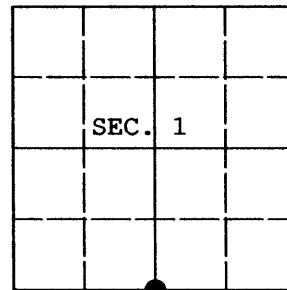
INDEX NO. E-23

3966010020

**U.S. PUBLIC LAND SURVEY MONUMENT RECORD**

Note: This form is intended and designed to fulfill all requirements of Wisconsin Administrative Code, Chapter A-E 7.08 U.S. Public Land Survey Monument Record (3) (a) (b) (c) (d) (e) (f) (g) (h) (i). An additional sheet may be added if necessary to conform with said requirements.

(a) CORNER LOCATION: Plane Coordinates  
 1/4 Cor. of Secs. 1 & 12 X:  
 Township 39 North Y:  
 Range 6 East of the 4th P.M. Datum:  
 Town of Woodruff County of Oneida



(b) HISTORY OF ORIGINAL CORNER ESTABLISHMENT

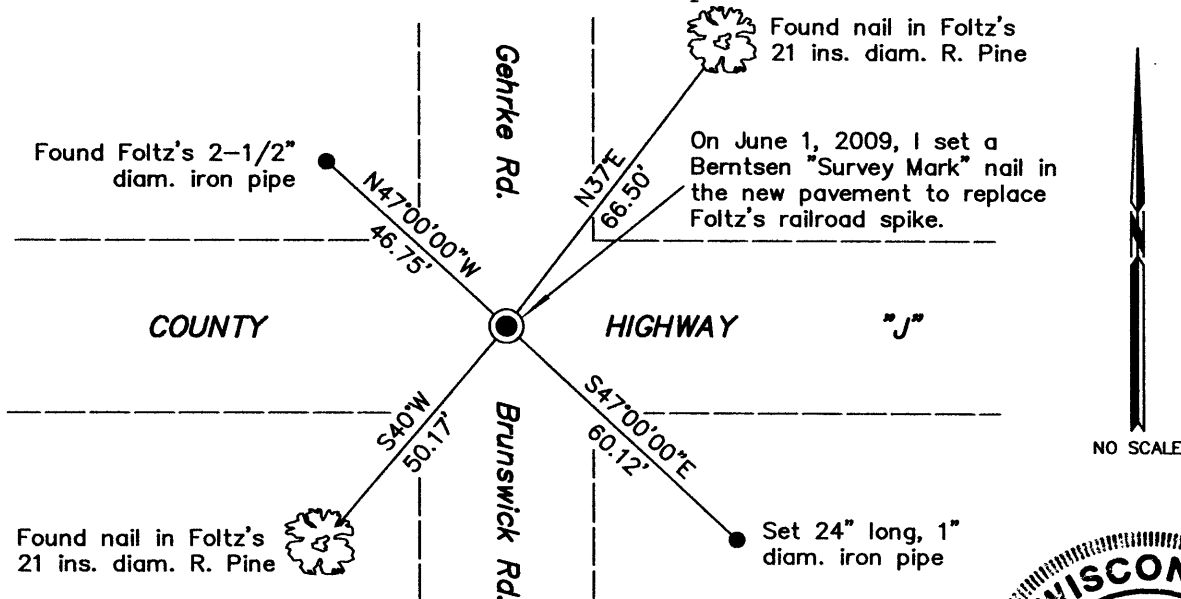
Original Surveyor: Alexander Anderson Original Accessories:  
 Date of Survey: Commenced Oct. 13, 1863 Y. Pine 10" S.70°W., 57 lks.  
 Completed Oct. 23, 1863 Y. Pine 12" N.41°E., 80 lks.

(b) (f) (g) (h) Description of monument found at this corner and if it was accepted, state all evidence (material, testimonial, occupational, plats, records, other monuments) used as a basis for accepting. If not accepted or if nothing was found, state evidence used as basis for establishing location. If re-established through lost corner proportionate methods, indicate all monuments, distances and directions used to establish. Indicate type of monument and sign post found or set.

NOTE: This is a perpetuation of a previous USPLS Monument Record by Stuart L. Foltz, RLS dated Dec. 8, 1994 and filed in the office of the Oneida County Register of Deeds. A complete history of the corner can be found on the previous monument record. I accept the previous location as a true and faithful perpetuation or reestablishment of the original corner location and further perpetuate it as follows.

April 13, 2009: I found and accepted Foltz's monument, a railroad spike in the pavement of County Highway "J." I found Foltz's iron pipe at 35.65 ft. bent and unusable. I established accessories as shown below and found a white plastic sign post adjacent to the iron pipe at 46.75 ft.

(c) (d) (e) Plan view of corner with ties to at least 4 witness monuments. If in disagreement with previously established corner, show the distances between the two corners and also indicate the ties to the disputed.



(i) I, Jeffrey W. Austin, Registered Land Surveyor No. S-1885, hereby certify upon honor that the corner location on this record was determined by me or under my direction and control and that this U.S. Public Land Survey Monument Record is correct and complete to the best of my knowledge and belief.

Signature

JUNE 2, 2009  
 Date 3906010020



INDEX NO. E-23 (3906010020)

# U.S. PUBLIC LAND SURVEY MONUMENT RECORD

REGISTER OF DEEDS OFFICE  
ONEIDA COUNTY  
FILED

OCT 08 2019

Note: This form is intended and designed to fulfill all requirements of the Wisconsin Administrative Code, Chapter A-E 7.08 U.S. Public Land Monument Record (3)(a)(b)(c)(d)(e)(f)(g)(h)(i). An additional sheet may be added if necessary to conform with said requirements.

KYLE J. FRANSON  
REGISTER OF DEEDS

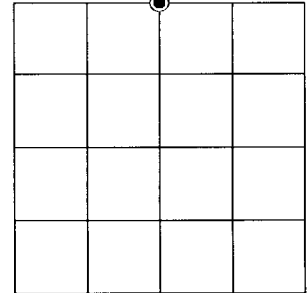
**(a) CORNER LOCATION:**

North Quarter Corner of Section 12  
Township 39 North  
Range 6 East  
Town of Minocqua  
County of Oneida

North:  
East:  
Datum:  
GNSS Method:  
GNSS Control:

(RECORDING AREA)

SECTION 12



**(b) HISTORY OF ORIGINAL CORNER ESTABLISHMENT**

Original Surveyor:  
Date of Survey: Commenced  
Completed  
Original B.T.'S

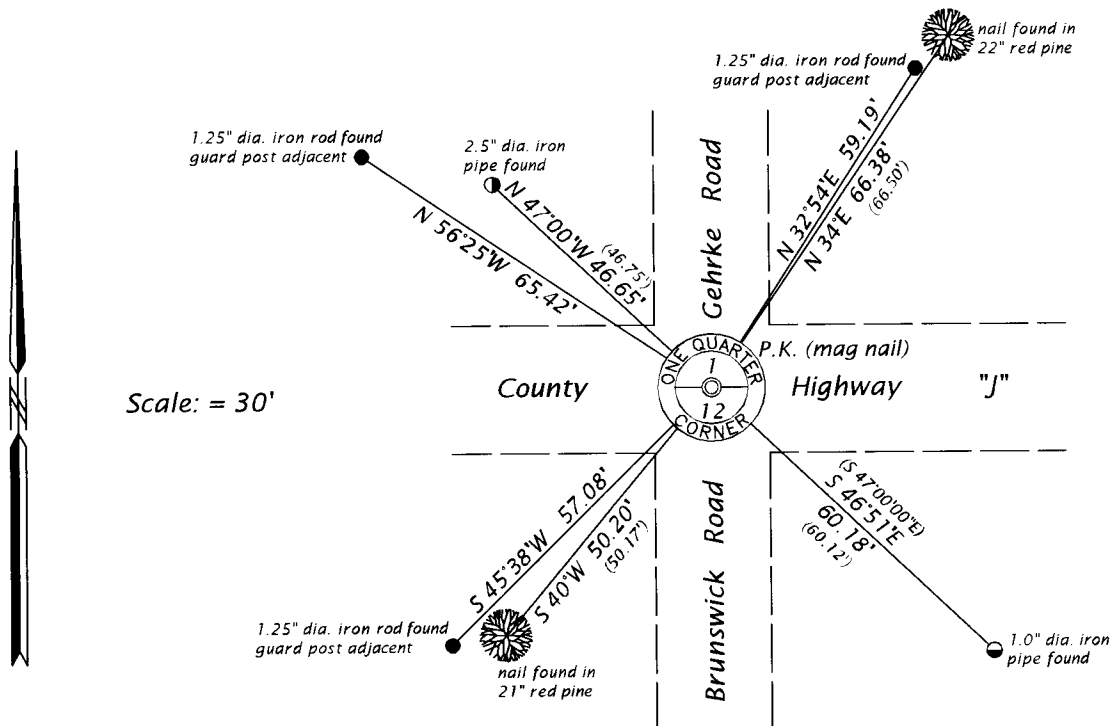
*SEE PREVIOUS U.S.P.L.S. MONUMENT RECORD DATED JUNE 2, 2009.*

(f)(g)(h) DESCRIPTION OF MONUMENT FOUND AT THIS CORNER AND IF IT WAS ACCEPTED, STATE ALL EVIDENCE (MATERIAL, TESTIMONIAL, OCCUPATIONAL, PLATS, RECORD, OTHER MONUMENTS) USED AS A BASIS FOR ESTABLISHING LOCATION. IF NOT ACCEPTED OR IF NOTHING WAS FOUND, STATE EVIDENCE USED AS BASIS FOR ESTABLISHING LOCATION. IF REESTABLISHED THROUGH LOST CORNER PROPORTIONATE METHODS, INDICATE ALL MONUMENTS, DISTANCES AND DIRECTIONS USED TO ESTABLISH. INDICATE TYPE OF MONUMENT AND SIGN POST FOUND OR SET.

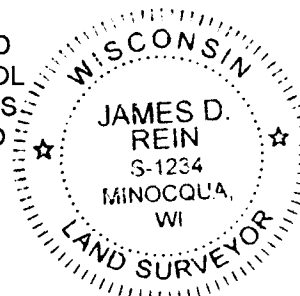
This is a perpetuation of a previous U.S.P.L.S. Monument Record by Jeffrey W. Austin, RLS, dated June 2, 2009, and filed in the office of the Oneida County Register of Deeds. A complete history of the corner can be found on the previous monument record. I accept the previous location as a true and faithful perpetuation or reestablishment of the original corner location and further perpetuate it as follows.

January 4, 2019 I, James D. Rein, P.L.S. No. S-1234, found a P.K. nail in the pavement of County Highway "J". Due to highway construction the previous Berntsen survey nail was removed. In addition to the previous witnesses by Austin, we also recovered three 1.25" dia. iron rods (origin unknown). See below for updated witnesses.

(c)(d)(e) PLAN VIEW OF CORNER WITH TIES TO AT LEAST 4 WITNESS MONUMENTS. IF IN DISAGREEMENT WITH PREVIOUSLY ESTABLISHED CORNER, SHOW THE DISTANCE BETWEEN THE TWO CORNERS AND ALSO INDICATE THE TIES TO THE DISPUTED CORNER.



(i) I, JAMES D. REIN, PROFESSIONAL LAND SURVEYOR NO. S-1234 HEREBY CERTIFY THAT THE CORNER LOCATION ON THIS RECORD WAS DETERMINED BY ME OR UNDER MY DIRECTION AND CONTROL AND THAT THIS U.S. PUBLIC LAND SURVEY MONUMENT RECORD IS CORRECT AND COMPLETE TO THE BEST OF MY KNOWLEDGE AND BELIEF.



*James D. Rein*  
SIGNATURE  
9/09/19  
DATE

INDEX NO. E - 23  
3906010020