

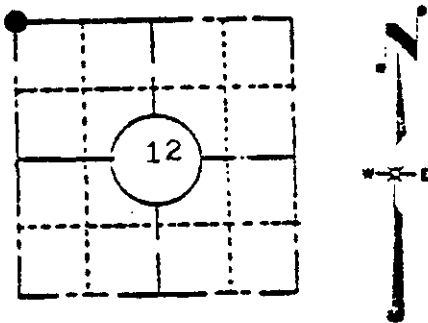
Stock No. 26273

U. S. PUBLIC LAND SURVEY MONUMENT RECORD

INSTRUCTIONS: This record shall show the location of the corner and shall include all of the following nine elements (a through i).

(a) Identify the corner by reference to the U.S. public land survey system.

This corner was originally established in the course of the survey of T39N, R6E by Alexander Anderson, Deputy Surveyor. Survey was commenced Oct. 15, 1863 and completed Oct. 23, 1863.
 Original bearing trees: 8" Birch N65 1/2W 167 lks.
 8" B.Pine S79W, 122 lks.
 Original corner: "Set post for cor to Sects 1,2,11 & 12."



LOCATION SKETCH
 (Location of landmark indicated by "●")

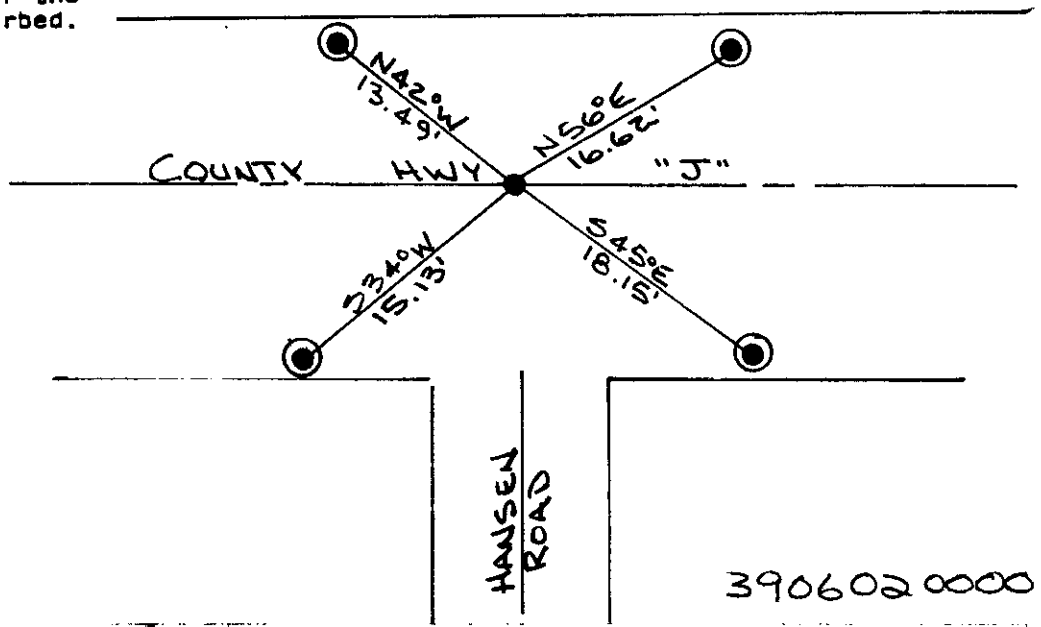
(b) Describe any record evidence, monument evidence, occupational evidence, testimonial evidence or any other material evidence you considered, and whether the monument was found or placed.

Found 1" dia. iron pipe 12" below ~~XXXXXXXXXX~~ blacktopped surface of County Hwy. "J" Said iron pipe accepted and used by others in the course of the subdivision of lands. Found no evidence of original corner or bearing trees.

(c) In the plan view drawing below, provide reference ties to at least 4 witness monuments, or, if the location is within a municipality, to at least 2 witness monuments. (Witness monuments shall be made of concrete, natural stone, iron or other equally durable material, except wood.) Describe witness monuments.

(d) Show a plan view drawing depicting the relevant monuments and reference ties which is sufficient in detail to enable accurate relocation of the corner monument if the corner monument is disturbed. Indicate north.

⊙ = Railroad spike in blacktopped surface of road used as witness monument.



E-21

3906020000

(e) Describe any material discrepancy between the location of the corner as restored or reestablished and the location of that corner as previously restored or reestablished by distance and direction. Show the discrepancy on the plan view drawing under (d), above. Show the distances between the corner as previously restored or reestablished and (1) the corner as restored or reestablished, and (2) to at least 2 of the witness monuments shown on the drawing in (d), above.

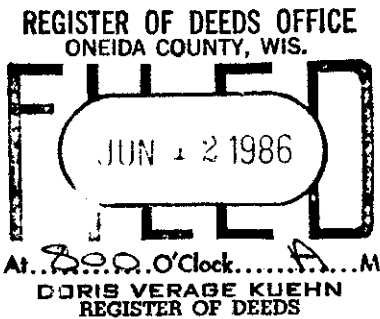
See item (d)

(f) Was the corner restored through acceptance of (1) an obliterated evidence location, or, (2) a found perpetuated location?

I accepted the found perpetuated location of this corner.

(g&h) Was the corner reestablished through lost corner proportionate methods? If so, show the method, including the directions and distances to other public land survey corners used as evidence or used for proportioning in determining the corner location?

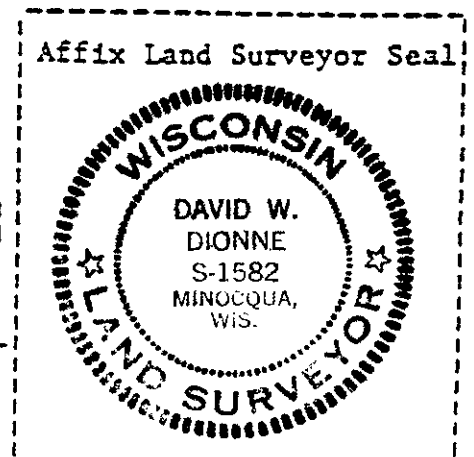
See item (f)

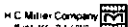


(i) I, David W. Dionne R.L.S. 1582
(type or print name) certify that the corner location shown on this record was determined by me or under my direction and control and that this U.S. Public Land Survey Monument Record is correct and complete to the best of my knowledge and belief.

David W. Dionne
Signature

7/27/83
Date





Stock No. 26273

U.S. PUBLIC LAND SURVEY MONUMENT RECORD

Index No. E-21

State of Wisconsin }
County of Oneida } ss.

I, John H. Fisher, do hereby certify that on the 22 day of April 1985, I found evidence of the Section corner of Sections 1, 2, 11 & 12 Township 39 North, Range 6E, Fourth Principal Meridian, as described hereon; and that from this evidence I established a new monument and accessories as described hereon to perpetuate the original location of this corner.

Resident witnesses:

None

History of original corner establishment:

The original Government survey was performed by Alexander Anderson, Deputy Surveyor in 1863.
Wood post set:

Birch 8" N65-1/2°W 167 lks
Black Pine 8" S79°W 122 lks

Description of corner evidence found:

1" iron pipe N16°E 19.7 feet
Nail in power pole M63°E 46.4 feet
Pine stump

Description of monument and accessories I established to perpetuate the original location of this corner.

Corner in good condition
Set nails in:

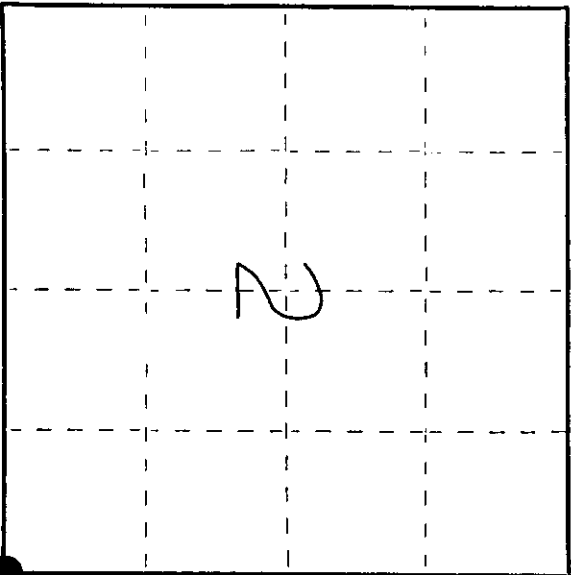
White Pine 10" N39°W 40.35 feet
Norway Pine 6" S54°E 107.60 feet
Steel street sign post S20°W 32.40 feet

Dated at Minocqua, Wis., this 22 day of May, 1985.

Signature: [Signature] Title: Registered Land Surveyor Registration No. S-836
(County Surveyor, Registered Land Surveyor, or other duly authorized official)

Office of Register of Deeds, County of Oneida
Instrument was filed in this office for record on the 12 day of June, 1986 at 8:00 o'clock A.M.

By: [Signature] Deputy
[Signature] (Register of Deeds)



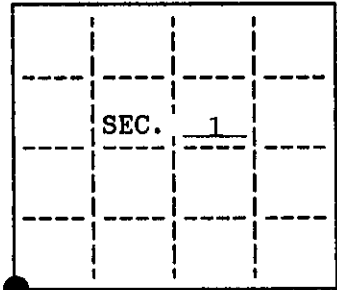
● = Corner monument restored.

00002090629

U.S. PUBLIC LAND SURVEY MONUMENT RECORD

Note: This form is intended and designed to fulfill all requirements of Wisconsin Administrative Code, Chapter A-8 7.08 U.S. Public Land Survey Monument Record (3)(a)(b)(c)(d)(e)(f)(g)(h)(i). An additional sheet may be added if necessary to conform with said requirements.

(a) CORNER LOCATION: State Plane Coordinates
 SW corner of Sec. 1 X _____
 Township 39 North Y _____
 Range 6 East Datum Base _____
 Town/~~XXX~~ Woodruff County of Oneida



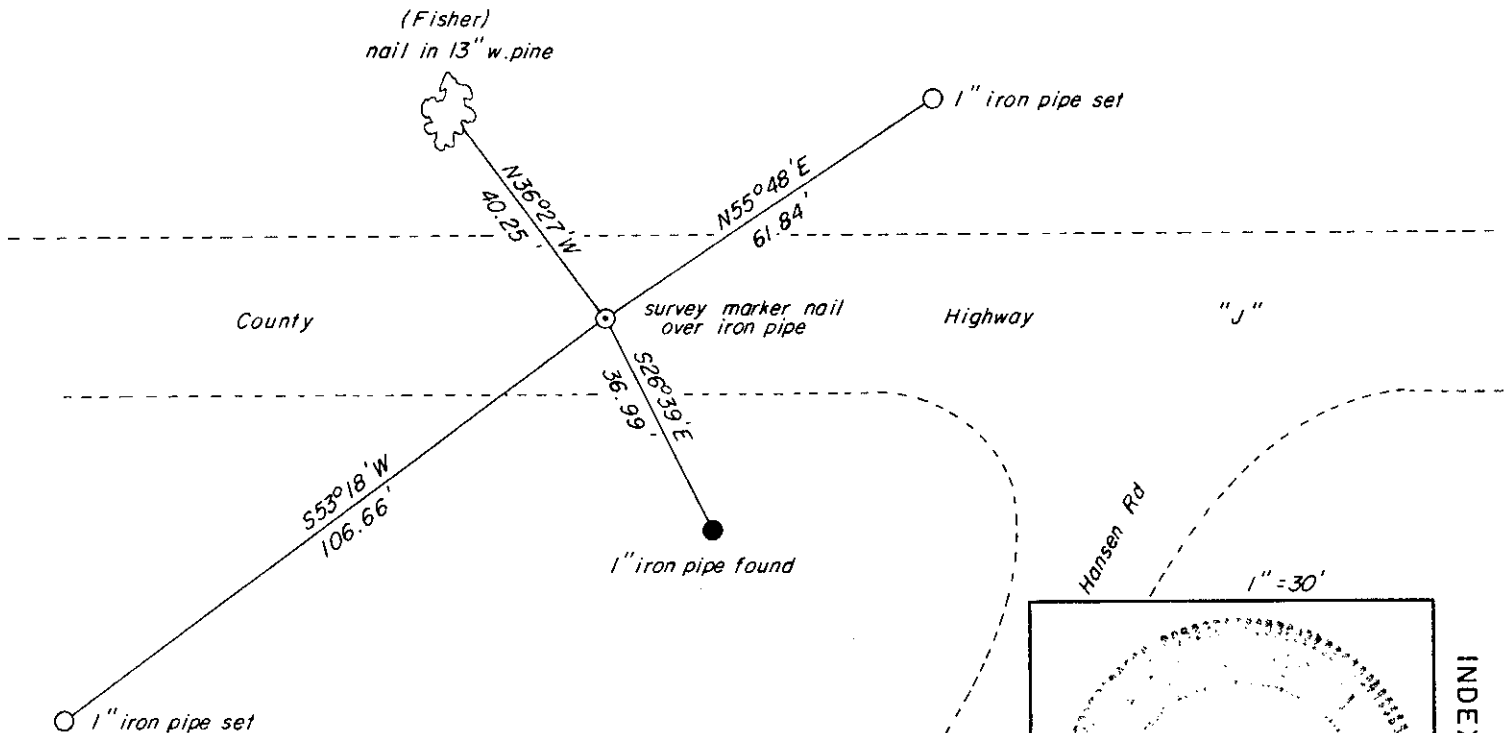
(b) HISTORY OF ORIGINAL CORNER ESTABLISHMENT
 Original Surveyor: Alexander Anderson
 Date of Survey: Commenced October, 1863
 Completed October, 1863

Original B.T.'S
 8" Birch N65-1/2°W, 167 lks
 8" Blk. Pine S79°W, 122 lks

(b)(f)(g)(h) Description of monument found at this corner and if it was accepted, state all evidence (material, testimonial, occupational, plats, records, other monuments) used as a basis for accepting. If not accepted or if nothing was found, state evidence used as basis for establishing location. If reestablished through lost corner proportionate methods, indicate all monuments, distances and directions used to establish. Indicate type of monument and sign post found or set.

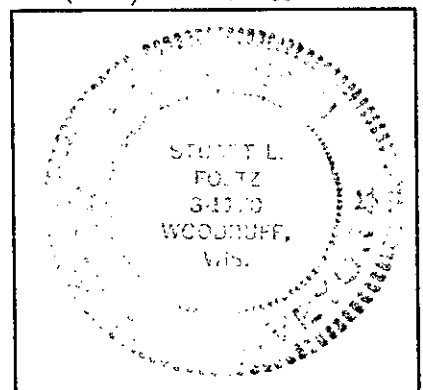
May, 1985: USPLS monument record prepared and filed by John H. Fisher indicates corner monumented with a 1" iron pipe, witnessed by a 10" W. Pine, N39°W, 40.30 feet.
 October 6, 1994: I found and accepted a PK nail set by Wisconsin DOT. I replaced the nail with a survey marker nail which is over an iron pipe based on indications from a magnetic locator. I established witnesses as shown below and set a plastic signpost adjacent to the northeast iron pipe.

(c)(d)(e) Plan view of corner with ties to at least 4 witness monuments. If in disagreement with previously established corner, show the distances between the two corners and also indicate the ties to the disputed.



(i) I, Stuart L. Foltz, Reg. Land Surveyor #S-1170 hereby certify that the corner location on this record was determined by me or under my direction and control and that this U.S. Public Land Survey Monument Record is correct and complete to the best of my knowledge and belief.

Stuart L. Foltz 12/0/94
 Signature Inman-Foltz & Associates, Inc. Date



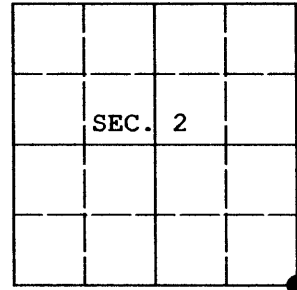
INDEX NO. E-21

3906020000

U.S. PUBLIC LAND SURVEY MONUMENT RECORD

Note: This form is intended and designed to fulfill all requirements of Wisconsin Administrative Code, Chapter A-E 7.08 U.S. Public Land Survey Monument Record (3) (a) (b) (c) (d) (e) (f) (g) (h) (i). An additional sheet may be added if necessary to conform with said requirements.

(a) CORNER LOCATION: Plane Coordinates
 Cor. of Secs. 1, 2, 11 & 12 X:
 Township 39 North Y:
 Range 6 East of the 4th P.M. Datum:
 Town of Woodruff County of Oneida



(b) HISTORY OF ORIGINAL CORNER ESTABLISHMENT

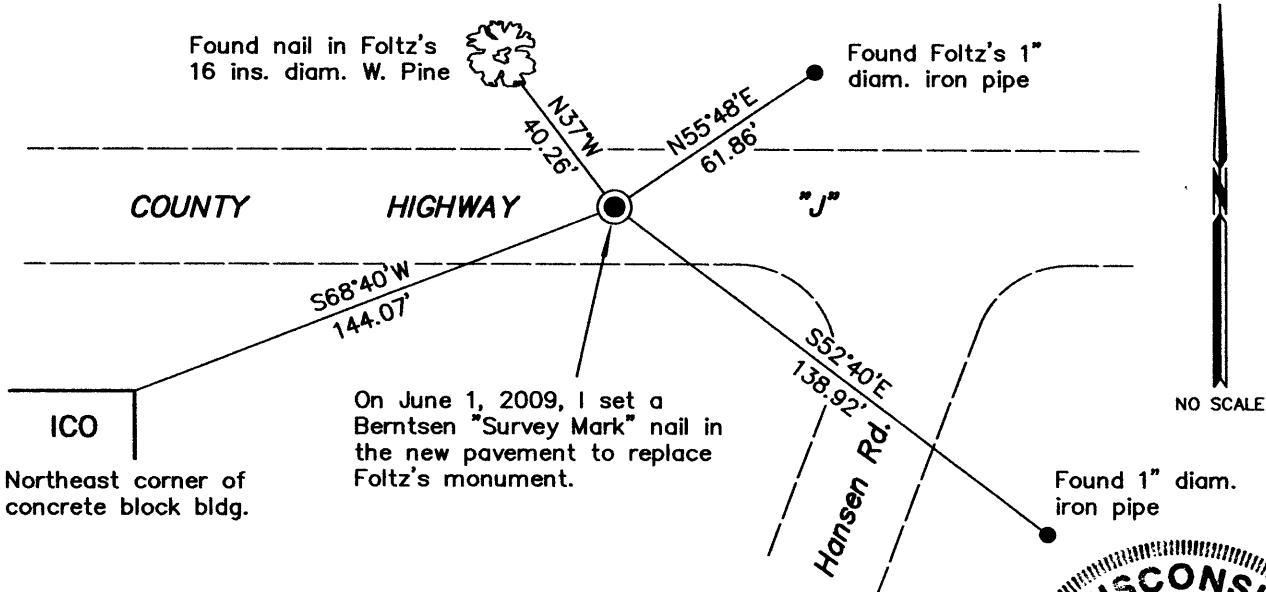
Original Surveyor: Alexander Anderson Original Accessories:
 Date of Survey: Commenced Oct. 13, 1863 Birch 8" N.65-1/2°W., 167 lks.
 Completed Oct. 23, 1863 B. Pine 8" S.79°W., 122 lks.

(b) (f) (g) (h) Description of monument found at this corner and if it was accepted, state all evidence (material, testimonial, occupational, plats, records, other monuments) used as a basis for accepting. If not accepted or if nothing was found, state evidence used as basis for establishing location. If re-established through lost corner proportionate methods, indicate all monuments, distances and directions used to establish. Indicate type of monument and sign post found or set.

NOTE: This is a perpetuation of a previous USPLS Monument Record by Stuart L. Foltz, RLS dated Dec. 8, 1994 and filed in the office of the Oneida County Register of Deeds. A complete history of the corner can be found on the previous monument record. I accept the previous location as a true and faithful perpetuation or reestablishment of the original corner location and further perpetuate it as follows.

April 13, 2009: I found and accepted Foltz's monument, a Berntsen "Survey Mark" nail in the pavement of County Highway "J." I was unable to find Foltz's iron pipe at 36.99 ft. and I found his iron pipe at 106.66 ft. bent and unusable. I established accessories as shown below and found a white plastic sign post adjacent to the iron pipe at 61.86 ft.

(c) (d) (e) Plan view of corner with ties to at least 4 witness monuments. If in disagreement with previously established corner, show the distances between the two corners and also indicate the ties to the disputed.



(i) I, Jeffrey W. Austin, Registered Land Surveyor No. S-1885, hereby certify upon honor that the corner location on this record was determined by me or under my direction and control and that this U.S. Public Land Survey Monument Record is correct and complete to the best of my knowledge and belief.

Signature: *[Handwritten Signature]* Date: JUNE 2, 2009
 3906020000



INDEX NO. E-21 (3906020000)

