

State of Wisconsin }
 County of Oneida } ss.

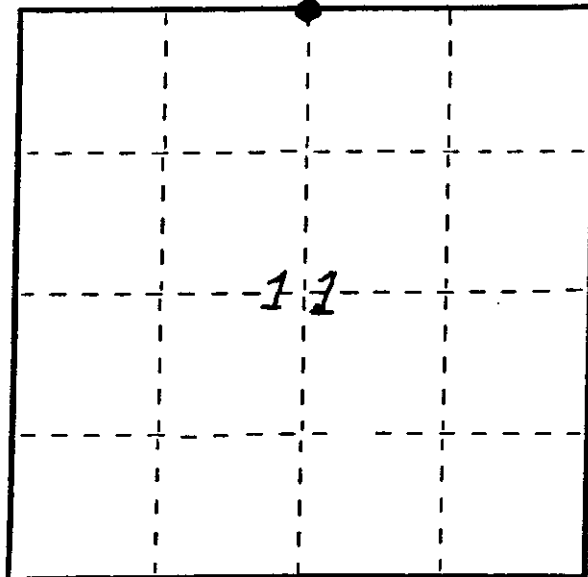
U. S. Public Land Survey Monument Record

Index No. E-19

I, John H. Fisher, do hereby certify that on the 29 day of October, 1984, I found evidence of the North one quarter corner of Section 11 Township 39, North, Range 6 East, Fourth Principal Meridian, as described hereon; and that from this evidence I established a new monument and accessories as described hereon to perpetuate the original location of this corner.

Resident witnesses:

None



● = Corner monument restored.

History of original corner establishment:

The original Government survey was performed by Alexander Anderson, Deputy Surveyor in October 1863.

Wood post set			
Aspen	9"	N48 1/4°E	24 Links
White Pine	9"	S48 1/2°W	26 links

Description of corner evidence found:

2" iron pipe			
Old scribed stump		N83°W	9.8 feet
Maple		S52°W	31.8 feet
1" iron pipe		South	25.00 feet
Nail in power pole No. 3906 ZL46,		N28°W	59.82 feet

Description of monument and accessories I established to perpetuate the original location of this corner.

I perpetuated the location of corner by replacing the 2" iron pipe, with an Oneida County 2" aluminum pipe 3' long with 3" diameter aluminum tablet stamped to identify corner.

Set nail in power pole No. 3906-11E111
 N48°E, 2.62 feet

Dated at Minocqua, Wis., this 31 day of October, 1984.

Signature John H. Fisher Title Registered Land Surveyor Registration No. S-836
 (County Surveyor, Registered Land Surveyor, or other duly authorized official)

Office of Register of Deeds, County of....., I hereby certify that the within instrument was filed in this office for record on the.....day of....., 19..... at.....o'clock..... M.

(Register of Deeds)

By.....Deputy

3906020020

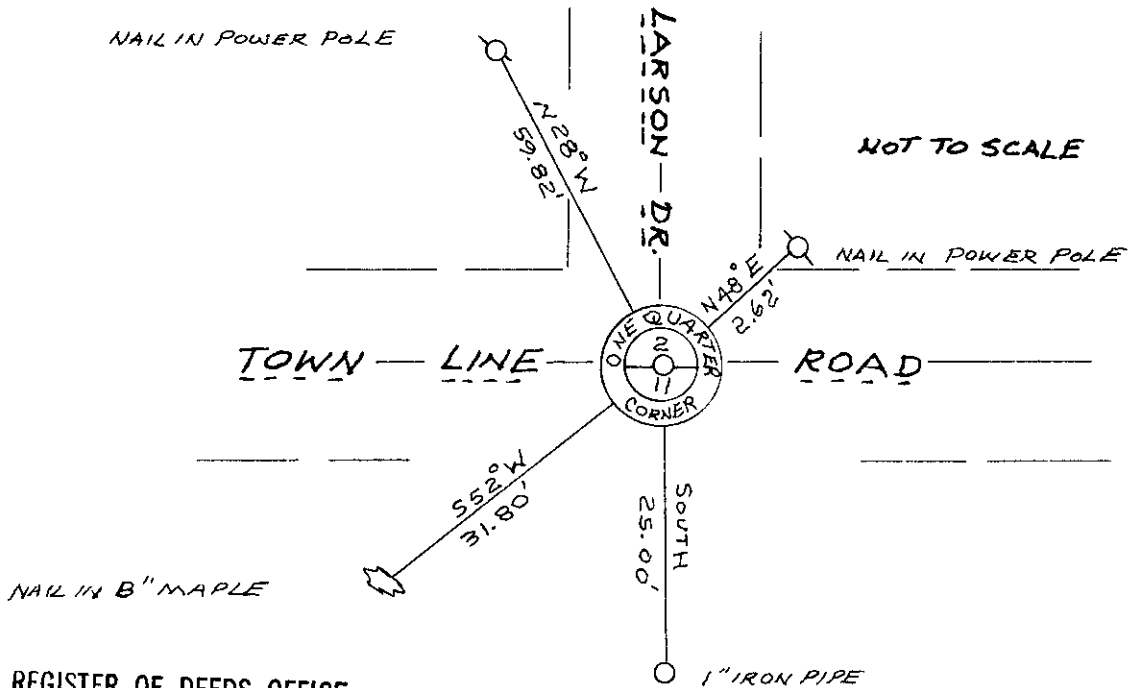
Describe any material discrepancy between the location of the corner as restored or reestablished and the location of that corner as previously restored or reestablished by distance and direction. Show the discrepancy on the plan view drawing under (d), above. Show the distances between the corner as previously restored or reestablished and (1) the corner as restored or reestablished, and (2) to at least 2 of the witness monuments shown on the drawing in (d), above.

See Drawing Below

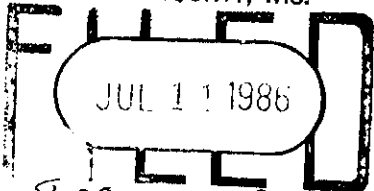
Was the corner restored through acceptance of (1) an obliterated evidence location, or, (2) a found perpetuated location?

Found Perpetuated Location

Was the corner reestablished through lost corner proportionate methods? If so, show the method, including the directions and distances to other public land survey corners used as evidence or used for proportioning in determining the corner location?



REGISTER OF DEEDS OFFICE
ONEIDA COUNTY, WIS.



At 8:00 O'Clock A.M.
JORIS VERABE KUEHN
REGISTER OF DEEDS



John H. Fisher

I, John H. Fisher (type or print name) certify that the corner location shown on this record was determined by me or under my direction and control and that this U.S. Public Land Survey Monument Record is correct and complete to the best of my knowledge and belief.

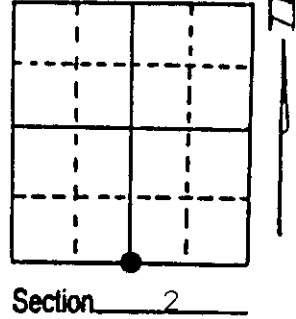
John H. Fisher
Signature

10/31/84
Date

U.S. PUBLIC LAND SURVEY MONUMENT RECORD

Note: This form is intended and designed to fulfill all requirements of Wisconsin Administrative Code, Chapter A-E 7.08 U.S. Public Land Survey Monument Record (3) (a) (b) (c) (d) (e) (f) (g) (h) (i). An additional sheet may be added if necessary to conform with said requirements.

(a) Corner location: Township 39 North
 Range 6 East/West
 Town/City/Village Minocqua
 County Oneida



(b) (f) (g) (h) Description of monument found at this corner and if it was accepted, state all evidence (material, testimonial, occupational, plats, records, other monuments) used as a basis for accepting. If not accepted or if nothing was found, state evidence used as basis for establishing location. If reestablished through lost corner proportionate methods, indicate all monuments, distances and directions used to establish. Indicate type of monument found or set and sign post.

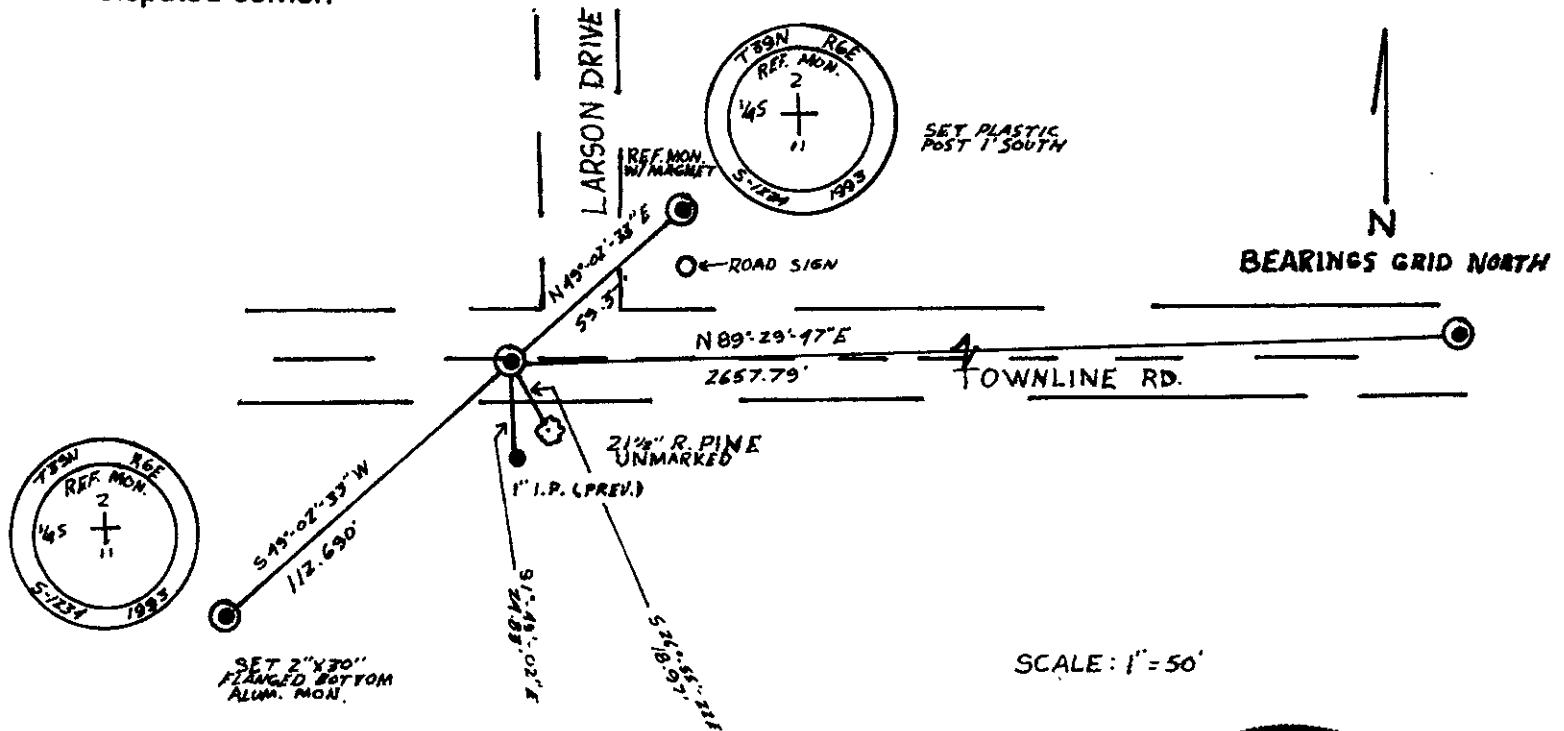
Oct. 13th, 1863 - Alexander Anderson, Deputy Surveyor, set quarter section post being witnessed by two bearing trees: a 9" Aspen bearing N84 $\frac{1}{4}$ °E, 24 links; and a 9" W. Pine 26 links.

Aug., 1966 - James G. Griffin, shows on map the the quarter corner was monumented with an iron pipe witnessed by a 16" W. Pine bearing N83°W, 9.8' and a 5" Maple bearing S52°W, 31.7'.

Oct. 31st, 1984 - John H. Fisher, Registered Land Surveyor, recovered a 2" dia. iron pipe referenced by an old scribed stump bearing N83°W, 9.8', an 8" dia. Maple bearing S52°W, 31.8', a 1" dia. iron pipe due South, 25.0', and a power pole with a nail in it bearing N28°W, 59.82'. Replaced the iron pipe with a capped 2" dia. aluminum monument and set nail in power pole No. 3906-11E111 bearing N48°E, 2.62'.

Dec. 1st, 1993 - James D. Rein, Registered Land Surveyor, found that the monument set by John H. Fisher had been obliterated by recent road construction. Remonumented corner position by using my previous nearby survey traverse control points. Set a $\frac{1}{2}$ " dia. iron spindle in asphalt pavement at corner position, made new reference ties as shown in plan view. Set plastic post 1 foot South of Northeast Reference Monument.

(c) (d) (e) Plan view of corner with ties to at least 4 witness monuments. If in disagreement with previously established corner, show the distances between the two corners and also indicate the ties to the disputed corner.



(i) I, James D. Rein, Registered Land Surveyor No. 1234
 (type or print name) certify that the corner location on this record was determined by me or under my direction and control and that this U.S. Public Land Survey Monument Record is correct and complete to the best of my knowledge and belief.

James D. Rein Signature
 December 1st, 1993 Date



Index No. E-19

Stamp 3966026020

U.S. PUBLIC LAND SURVEY MONUMENT RECORD

REGISTER OF DEEDS OFFICE
ONEIDA COUNTY
FILED

Note: This form is intended and designed to fulfill all requirements of the Wisconsin Administrative Code, Chapter A-E 7.08 U.S. Public Land Monument Record (3)(a)(b)(c)(d)(e)(f)(g)(h)(i). An additional sheet may be added if necessary to conform with said requirements.

NOV 26 2018

KYLE J. FRANSON
REGISTER OF DEEDS

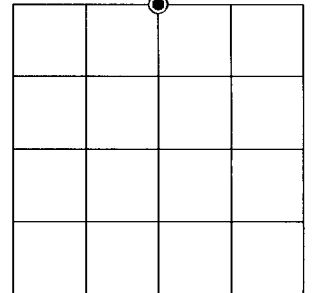
(a) CORNER LOCATION:

North Quarter Corner of Section 11
Township 39 North
Range 6 East
Town of Minocqua
County of Vilas

North:
East:
Datum:
GNSS Method:
GNSS Control:

(RECORDING AREA)

SECTION 11



SEE PREVIOUS U.S.P.L.S. MONUMENT
RECORD DATED DECEMBER 1, 1993.

(b) HISTORY OF ORIGINAL CORNER ESTABLISHMENT

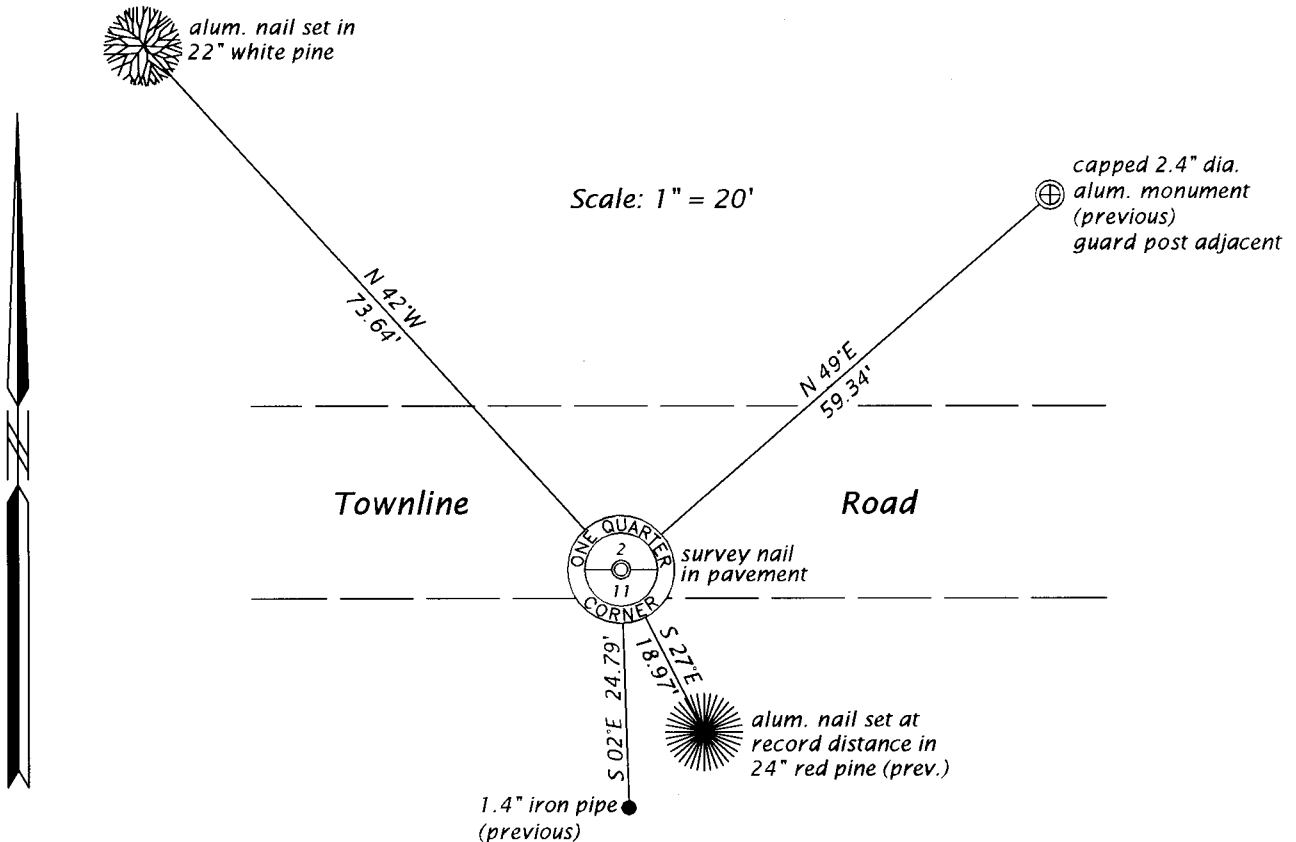
Original Surveyor:
Date of Survey: Commenced
Completed
Original B.T.'S

(f)(g)(h) DESCRIPTION OF MONUMENT FOUND AT THIS CORNER AND IF IT WAS ACCEPTED, STATE ALL EVIDENCE (MATERIAL, TESTIMONIAL, OCCUPATIONAL, PLATS, RECORD, OTHER MONUMENTS) USED AS A BASIS FOR ESTABLISHING LOCATION. IF NOT ACCEPTED OR IF NOTHING WAS FOUND, STATE EVIDENCE USED AS BASIS FOR ESTABLISHING LOCATION. IF REESTABLISHED THROUGH LOST CORNER PROPORTIONATE METHODS, INDICATE ALL MONUMENTS, DISTANCES AND DIRECTIONS USED TO ESTABLISH. INDICATE TYPE OF MONUMENT AND SIGN POST FOUND OR SET.

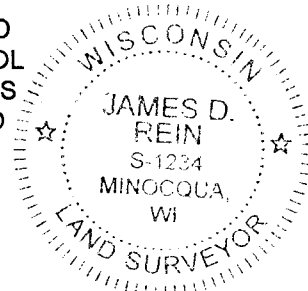
This is a perpetuation of a previous U.S.P.L.S. Monument Record by James D. Rein, RLS, dated December 1, 1993, and filed in the office of the Oneida County Register of Deeds. A complete history of the corner can be found on the previous monument record. I accept the previous location as a true and faithful perpetuation or reestablishment of the original corner location and further perpetuate it as follows.

September 4, 2018, I, James D. Rein, P.L.S. No. S-1234, found and accepted a survey nail in the pavement of Townline Road at the corner position. The southwesterly reference monument is now gone. See below for updated witnesses.

(c)(d)(e) PLAN VIEW OF CORNER WITH TIES TO AT LEAST 4 WITNESS MONUMENTS. IF IN DISAGREEMENT WITH PREVIOUSLY ESTABLISHED CORNER, SHOW THE DISTANCE BETWEEN THE TWO CORNERS AND ALSO INDICATE THE TIES TO THE DISPUTED CORNER.



(i) I, JAMES D. REIN, PROFESSIONAL LAND SURVEYOR NO. S-1234 HEREBY CERTIFY THAT THE CORNER LOCATION ON THIS RECORD WAS DETERMINED BY ME OR UNDER MY DIRECTION AND CONTROL AND THAT THIS U.S. PUBLIC LAND SURVEY MONUMENT RECORD IS CORRECT AND COMPLETE TO THE BEST OF MY KNOWLEDGE AND BELIEF.



[Handwritten Signature]

11-04-18
DATE

INDEX NO. E - 19
3906020020

SIGNATURE