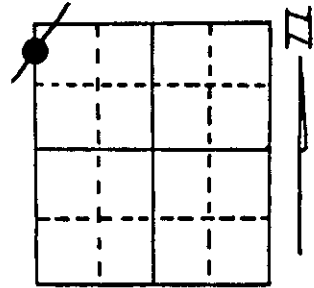


U.S. PUBLIC LAND SURVEY MONUMENT RECORD

Note: This form is intended and designed to fulfill all requirements of Wisconsin Administrative Code, Chapter A-E 5.02, U.S. Public Land Survey Monument Record (3) (a) (b) (c) (d) (e) (f) (g) (h) (i). An additional sheet may be added if necessary to conform with said requirements.

(a) Corner location: Township 39 North
 Range 6 East/West

WOODLAND LAKE



Town/City/Village Woodruff
 County Oneida

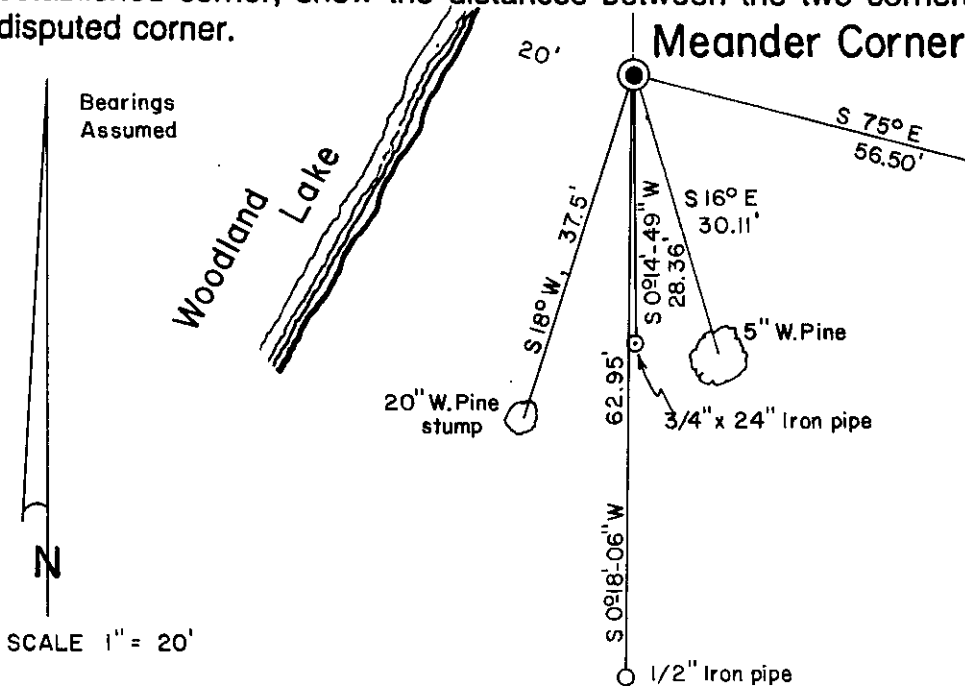
Section 1

(b) (f) (g) (h) Description of monument found at this corner and if it was accepted, state all evidence (material, testimonial, occupational, plats, records, other monuments) used as a basis for accepting. If not accepted or if nothing was found, state evidence used as basis for establishing location. If reestablished through lost corner proportionate methods, indicate all monuments, distances and directions used to establish.

October 1863 - Alexander Anderson, Deputy Surveyor - Set meander corner. Made bearing trees: Y. Pine 18", S30°E, 87 lks and Tamarac 8", S5½°W, 65 lks.
 September 28, 1946 - W. A. Hennig, Surveyor - Set concrete monument for M.C. Found original Y. Pine stump S32°E, 57.5 feet. Made 12" W. Pine, S14°W, 37.3 feet.
 February 24, 1987 - James D. Rein - Registered Land Surveyor - Replaced 5" x 5" concrete monument with capped 2" dia. x 30" long flange bottom aluminum monument stamped to identify corner. Found Hennig's W. Pine, now a 20" stump, S18°W, 37.5 feet. Tied to an existing ½" dia. iron pipe S0°-18'-06"W, 62.95 feet. Set a ¾" x 24" iron pipe on the section line at S0°-14'-49"W, 28.36 feet. Made BT's; 5" W. Pine S16°E, 30.11 feet and 8" R. Pine S75°E, 56.50 feet. Measured to aluminum nails set on side of trees in center of root crown.

Note: Placed deep one magnet in base of aluminum corner monument.

(c) (d) (e) Plan view of corner with ties to at least 4 witness monuments. If in disagreement with previously established corner, show the distances between the two corners and also indicate the ties to the disputed corner.



SCALE 1" = 20'

REGISTER OF DEEDS OFFICE
 ONEIDA COUNTY, WIS.
FILED
 APR 24 1987
 AL 8:00 O'Clock M
 DORIS VERABE KUEHN
 REGISTER OF DEEDS

WISCONSIN
 JAMES D.
 REIN
 S-1234
 MINOCQUA,
 WIS.
 LAND SURVEYOR

Index No. A-B-21

(i) I, James D. Rein, Registered Land Surveyor No. S-1234
 (type or print name) certify that the corner location on this record was determined by me or under my direction and control and that this U.S. Public Land Survey Monument Record is correct and complete to the best of my knowledge and belief.

James D. Rein Signature February 27th, 1987 Date

3906021800