

CERTIFIED LAND CORNER RESTORATION

State of Wisconsin

County of Oneida

ss

we I Gerald B. Inman, do hereby certify that on the 12th day of June, 1981, I found evidence of the South 1/4 corner of Section 3 Township 39N Range 6E, Fourth Principal Meridian, as described hereon; and that from this evidence I established new monuments and accessories as described hereon to perpetuate the original location of this corner:

Description of original monument and accessories and subsequent restorations:

- Wood post
10" B. Pine, N75°E, 13 links
10" B. Pine, S47°E, 15 links

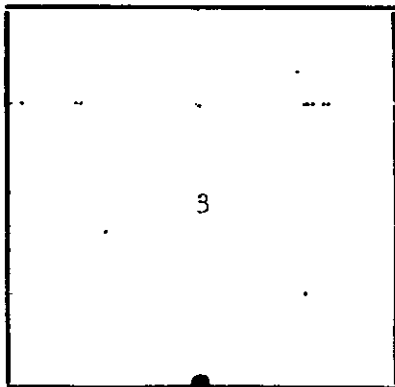
Description of corner evidence found:

- 1-1/2" iron pipe

we

Description of monuments and accessories established to perpetuate the location of this corner:

- 12" White Pine, S48°E, 28.9 feet (to blazed face)
8" White Pine, N18°W, 45.0 feet (to blazed face)



Legend: Circle - Corner monument restored; Square -

Resident witnesses Robert W. Conner, Jr.

Dated at Minocqua Wisconsin, this 12th day of June 1981.

Signature of Gerald B. Inman, Title R.L.S. (County Surveyor, Registered Land Surveyor, or other duly authorized official)

Surveyors Registration No. S-891

Office of Reg. of Deeds County of Oneida

I hereby certify that the within instrument was filed in this office for record on the 12 day of June 1981, and was filed in Book No. Page No. of County Records.

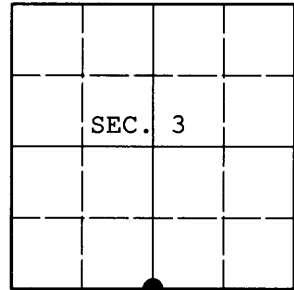
Signature of Dennis Verage, Title Reg. of Deeds

Township, Range, Section, Index No., Page No.

**U.S. PUBLIC LAND SURVEY MONUMENT RECORD**

Note: This form is intended and designed to fulfill all requirements of Wisconsin Administrative Code, Chapter A-E 7.08 U.S. Public Land Survey Monument Record (3) (a) (b) (c) (d) (e) (f) (g) (h) (i). An additional sheet may be added if necessary to conform with said requirements.

(a) CORNER LOCATION: Plane Coordinates  
 1/4 Cor. of Secs. 3 & 10 N:  
 Township 39 North E:  
 Range 6 East of the 4th P.M. Datum:  
 Town of Woodruff County of Oneida



(b) HISTORY OF ORIGINAL CORNER ESTABLISHMENT

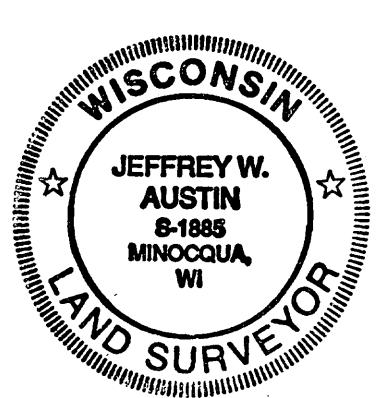
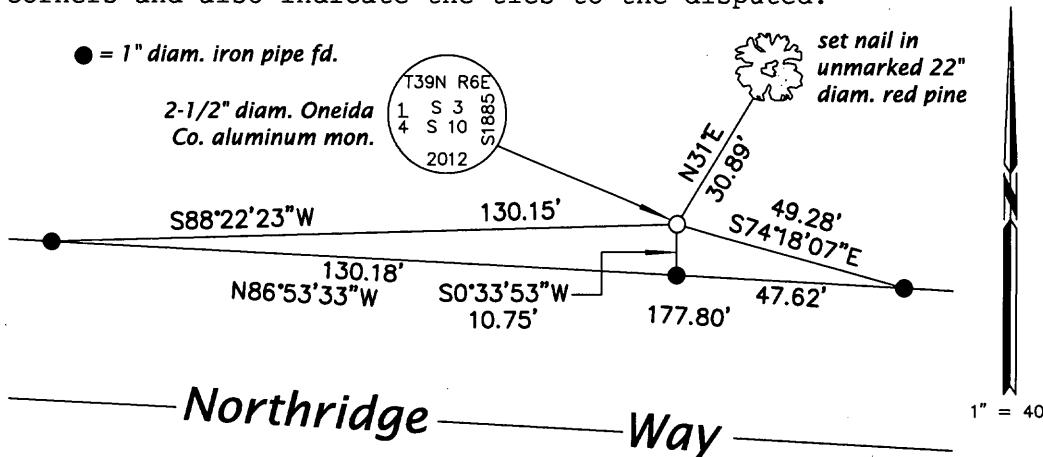
Original Surveyor: Alexander Anderson Original Accessories:  
 Date of Survey: Commenced: October 13, 1863 b. pine 10" N75°E, 13 lks.  
 Completed: October 23, 1863 b. pine 8" S47°E, 15 lks.

(b) (f) (g) (h) Description of monument found at this corner and if it was accepted, state all evidence (material, testimonial, occupational, plats, records, other monuments) used as a basis for accepting. If not accepted or if nothing was found, state evidence used as basis for establishing location. If re-established through lost corner proportionate methods, indicate all monuments, distances and directions used to establish. Indicate type of monument and sign post found or set.

NOTE: This is a perpetuation of a previous USPLS Monument Record by Gerald B. Inman, RLS dated June 12, 1981 and filed in the office of the Oneida County Register of Deeds. A complete history of the corner can be found on the previous monument record. I accept the previous location as a true and faithful perpetuation or reestablishment of the original corner location and further perpetuate it as follows.

April 25, 2012: I found and accepted Inman's monument, a 1-1/2" diam. iron pipe. Although both of Inman's bearing trees are gone, I can substantiate the location based on the usage in recent surveys: C-2389 and C-2621. Over the pipe, I set a 2-1/2" diam., 30" long aluminum pipe with 3-1/4" diam. Oneida County aluminum cap projecting 4" above the ground surface. I found or established accessories as shown below and set a white plastic sign post bearing Northwest, 1 ft. dist.

(c) (d) (e) Plan view of corner with ties to at least 4 witness monuments. If in disagreement with previously established corner, show the distances between the two corners and also indicate the ties to the disputed.



REGISTER OF DEEDS OFFICE  
 ONEIDA COUNTY  
**FILED**

MAY 07 2012

AT \_\_\_\_\_ O'CLOCK \_\_\_\_\_ M  
 THOMAS H. LEIGHTON  
 REGISTER OF DEEDS

(i) I, Jeffrey W. Austin, Registered Land Surveyor No. S-1885, hereby certify that the corner location on this record was determined by me or under my direction and control and that this U.S. Public Land Survey Monument Record is correct and complete to the best of my knowledge and belief.

*[Handwritten Signature]*  
 Signature

MAY 1, 2012  
 Date