

U.S. PUBLIC LAND SURVEY MONUMENT LOCATION RECORD

Recorders Data

CORNER: West 1/4 SECTION: 2 TOWNSHIP 39 NORTH RANGE 6 EAST/WEST

FOR M.C. CORNER INDICATE: NAME OF WATERWAY N/A SECTION LINE N/A

(CITY)(VILLAGE)(TOWN) OF: Woodruff COUNTY OF: Oneida

Description of monument found or placed and all other evidence used as a basis for monument location; including all monuments and related measurements required if the corner location is reestablished by lost corner proportionate methods. Also indicate name of original surveyor, survey date, corner monument set and established bearing trees, witness or reference monuments with ties from available records.

Found and accepted a standard 2" dia. aluminum pipe monument with stamped Oneida County cap 6" below West edge of existing blacktop roadway pavement at this corner location.

In 1863, Anderson/GLO set a wood post as the original quarter corner and marked OBTs, a 9" Aspen N44°E 25 lks and a 10" Aspen S59½°W 20 lks, all of which are now obliterated within existing roadway area. The GLO post was set 3.42 chains South of the NW corner of Section 2 per original notes, which currently compares at nearly equal measure.

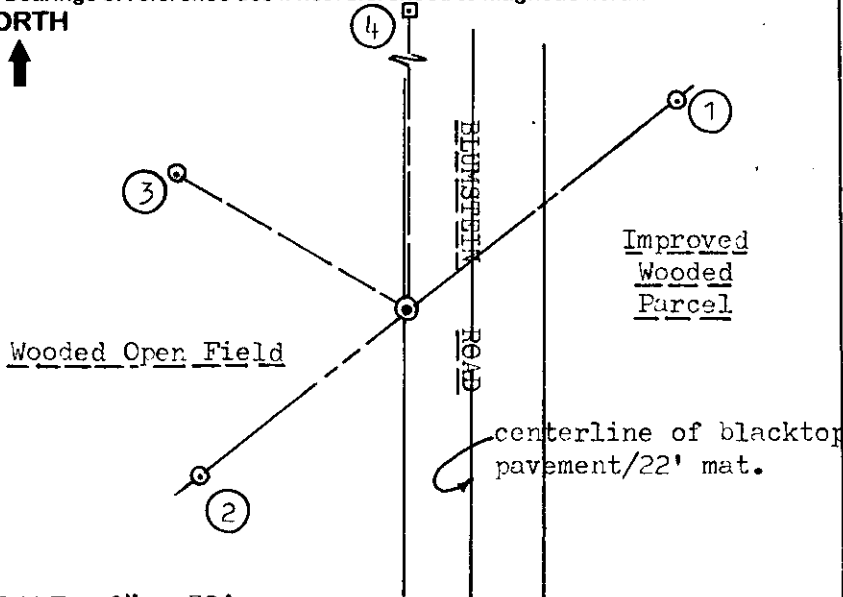
In 1977-78, Northwoods Surveyors reestablished this corner by proportion along the adjoining East line of Section 3, preparatory to their Virgin Pines Subdivision Plat survey per their section subdivision control worksheet now filed at Foltz & Associates, Inc.

In 1996, Rein/Wilderness Surveying, set and referenced a standard 2" dia. by 30" long alum. monument with stamped Oneida County cap at this corner location per their Certified Survey Map No. 1845 and Plat of Survey filed as B-3607, both in Oneida County records. Upon recent query at their office, they advised that this corner was established by resurvey in accord with the 1977-78 Northwoods Surveyors, now Foltz & Associates section subdivision control worksheet for adjoining Section 3; and they provided me with a copy of their field notes referencing the corner for my corner recovery and filing purposes.

This recovery completed August 13, 1998; there were no witnesses other than vehicular traffic.

Plan view map of monument location with bearing and distance ties to a minimum of four(4) described witness or reference monuments of concrete, natural stone, iron, live bearing trees or equivalent material. If applicable, also show a minimum of two(2) bearing and distance ties to any other monument found and not accepted; including the bearing and distance from the accepted monument. Indicate the basis for bearings of reference ties if not referenced to magnetic north.

NORTH



WITNESS MONUMENT TIES:

- ① 1" dia. iron pipe found with poly reference mark cap flush N52°E 53.58'.
- ② 1" dia. iron pipe found with poly reference mark cap flush S52°W 41.26'.
- ③ 1" dia. iron pipe found with poly reference mark cap flush N59°W 41.66'.
- ④ 3" x 4" stone monument found with center drill hole at top 3" below grade North 115.00'.

Note: Standard white poly 'T' marker post set 19.2' West of corner.

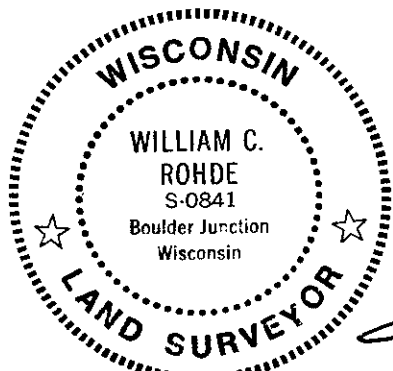
SCALE: 1" = 30'

Unless otherwise indicated, all bearing tree ties are to a .25" dia. by 2.5" long PK nail with a 1.25" dia. steel washer driven into unblazed right face and a .25" dia. by 2.5" long PK nail with a 2" dia. steel washer stamped 'BT' is also driven into unblazed face of bearing tree at DBH; the basis for measured bearings is magnetic to nearest degree and all tie distances are horizontal measure to nearest 1/100th feet.

LAND SURVEYOR CERTIFICATION:

I, William C. Rohde, hereby certify that I am a duly licensed Professional Land Surveyor in Wisconsin, that this USPLS monument location was determined by me or under my direction and control, and that this U.S. Public Land Survey Monument Location Record is true and correct to the best of my knowledge and belief.

William C. Rohde Date: 8-26-98
Signature



RLS SEAL

SHEET NO. 1 OF 1

This form is intended to fulfill requirements of Chapter A-E 7.08 (3)(a)(b)(c)(d)(e)(f)(g)(h)(i) U.S. Public Land Survey Monument Location Record, Wisconsin Administrative Code. Use reverse side for geodetic location data and/or continuation purposes.

	T39N		
	2		
	R6E		

INDEX NO.

SECTION LOCATION MAP

INDEX NO. C 17

3906032000

U.S. PUBLIC LAND SURVEY MONUMENT RECORD

REGISTER OF DEEDS OFFICE
ONEIDA COUNTY
FILED

APR 19 2021

KYLE J. FRANSON
REGISTER OF DEEDS

Note: This form is intended and designed to fulfill all requirements of the Wisconsin Administrative Code, Chapter A-E 7.08 U.S. Public Land Monument Record (3)(a)(b)(c)(d)(e)(f)(g)(h)(i). An additional sheet may be added if necessary to conform with said requirements.

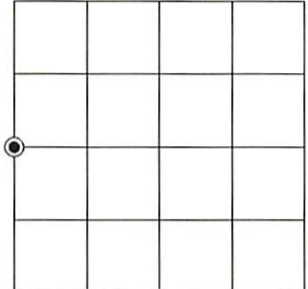
(a) CORNER LOCATION:

West Quarter Corner of Section 2
Township 39 North
Range 6 East
Town of Woodruff
County of Oneida

North:
East:
Datum:
GNSS Method:
GNSS Control:

(RECORDING AREA)

SECTION 2



(b) HISTORY OF ORIGINAL CORNER ESTABLISHMENT

Original Surveyor:
Date of Survey: Commenced
Completed
Original B.T.'S

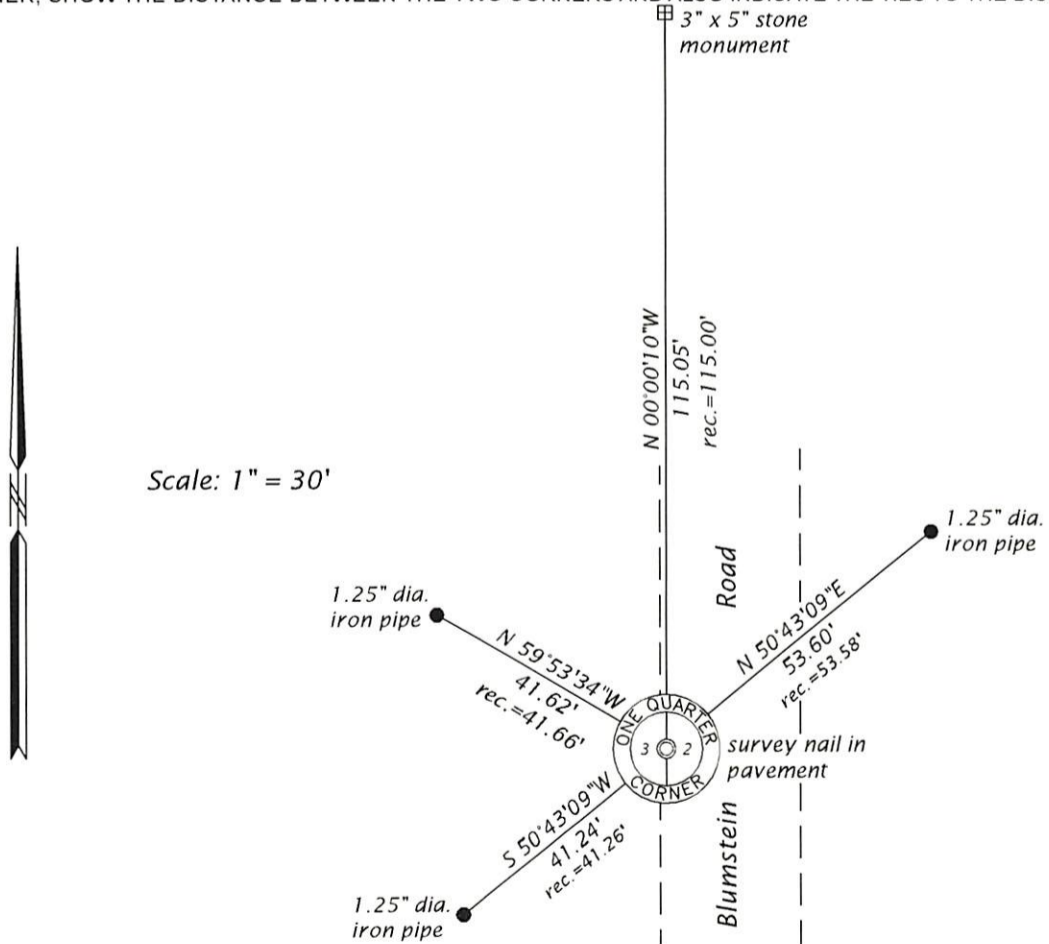
SEE PREVIOUS U.S.P.L.S. MONUMENT
RECORD DATED AUGUST 26, 1998.

(f)(g)(h) DESCRIPTION OF MONUMENT FOUND AT THIS CORNER AND IF IT WAS ACCEPTED, STATE ALL EVIDENCE (MATERIAL, TESTIMONIAL, OCCUPATIONAL, PLATS, RECORD, OTHER MONUMENTS) USED AS A BASIS FOR ESTABLISHING LOCATION. IF NOT ACCEPTED OR IF NOTHING WAS FOUND, STATE EVIDENCE USED AS BASIS FOR ESTABLISHING LOCATION. IF REESTABLISHED THROUGH LOST CORNER PROPORTIONATE METHODS, INDICATE ALL MONUMENTS, DISTANCES AND DIRECTIONS USED TO ESTABLISH. INDICATE TYPE OF MONUMENT AND SIGN POST FOUND OR SET.

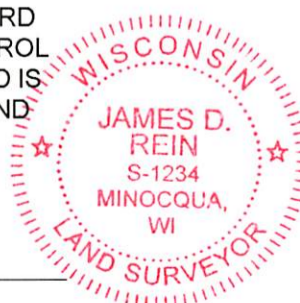
This is a perpetuation of a previous U.S.P.L.S. Monument Record by William C. Rohde, RLS, dated August 26, 1998, and filed in the office of the Oneida County Register of Deeds. A complete history of the corner can be found on the previous monument record. I accept the previous location as a true and faithful perpetuation or reestablishment of the original corner location and further perpetuate it as follows.

November 9, 2020, due to road construction, we did not recover the Oneida County capped aluminum monument shown on Rohde's monument record. We did recover the previous four witnesses. We set a survey nail in the pavement of Blumstein Road using the recovered witnesses. See below for updated witnesses.

(c)(d)(e) PLAN VIEW OF CORNER WITH TIES TO AT LEAST 4 WITNESS MONUMENTS. IF IN DISAGREEMENT WITH PREVIOUSLY ESTABLISHED CORNER, SHOW THE DISTANCE BETWEEN THE TWO CORNERS AND ALSO INDICATE THE TIES TO THE DISPUTED CORNER.



(i) I, JAMES D. REIN, PROFESSIONAL LAND SURVEYOR NO. S-1234 HEREBY CERTIFY THAT THE CORNER LOCATION ON THIS RECORD WAS DETERMINED BY ME OR UNDER MY DIRECTION AND CONTROL AND THAT THIS U.S. PUBLIC LAND SURVEY MONUMENT RECORD IS CORRECT AND COMPLETE TO THE BEST OF MY KNOWLEDGE AND BELIEF.



James D. Rein
SIGNATURE

4/14/21
DATE

INDEX NO. C - 17
3906032000